

Product datasheet for **RC214193**

SLC26A6 (NM_134263) Human Tagged ORF Clone

Product data:

Product Type:	Expression Plasmids
Product Name:	SLC26A6 (NM_134263) Human Tagged ORF Clone
Tag:	Myc-DDK
Symbol:	SLC26A6
Mammalian Cell Selection:	Neomycin
Vector:	pCMV6-Entry (PS100001)
E. coli Selection:	Kanamycin (25 ug/mL)



[View online »](#)

ORF Nucleotide
Sequence:

>RC214193 ORF sequence
Red=Cloning site Blue=ORF Green=Tags(s)

TTTTGTAATACGACTCACTATAGGGCGGCCGGAATTCGTCGACTGGATCCGGTACCGAGGAGATCTGCC
GCCGCGATCGCC

ATGGGGCTGGCGGATGCGTCGGGACCGAGGGACACACAGGCACTGCTGTCTGCAACACAAGCAATGGACC
TGGGAGGCGAGACTACCACATGGAACGGCCGCTGCTGAACCAGGAGCATTGGAGGAGCTGGGGCGCTG
GGGCTCAGCACCTAGGACCCACCACTGGCGGACCTGGTTGCAAGTCTCCCGTCTCGGGCCTATGCCCTT
CTGCTCCAACACCTCCCGGTTTTGGTCTGGTTACCCCGGTATCCTGTGCGTGACTGGCTCCTGGGTGACC
TGTTATCCGGCCTGAGTGTGGCCATCATGCAGCTTCCGAGGGCTTGGCCTACGCCCTCCTGGTGGATT
GCCCCCGTGTGGCCTCTATAGCTCCTTCTACCCTGTCTTCTACTTCTCTGTTTGGCACTTCCCGG
CACATCTCCGTGGGACCTTTGCTGTATGTCTGTGATGGTGGGAGTGTGACAGAATCCCTGGCCCCGC
AGGCCTTGAACGACTCCATGATCAATGAGACAGCCAGAGATGCTGCCCGGTACAGGTGGCCTCCACT
CAGTGTCTGGTGGCCTTCCAGGTGGGCTGGGCTGATCCACTTCGGCTTCGTGGTCACTACCTG
TCAGAACCTTTGTCGAGGCTATACCACAGCTGCAGCTGTGAGGTCTTCGTCACAGCTCAAGTATG
TGTTTGGCCTCCATCTGAGCAGCCACTCTGGGCCACTGTCCTCATCTATACAGTCTGGAGGTCTGCTG
GAAGCTGCCCCAGAGCAAGGTTGGCACCCTGGTCACTGCAGCTGTGGTGGGGTGGTCTCGTGGTGGT
AAGCTGTTGAATGACAAGCTGCAGCAGCAGCTGCCATGCCGATACCCGGGGAGCTGCTCACGCTCATCG
GGGCCACAGGCATCTCCTATGGCATGGGTCTAAAGCACAGATTTGAGGTAGATGTCGTGGCAACATCCC
TGCAGGGCTGGTCCCCCAGTGGCCCCAACCCAGCTGTTCTCAAAGCTCGTGGGCAGCGCCTTACC
ATCGTGTGGTGGTGGCATTGCCATCTACTGGGGAAGATCTTCGCCCTGAGGCACGGCTACCCGG
TGGACAGCAACCAGGAGCTGGTGGCCTGGGCTCAGTAACCTTATCGGAGGCATCTTCCAGTGTCTCCC
CGTGAGTTGCTCTATGTCTCGGAGCCTGGTACAGGAGAGCACCGGGGCAACTCGCAGGTTGCTGGAGCC
ATCTCTCCCTTTTATCCTCCTCATCATTGTCAAACCTGGGAACTCTTCCATGACCTGCCAAGGCGG
TCCTGGCAGCCATCATCATTGTGAACCTGAAGGCATGCTGAGGCAGCTCAGCGACATGCCTCCCTCTG
GAAGGCCAATCGGGCGGATCTGCTTATCTGGTGGTACCTTACGGCCACCATCTTGTGAACCTGGAC
CTTGGCTTGGTGGTGGGTCATCTTCCCTGCTGCTCGTGGTGGTCCGGACACAGATGCCCCACTACT
CTGTCTGGGGCAGGTGCCAGACACGGATATTTACAGAGATGTGGCAGAGTACTCAGAGGCCAAGGAAGT
CCGGGGGGTGAAGTCTCCGCTCCTCGGCCACCGTGTACTTTGCCAATGCTGAGTTCTACAGTGTGCG
CTGAAGCAGAGGTGTGGTGTGGATGTCGACTTCTCATCTCCAGAAGAAGAACTGCTCAAGAAGCAGG
AGCAGCTGAAGCTGAAGCAACTGCAGAAAGAGGAGAAGCTTCGGAACAGGCTGCCTCCCCAAGGGCGC
CTCAGTTTCCATTAATGTCAACACCAGCCTTGAAGACATGAGGAGCAACAACGTTGAGGACTGCAAGATG
ATGGTGAAGCTCAGGAGATAAGATGGAAGATGCAACAGCCAATGGTCAAGAAGACTCCAAGGCCCCAGATG
GGTCCACTGAAGGCCCTGGGCTGCCTCAGCCAGACTTCCACAGCCTCATCTGGACCTGGGTGCCCT
CTCCTTTGTGGACTGTGTGCCTCAAGAGCCTGAAGAATATTTCCATGACTTCCGGGAGATTGAGGTG
GAGGTGTACATGGCGCCTGCCACAGCCCTGTGGTCAGCCAGCTTGAAGCTGGGCACTTCTTCGATGCAT
CCATCACCAAGAAGCATCTTTGCCTCTGTCCATGATGCTGTACCTTTGCCCTCAACACCCGAGGCC
TGTCGCCGACAGCCCTGTTTCGGTCACCAGACTC

ACGCGTACGCGGCCGCTCGAGCAGAACTCATCTCAGAAGAGGATCTGGCAGCAAATGATATCCTGGATT
ACAAGGATGACGACGATAAGGTTTAA

Protein Sequence: >RC214193 protein sequence
 Red=Cloning site Green=Tags(s)

MGLADASGPRDQTQALLSATQAMDLRRRDYHMERPLLNQEHLEELGRWGSAPRTHQWRTWLQCSRARAYAL
 LLQHLPLVWLPRYPVRDWLLGDLLSGLSVAIMQLPQGLAYALLAGLPPVFGLYSSFYYPVFYFLFGTSR
 HISVGFAMVSMVGVSVTESLAPQALNDSMINETARDAARVQVASTLSVLVGLFQVGLGLIHFGFVVTYL
 SEPLVRGYTTAAAVQVFVSQKYYVFGHLSSHSGPLSLIYTVLEVCKWLPQSKVGTVVTAAVAGVVLVVV
 KLLNDKLLQQLPMPPIPGELLTLIGATGISYGMGLKHFVVDVVGNIAPGLVPPVAPNTQLFSKLVGSAFT
 IAVVGFIAIASLGIKIFALRHGYRVDSNQELVALGLSNLIGGIFQCFPVSCSRSRLVQESTGGNSQVAGA
 ISSLFILLIIVKLGEFHDLPKAVLAAIIIVNLKGLRQLSDMRSLWKANRADLLIWLVTFTATILLNLD
 LGLVVAVIFSLLLVVVRTQMPHYSVLGQVPDIDIYRDVAEYSEAKEVRGVKVFRRSATVYFANAEFYSDA
 LKQRCQVDVDFLISQKKLLKKQEQLKQLQKEEKLKQAAAPKGASVSVINVTSLQEDMRSNVEDCKM
 MVSSGDKMEDATANGQEDSKAPDGSTLKALGLPQPDFHSLILDGALSFVDTVCLKSLKNIFHDFREIEV
 EYMAACHSPVVSQLEAGHFFDASITKKHLFASVHDAVTFALQHPRPVDPSPVSVTRL

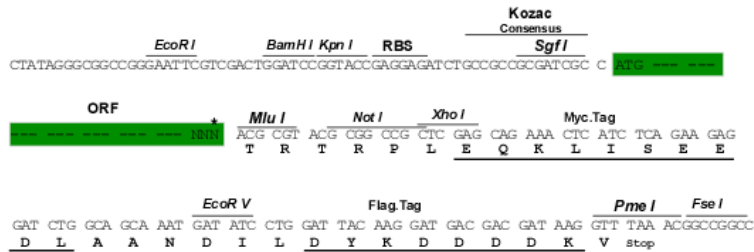
TRTRPLEQKLISEEDLAANDILDYKDDDDKV

Chromatograms: https://cdn.origene.com/chromatograms/mk6049_a12.zip

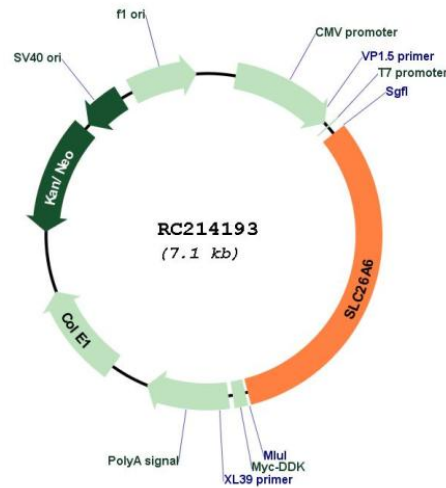
Restriction Sites: SgfI-MluI

Cloning Scheme:

Cloning sites used for ORF Shuttling:



* The last codon before the Stop codon of the ORF

Plasmid Map:


ACCN: NM_134263

ORF Size: 2274 bp

OTI Disclaimer: The molecular sequence of this clone aligns with the gene accession number as a point of reference only. However, individual transcript sequences of the same gene can differ through naturally occurring variations (e.g. polymorphisms), each with its own valid existence. This clone is substantially in agreement with the reference, but a complete review of all prevailing variants is recommended prior to use. [More info](#)

OTI Annotation: This clone was engineered to express the complete ORF with an expression tag. Expression varies depending on the nature of the gene.

Components: The ORF clone is ion-exchange column purified and shipped in a 2D barcoded Matrix tube containing 10ug of transfection-ready, dried plasmid DNA (reconstitute with 100 ul of water).

Reconstitution Method:

1. Centrifuge at 5,000xg for 5min.
2. Carefully open the tube and add 100ul of sterile water to dissolve the DNA.
3. Close the tube and incubate for 10 minutes at room temperature.
4. Briefly vortex the tube and then do a quick spin (less than 5000xg) to concentrate the liquid at the bottom.
5. Store the suspended plasmid at -20°C. The DNA is stable for at least one year from date of shipping when stored at -20°C.

RefSeq: [NM_134263.3](#)

RefSeq Size: 2659 bp

RefSeq ORF: 2277 bp

Locus ID: 65010

UniProt ID: [Q9BXS9](#)

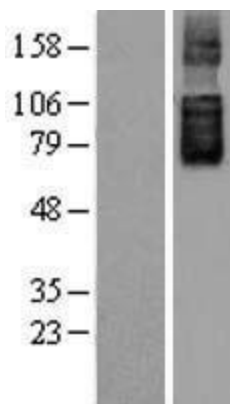
Cytogenetics: 3p21.31

Protein Families: Transmembrane

MW: 82.8 kDa

Gene Summary: This gene belongs to the solute carrier 26 family, whose members encode anion transporter proteins. This particular family member encodes a protein involved in transporting chloride, oxalate, sulfate and bicarbonate. Alternatively spliced transcript variants encoding distinct isoforms have been described. [provided by RefSeq, Aug 2013]

Product images:



Western blot validation of overexpression lysate (Cat# [LY403342]) using anti-DDK antibody (Cat# [TA50011-100]). Left: Cell lysates from untransfected HEK293T cells; Right: Cell lysates from HEK293T cells transfected with RC214193 using transfection reagent MegaTran 2.0 (Cat# [TT210002]).