

## Product datasheet for RC214192

### GPM6B (NM\_001001995) Human Tagged ORF Clone

#### Product data:

Product Type:	Expression Plasmids
Product Name:	GPM6B (NM_001001995) Human Tagged ORF Clone
Tag:	Myc-DDK
Symbol:	GPM6B
Synonyms:	M6B
Mammalian Cell Selection:	Neomycin
Vector:	pCMV6-Entry (PS100001)
E. coli Selection:	Kanamycin (25 ug/mL)
ORF Nucleotide Sequence:	>RC214192 representing NM_001001995 Red=Cloning site Blue=ORF Green=Tags(s)

TTTTGTAATACGACTCACTATAGGGCGGCCGGAATTCGTCGACTGGATCCGGTACCGAGGAGATCTGCC  
GCC**CGATCGCC**

ATGAAGCCAGCCATGGAACTGCAGCCGAGGAAAATACTGAACAAAGCCAAGAGAGAAAAGTGAACAGCA  
GAGCTGAAATGGAAATTGGCAGGTACCACTGGATGTACCCAGGCTCAAAGAACCACAGTACCATCCCGT  
GCCAACCTGGGGACAGGGCTAGCCCCTTGAGCAGTCCAGGCTGCTTTGAATGCTGCATCAAGTGTCTG  
GGAGGAGTCCCCTACGCCTCCCTGGTGGCCACCATCCTCTGCTTCTCCGGGTGGCCTTATTCTGCGGT  
GTGGGCATGTGGCTCTCGCAGGCACCGTGGCGATTCTTGAGCAACTTCTCCACCAACGCCAGTGACCA  
TGCTTGTCTGAGCGAGGTGATACAACTGATGCAGTATGTCATCTATGGAATTGCGTCTTTTTCTTCTTG  
TATGGGATCATTCTGTTGGCAGAAGGCTTTTACACCACAAGTGCAGTGAAGAAGTGCACGGTGAGTTTA  
AAACAACCGCTTGTGGCCGATGCATCAGTGAATGTTTCGTTTTCTCACCTATGTGCTTGGAGTGGCCTG  
GCTGGGTGTGTTGGTTTCTCAGCGGTGCCCGTGTGTTATGTTCTACAACATATGGTCAACTTGTGAAGTC  
ATCAAGTACCAGCAGACCAACGGGACCAGGGTGTGGAGCAGATCTGTGTGGATATCCGACAATACGGTA  
TCATTCTTGAATGCTTCCCCGGAAAAATATGTGGCTCTGCCCTGGAGAACATCTGCAACACAAAACGA  
GTTCTACATGTCTATCACCTGTTCAATTGTGGCTGTGCAGGAGCTGGTCCACCGTCATTGCCCTGATC  
CACTTCTCATGATACTGCTTCTAACTGGGCTTACTTAAAGGATGCGAGCAAAATGCAGGCTTACCAGG  
ATATCAAAGCAAAGGAAGAACAGGAAGTCAAGATATCCAGTCTCGGTCAAAGAACAACCAATTCTTA  
CACA

**ACGCGT**ACGCGGCCGCTCGAGCAGAACTCATCTCAGAAGAGGATCTGGCAGCAATGATATCCTGGATT  
ACAAGGATGACGACGATAAGGTTTAA



[View online »](#)

**Protein Sequence:** >RC214192 representing NM\_001001995  
Red=Cloning site Green=Tags(s)

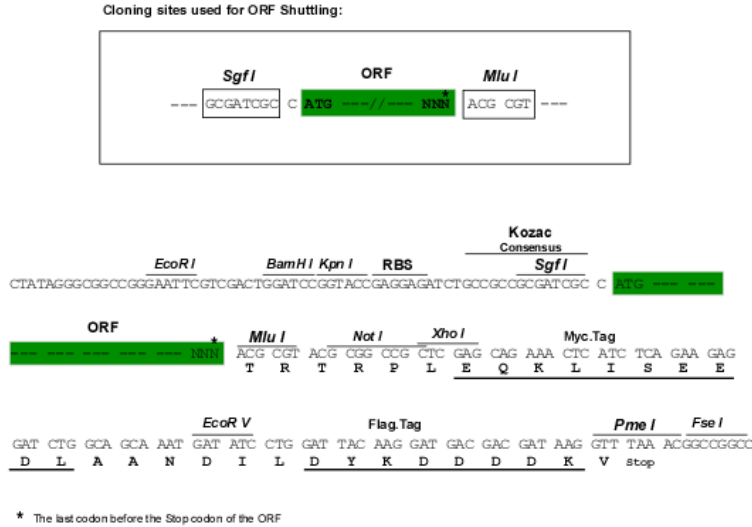
MKPAMETAAEENTEQSQRKVNRAEMEIGRYHWMYPGSKNHQYHPVPTLGDRASPLSSPGCFECCIKCL  
 GGVPYASLVATILCFSGVALFCGCGHVALAGTVAILQHFSTNASDHALLSEVIQLMQYVIYGIASF  
 YGIIILLAEFGYTTSAVKELHGEFKTTACGRCISGMFVFLTYVLGVAWLGVFGFSAVPVFMFYNIWSTCEV  
 IKSPQTNGTTGVEQICVDIRQYGIIPWNAFFPGKICGSALENICNTNEFYMSYHLFIVACAGAGATVIALI  
 HFLMILSSNWAYLKDASKMQAYQDIKAKEEQELQDIQSRSEQLNSYT

TRTRPLEQKLISEEDLAANDILDYKDDDDKV

**Chromatograms:** [https://cdn.origene.com/chromatograms/mk8052\\_e04.zip](https://cdn.origene.com/chromatograms/mk8052_e04.zip)

**Restriction Sites:** SgfI-MluI

**Cloning Scheme:**



**ACCN:** NM\_001001995

**ORF Size:** 984 bp

**OTI Disclaimer:** The molecular sequence of this clone aligns with the gene accession number as a point of reference only. However, individual transcript sequences of the same gene can differ through naturally occurring variations (e.g. polymorphisms), each with its own valid existence. This clone is substantially in agreement with the reference, but a complete review of all prevailing variants is recommended prior to use. [More info](#)

**OTI Annotation:** This clone was engineered to express the complete ORF with an expression tag. Expression varies depending on the nature of the gene.

**Components:** The ORF clone is ion-exchange column purified and shipped in a 2D barcoded Matrix tube containing 10ug of transfection-ready, dried plasmid DNA (reconstitute with 100 ul of water).

**Reconstitution Method:**

1. Centrifuge at 5,000xg for 5min.
2. Carefully open the tube and add 100ul of sterile water to dissolve the DNA.
3. Close the tube and incubate for 10 minutes at room temperature.
4. Briefly vortex the tube and then do a quick spin (less than 5000xg) to concentrate the liquid at the bottom.
5. Store the suspended plasmid at -20°C. The DNA is stable for at least one year from date of shipping when stored at -20°C.

**RefSeq:** [NM\\_001001995.3](#)

**RefSeq Size:** 3219 bp

**RefSeq ORF:** 987 bp

**Locus ID:** 2824

**UniProt ID:** [Q13491](#)

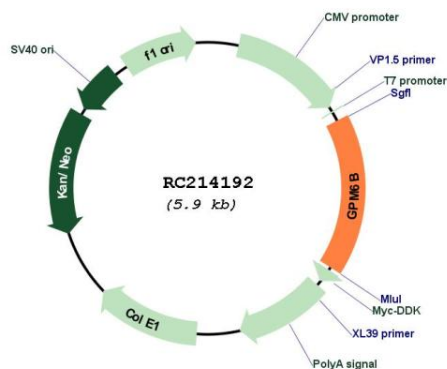
**Cytogenetics:** Xp22.2

**Protein Families:** Transmembrane

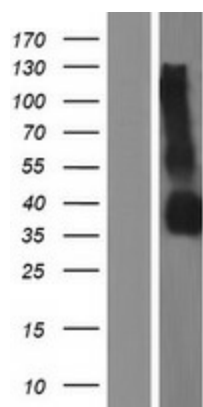
**MW:** 36 kDa

**Gene Summary:** This gene encodes a membrane glycoprotein that belongs to the proteolipid protein family. Proteolipid protein family members are expressed in most brain regions and are thought to be involved in cellular housekeeping functions such as membrane trafficking and cell-to-cell communication. This protein may also be involved in osteoblast differentiation. Alternate splicing results in multiple transcript variants. Pseudogenes of this gene are located on chromosomes Y and 22. [provided by RefSeq, Jan 2016]

### Product images:



Circular map for RC214192



Western blot validation of overexpression lysate (Cat# [LY424310]) using anti-DDK antibody (Cat# [TA50011-100]). Left: Cell lysates from untransfected HEK293T cells; Right: Cell lysates from HEK293T cells transfected with RC214192 using transfection reagent MegaTran 2.0 (Cat# [TT210002]).