

Product datasheet for RC214191

CCRK (CDK20) (NM_178432) Human Tagged ORF Clone

Product data:

Product Type:	Expression Plasmids
Product Name:	CCRK (CDK20) (NM_178432) Human Tagged ORF Clone
Tag:	Myc-DDK
Symbol:	CDK20
Synonyms:	CCRK; CDCH; P42; PNQALRE
Mammalian Cell Selection:	Neomycin
Vector:	pCMV6-Entry (PS100001)
E. coli Selection:	Kanamycin (25 ug/mL)
ORF Nucleotide Sequence:	>RC214191 representing NM_178432 Red=Cloning site Blue=ORF Green=Tags(s)

TTTTGTAATACGACTCACTATAGGGCGGCCGGAATTCGTCGACTGGATCCGGTACCGAGGAGATCTGCC
GCC**CGATCGCC**

ATGGACCACTACTGCATCCTGGGCCGCATCGGGGAGGGCGCCACGGCATCGTCTTCAAGGCCAAGCAGC
TGGAGCCGAGGGTGGGCTGGCAGTGTCTGCCTTCTATCCTGCAGACTGGCGAGATAGTTGCCCTCAAGAA
GGTGGCCCTAAGGCGGTGGAGGACGGCTTCCCTAACCAGGCCCTGCGGGAGATTAAGGCTCTGCAGGAG
ATGGAGGACAATCAGTATGTGGTACAACGAAGGCTGTGTTCCACACGGTGGAGGCTTTGTGCTGGCCT
TTGAGTTCATGCTGTCGGATCTGGCCGAGGTGGTGCCTATGCCAGAGGCCACTAGCCAGGCACAGGT
CAAGAGCTACCTGCAGATGCTGCTCAAGGGTGTGCCTTCTGCCATGCCAACAACATTGTACATCGGGAC
CTGAAACCTGCCAACCTGCTCATCAGCGCCTCAGGCCAGCTCAAGATAGCGGACTTTGGCCTGGCTCGAG
TCTTTTCCCAGACGGCAGCCGCCTCTACACACACCAGGTGGCCACCAGGTCTGTGGGCTGCATCATGGG
GGAGCTGTTGAATGGGTCCCCCTTTTCCCGGCAAGAACGATATTGAACAGCTTTGCTATGTGCTTCGC
ATCTTGGGCACCCCAACCCTCAAGTCTGGCCGGAGCTCACTGAGCTGCCGACTACAACAAGATCTCCT
TTAAGGAGCAGGTGCCATGCCCTGGAGGAGGTGCTGCCTGACGTCTCTCCCAGGCATTGGATCTGCT
GGGTCAATTCTTCTACCTCCTCACCAGCGCATCGCAGCTTCCAAGGCTCTCCTCCATCAGTACTTC
TTCACAGCTCCCCTGCCATGCCATCCATCTGAGCTGCCGATTCTCAGCGTCTAGGGGGACCTGCCCCCA
AGGCCCATCCAGGGCCCCCACATCCATGACTTCCACGTGGACCGCCCTTTGAGGAGTGCCTGTTGAA
CCCAGAGCTGATTCGGCCCTTCATCCTGGAGGGG

ACGCGTACGCGGCCGCTCGAGCAGAACTCATCTCAGAAGAGGATCTGGCAGCAAATGATATCCTGGATT
ACAAGGATGACGACGATAAGGTTTAA



View online »

Protein Sequence: >RC214191 representing NM_178432
 Red=Cloning site Green=Tags(s)

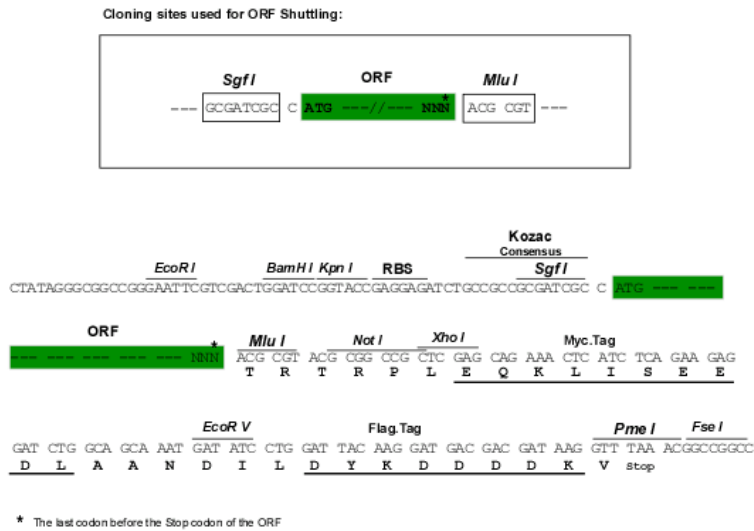
MDQYCILGRIGEGAHGIVFKAKHVEPRVGWQCLPSILQTGEIVALKKVALRRLEDGFPNQUALREIKALQE
 MEDNQYVVQLKAVFPHGGGFVLAFFEMLSDLAEVVRHAQRPLAQAQVKSYLQMLLKGVAFCHANNIVHRD
 LKPANLLISASGQLKIADFGLARVFSPDGSRLYTHQVATRSVGCIMGELLNGSPLFPKGNDIEQLCYVLR
 ILGTPNPQVWPEL TELPDYNKISFKEQVPMPL EEVLPDVSPQALDLLGQFLLYPPHQRIAASKALLHQYF
 FTAPLPAHPSELPIPQRLGGPAPKAHPGPPHIHDFHVDRLPEESLLNPELIRPF ILEG

TRTRPLEQKLISEEDLAANDILDYKDDDDKV

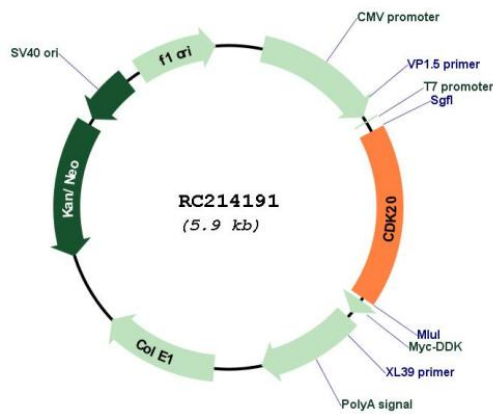
Chromatograms: https://cdn.origene.com/chromatograms/mg4139_c01.zip

Restriction Sites: SgfI-MluI

Cloning Scheme:



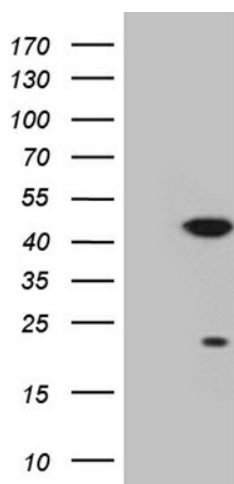
Plasmid Map:



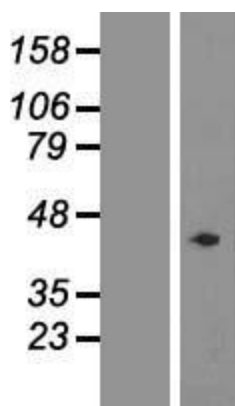
ACCN: NM_178432

ORF Size:	1014 bp
OTI Disclaimer:	The molecular sequence of this clone aligns with the gene accession number as a point of reference only. However, individual transcript sequences of the same gene can differ through naturally occurring variations (e.g. polymorphisms), each with its own valid existence. This clone is substantially in agreement with the reference, but a complete review of all prevailing variants is recommended prior to use. More info
OTI Annotation:	This clone was engineered to express the complete ORF with an expression tag. Expression varies depending on the nature of the gene.
Components:	The ORF clone is ion-exchange column purified and shipped in a 2D barcoded Matrix tube containing 10ug of transfection-ready, dried plasmid DNA (reconstitute with 100 ul of water).
Reconstitution Method:	<ol style="list-style-type: none">1. Centrifuge at 5,000xg for 5min.2. Carefully open the tube and add 100ul of sterile water to dissolve the DNA.3. Close the tube and incubate for 10 minutes at room temperature.4. Briefly vortex the tube and then do a quick spin (less than 5000xg) to concentrate the liquid at the bottom.5. Store the suspended plasmid at -20°C. The DNA is stable for at least one year from date of shipping when stored at -20°C.
RefSeq:	NM_178432.3 , NP_848519.1
RefSeq Size:	2344 bp
RefSeq ORF:	1017 bp
Locus ID:	23552
UniProt ID:	Q8IZL9
Cytogenetics:	9q22.1
Protein Families:	Druggable Genome, Protein Kinase
MW:	37.4 kDa
Gene Summary:	The protein encoded by this gene contains a kinase domain most closely related to the cyclin-dependent protein kinases. The encoded kinase may activate cyclin-dependent kinase 2 and is involved in cell growth. Alternatively spliced transcript variants encoding distinct isoforms have been reported. [provided by RefSeq, Dec 2009]

Product images:



HEK293T cells were transfected with the pCMV6-ENTRY control (Cat# [PS100001], Left lane) or pCMV6-ENTRY CDK20 (Cat# RC214191, Right lane) cDNA for 48 hrs and lysed. Equivalent amounts of cell lysates (5 ug per lane) were separated by SDS-PAGE and immunoblotted with anti-CDK20 (Cat# [TA809548])(1:2000). Positive lysates [LY405956] (100ug) and [LC405956] (20ug) can be purchased separately from OriGene.



Western blot validation of overexpression lysate (Cat# [LY405956]) using anti-DDK antibody (Cat# [TA50011-100]). Left: Cell lysates from untransfected HEK293T cells; Right: Cell lysates from HEK293T cells transfected with RC214191 using transfection reagent MegaTran 2.0 (Cat# [TT210002]).