

Product datasheet for RC214190

USP19 (NM_006677) Human Tagged ORF Clone

Product data:

Product Type:	Expression Plasmids
Product Name:	USP19 (NM_006677) Human Tagged ORF Clone
Tag:	Myc-DDK
Symbol:	USP19
Synonyms:	ZMYND9
Mammalian Cell Selection:	Neomycin
Vector:	pCMV6-Entry (PS100001)
E. coli Selection:	Kanamycin (25 ug/mL)
ORF Nucleotide Sequence:	>RC214190 representing NM_006677 Red=Cloning site Blue=ORF Green=Tags(s)

TTTTGTAATACGACTCACTATAGGGCGGCCGGAATTCGTCGACTGGATCCGGTACCGAGGAGATCTGCC
GCC**CGATCGCC**

ATGTCTGGCGGGCCAGTGCCACAGGCCAAGGAGAGGGCCCCAGGACTGGAGGACACCACTAGTAAGA
AGAAGCAGAAGGATCGAGCAAACCAGGAGAGCAAGGATGGAGATCCTAGGAAAGAGACAGGGTCTCGATA
TGTTGCCAGGCTGGTCTTGAACCTCTGGCCTCAGGTGATCCTTCTGCCTCAGCCTCCCATGCAGCTGGG
ATCACAGGCTCAGCCACCGTACCCGGCTGTTCTTTCCTTCATCGTCAGGGTCAAGATCCACTCCTCAAG
AGGAGCAGACAAAGAGGGAGCTTGTGAAGACCCTCATGATCTCTTGGCTACTCCACTCCAGAGTTGTT
GCTCGATTGGAGGCAGAGTGCAGAAGAGGTGATTGTCAAGCTTCGTGTGGGAGTAGTCCCTGCAGCTG
GAGGATGTAGATGCTGCTTTCACAGATACAGACTGTGTGGTGCGGTTTGCAGGTGGTGCAGAGTGGGGT
GTGTTCTTATGCTGAGATAAAAAGCTCTTGTGCTAAAGTGCAAACCCGCAAGGGCAGTCTCCTGCACCT
GACACTGCCCAAAAAGGTGCCTATGCTCACGTGGCCCTCCTCCTGGTTGAGGCTGATGAACAGCTTTGC
ATACCACCGCTGAACTCCCAAACCTGCCTCCTGGGCTCAGAGGAGAAATTTAGCCCTTTGGCAGGAGAGA
AAGCAGTGCTCCCGGAATGACCCAGTCTCTCCAGCCATGGTCCGGAGCAGAAACCTGGGAAAGATGA
CTGTGCCAAGGAGGAGATGGCAGTGGCAGCAGATGCTGCAACCTTGGTGGATGAGCCGAGTCGATGGTG
AACCTGGCGTTTGTCAAGAATGACTCGTATGAGAAGGGCCGGATTCAAGTGGTGGTGCAGTGTACGTGA
AGGAGATCTGCAGGGACACCTCAAGAGTACTTTTCCGTGAGCAGGACTTACGCTCATCTTCCAGACCAG
GGATGAAACTTCTGAGGCTGCACCCGGGCTGTGGGCCACACACCTTCCGTTGGCAGGTGAAGCTC
AGGAATCTGATTGAGCCAGAGCAGTGCACCTTCTGTTTACGGCTTCTCGCATCGACATCTGCCTTCGTA
AGAGGCAGAGTCAAGCTGGGGGGCCTGGAGGCCCGGCTGCACGAGTGGTGGTGAAAGGTTGCCGT
GCCGACAGGTCCAACCCCTCTGGATTCAACCCACAGGAGGTGCTCCCCACCCCTGACAGGCCAGGAG
GAGGCCGGGCTGTGGAGAAGGATAAATCCAAGGCAGATCTGAGGACACAGGGCTAGACAGTGTGGCAA
CCCGCACACCCATGGAGCATGTAACCCAAAGCCAGAGACACACCTGGCCTCGCCAAGCCTACATGCAT
GGTGCCTCCCATGCCACAGCCAGTTAGTGGAGACAGCGTGGAGGAGGAGGAAGAGGAAGAAGAAG



[View online >](#)

GTGTGTCTGCCAGGCTTCACTGGCCTTGTCATTTAGGCAACACCTGCTTCATGAACAGCGTCATTCAGT
CTCTGTCCAACACTCGGGAACCTCCGGGACTTCTCCATGACCGCTCCTTTGAGGCTGAGATCAACTACAA
CAACCCACTAGGGACTGGTGGCGTCTGGCCATTGGCTTTGCCGTGCTGCTTCGGGCGCTGTGGAAGGGC
ACCCACCATGCCTTCCAGCCTTCCAAGTTGAAGGCCATTGTGGCGAGTAAGGCCAGCCAGTTCACAGGCT
ATGCACAGCATGATGCCAGGAGTTCATGGCTTTCCTGCTGGATGGGCTGCACGAGGACCTGAATCGCAT
TCAGAACAAGCCCTACACAGAGACCGTGGATTTCAGATGGGCGGCCGATGAGGTGGTAGCTGAGGAAGCA
TGGCAGCGGCACAAGATGAGGAATGACTTTTCATCGTGGACCTATTTTCAGGGGCAGTACAAGTCGAAGC
TGGTGTGCCCTGTGTGCAAGGTCTCCATCACTTTTGACCCGTTTCTTTATCTGCCGGTGCCCTTGCC
ACAAAAGCAAAAGGTTCTCCCTGTCTTTATTTTGCCCGAGAGCCCCACAGCAAGCCCATCAAGTTCCTG
GTGAGCGTCAGCAAGGAGAACTCCACTGCGAGCGAAGTATTGGACTCCCTCTCTCAGAGTGTTCATGTGA
AGCCTGAGAACCTGCGTTTGGCGGAGGTAATTAAGAATCGTTTTTCATCGTGTGTTCTACCTCCCCTC
ACTGGACACTGTGTCCTCATCTGATACGCTCCTGCTTTGAGCTGCTATCCTCAGAGTTGGTAAGGAG
CGGGTAGTGGTGTAGAGGTGCAACAGCGCCCCAGGTGCCAGCGTCCCCTCTCCAAGTGTGCAGCCT
GCCAGCGAAGCAACAGTCGGAGGATGAAAAGCTGAAGCGCTGTACCCGGTGTACCGTGTGGGCTACTG
CAACCAGCTCTGCCAGAAAACCCACTGGCCTGACCACAAGGGCCTCTGCCGACCTGAGAACATTGGCTAC
CCCTTCTGGTCACTGTACCTGCCTCACGCCTCACTTATGCCCGCTCGCTCAGTTGCTAGAGGGCTATG
CCCGTACTCTGTGAGTGTATCCAGCCACCCTTTCAGCCAGGCCGATGGCCTTGGAGTCTCAGAGCCC
TGGCTGCACCACACTGCTCTCCACAGGTTCCCTGGAGGCTGGGGACAGCGAGAGAGACCCCATTCAGCCA
CCTGAGCTCCAGCTGGTACCCCTATGGCTGAGGGGGACACAGGGCTTCCCCGGGTGTGGGCAGCCCTG
ACCGGGTCTCTGTGCCAGCACCAGTGGAAATTTCTTCTGAGATGCTGGCCAGTGGGCCATTGAGGTTGG
CTCCTTGCCAGCTGGCGAGAGGGTGTCCCGACCGAAGCTGCTGTGCCTGGTACCAGCATCCAAGTGAA
GCTATGAATGCCACACACCCAGTTCATCTATAAAATTGATTATCCAACCGAGAGCAGCGGCTAG
AGGACAAAAGGAGACACCCCACTGGAGCTGGGTGACGACTGTAGCCTGGCTCTGCTGCGGGAACAATGA
GCGCTTGCAGGAGTTTGTGTTGGTAGCCTCCAAGGAGCTGGAATGTGCTGAGGATCCAGGCTCTGCCGGT
GAGGCTGCCCGGGCCGGCCACTTACCCTGGACAGTGCCTCAACCTTTCACACGGCCTGAGGTGCTGG
CACCCGAGGAGGCTGTAAGTACTGCCACAGTCAAACAGCACCCTGAGGCTCCAAGCAGCTGTTGCTATG
GCGCCTGCCAAATGTTCTCATCGTGCAGCTCAAGCGCTTCTCCTTTCGTAGTTTTATCTGGCGTGACAAG
ATCAATGACTTGGTGGAGTTCCTGTTAGGAACCTGGACCTGAGCAAGTCTGCATTGGTCAGAAAGAGG
AGCAGCTGCCAGCTACGATCTATATGCTGTATCAACCACTATGGAGGCATGATTGGTGGCCACTACAC
TGCTGTGCACGCTGCCAATGATCGTAGCAGTCAGCGCAGTACGCTGGGCTGGCGCTTGTGTTGATGAC
AGCACAGTGACAACGGTAGACGAGAGCCAGGTTGTGACGCTTATGCCTATGTACTTTCTACCGCCGGC
GGAACCTCTCTGTGGAGAGGCCCCCAGGGCAGGTCACCTGAGCACCACCAGCCTAGGCCCTGCAGC
TGAGGCTGCTGCCAGCCAGGCTTCCCGATTTGGCAGGAGCTGGAGGCTGAGGAGGAGCCGGTGCCTGAG
GGGTCTGGGCCCCCTGGTCCCTGGGGGCCCAAGACTGGGTGGGCCCCCTACCAGTGGCCCTACCACAC
CAGATGAGGGCTGCCTCCGGTACTTTGTCTGGGCACCCTGGCGGCTTGGTGGCCCTGTGCTCAACGT
GTTCTATCCTCTGGTATCCCAGAGTCGCTGGAGA

AGCGGACCGACGCGTACGCGCCGCTCGAGCAGAAAACCTCATCTCAGAAGAGGATCTGGCAGCAAATGATATCC
TGGATTACAAGGATGACGACGATAAGGTTTAA

Protein Sequence: >RC214190 representing NM_006677
 Red=Cloning site Green=Tags(s)

```

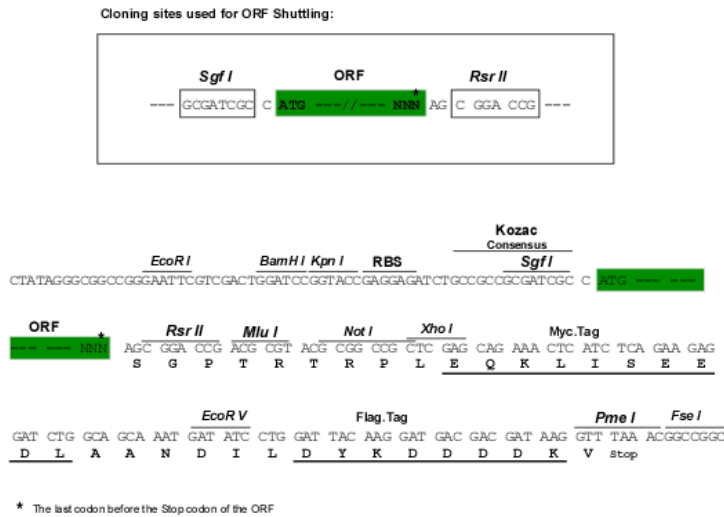
MSGGASATGPRRGPPLGLEDTTSKKKQKDRANQESKDGDPKETSRYVAQAGLEPLASGDPSASASHAAG
ITGSRHRTRLFFPSSSGSASTPQEEQTEGACEDPHDLLATPTPELLLDWRQSAEEVIVKLRVGVGVLQL
EDVDAAFDTDCVVRFAGGQWGGVFYAEIKSSCAKVQTRKGSLLHLTLPKKVPMLTWPSLLVEADEQLC
IPPLNSQTCLLGEENLAPLAGEKAVPPGNDPVSAMVRSRNPNGKDDCAKEEMAVAADAATLVDEPESMV
NLAFVKNDSEYKGPDSVVVHVYVKEICRDTSRVLFREQDFTLIFQTRDGNFLRLHPGCGPHHTFRWQVKL
RNLIIEPEQCTFCFTASRIDICLRKRQSQRWGGLAPAARVGGAKVAVPTGPTPLDSTPPGGAPHPLTGQE
EARAVEKDKSKARSEDGLDSVATRTPMEHVTPKPEHLASPKPTCMVPPMPHSPVSGDSVEEEEEEEKK
VCLPGFTGLVNLGNTCFMNSVIQSLNTRERLDFHDSFEAEINYNPLGTGGRLAIGFVLLRALWKG
THHAFQPSKLLKAI VASKASQFTGYAQHDAQEFMAFLLDGLHEDLNRIQNKPYTETVSDGRPDEVVAEEA
WQRHKMRNDSFIVDLFQGGYKSKLVCPVCAKVSITFDPLVLPVPLPQKQKVLVVFYAREPHSKPIKFL
VSVSKENSTASEVLDLSQSVHVKPENLRLAEVIKRNFRHVFVLPVSHSLDTPSPDSTLLCFELLSSELAKE
RVVVLEVQQRQVPSVPI SKCAACQRKQSEDEKLKRCRCYRVGYCNQLCQKTHWPDHKLGRPENIGY
PFLVSVPASRLTYARLAQLLEGYARYSVSVFQPPFQPRMALESQSPGCTLLSTGSL EAGDSERDPIQP
PELQLVTPMAEGDTGLPRVWAAPDRGPVPTSGISSEMLASGPIEVGSLPAGERVSRPEAAVPGYQHPSE
AMNAHTPQFFIYKIDSSNREQRLEDKGDTPLELGDDCSLALVWRNNERLQEFVLVASKELECAEDPGSAG
EAARAGHFTLDQCLNLFTRPEVLAPEEAWYCPQCKQHREASKQLLLWRLPNVIVQLKRF SFRSFIWRDK
INDLVEFPVRNLDL SKFCIGQKEEQLP SYDL YAVINHYGGMIGGHYTACARLPNDRSSQSRSDVGRWLFDD
STVTTVDESQVTRYAYVLFYRRRNSPVERPPRAGHSEHHPDLGPAAEAAASQASRIWQLEAE EEPVPE
GSGPLGPWGPQDWVGPLPRGPTTPDEGCLRYFVLGTVAALVALVNLVVFYPLVVSQSRWR
  
```

SGPTRRRLEQKLI SEEDLAANDILDYKDDDDKV

Chromatograms: https://cdn.origene.com/chromatograms/mg4618_c01.zip

Restriction Sites: SgfI-RsrII

Cloning Scheme:

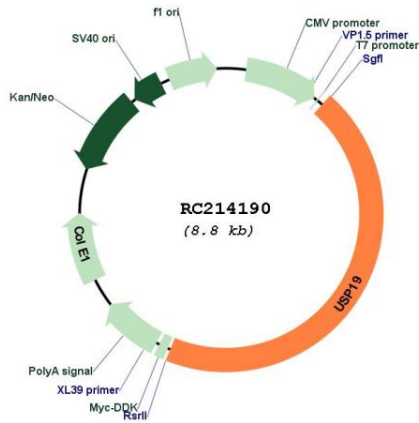


ACCN: NM_006677

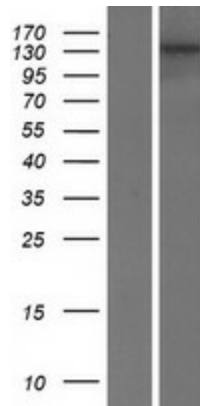
ORF Size: 3954 bp

OTI Disclaimer:	The molecular sequence of this clone aligns with the gene accession number as a point of reference only. However, individual transcript sequences of the same gene can differ through naturally occurring variations (e.g. polymorphisms), each with its own valid existence. This clone is substantially in agreement with the reference, but a complete review of all prevailing variants is recommended prior to use. More info
OTI Annotation:	This clone was engineered to express the complete ORF with an expression tag. Expression varies depending on the nature of the gene.
Components:	The ORF clone is ion-exchange column purified and shipped in a 2D barcoded Matrix tube containing 10ug of transfection-ready, dried plasmid DNA (reconstitute with 100 ul of water).
Reconstitution Method:	<ol style="list-style-type: none">1. Centrifuge at 5,000xg for 5min.2. Carefully open the tube and add 100ul of sterile water to dissolve the DNA.3. Close the tube and incubate for 10 minutes at room temperature.4. Briefly vortex the tube and then do a quick spin (less than 5000xg) to concentrate the liquid at the bottom.5. Store the suspended plasmid at -20°C. The DNA is stable for at least one year from date of shipping when stored at -20°C.
RefSeq:	NM_006677.2
RefSeq Size:	4401 bp
RefSeq ORF:	3957 bp
Locus ID:	10869
UniProt ID:	O94966
Cytogenetics:	3p21.31
Protein Families:	Druggable Genome, Protease, Transmembrane
MW:	145.5 kDa
Gene Summary:	<p>Protein ubiquitination controls many intracellular processes, including cell cycle progression, transcriptional activation, and signal transduction. This dynamic process, involving ubiquitin conjugating enzymes and deubiquitinating enzymes, adds and removes ubiquitin. Deubiquitinating enzymes are cysteine proteases that specifically cleave ubiquitin from ubiquitin-conjugated protein substrates. This protein is a ubiquitin protein ligase and plays a role in muscle wasting. Alternatively spliced transcript variants encoding different isoforms have been found for this gene. [provided by RefSeq, May 2017]</p>

Product images:



Circular map for RC214190



Western blot validation of overexpression lysate (Cat# [LY416480]) using anti-DDK antibody (Cat# [TA50011-100]). Left: Cell lysates from untransfected HEK293T cells; Right: Cell lysates from HEK293T cells transfected with RC214190 using transfection reagent MegaTran 2.0 (Cat# [TT210002]).