

Product datasheet for RC214188

PAX8 (NM_013953) Human Tagged ORF Clone

Product data:

Product Type:	Expression Plasmids
Product Name:	PAX8 (NM_013953) Human Tagged ORF Clone
Tag:	Myc-DDK
Symbol:	PAX8
Mammalian Cell Selection:	Neomycin
Vector:	pCMV6-Entry (PS100001)
E. coli Selection:	Kanamycin (25 ug/mL)
ORF Nucleotide Sequence:	>RC214188 representing NM_013953 Red=Cloning site Blue=ORF Green=Tags(s)

TTTTGTAATACGACTCACTATAGGGCGGCCGGAATTCGTCGACTGGATCCGGTACCGAGGAGATCTGCC
GCC**CGATCGCC**

ATGCCTCACAACCTCCATCAGATCTGGCCATGGAGGGCTGAACCAGCTGGGAGGGGCTTTGTGAATGGCA
GACCTCTGCCGGAAGTGGTCCGCCAGCGCATCGTAGACCTGGCCACCAGGGTGTAAAGCCCTGCGACAT
CTCTCGCCAGCTCCGCGTCAGCCATGGCTGCGTCAGCAAGATCCTTGGCAGGTAACGAGACTGGCAGC
ATCCGGCCTGGAGTGATAGGGGGCTCCAAGCCCAAGGTGGCCACCCCAAGGTGGTGGAGAAGATTGGGG
ACTACAAACGCCAGAACCCTACCATGTTTGCCTGGGAGATCCGAGACCGGCTCCTGGCTGAGGGCGTCTG
TGACAATGACACTGTGCCAGTGTGAGCTCCATTAATAGAATCATCCGGACCAAAGTGCAGCAACCATT
AACCTCCCTATGGACAGCTGCGTGGCCACCAAGTCCCTGAGTCCCGGACACACGCTGATCCCCAGCTCAG
CTGTAACCTCCCGGAGTCAACCCAGTCGGATTCCCTGGGCTCCACCTACTCCATCAATGGGCTCCTGGG
CATCGCTCAGCCTGGCAGCGACAAGAGGAAAATGGATGACAGTGATCAGGATAGCTGCCGACTAAGCATT
GACTCACAGAGCAGCAGCAGCGGACCCCGAAAAGCACCTTCGCACGGATGCCTTCAGCCAGCACCACTCG
AGCCGCTCGAGTGCCATTTGAGCGGCAGCACTACCCAGAGGCCATGCCTCCCCAGCCACACCAAAGG
CGAGCAGGGCGAGAGATGGTGGGGCCACGCTGCCGGATACCCACCCACATCCCACCAGCGGACAGG
GCAGCTATGCCTCCTCTGCCATCGCAGGCATGGTGGCAGGAAGTGAATACTCTGGCAATGCCTATGGCCA
CACCCCTACTCCTCTACAGCGAGGCCTGGCGCTTCCCAACTCCAGCTGC

ACGCGTACGCGGCCGCTCGAGCAGAAACTCATCTCAGAAGAGGATCTGGCAGCAAATGATATCCTGGATT
ACAAGGATGACGACGATAAGGTTTAA



[View online »](#)

Protein Sequence: >RC214188 representing NM_013953
Red=Cloning site Green=Tags(s)

MPHNSIRSGHGGLNQLGGAFVNGRPLPEVVRQRIVDLAHQGVRPCDISRQLRVSHGCVSKILGRYYETGS
 IRPGVIGGSKPKVATPKVVEKIGDYKRQNPMTFAWEIRDRLLAEGVCDNDTVPSVSSINRIIRTKVQPPF
 NLPMDSCVATKSLSPGHTLIPSSAVTPPESPQSDSLGSTYSINGLLGIAQPGSDKRKMDSDQDSCRLSI
 DSQSSSSGPRKHLRTDAFSQHHLEPLECFERQHYPEAYASPSHTKGEQGERWWGPRCPDTHPTSPPADR
 AAMPPLPSQAWWQEVNLTAMPMPPTPTPTARPGASPTPAC

TRTRPLEQKLISEEDLAANDILDYKDDDDKV

Chromatograms: https://cdn.origene.com/chromatograms/mk8051_g07.zip

Restriction Sites: SgfI-MluI

Cloning Scheme:

Cloning sites used for ORF Shuttling:



* The last codon before the Stop codon of the ORF

ACCN: NM_013953

ORF Size: 963 bp

OTI Disclaimer: The molecular sequence of this clone aligns with the gene accession number as a point of reference only. However, individual transcript sequences of the same gene can differ through naturally occurring variations (e.g. polymorphisms), each with its own valid existence. This clone is substantially in agreement with the reference, but a complete review of all prevailing variants is recommended prior to use. [More info](#)

OTI Annotation: This clone was engineered to express the complete ORF with an expression tag. Expression varies depending on the nature of the gene.

Components: The ORF clone is ion-exchange column purified and shipped in a 2D barcoded Matrix tube containing 10ug of transfection-ready, dried plasmid DNA (reconstitute with 100 ul of water).

Reconstitution Method:

1. Centrifuge at 5,000xg for 5min.
2. Carefully open the tube and add 100ul of sterile water to dissolve the DNA.
3. Close the tube and incubate for 10 minutes at room temperature.
4. Briefly vortex the tube and then do a quick spin (less than 5000xg) to concentrate the liquid at the bottom.
5. Store the suspended plasmid at -20°C. The DNA is stable for at least one year from date of shipping when stored at -20°C.

RefSeq: [NM_013953.4](#)

RefSeq Size: 3755 bp

RefSeq ORF: 966 bp

Locus ID: 7849

UniProt ID: [Q06710](#)

Cytogenetics: 2q14.1

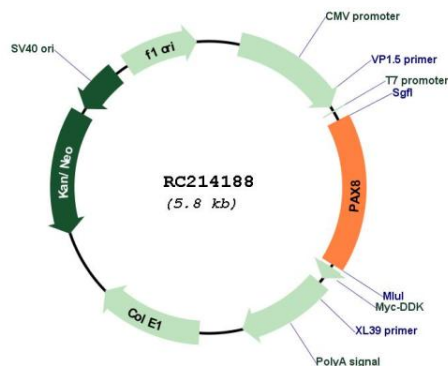
Protein Families: Druggable Genome, Transcription Factors

Protein Pathways: Pathways in cancer, Thyroid cancer

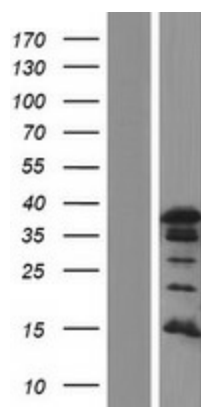
MW: 34.7 kDa

Gene Summary: This gene encodes a member of the paired box (PAX) family of transcription factors. Members of this gene family typically encode proteins that contain a paired box domain, an octapeptide, and a paired-type homeodomain. This nuclear protein is involved in thyroid follicular cell development and expression of thyroid-specific genes. Mutations in this gene have been associated with thyroid dysgenesis, thyroid follicular carcinomas and atypical follicular thyroid adenomas. Alternatively spliced transcript variants encoding different isoforms have been described. [provided by RefSeq, Mar 2010]

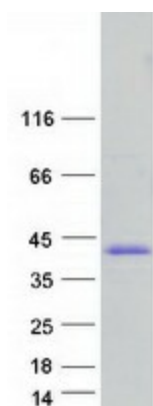
Product images:



Circular map for RC214188



Western blot validation of overexpression lysate (Cat# [LY415551]) using anti-DDK antibody (Cat# [TA50011-100]). Left: Cell lysates from untransfected HEK293T cells; Right: Cell lysates from HEK293T cells transfected with RC214188 using transfection reagent MegaTran 2.0 (Cat# [TT210002]).



Coomassie blue staining of purified PAX8 protein (Cat# [TP314188]). The protein was produced from HEK293T cells transfected with PAX8 cDNA clone (Cat# RC214188) using MegaTran 2.0 (Cat# [TT210002]).