

## Product datasheet for RC214179

### C17orf55 (NM\_178519) Human Tagged ORF Clone

#### Product data:

Product Type:	Expression Plasmids
Product Name:	C17orf55 (NM_178519) Human Tagged ORF Clone
Tag:	Myc-DDK
Symbol:	C17orf55
Synonyms:	FLJ39421; MGC120553; MGC120556
Mammalian Cell Selection:	Neomycin
Vector:	pCMV6-Entry (PS100001)
E. coli Selection:	Kanamycin (25 ug/mL)
ORF Nucleotide Sequence:	>RC214179 ORF sequence Red=Cloning site Blue=ORF Green=Tags(s)

TTTTGTAATACGACTCACTATAGGGCGGCCGGAATTCGTCGACTGGATCCGGTACCGAGGAGATCTGCC  
GCC**CGATCGCC**

ATGCCGAGATCCCTGAAGCGGGCCAGCTCCGTTCACTGCTCCCCGGCCTCCTGCTGTTTCCCACACGC  
AGCCATGGTACAGGGCAGCTCATCCACCACCTCCCCAACCGCAGCCTCCAGGGATGTACACCCTGCCTC  
AGGGGCTGTGCTGGGCCCTGGCTGGTGGAGGGCACAGCCGTAGGGAAGGCCCTCAGCTGCAGGATGCC  
GTGCCTCAGAGACCAACCAGGCCCTCGAAGGCACTGTGGCCGGCCAGATGTCAGCAGCTCCAGCAATTA  
GGCTGGGACAGATGGTGCCTGGTACACAAGGGGACTGTGGGGCCACAGGGGACCCTGCTCACCTGGAC  
CTACCGTGGAGGCCAGGGAGGGAGATGGACTCGAAGGGCGGAAGGGCCAGAGAAGGCACATTTGCAGAG  
CAGCGGCCGCATTTCCAGAGCTCGGGAGCCCAACAGGAATCCCGTCTGGCCATGGGACCACCGCCCTTGG  
GGCTGGGGGATGCCGCAGGGGACGGCAGAGGGCAGACAGGCCAGGAAAAGGGGAGGGCAGAGGGCAGACA  
GGCCAGGAAGAGCGCCTGCAAGTGCCCAAGGAAGGGACCAAAACCAGGCCCTGGACCAGAGCGGCCGCC  
TGGTGGGGCAGGCTGGAAGGGGCAAGGCCAGCGCCAAGGGGAGCAGGTGAGGGACCCTGGTGGGCATC  
TGTGGGAACAAGGCCACGTTTCCCTGCGCACGCTTAAATCAAGGACATTCCTGTGTTCTCCAAAAGT  
GTCGCACACTACATGGGTGTCG

**ACGCGT**ACGCGGCCGCTCGAGCAGAACTCATCTCAGAAGAGGATCTGGCAGCAAATGATATCCTGGATT  
ACAAGGATGACGACGATAAGGTTTAA



[View online »](#)

**Protein Sequence:** >RC214179 protein sequence  
 Red=Cloning site Green=Tags(s)

MPRSLKRAQLRSLPRPPAVSHTQPWYRAAHPPTSPTAASRDVHPASGAVPGPWLEGTAVREGPQLQDA  
 VPQRPTRPSKALWPAQMSAAPA.IRLGQMVPGDTRGLWGPQGTLLTWTYRGGQGGRWTRRAEGPREGTFAE  
 QRPHFQSSGAQQESRLAMGPPPLGLGDAAGDGRGQTGQEKGRAEGRQARKSACKCPRKGNPWPTRAAA  
 WWGRLEGAKASAKGEQVRDPGGHLWEQGHVSPCARFNQGHSCGSPKVSHTTWVS

TRTRPLEQKLISEEDLAANDILDYKDDDDKV

**Chromatograms:** [https://cdn.origene.com/chromatograms/mk6449\\_a05.zip](https://cdn.origene.com/chromatograms/mk6449_a05.zip)

**Restriction Sites:** SgfI-MluI

**Cloning Scheme:**

Cloning sites used for ORF Shuttling:



\* The last codon before the Stop codon of the ORF

**ACCN:** NM\_178519

**ORF Size:** 792 bp

**OTI Disclaimer:** The molecular sequence of this clone aligns with the gene accession number as a point of reference only. However, individual transcript sequences of the same gene can differ through naturally occurring variations (e.g. polymorphisms), each with its own valid existence. This clone is substantially in agreement with the reference, but a complete review of all prevailing variants is recommended prior to use. [More info](#)

**OTI Annotation:** This clone was engineered to express the complete ORF with an expression tag. Expression varies depending on the nature of the gene.

**Components:** The ORF clone is ion-exchange column purified and shipped in a 2D barcoded Matrix tube containing 10ug of transfection-ready, dried plasmid DNA (reconstitute with 100 ul of water).

- Reconstitution Method:**
1. Centrifuge at 5,000xg for 5min.
  2. Carefully open the tube and add 100ul of sterile water to dissolve the DNA.
  3. Close the tube and incubate for 10 minutes at room temperature.
  4. Briefly vortex the tube and then do a quick spin (less than 5000xg) to concentrate the liquid at the bottom.
  5. Store the suspended plasmid at -20°C. The DNA is stable for at least one year from date of shipping when stored at -20°C.

**RefSeq:** [NM\\_178519.2](#), [NP\\_848614.1](#)

**RefSeq Size:** 2970 bp

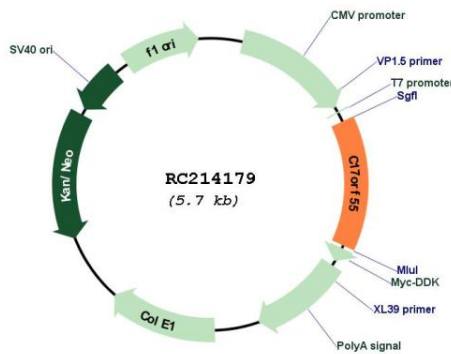
**RefSeq ORF:** 794 bp

**Locus ID:** 284185

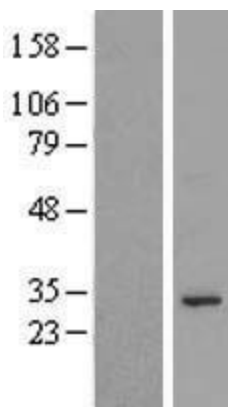
**Cytogenetics:** 17q25.3

**MW:** 28.3 kDa

**Product images:**



Circular map for RC214179



Western blot validation of overexpression lysate (Cat# [LY405902]) using anti-DDK antibody (Cat# [TA50011-100]). Left: Cell lysates from untransfected HEK293T cells; Right: Cell lysates from HEK293T cells transfected with RC214179 using transfection reagent MegaTran 2.0 (Cat# [TT210002]).