

## Product datasheet for RC214177

### KRT33A (NM\_004138) Human Tagged ORF Clone

#### Product data:

**Product Type:** Expression Plasmids  
**Product Name:** KRT33A (NM\_004138) Human Tagged ORF Clone  
**Tag:** Myc-DDK  
**Symbol:** KRT33A  
**Synonyms:** Ha-3I; HA3I; hHa3-I; K33A; Krt1-3; KRTHA3A  
**Mammalian Cell Selection:** Neomycin  
**Vector:** pCMV6-Entry (PS100001)  
**E. coli Selection:** Kanamycin (25 ug/mL)  
**ORF Nucleotide Sequence:** >RC214177 representing NM\_004138  
 Red=Cloning site Blue=ORF Green=Tags(s)

TTTTGTAATACGACTCACTATAGGGCGGCCGGAATTCGTCGACTGGATCCGGTACCGAGGAGATCTGCC  
 GCC**CGATCGCC**

ATGTCTTACAGTTGTGGCCTGCCAGCCTGAGCTGCCGCACCAGCTGCTCCTCCCGGCCCTGTGTGCCCC  
 CCAGCTGCCACGGCTGCACCCTGCCCGGGGCTGCAACATCCCGCCAATGTGAGCAACTGCAACTGGTT  
 CTGTGAGGGCTCCTTCAATGGCAGTGAGAAGGAGACCATGCAGTTCCTGAACGACCGCTGGCCAGCTAC  
 CTGGAGAAGGTGCGTCAGCTGGAGCGGGACAACCGGAGCTGGAGAACCATCCGGGAGCGGTACACAGC  
 AGCAGGAGCCCTTGGTGTGTGCCAGCTACCAGTCTACTCAAGACCATTGAGGAGCTCCAGCAGAAGAT  
 CCTGTGCAGCAAGTCTGAGAATGCCAGGCTTGTGGTGCAGATCGACAATGCCAAGCTGGCCCTCAGATGAC  
 TTCAGGACCAATATGAGACCGAGCTGTCCCTGCGGCAGCTGGTGGAGTCGGACATCAATGGCCTGCGCA  
 GGATCCTGGATGAGCTGACCCTGTGAGGTCTGACCTGGAGGCCAGGTGGAGTCCCTGAAGGAGGAGCT  
 GCTGTGCCTCAAGCAGAACCATGAGCAGGAGGTTAACACCCTGCGCTGCCAGCTTGGAGACCGCCTCAAC  
 GTGGAGGTGGACGCTGCTCCACTGTGGACCTGAACCAGTCTGAATGAGACCAGGAGTCAGTATGAGG  
 CCCTGGTGGAAACCAACCGCAGGGAAGTGGAGCAATGTTCCGCCACGCAGACCGAGGAGCTGAACAAGCA  
 GGTGGTATCCAGCTCGGAGCAGCTGCAGTCTACCAGGCGGAGATCATCGAGCTGAGACGCACGGTCAAT  
 GCCCTGGAGATCGAGCTGCAGGCCAGCACAACCTGCGAGACTCTGGAAAACACGCTGACAGAGAGCG  
 AGGCCCGCTACAGCTCCAGCTGTCCAGGTGCAGAGACTGATCACCACGTTGGAGTCCCAGCTGGCGGA  
 GATCCGCAAGTGCCTGGAGCGGCAGAACCAGGAGTATCAGGTGCTGCTGGACGTGCGGGCGCGGCTGGAG  
 TGTGAGATCAACACGTACCGGAGCTGTGGAGAGCGAGGACTGCAAGCTCCCCTCAACCCTGCGCCA  
 CAACCAATGCATGTGACAAGTCCACTGGGCCCTGTATCTCTAATCCCTGTGGCCTACGTGCTCGGTGTGG  
 GCCTTGCAACACATTTGGGTAC

**ACGCGT**ACGCGGCCGCTCGAGCAGAACTCATCTCAGAAGAGGATCTGGCAGCAATGATATCCTGGATT  
 ACAAGGATGACGACGATAAGGTTTAA



**Protein Sequence:** >RC214177 representing NM\_004138  
Red=Cloning site Green=Tags(s)

MSYSCGLPSLSCRTSCSSRPCVPPSCHGCTLPGACNIPANVSNCNWFCEGSFNGSEKETMQFLNDRASY  
 LEKVRLERDNAELENLIRERSQQEPLVCASYQSYFKTIEELQKILCSKSENARLVVQIDNAKLASDD  
 FRTKYETELSLRQLVESDINGLRRILDELTLCRSDLEAQVESLKEELLCLKQNHQEVNTRCQLGDRLN  
 VEVDAAPTVDLNQVLNETRSQYEALVETNRREVEQWFATQTEELNKQVVSSEQLQSYQAEIIELRRTVN  
 ALEIEIQAQHNL RDSLENTL TESEARYSSQLSQVORLITNVESQLAEIRSDLERQNEYQVLLDVRARLE  
 CEINTYRSLLESEDCKLPSNPCATTNACDKSTGPCISNPCGLRARCGPCNTFGY

TRTRPLEQKLISEEDLAANDILDYKDDDDKV

**Chromatograms:** [https://cdn.origene.com/chromatograms/ja1294\\_h11.zip](https://cdn.origene.com/chromatograms/ja1294_h11.zip)

**Restriction Sites:** SgfI-MluI

**Cloning Scheme:**



\* The last codon before the Stop codon of the ORF

**ACCN:** NM\_004138

**ORF Size:** 1212 bp

**OTI Disclaimer:** The molecular sequence of this clone aligns with the gene accession number as a point of reference only. However, individual transcript sequences of the same gene can differ through naturally occurring variations (e.g. polymorphisms), each with its own valid existence. This clone is substantially in agreement with the reference, but a complete review of all prevailing variants is recommended prior to use. [More info](#)

**OTI Annotation:** This clone was engineered to express the complete ORF with an expression tag. Expression varies depending on the nature of the gene.

**Components:** The ORF clone is ion-exchange column purified and shipped in a 2D barcoded Matrix tube containing 10ug of transfection-ready, dried plasmid DNA (reconstitute with 100 ul of water).

**Reconstitution Method:**

1. Centrifuge at 5,000xg for 5min.
2. Carefully open the tube and add 100ul of sterile water to dissolve the DNA.
3. Close the tube and incubate for 10 minutes at room temperature.
4. Briefly vortex the tube and then do a quick spin (less than 5000xg) to concentrate the liquid at the bottom.
5. Store the suspended plasmid at -20°C. The DNA is stable for at least one year from date of shipping when stored at -20°C.

**Note:** Plasmids are not sterile. For experiments where strict sterility is required, filtration with 0.22um filter is required.

**RefSeq:** [NM\\_004138.4](#)

**RefSeq Size:** 1252 bp

**RefSeq ORF:** 1215 bp

**Locus ID:** 3883

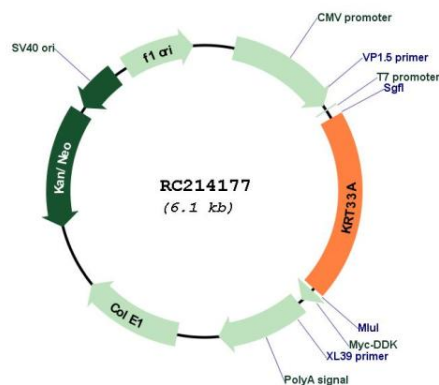
**UniProt ID:** [O76009](#)

**Cytogenetics:** 17q21.2

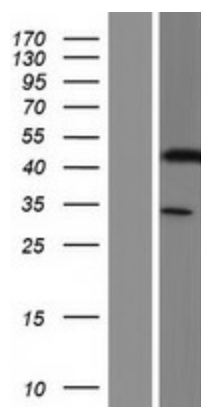
**MW:** 45.8 kDa

**Gene Summary:** This gene encodes a member of the keratin gene family. This gene is one of multiple type I hair keratin genes that are clustered in a region of chromosome 17q12-q21 and have the same direction of transcription. As a type I hair keratin, the encoded protein is an acidic protein which heterodimerizes with type II keratins to form hair and nails. There are two isoforms of this protein, encoded by two separate genes, keratin 33A and keratin 33B. [provided by RefSeq, May 2012]

### Product images:



Circular map for RC214177



Western blot validation of overexpression lysate (Cat# [LY418184]) using anti-DDK antibody (Cat# [TA50011-100]). Left: Cell lysates from untransfected HEK293T cells; Right: Cell lysates from HEK293T cells transfected with RC214177 using transfection reagent MegaTran 2.0 (Cat# [TT210002]).