

## Product datasheet for RC214172

### SEMA6D (NM\_024966) Human Tagged ORF Clone

#### Product data:

Product Type:	Expression Plasmids
Product Name:	SEMA6D (NM_024966) Human Tagged ORF Clone
Tag:	Myc-DDK
Symbol:	SEMA6D
Mammalian Cell Selection:	Neomycin
Vector:	pCMV6-Entry (PS100001)
E. coli Selection:	Kanamycin (25 ug/mL)
ORF Nucleotide Sequence:	>RC214172 representing NM_024966. Blue=ORF Red=Cloning site Green=Tag(s)

```
GCTCGTTTAGTGAACCGTCAGAATTTTGTAAACGACTCACTATAGGGCGGCCGGGAATTCGTCGACTG
GATCCGGTACCGAGGAGATCTGCCGCCGCGATCGCC
ATGAGGGTCTTCCTGCTTTGTGCTACATACTGCTGCTGATGGTTTCCAGTTGAGGGCAGTCAGCTTT
CCTGAAGATGATGAACCCCTTAATACTGTGCACTATCACTATTCAAGGCAATATCCGGTTTTAGAGGA
CGCCCTTCAGGCAATGAATCGCAGCACAGGCTGGACTTTCAGCTGATGTTGAAAATTCGAGACACACTT
TATATTGCTGGCAGGGATCAAGTTTATACAGTAACTTAAATGAAATGCCAAAACAGAAGTAATACCA
AACAGAAACTGACATGGCGATCAAGACAACAGGATCGAGAAAAGTGTGCTATGAAAGCAAGCATAAA
GATGAATGCCACAACCTTATCAAAGTATTTGTTCCAAGAACGATGAGATGGTTTTGTTGTGGTACC
AATGCATTCAATCCCATGTGTAGATACTACAGGTTGAGTACCTTAGAATATGATGGGGAAGAAATTAGT
GGCCTGGCAAGATGCCCATTTGATGCCAGACAAACCAATGTTGCCCTCTTTGCTGATGGGAACTGTAT
TCTGCCACAGTGGCTGACTTCTTGCCAGCGATGCCGTTATTTATCGAAGCATGGGTGATGGATCTGCC
CTTCGCACAATAAAATATGATCCAAAATGGATAAAAGAGCCACACTTTCTTCATGCCATAGAATATGGA
AACTATGTCTATTTCTTTTCGAGAAATCGCTGTGCAACATAAATTTAGGCAAGGCTGTGATTCC
CGCGTGGCCCGCATATGAAAAACGACATGGGTGGTCCAGCGGGTCTGGAGAAACACTGGACTTCA
TTTCTAAAGGCTCGGCTGAAGTCTGTCCCTGGAGATTCGTTTTTCTACTTTGATGTTCTGCAGTCT
ATTACAGACATAATACAAATCAATGGCATCCCCACTGTGGTGGGGTGTACCACGCAGCTCAATAGC
ATCCCTGGTTCTGCTGTCTGTGCAATTTAGCATGGATGACATTGAAAAAGTATTCAAAGGACGGTTTAAAG
GAACAGAAAACCTCAGATTCTGTTTGGACAGCAGTTCGGAAGACAAAGTGCCAAAGCCAAGGCCTGGC
TGTTGTGCAAAACACGGCCTTGCCGAAGCTTATAAAACCTCCATCGATTTCCCGGATGAAACTCTGTCA
TTCATCAAATCTCATCCCTGATGGACTCTGCCGTTCCACCCATTGCCGATGAGCCCTGGTTACAAAAG
ACTCGGTCAGGTACAGACTGACGGCCATCTCAGTGGACCATTAGCCGGACCCTACCAGAACTACACA
GTCATCTTTGTTGGCTCTGAAGCTGGCATGGTACTTAAAGTCTGGCAAAGACCAGTCCCTTTCTCTTTG
AACGACAGCGTATTACTGGAAGAGATTGAAGCCTACAACCATGCAAAG
ACGCGTACGCGGCCGCTCGAGCAGAAACTCATCTCAGAAGAGGATCTGGCAGCAAATGATATCCTGGAT
TACAAGGATGACGACGATAAGGTTTAAACGGCCGGC
```



[View online >](#)

**Protein Sequence:** >Peptide sequence encoded by RC214172  
 Blue=ORF Red=Cloning site Green=Tag(s)

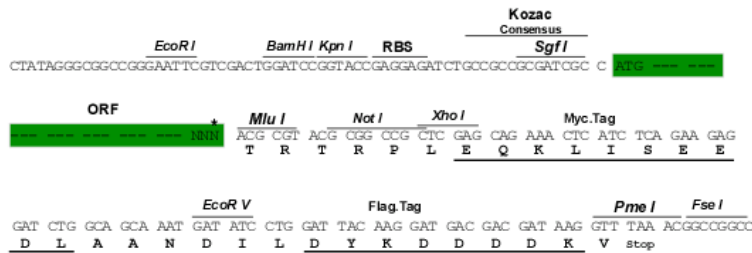
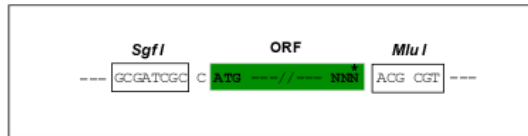
MRVFLLCAYILLMLMVSQLRVSPFEDDEPLNTVDYHYSRQYPVFRGRPSGNESQHRLDFQLMLKIRDTL  
 YIAGRQVYTVNLMNPKTEVIPNKKLTWRSRQQDRENCAMKGGKHKDECHNFIKVFVPRNDEMVFVCGT  
 NAFNPMCRYRLSTLEYDGEEISGLARCPFDARQTNVALFADGKLYSATVADFLASDAVIYRSMGDGSA  
 LRTIKYDSKWIKPEPHFLHAI EYGNVYVFFREIAVEHNNLGKAVYSRVARICKNDMGGSQRVLEKHWTS  
 FLKARLNCSVPGDSFFYFDVLQSITDIIQINGIPTVVGVFTTQLNSIPGSAVCAFMSDDIEKVKGRFK  
 EQKTPDSVWTVAVPEDKVPKPRPGCCAKHGLAEAYKTSIDFPDETLSEIKSHPLMSAVPPIADEPWFTK  
 TRVRYRLTAISVDHSAGPYQNYTVIFVGSEAGMVLKVLAKTSPFSLNDSVLLLEEIEAYNHAK  
 TRTRPLEQKLISEEDLAANDILDYKDDDDKV

**Chromatograms:** [https://cdn.origene.com/chromatograms/mg4119\\_h09.zip](https://cdn.origene.com/chromatograms/mg4119_h09.zip)

**Restriction Sites:** SgfI-MluI

**Cloning Scheme:**

Cloning sites used for ORF Shuttling:



\* The last codon before the Stop codon of the ORF

**ACCN:** NM\_024966

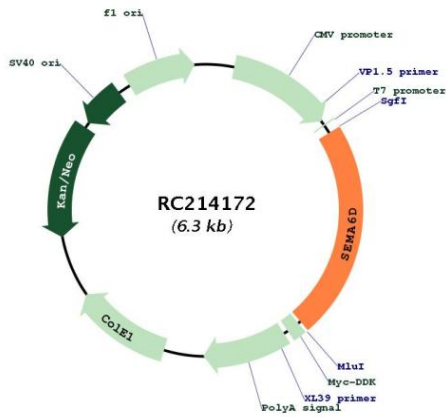
**ORF Size:** 1428 bp

**OTI Disclaimer:** Due to the inherent nature of this plasmid, standard methods to replicate additional amounts of DNA in E. coli are highly likely to result in mutations and/or rearrangements. Therefore, OriGene does not guarantee the capability to replicate this plasmid DNA. Additional amounts of DNA can be purchased from OriGene with batch-specific, full-sequence verification at a reduced cost. Please contact our customer care team at [custsupport@origene.com](mailto:custsupport@origene.com) or by calling 301.340.3188 option 3 for pricing and delivery.

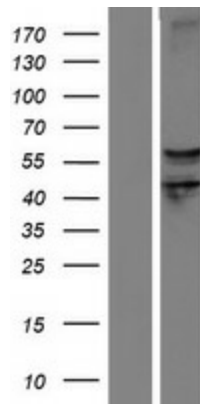
The molecular sequence of this clone aligns with the gene accession number as a point of reference only. However, individual transcript sequences of the same gene can differ through naturally occurring variations (e.g. polymorphisms), each with its own valid existence. This clone is substantially in agreement with the reference, but a complete review of all prevailing variants is recommended prior to use. [More info](#)

<b>OTI Annotation:</b>	This clone was engineered to express the complete ORF with an expression tag. Expression varies depending on the nature of the gene.
<b>Components:</b>	The ORF clone is ion-exchange column purified and shipped in a 2D barcoded Matrix tube containing 10ug of transfection-ready, dried plasmid DNA (reconstitute with 100 ul of water).
<b>Reconstitution Method:</b>	<ol style="list-style-type: none"><li>1. Centrifuge at 5,000xg for 5min.</li><li>2. Carefully open the tube and add 100ul of sterile water to dissolve the DNA.</li><li>3. Close the tube and incubate for 10 minutes at room temperature.</li><li>4. Briefly vortex the tube and then do a quick spin (less than 5000xg) to concentrate the liquid at the bottom.</li><li>5. Store the suspended plasmid at -20°C. The DNA is stable for at least one year from date of shipping when stored at -20°C.</li></ol>
<b>RefSeq Size:</b>	2290 bp
<b>RefSeq ORF:</b>	1431 bp
<b>Locus ID:</b>	80031
<b>UniProt ID:</b>	<a href="#">Q8NFY4</a>
<b>Cytogenetics:</b>	15q21.1
<b>Domains:</b>	Sema
<b>Protein Families:</b>	Druggable Genome, Transmembrane
<b>Protein Pathways:</b>	Axon guidance
<b>MW:</b>	54.2 kDa
<b>Gene Summary:</b>	Semaphorins are a large family, including both secreted and membrane associated proteins, many of which have been implicated as inhibitors or chemorepellents in axon pathfinding, fasciculation and branching, and target selection. All semaphorins possess a semaphorin (Sema) domain and a PSI domain (found in plexins, semaphorins and integrins) in the N-terminal extracellular portion. Additional sequence motifs C-terminal to the semaphorin domain allow classification into distinct subfamilies. Results demonstrate that transmembrane semaphorins, like the secreted ones, can act as repulsive axon guidance cues. This gene encodes a class 6 vertebrate transmembrane semaphorin that demonstrates alternative splicing. Several transcript variants have been identified and expression of the distinct encoded isoforms is thought to be regulated in a tissue- and development-dependent manner. [provided by RefSeq, Nov 2010]

Product images:



Circular map for RC214172



Western blot validation of overexpression lysate (Cat# [LY410960]) using anti-DDK antibody (Cat# [TA50011-100]). Left: Cell lysates from untransfected HEK293T cells; Right: Cell lysates from HEK293T cells transfected with RC214172 using transfection reagent MegaTran 2.0 (Cat# [TT210002]).