

## Product datasheet for RC214167

### PTPRD (NM\_001040712) Human Tagged ORF Clone

#### Product data:

Product Type:	Expression Plasmids
Product Name:	PTPRD (NM_001040712) Human Tagged ORF Clone
Tag:	Myc-DDK
Symbol:	PTPRD
Synonyms:	HPTP; HPTPD; HPTPDELTA; PTPD; R-PTP-delta; RPTPDELTA
Vector:	pCMV6-Entry (PS100001)
E. coli Selection:	Kanamycin (25 ug/mL)
Cell Selection:	Neomycin
ORF Nucleotide Sequence:	>RC214167 representing NM_001040712 Red=Cloning site Blue=ORF Green=Tags(s)

TTTTGTAATACGACTCACTATAGGGCGCCGGAATTCGTCGACTGGATCCGGTACCGAGGAGATCTGCC  
GCCGCGATCGCC

ATGGTGCACGTAGCCAGGCTGCTGCTGCTCCTCACTTTCTTCTCCGCACGGATGCTGAGACACCTC  
CAAGGTTTACACGAACACCCGTTGATCAGACAGGGGTCTCTGGCGGAGTTGCCTTTTCATCTGCCAAGC  
TACGGGAGACCAAGACCTAAAATTGTCTGGAACAAAAAGGAAAGAAAGTCAGCAATCAGAGATTTGAG  
GTAAATAGAGTTTGACGATGGGTCTGGATCAGTTCTCAGAATACAACCTTACGGACTCCGAGGGATGAGG  
CCATTTATGAATGTGTGGCCTCAAATAATGTGGGAGAAATAAGTGTATCCACCAGACTCACAGTTTTGCG  
GGAAGATCAAATCCCAGGGGCTTCCCTACCATTGACATGGGCCACAGTTGAAGGTGGTTGAGCGTACT  
CGCACGGCCACCATGCTTTGTGCAGCCAGTGGTAATCCGGATCCAGAAATCACTTGGTTTAAAGATTTCT  
TACCTGTGGACACAAGCAACAACAATGGTCGTATTAAGCAGTTACGATCAGGTGGTACACCAATAAGAGG  
AGCCCTCAGATTGAGCAGAGTGAAGAGTCTGACCAAGGAAAATATGAGTGTGTTGCCACCAACAGCGCG  
GGCACTCGCTATCCGCTCCTGCCAATTTATATGTCAGAGAGCTGCGAGAAGTTCGCCGTGTTCCACCAA  
GATTTCTATCCCACCCACTAATCATGAAATCATGCCAGGCGGAAGCGTTAATATCACCTGTGTGGCCCT  
GGGGTACCAATGCCTTATGTAAGTGGATGTTGGGGCAGAAGATCTGACACCTGAAGATGATATGCCA  
ATAGGAAGAAATGTGCTAGAAGTGAATGATGTAAGACAGTCAGCAAATTACACCTGTGTTGCTATGTCAA  
CACTGGGTGTCATTGAAGCAATAGCACAGATCACTGTCAAAGCCTTACCCAAACCTCCAGGAACTCCTGT  
AGTGACCAGAGCACAGCTACAAGCATCACTGACGTGGGACTCTGGGAACCCTGAGCCTGTTTCTTAT  
TACATAATTCAGCATAAACCTAAAACTCTGAGGAACTTTACAAAGAAATGATGGGGTGGCGACCACAC  
GCTACAGTGTGCTGGACTAAGTCCCTACTCGGATTTATGAATTCAGGGTGTGTTGCTGTAATAACATTGG  
GCGGGGGCCTCCAGCGAACCTGTGCTAACACAAACCTCAGAGCAAGCACCATCCAGTGCCTCCGAGGGAT  
GTCCAGGCACGAATGTTGAGTTCGACCACCATTTTGGTACAGTGAAGGAACCTGAAGAGCCAAATGGAC  
AGATCCAAGGATATAGAGTTTATTATACAATGGATCCCACTCAACATGTCAACAACCTGGATGAAACACAA  
TGTAGCTGACAGCCAAATCACTACTATTGGCAACTTAGTGCCCAAGAAAACATATTCTGTCAAAGTCCCTG  
GCTTTTACCTCAATTGGAGATGGTCCCCTTTCAAGTGACATACAAGTCATCACTCAGACAGGAGTACCAG



[View online >](#)

GGCAGCCACTAAACTTCAAAGCAGAACCTGAGTCTGAAACAAGTATTTTGTCTCTTGGACACCTCCACG  
TTCAGATACCATTGCCAATATGAACTGGTCTACAAAGATGGGGAGCATGGAGAGGACCAACGAATTACC  
ATTGAGCCAGGGACATCATATAGGCTGCAAGGACTGAAACCAAACAGCTTATACTATTTCCGTCTGGCTG  
CACGCTCCCTCAAGGCCTGGGTGCTTCTACTGCAGAAATATCAGCTAGAACCATGCAGTCAATGTTTG  
AAAAATTTTTCATGTCAAAGCAGTAATGAAGACTTCCGTGTTGCTGTCTTGGGAGATTCCAGAGAATTAT  
AACTCCGCCATGCCTTTCAAATTTCTTATGATGATGGGAAAATGGTGAAGAAGTGGATGGCCGAGCCA  
CACAGAAGTTAATTGTCAACCTGAAGCCTGAGAAATCATATTCATTTGTGCTGACAAATCGTGAAACAG  
TGCTGGTGGGCTGCAGCACAGGGTCACGGCAAAGACTGCACCAGATGTATTACGTACCAAGCCTGCCTTC  
ATTGGGAAGACCAACTTGGATGGCATGATTACTGTGCAACTGCCTGAAGTACCTGCAATGAGAATATAA  
AAGTTACTACATAATAATTGTGCCTTTGAAGAAATCTCGCGGAAATTTATCAAGCCATGGGAGAGTCC  
AGATGAAATGGAATTAGATGAGCTGCTTAAAGGAGATATCTAGGAAGCGCAGAAGCATCCGTTATGGGAGA  
GAAGTTGAATTAAGCCATATATTGCCGCTCACTTTGTGCTTCCACTGAGTTCACCCTGGGGGATG  
ACAAGCATTATGGTGGATTTACAAACAAGCAACTCCAAAGTGGTCAAGAATATGTCTTGTGTTAGC  
AGTAATGGAACATGCAGAGTCTAAGATGTATGCAACCAGCCCTACTCCGACCCCGTGGTGTCAATGGAT  
CTGGATCCGACGCAATCACGGATGAAGAAGAAGGCTTGATCTGGGTTGTAGGCTCTGCCTTGCAGTGG  
TCTTTATCATCTGCATTGTCTATTCTTCTTTATAAAAAGTAAACCCGACAGGAAGAGGGCAGAGTC  
CGACTCTAGAAAAGCAGCATACCGAACATAAAGGAGATCCCTTACACCACCCAACAGACCCTGTAGAA  
CTGAGGGCCCTTAACTTTCAAACACCGGGTATGGCTAGCCATCCCTCCAATACCCATCTTGGAACTTGCAG  
ACCACATTGAAAGATTGAAAGCAAATGACAACCTTGAAGTTTTCCAGGAATATGAGTCAATTGACCCTGG  
CCAGCAGTTCACCTGGGAACATTCAAACTTGAAGTAAACAAACCAAAGAATAGATACCGGAATGTAATC  
GCATATGATCATTCCCGGTTCTCCTATCAGCTATAGAAGGGATCCAGGAAGTACTATGTGAATGCCA  
ACTACATAGATGGGTATAGGAAGCAAAATGCCTATATTGCAACACAGGGATCTCTCCCGAAACATTTGG  
GGACTTTTGGAGAATGATATGGGAACAACGGAGTGCCACAGTTGTCATGATGACAAAATAGAAGAAGA  
TCAAGGGTGAAGTGTGACCAGTATTGGCCTAGCAGAGGCACAGAAACCCACGGACTCGTTCAAGTAACGC  
TGCTTGATACTGTGGAGCTGGCCACATATTGTGTTGCAACATTTGCACTTTACAAGAATGGTTCAAGTGA  
GAAGAGAGAAGTGAACAATTCCAGTTCACCGCCTGGCCTGATCATGGTGTCCAGAACACCCTACACCT  
TTTCTAGCTTTCTACGTAGAGTCAAACCTGTAAACCCTCCCGATGCTGGTCCGATGGTTGTGCACTGCA  
GTGCGGGAGTGGCCGACTGGTTGCTTATCGTCATAGATGCCATGTTAGAAAGAATAAAGCATGAAAA  
AACTGTAGATATTTATGGCCATGTAACCTTAAAGAGAGCCAGAGGAATATATGTTTCAAACAGAAAGC  
CAATACATCTTTATCCATGATGCACTGTTAGAAGCAGTACTTGTGAAAATACCGAAGTCCAGCTAGAA  
ACTTGTATGCCTACATTCAGAAGCTGACACAAATAGAAACGGGAGAGAATGTCACAGGAATGGAGCTCGA  
ATTTAAGCGTCTAGCCAGCTCAAAGCTCACACCTCAAGGTTTATCAGTGCCAATCTTCCATGTAATAAA  
TTCAAAAATCGCCTTGTTAATATTATGCCATATGAATCCACAAGGGTATGCCTGCAGCCTATCCGTGGAG  
TAGAAGGATCTGATTACATCAATGCCAGTTTTATTGATGGATACAGACAACAGAAAGCCTACATCGCTAC  
CCAGGGGCCCTTGGCAGAGACCACTGAAGACTTCTGGCGGATGCTCTGGGAACACAATCCACCATAGTT  
GTGATGCTCACCAGCTGCGTGAATGGCAGAGAGAAATGTCACCAATACTGGCCAGCAGAACGGTCTG  
CAAGATACCAGTACTTTGTTGATAGTCCATGGCTGAGTACAACATGCCACAGTATATCCTAAGGGAATT  
CAAGGTACAGATGCCAGGGACGGCCAGTCCCGAACAGTAAGGCAGTTCAGTTCAGTACTGACTGGCCAGAG  
CAAGGAGTGCCAAAGTCCGGAGAAGGATTTATTGACTTTCATCGGCCAAGTCCATAAAAACAAAAGAACAGT  
TTGGCCAAGATGGACCCATTTCAAGTCCATTGCAGCGCGGGGTTGGAAGAAGTGGAGTCTTCATAACGCT  
AAGCATTGTTTTGAAAAGATGAGATATGAAGGAGTTGTAGATATCTTCCAGACTGTCAAATGTTAAGA  
ACACAACGACCAGCTATGGTACAGACAGAGGATCAATATCAGTTTTCTATCGTGCCGCACTAGAGTACC  
TGGCAGCTTTGACCACTATGCAACG

ACGCGTACGCGGCCGCTCGAGCAGAACTCATCTCAGAAGAGGATCTGGCAGCAATGATATCCTGGATT  
ACAAGGATGACGACGATAAGGTTTAA

Protein Sequence:

>RC214167 representing NM\_001040712  
 Red=Cloning site Green=Tags(s)

```
MVHVARLLLLLLTFFLRDTAETPPRFTRTPVDQTVSGGVASFICQATGDPRPKIVWNKKGKKVSNQRFE
VIEFDDGSGSVLRIQPLRTPRDEAIYECVASNNVGEISVSTRLTVLREDQIPRGFPTIDMGPQLKVVERT
RTATMLCAASGNPDPEITWFKDFLPVDTSNNGRIKQLRSGGTPIRGALQIEQSEESDQGYECVATNSA
GTRYSAPANLYVRELREVRVPPRF SIPPNTNHEIMPGGSVNITCVAVGSPMPYVKWMLGAEDLTPEDDMP
IGRNVLELNDVRQSANYTCVAMSTLGVIEAIAQITVKALPKPGTPVVTESTATSITLTWDSGNPEPVSY
YIIQHKKPKNSEELYKEIDGVATTRYVAVGLSPYSYEFVAVVAVNNIGRPPSEPVLTTQTEQAPSSAPRD
VQARMLSTTILVQWKEPEEPNGQIQGYRVYVYTMPTQHVNNWMKHNVADSQITTIIGNLVQPKTYSVKVL
AFTSIGDGPLSSDIQVITQTVPGQPLNFKAEPESETSILLSWTPPRSDTIANVELVYKDGHEGEEQRIT
IEPGTSYRLQGLKPNLYFRLAARSPQGLGASTAEISARTMQSMFAKNFHVAVMKT SVLLSWEIPENY
NSAMPFKILYDDGKMVEEVDGRATQKLI VNLKPEKSYFVLTNRGNSAGGLQHRVTAKTAPDVLRTKPAF
IGKTNLDGMITVQLPEVPANENIKGYYIIIVPLKKSARGKFIKPWESPDEMEDELLEKISRKRIRYGR
EVELKPYIAAHFDVLPTEFTLGDGDKHYGGFTNKQLQSGQEYVFFVLAVMEHAESKMYATSPYSDPVVSM
LDPQPI TDEEEGLI WVVGPVLAVVFIICIVIAILLYKSKPDRKRAESDSRKS SIPPNNKEIPSHHPTDPE
LRRLNFTQPGMASHPPPILELADHIERLKANDNLKFSQYESI DPQQFTWEHSNLEVNKPKNRYANVI
AYDHSRVLLSAIEGIPGSDYVNANYIDGYRQKQAYIATQGLPETFGDFWRMIWEQRSATVVMTKLEER
SRVKCDQYWP SRGTETHGLVQVTLDDTVELATYCVRTFALYKNGSSEKREVRQFQFTAWPDHGVPEHPTP
FLAFLRRVKT CNPPDAGPMVHCSAGVGRGCFIVIDAMLERIKHEKTVDIYGHVTLMRAQRNYMVQTED
QYIFIH DALLEAVTCGNTEVPARNLYAYIQKL TQIETGENVTGMELEFKRLASSKAHTSRFISANLPCNK
FKNRLVNIMPYESTRVCLQPIRGVEGSDYINASFIDGYRQKQAYIATQGLAETTEDFWRMLWEHNSTIV
VMLTKLREMGREKCHQYWPAERSARYQYFVVDPMAEYNMPQYIILREFKVT DARDGQSRTVRQFQFTDWPE
QGVPKSGEGFIDF IGQVHKTKEQFGDGPISVHCSAGVGRGTFITLSIVLERMRMYEGVVDIFQTVKMLR
TQRPAMVQTEDQYQFSYRAALEYLGSFDHYAT
```

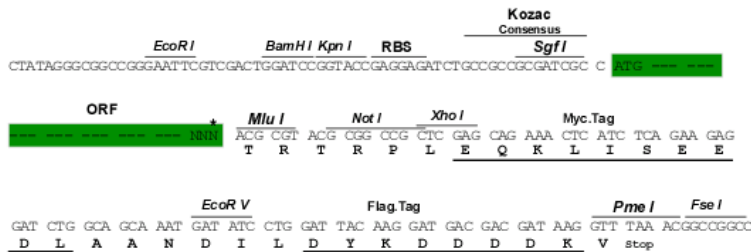
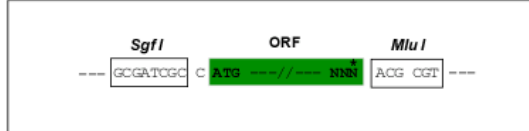
TRTRPLEQKLISEEDLAANDILDYKDDDDKV

Restriction Sites:

SgfI-MluI

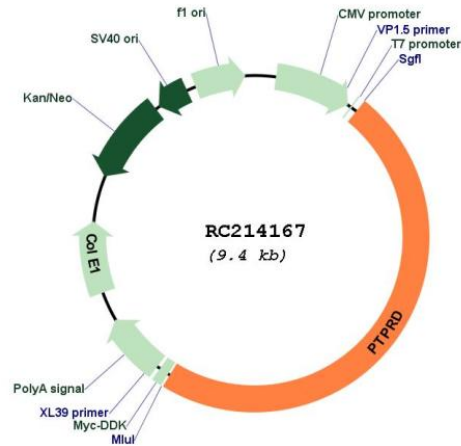
Cloning Scheme:

Cloning sites used for ORF Shuttling:



\* The last codon before the Stop codon of the ORF

Plasmid Map:



ACCN: NM\_001040712

ORF Size: 4506 bp

OTI Disclaimer: The molecular sequence of this clone aligns with the gene accession number as a point of reference only. However, individual transcript sequences of the same gene can differ through naturally occurring variations (e.g. polymorphisms), each with its own valid existence. This clone is substantially in agreement with the reference, but a complete review of all prevailing variants is recommended prior to use. [More info](#)

OTI Annotation: This clone was engineered to express the complete ORF with an expression tag. Expression varies depending on the nature of the gene.

Components: The ORF clone is ion-exchange column purified and shipped in a 2D barcoded Matrix tube containing 10ug of transfection-ready, dried plasmid DNA (reconstitute with 100 ul of water).

<b>Reconstitution Method:</b>	<ol style="list-style-type: none"><li>1. Centrifuge at 5,000xg for 5min.</li><li>2. Carefully open the tube and add 100ul of sterile water to dissolve the DNA.</li><li>3. Close the tube and incubate for 10 minutes at room temperature.</li><li>4. Briefly vortex the tube and then do a quick spin (less than 5000xg) to concentrate the liquid at the bottom.</li><li>5. Store the suspended plasmid at -20°C. The DNA is stable for at least one year from date of shipping when stored at -20°C.</li></ol>
<b>RefSeq:</b>	<u>NM_001040712.2, NP_001035802.1</u>
<b>RefSeq Size:</b>	8257 bp
<b>RefSeq ORF:</b>	4509 bp
<b>Locus ID:</b>	5789
<b>Cytogenetics:</b>	9p24.1-p23
<b>Protein Families:</b>	Druggable Genome, Phosphatase, Transmembrane
<b>MW:</b>	169.3 kDa
<b>Gene Summary:</b>	<p>The protein encoded by this gene is a member of the protein tyrosine phosphatase (PTP) family. PTPs are known to be signaling molecules that regulate a variety of cellular processes including cell growth, differentiation, mitotic cycle, and oncogenic transformation. This PTP contains an extracellular region, a single transmembrane segment and two tandem intracytoplasmic catalytic domains, and thus represents a receptor-type PTP. The extracellular region of this protein is composed of three Ig-like and eight fibronectin type III-like domains. Studies of the similar genes in chicken and fly suggest the role of this PTP is in promoting neurite growth, and regulating neurons axon guidance. Multiple alternatively spliced transcript variants of this gene have been reported. A related pseudogene has been identified on chromosome 5. [provided by RefSeq, Jan 2010]</p>