

## Product datasheet for RC214166L1

### GALNT1 (NM\_020474) Human Tagged Lenti ORF Clone

#### Product data:

Product Type:	Expression Plasmids
Product Name:	GALNT1 (NM_020474) Human Tagged Lenti ORF Clone
Tag:	Myc-DDK
Symbol:	GALNT1
Synonyms:	GALNAC-T1
Mammalian Cell Selection:	None
Vector:	pLenti-C-Myc-DDK (PS100064)
E. coli Selection:	Chloramphenicol (34 ug/mL)
ORF Nucleotide Sequence:	The ORF insert of this clone is exactly the same as(RC214166).
Restriction Sites:	SgfI-MluI
Cloning Scheme:	

Cloning sites used for ORF Shuttling:



\* The last codon before the Stop codon of the ORF.

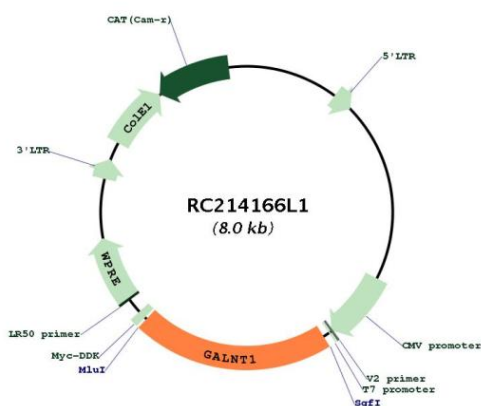
ACCN:	NM_020474
ORF Size:	1677 bp



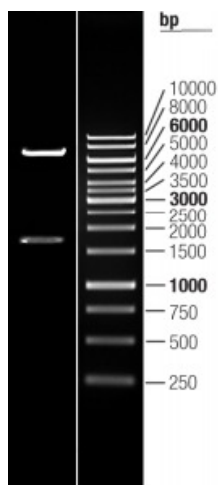
[View online >](#)

<b>OTI Disclaimer:</b>	The molecular sequence of this clone aligns with the gene accession number as a point of reference only. However, individual transcript sequences of the same gene can differ through naturally occurring variations (e.g. polymorphisms), each with its own valid existence. This clone is substantially in agreement with the reference, but a complete review of all prevailing variants is recommended prior to use. <a href="#">More info</a>
<b>OTI Annotation:</b>	This clone was engineered to express the complete ORF with an expression tag. Expression varies depending on the nature of the gene.
<b>Components:</b>	The ORF clone is ion-exchange column purified and shipped in a 2D barcoded Matrix tube containing 10ug of transfection-ready, dried plasmid DNA (reconstitute with 100 ul of water).
<b>Reconstitution Method:</b>	<ol style="list-style-type: none"><li>1. Centrifuge at 5,000xg for 5min.</li><li>2. Carefully open the tube and add 100ul of sterile water to dissolve the DNA.</li><li>3. Close the tube and incubate for 10 minutes at room temperature.</li><li>4. Briefly vortex the tube and then do a quick spin (less than 5000xg) to concentrate the liquid at the bottom.</li><li>5. Store the suspended plasmid at -20°C. The DNA is stable for at least one year from date of shipping when stored at -20°C.</li></ol>
<b>RefSeq:</b>	<a href="#">NM_020474.2</a>
<b>RefSeq Size:</b>	3778 bp
<b>RefSeq ORF:</b>	1680 bp
<b>Locus ID:</b>	2589
<b>UniProt ID:</b>	<a href="#">Q10472</a>
<b>Cytogenetics:</b>	18q12.2
<b>Domains:</b>	RICIN, Glycos_transf_2
<b>Protein Families:</b>	Secreted Protein, Transmembrane
<b>Protein Pathways:</b>	Metabolic pathways, O-Glycan biosynthesis
<b>MW:</b>	64 kDa
<b>Gene Summary:</b>	This gene encodes a member of the UDP-N-acetyl-alpha-D-galactosamine:polypeptide N-acetylgalactosaminyltransferase (GalNAc-T) family of enzymes. GalNAc-Ts initiate mucin-type O-linked glycosylation in the Golgi apparatus by catalyzing the transfer of GalNAc to serine and threonine residues on target proteins. They are characterized by an N-terminal transmembrane domain, a stem region, a luminal catalytic domain containing a GT1 motif and Gal/GalNAc transferase motif, and a C-terminal ricin/lectin-like domain. GalNAc-Ts have different, but overlapping, substrate specificities and patterns of expression. Transcript variants derived from this gene that utilize alternative polyA signals have been described in the literature. [provided by RefSeq, Jul 2008]

Product images:



Circular map for RC214166L1



Double digestion of RC214166L1 using SgfI and MluI