

Product datasheet for RC214163

Leukotriene B4 Receptor 2 (LTB4R2) (NM_019839) Human Tagged ORF Clone

Product data:

Product Type:	Expression Plasmids
Product Name:	Leukotriene B4 Receptor 2 (LTB4R2) (NM_019839) Human Tagged ORF Clone
Tag:	Myc-DDK
Symbol:	Leukotriene B4 Receptor 2
Synonyms:	BLT2; BLTR2; JULF2; KPG_004; LTB4-R 2; LTB4-R2; NOP9
Mammalian Cell Selection:	Neomycin
Vector:	pCMV6-Entry (PS100001)
E. coli Selection:	Kanamycin (25 ug/mL)
ORF Nucleotide Sequence:	>RC214163 representing NM_019839. Blue=ORF Red=Cloning site Green=Tag(s)

```
GCTCGTTTGTAGTGAACCGTCAGAATTTTGTAAACGACTCACTATAGGGCGCCGGGAATTCGTGCGACTG
GATCCGGTACCGAGGAGATCTGCCGCCGCGATCGCC
ATGGCACCTTCTCATCGGGCATCACAGGTGGGGTTTTGCCACCCTGAACGCCCTCTGTGGCGCCTT
CCACCCACCTGTAGGCCAGAAGGATGTCGGTCTGCTACCGTCCCCAGGGAACGAGACTGCTGAGC
TGGAAAGACTTCGCGGGCCACAGGCACAGCCTTCTGCTGCTGGCGGCGTCTGGGGCTGCCTGGCAAC
GGCTTCGTGGTGTGGAGCTTGGCGGGCTGGCGGCTGCACGGGGCGACCGCTGGCGGCCACGCTTGTG
CTGCACCTGGCGCTGGCCGACGGCGGGTCTGCTGCTCAGCCGCTCTTTGTGGCTTCTGACCCGG
CAGGCCTGGCCGCTGGCCAGGGGGCTGCAAGGCGGTACTACGTGTGCGCGCTCAGCATGTACGCC
AGCGTGTGCTACCCGGCTGCTCAGCCTGCAGCGTGCCTCGCAGTACCCGCCCTTCTGCGCCT
CGGCTGCGCAGCCCGCCCTGGCCCGCCGCTGCTGCTGGCGGTCTGGCTGGCCGCCCTGTTGCTGCC
GTCCCGGGCCGCTTACCGCCACCTGTGGAGGGACCGGTATGCCAGCTGTGCCACCCGTGCGCGGTC
CACGCCGCGCCACCTGAGCCTGGAGACTCTGACCGCTTTCGTGCTTCTTTGGGGTGTGCTCGGC
TGCTACAGCGTGACGCTGGCAGCGTGGGGGGCGCCGCTGGGGTCCGGGCGGCACGGGGCGGGGTG
GGCCGGTGGTGAGCGCCATCGTCTTGCCTTCGGCTTGTCTGGGCCCTACCACGCAGTCAACCTT
CTGCAGGCGGTGCGAGCGTGGCTCCACCGAAGGGCCCTGGCGAAGCTGGGCGGAGCCGGCCAGGGC
GCGCGAGCGGGAACACGGCCTTGGCCTTCTCAGTTCTAGCCTAACCCGGTCTACGTCTTACC
GCTGGAGATCTGCTGCCCGGGCAGGTCCCGTTTCTCAGCGGCTTTCGAAGGCTCTGGGGAGGCC
CGAGGGGGCGGCCGCTCTAGGGAAGGGACCATGGAGCTCCGAACTACCCCTCAGTGAAGTGGTGGGG
CAGGGCCGCGGAATGGAGACCCGGGGGTGGGATGGAGAAGGACGGTCCGGAATGGGACCTT
ACGCGTACGCGGCCGCTCGAGCAGAACTCATCTCAGAAGAGGATCTGGCAGCAAATGATATCCTGGAT
TACAAGGATGACGACGATAAGGTTTAAACGGCCGGC
```



[View online »](#)

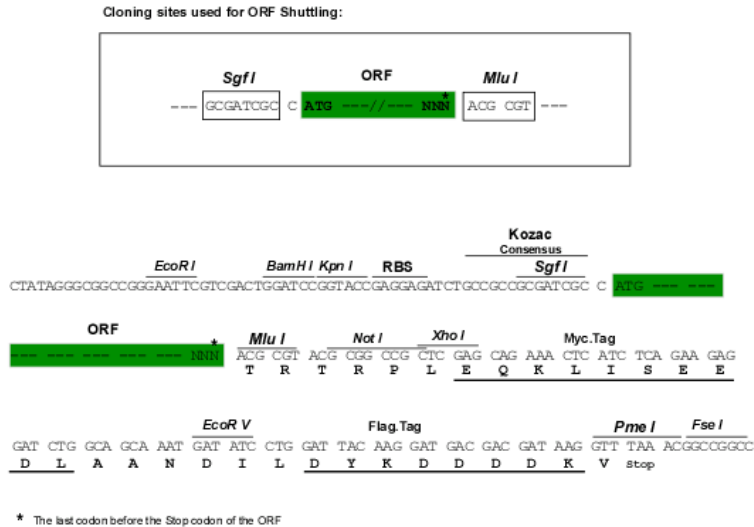
Protein Sequence: >Peptide sequence encoded by RC214163
 Blue=ORF Red=Cloning site Green=Tag(s)

MAPSHRASQVGFCTPERPLWRLPPTCRPRRMSVCYRPPGNETLLSWKTSRATGTAFLLAALLGLPGN
 GFVVWSLAGWRPARGRPLAATLVLHLALADGAVLLL TPLFVAFLTRQAWPLGQAGCKAVYYVICALSMYA
 SVLLTGLLSLQRCLAVTRPFLAPRLRSPALARRLLAVWLAALLLAVPAAVYRHLWRDRVQC LHPSPV
 HAAAHL SLETLTAFVLPFGLMLGCYSVTLARLRGARWGSGRHGARGVRLVSAIVLAFGLLWAPYHAVNL
 LQAVAALAPPEGALAKLGGAGQAARAGTTALAFFSSSVNPVLYVFTAGDLLPRAGPRFLTRLFEGSGEA
 RGGGRSREGTMELRTPQLKVVQGGRGNDPGGMEKDGPEWDL
 TRTRPLEQKLISEEDLAANDILDYKDDDDKV

Chromatograms: https://cdn.origene.com/chromatograms/mk6217_a08.zip

Restriction Sites: SgfI-MluI

Cloning Scheme:



ACCN: NM_019839

ORF Size: 1167 bp

OTI Disclaimer: The molecular sequence of this clone aligns with the gene accession number as a point of reference only. However, individual transcript sequences of the same gene can differ through naturally occurring variations (e.g. polymorphisms), each with its own valid existence. This clone is substantially in agreement with the reference, but a complete review of all prevailing variants is recommended prior to use. [More info](#)

OTI Annotation: This clone was engineered to express the complete ORF with an expression tag. Expression varies depending on the nature of the gene.

Components: The ORF clone is ion-exchange column purified and shipped in a 2D barcoded Matrix tube containing 10ug of transfection-ready, dried plasmid DNA (reconstitute with 100 ul of water).

Reconstitution Method:

1. Centrifuge at 5,000xg for 5min.
2. Carefully open the tube and add 100ul of sterile water to dissolve the DNA.
3. Close the tube and incubate for 10 minutes at room temperature.
4. Briefly vortex the tube and then do a quick spin (less than 5000xg) to concentrate the liquid at the bottom.
5. Store the suspended plasmid at -20°C. The DNA is stable for at least one year from date of shipping when stored at -20°C.

RefSeq: [NM_019839.3](#)

RefSeq Size: 2799 bp

RefSeq ORF: 1077 bp

Locus ID: 56413

UniProt ID: [Q9NPC1](#)

Cytogenetics: 14q12

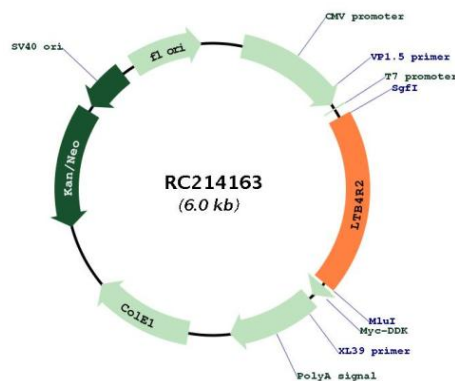
Protein Families: Druggable Genome, GPCR, Transmembrane

Protein Pathways: Calcium signaling pathway, Neuroactive ligand-receptor interaction

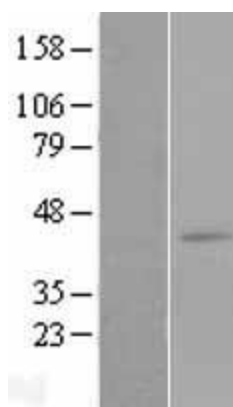
MW: 41.5 kDa

Gene Summary: Low-affinity receptor for leukotrienes including leukotriene B4. Mediates chemotaxis of granulocytes and macrophages. The response is mediated via G-proteins that activate a phosphatidylinositol-calcium second messenger system. The rank order of affinities for the leukotrienes is LTB4 > 12-epi-LTB4 > LTB5 > LTB3.[UniProtKB/Swiss-Prot Function]

Product images:



Circular map for RC214163



Western blot validation of overexpression lysate (Cat# [LY412710]) using anti-DDK antibody (Cat# [TA50011-100]). Left: Cell lysates from untransfected HEK293T cells; Right: Cell lysates from HEK293T cells transfected with RC214163 using transfection reagent MegaTran 2.0 (Cat# [TT210002]).