

Product datasheet for **RC214158**

C1RL (NM_016546) Human Tagged ORF Clone

Product data:

Product Type:	Expression Plasmids
Product Name:	C1RL (NM_016546) Human Tagged ORF Clone
Tag:	Myc-DDK
Symbol:	C1RL
Synonyms:	C1r-LP; C1RL1; C1RLP; CLSPa
Mammalian Cell Selection:	Neomycin
Vector:	pCMV6-Entry (PS100001)
E. coli Selection:	Kanamycin (25 ug/mL)



[View online »](#)

ORF Nucleotide Sequence:

>RC214158 representing NM_016546
 Red=Cloning site Blue=ORF Green=Tags(s)

TTTTGTAATACGACTCACTATAGGGCGGCCGGAATTCGTCGACTGGATCCGGTACCGAGGAGATCTGCC
 GCC**CGCATCGCC**

ATGCCTGGACCCAGAGTGTGGGGAAATATCTCTGGAGAAGCCCTCACTCCAAGGCTGTCCAGGCGCAA
 TGTGGTGGCTGCTTCTCTGGGGAGTCTCCAGGCTTGCCCAACCCGGGGCTCCGTCTCTTGCCCAAGA
 GCTACCCACAGCAGCTGACATCCCCGGGTACCCAGAGCCGTATGGCAAAGGCCAAGAGAGCAGCAGCGAC
 ATCAAGGCTCCAGAGGGCTTTGCTGTGAGGCTCGTCTTCCAGGACTTCGACCTGGAGCCGTCAGGACT
 GTGCAGGGGACTCTGTACAATCTATTCTGTCGGTTCGGATCCAAGCCAGTTCTGTGGTCAGCAAGGCTC
 CCCTCTGGGCAGGCCCTGGTCCAGAGGAGTTTGTATCCTCAGGGAGGAGTTTGCAGGCTGACCTCCGC
 ACACAGCCTTCTCGGAGAACAAGACTGCCACCTCCACAAGGGCTTCTGGCCCTACCAACCGTGG
 CTGTGAACTATAGTCAGCCCATCAGCGAGGCCAGCAGGGGCTCTGAGGCCATCAACGCACCTGGAGACAA
 CCCTGCCAAGGTCAGAACCCTGCCAGGAGCCCTATTATCAGGCCGCGCAGCAGGGGCACTCACCTGT
 GCAACCCAGGGACCTGGAAAGACAGACAGGATGGGGAGGAGTTCTTCAGTGTATGCCTGTCTGCGGAC
 GGCCAGTACCCCATTCGCCAGAATCAGACGACCCCTCGGTTCTTCCAGAGCCAAGCTGGGCAACTTCCC
 CTGGCAAGCCTTACCAGTATCCACGGCCGTGGGGCGGGGCCCTGCTGGGGACAGATGGATCCTCACT
 GCTGCCACACCATCTACCCCAAGGACAGTGTCTCTCAGGAAGAACCAGAGTGTGAATGTGTTCTTGG
 GCCACACAGCCATAGATGAGATGCTGAACTGGGAACCAACCTGTCCACCGTGTCTGTGACCCCGA
 CTACCGTCAGAATGAGTCCATAACTTTAGCGGGGACATCGCCCTCCTGGAGCTGCAGCAGCATCCCC
 CTGGGCCCCAACGTCCTCCCGTCTGTCTGCCGATAATGAGACCCTCTACCGCAGCGGCTTGTGGGCT
 ACGTCAGTGGGTTTGGCATGGAGATGGGCTGGCTAACTACTGAGCTGAAGTACTCGAGGCTGCCTGTAGC
 TCCAGGGAGGCCCTGCAACGCTGGCTCCAAAAGAGACAGAGACCCGAGGTGTTTTCTGACAAATATGTTT
 TGTGTTGGGATGAGACGCAAAGGCACAGTGTCTGCCAGGGGACAGTGGCAGCGTCTATGTGGTATGGG
 ACAATCATGCCCATCACTGGGTGCCACGGGCATTGTGTCTGGGCATAGGGTGTGGCGAAGGGTATGA
 CTTCTACACCAAGGTGCTCAGCTATGTGGACTGGATCAAGGGAGTGTGAATGGCAAGAAT

ACGCGTACGCGGCCGCTCGAGCAGAAACTCATCTCAGAAGAGGATCTGGCAGCAAATGATATCTGGATT
 ACAAGGATGACGACGATAAGGTTTAA

Protein Sequence:

>RC214158 representing NM_016546
 Red=Cloning site Green=Tags(s)

MPGPRVWGKYLWRSPHKGCPGAMWLLLLWVQLQACPTRGSVLLAQELPQQLTSPGYPEPYGKGQESSTD
 IKAPEGFVRLVFQDFDLEPSQDCAGDSVTISFVGSQPSQFCGQQGSPLGRPPGQREFVSSGRSLRLTFR
 TQPSSENKTAHLHKGFLALYQTVAVNYSQPISEASRGSEAINAPGDNPAKVQNHCEPYQAAAAGALTC
 ATPGTWKDRQDGEVLCMPVCGRPVTPIAQNQTTLGSSRAKLGTFWQAFSTIHRGGGALLGDRWILT
 AAHTIYPKDSVSLRKNQSVNVLGHTAIDEMCLKGNHPVHRVVVHPDYRQNESHNFSGDIALLELQHSIP
 LGPNVLPVCLPDNETLYRSGLLGYVSGFMEMGWLTELKYSRLPVAPREACNAWLQKRQRPEVFSNMF
 CVGDETRHSVCQGDGSGSVYVVWDNHAHHWVATGIVSWGIGCGEGYDFYTKVLSYVDWIKGMNGKN

TRTRPLEQKLISEEDLAANDILDYKDDDDKV

Chromatograms:

https://cdn.origene.com/chromatograms/mk8120_g06.zip

Restriction Sites:

Sgfl-Mlul

Cloning Scheme:

Cloning sites used for ORF Shutting:



* The last codon before the Stop codon of the ORF

ACCN: NM_016546

ORF Size: 1461 bp

OTI Disclaimer: The molecular sequence of this clone aligns with the gene accession number as a point of reference only. However, individual transcript sequences of the same gene can differ through naturally occurring variations (e.g. polymorphisms), each with its own valid existence. This clone is substantially in agreement with the reference, but a complete review of all prevailing variants is recommended prior to use. [More info](#)

OTI Annotation: This clone was engineered to express the complete ORF with an expression tag. Expression varies depending on the nature of the gene.

Components: The ORF clone is ion-exchange column purified and shipped in a 2D barcoded Matrix tube containing 10ug of transfection-ready, dried plasmid DNA (reconstitute with 100 ul of water).

Reconstitution Method:

1. Centrifuge at 5,000xg for 5min.
2. Carefully open the tube and add 100ul of sterile water to dissolve the DNA.
3. Close the tube and incubate for 10 minutes at room temperature.
4. Briefly vortex the tube and then do a quick spin (less than 5000xg) to concentrate the liquid at the bottom.
5. Store the suspended plasmid at -20°C. The DNA is stable for at least one year from date of shipping when stored at -20°C.

RefSeq: [NM_016546.4](#)
RefSeq Size: 3398 bp

RefSeq ORF: 1464 bp

Locus ID: 51279

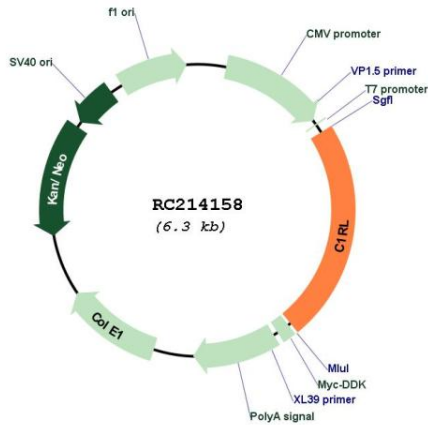
UniProt ID: [Q9NZP8](#)
Cytogenetics: 12p13.31

Protein Families: Druggable Genome, Protease

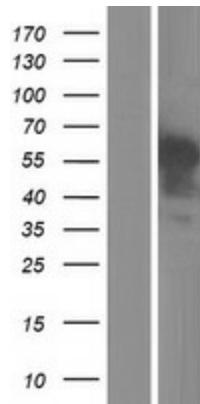
MW: 53.9 kDa

Gene Summary: Mediates the proteolytic cleavage of HP/haptoglobin in the endoplasmic reticulum. [UniProtKB/Swiss-Prot Function]

Product images:



Circular map for RC214158



Western blot validation of overexpression lysate (Cat# [LY402565]) using anti-DDK antibody (Cat# [TA50011-100]). Left: Cell lysates from untransfected HEK293T cells; Right: Cell lysates from HEK293T cells transfected with RC214158 using transfection reagent MegaTran 2.0 (Cat# [TT210002]).