

Product datasheet for **RC214155**

CCBL2 (KYAT3) (NM_001008661) Human Tagged ORF Clone

Product data:

Product Type:	Expression Plasmids
Product Name:	CCBL2 (KYAT3) (NM_001008661) Human Tagged ORF Clone
Tag:	Myc-DDK
Symbol:	CCBL2
Synonyms:	CCBL2; KAT3; KATIII
Mammalian Cell Selection:	Neomycin
Vector:	pCMV6-Entry (PS100001)
E. coli Selection:	Kanamycin (25 ug/mL)



[View online »](#)

ORF Nucleotide Sequence:

>RC214155 representing NM_001008661
 Red=Cloning site Blue=ORF Green=Tags(s)

TTTTGTAATACGACTCACTATAGGGCGGCCGGAATTCGTCGACTGGATCCGGTACCGAGGAGATCTGCC
 GCC**CGCATCGCC**

ATGTTTTTGGCCAGAGGAGCCTCTGCTCTTAGCGGTAGAGCAAATTCCTGAAGACAATTTCTCTT
 CAAAATCCTCGATTCTACTTCTGCTAAAATGTCAGTCAAATTCACAAATGCAAACGATTGAAGG
 ACTTGATAGTAATGTGTGGATTGAATTTACCAAATTTGGCTGCAGACCCTTCTGTTGTGAATCTTGCCAA
 GGCTTTCCAGATATATCCCTCTACATATGTAAGAAGAATTATCAAAGATTGCAGCAATCGATAGCC
 TGAATCAGTATACAGGAGCTTTGGCCATCCATCACTTGTGAAAGCTCTGTCTATCTGTATGAAAAGCT
 TTATCAAAGCAAATGATTCAAATAAAGAAATCCTTGTGACAGTAGGAGCATATGGATCTCTTTTAAAC
 ACCATTCAAGCATTAAATGATGAGGGAGATGAAGTCATACTAATAGTGCCTTCTATGACTGCTATGAGC
 CCATGGTGAGAATGGCTGGAGCAACACCTGTTTTTATCCCTGAGATCTAAACCTGTTTATGAAAAAG
 ATGGTCTAGTTCGACTGGACATTAGATCCTCAAGAACTGAAAGTAAATTTAATCCAAAACCAAAGCT
 ATTATACTAAATACTCCACATAACCCACTTGGCAAGGTGTATAACAGAGAGGAAGTGAAGTAAATGCTG
 ACCTTTGCATCAAATATGACACACTCTGCATCAGCGATGAGGTTTATGAATGGCTTGTATATTCTGGAAA
 TAAGCACTTAAAAATAGCTACTTTTCCAGGTATGTGGGAGAGAACAATAACAATAGGAAGTCTGGAAA
 ACTTTCAGTGAACCTGGCTGGAAGCTTGGCTGGTCCATTGGTCCAAATCATTGATAAAACATTTACAGA
 CAGTTCAACAAAACAGATTTATACTTGTGCAACTCCTTACAGGAAGCCTTGGCTCAAGCTTCTGGAT
 TGACATCAAGCGCATGGATGACCAGAAATGTTACTTTAATTCTTGGCCAAAAGAGTTAGAAGTAAAAAGA
 GATCGGATGGTACGTTTACTTGAAGTGTGGCCTAAAACCCATAGTTCCCTGATGGAGGATACTTCATCA
 TCGCTGATGTCTTTGCTAGATCCAGACCTCTGATATGAAGAATAATGAGCCTTATGACTATAAGTT
 TGTGAAATGGATGACTAAACATAAGAACTATCAGCCATCCCGTTTCAGCATTCTGTAACCTCAGAGACT
 AAATCACAGTTTGAAGTTTGTGCGTTTTTGGCTTCAATAAAAAGACAGCACACTGGATGCTGCTGAAG
 AAATCATCAAGGCATGGAGTGTACAGAAGTCT

ACGCGTACGCGGCCGCTCGAGCAGAACTCATCTCAGAAGAGGATCTGGCAGCAAATGATATCCTGGATT
 ACAAGGATGACGACGATAAGGTTTAA

Protein Sequence:

>RC214155 representing NM_001008661
 Red=Cloning site Green=Tags(s)

MFLAQRSLCSLSGRAKFLKTISSKILGFSTSAKMSLKFNTAKRIEGLDSNVWIEFTKLAADPSVNLGQ
 GFPDISPPTYVKEELSKIAAIDSLNQYTRGFHPSLVKALSYL YEKLYQKQIDSNKEILVTGAYGSLFN
 TIQALIDEGDEVILIVPFYDCYEPVMRMAGATPVFIPLRSKPVYGKRWSSDWTLDPQELESKFNSKTKA
 IILNTPHNPLGKYYNREELQVIADLCIKYDTLCISDEVYEWLVYSGNKHLKIATFPGMWERTITIGSAGK
 TFSVTGWKLGWSIGPNHLIKHLQTVQNTIYTCAIPLQEAALQAFWIDIKRMDDPECYFNLPKELEVKR
 DRMVRLLESVGLKPIVPDGGYFIIADVSLLDPLSDMKNNPEYDYKFKWMTKHKKLSAIPVSAFCNSET
 KSQFEKFRVRCFIKKDSTLDAEEI IKAWSVQKS

TRTRPLEQKLISEEDLAANDILDYKDDDDKV

Chromatograms:

https://cdn.origene.com/chromatograms/mk8029_c06.zip

Restriction Sites:

Sgfl-Mlul

Cloning Scheme:


ACCN: NM_001008661

ORF Size: 1362 bp

OTI Disclaimer: The molecular sequence of this clone aligns with the gene accession number as a point of reference only. However, individual transcript sequences of the same gene can differ through naturally occurring variations (e.g. polymorphisms), each with its own valid existence. This clone is substantially in agreement with the reference, but a complete review of all prevailing variants is recommended prior to use. [More info](#)

OTI Annotation: This clone was engineered to express the complete ORF with an expression tag. Expression varies depending on the nature of the gene.

Components: The ORF clone is ion-exchange column purified and shipped in a 2D barcoded Matrix tube containing 10ug of transfection-ready, dried plasmid DNA (reconstitute with 100 ul of water).

Reconstitution Method:

1. Centrifuge at 5,000xg for 5min.
2. Carefully open the tube and add 100ul of sterile water to dissolve the DNA.
3. Close the tube and incubate for 10 minutes at room temperature.
4. Briefly vortex the tube and then do a quick spin (less than 5000xg) to concentrate the liquid at the bottom.
5. Store the suspended plasmid at -20°C. The DNA is stable for at least one year from date of shipping when stored at -20°C.

RefSeq: [NM_001008661.3](#)

RefSeq Size: 2038 bp

RefSeq ORF: 1365 bp

Locus ID: 56267

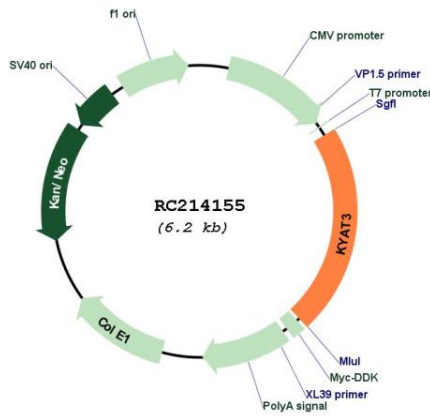
UniProt ID: [Q6YP21](#)

Cytogenetics: 1p22.2

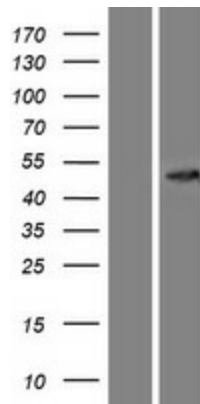
MW: 51.2 kDa

Gene Summary: This gene encodes an aminotransferase that transaminates kynurenine to form kynurenic acid, which is a metabolite of tryptophan. Multiple alternatively spliced transcript variants that encode different proteins have been described for this gene. This gene shares 5' exon structure with the RNA binding motif protein, X-linked-like 1 locus on chromosome 1, but the coding sequences are non-overlapping. [provided by RefSeq, Mar 2017]

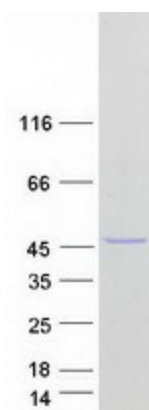
Product images:



Circular map for RC214155



Western blot validation of overexpression lysate (Cat# [LY423344]) using anti-DDK antibody (Cat# [TA50011-100]). Left: Cell lysates from untransfected HEK293T cells; Right: Cell lysates from HEK293T cells transfected with RC214155 using transfection reagent MegaTran 2.0 (Cat# [TT210002]).



Coomassie blue staining of purified KYAT3 protein (Cat# [TP314155]). The protein was produced from HEK293T cells transfected with KYAT3 cDNA clone (Cat# RC214155) using MegaTran 2.0 (Cat# [TT210002]).