

Product datasheet for RC214154

SorLA (SORL1) (NM_003105) Human Tagged ORF Clone

Product data:

Product Type:	Expression Plasmids
Product Name:	SorLA (SORL1) (NM_003105) Human Tagged ORF Clone
Tag:	Myc-DDK
Symbol:	SorLA
Synonyms:	C11orf32; gp250; LR11; LRP9; SORLA; SorLA-1
Mammalian Cell Selection:	Neomycin
Vector:	pCMV6-Entry (PS100001)
E. coli Selection:	Kanamycin (25 ug/mL)
ORF Nucleotide Sequence:	>RC214154 representing NM_003105 Red=Cloning site Blue=ORF Green=Tags(s)

TTTTGTAATACGACTCACTATAGGGCGGCCGGAATTCGTCGACTGGATCCGGTACCGAGGAGATCTGCC
GCC**CGATCGCC**

ATGGCGACACGGAGCAGCAGGAGGGAGTCGCGACTCCCGTTCCTATTCACCCTGGTCGCACTGCTGCCGC
CCGGAGCTCTCTGCGAAGTCTGGACGCAGAGGCTGCACGGCGGCAGCGCCCTTGCCCCAGGACCGGG
CTTCTCGTGGTGCAGGGCGACCCGCGGAGCTGCGGCTGTGGCGCGCGGGGATGCCAGGGGGCGAGC
CGCGCGGACGAGAAGCCGCTCCGGAGGAAACGGAGCGCTGCCCTGCAGCCGAGCCCATCAAGGTGTACG
GACAGGTTAGTCTGAATGATTCCACAATCAGATGGTGGTGCCTGGGCTGGAGAGAAAAGCAACGTGAT
CGTGGCCTTGGCCGAGATAGCCTGGCATTGGCGAGGCCAAGAGCAGTGTGTACGTCTTACGAC
TATGAAAATCATTCAAGAAAATTTAGACAAGTTAACTTTGGCTTGGGAAATAGGAGTGAAGCTGTTA
TCGCCCAGTTCTACCACAGCCCTGCGGACAACAAGCGGTACATCTTTCAGACGCTTATGCCAGTACCT
CTGGATCACGTTTGACTTCTGCAACTCTTCAAGGCTTTTCCATCCCATTTTCGGGCAGCTGATCTCCTC
CTACACAGTAAGGCTCCAACCTTCTCTGGGCTTTGACAGTCCCACCCCAACAAGCAGCTGTGGAAGT
CAGATGACTTTGGCCAGACCTGGATCATGATTCAAGAACATGTCAAGTCTTTTCTTGGGAATTGATCC
CTATGACAAACCAATACCATCTACATTGAACGACATGAACCTCTGGCTACTCCACTGTCTTCCGAAGT
ACAGATTTCTCCAGTCCCGGAAAACCGGAAGTATCCTTGAGGAAGTGAAGATTTTCAGCTTCGGG
ACAAGTACATGTTTGTACAAAAGTGGTGCATCTCTTGGCAGTGAACAGCAGTCTTCTGTCCAGCTCTG
GGTCTCCTTTGGCCGGAAGCCCATGAGAGCAGCCAGTTTGTCAAGACATCCTATTAATGAATATTAC
ATCGCAGATGCCTCCGAGGACAGGTGTTTGTGTGTGTCAGCCACAGTAACAACCGCACCAATTTATACA
TCTCAGAGGCAGAGGGGCTGAAGTTCTCCCTGTCTTGGAGAACGTGCTCTATTACAGCCAGGAGGGGC
CGGCAGTGACACCTTGGTGAAGTATTTGCAAATGAACCATTTGCTGACTTCCACCGAGTGAAGGATTG
CAAGGAGTCTACATTGCTACTCTGATTAATGGTTCTATGAATGAGGAGAACATGAGATCGGTCATCACCT
TTGACAAAGGGGAACCTGGGAGTTTCTCAGGCTCCAGCCTTCCAGGGATATGGAGAGAAAATCAATTG
TGAGCTTTCCAGGGCTTCCCTTCATCTGGCTCAGCGCTCAGTCAGCTCCTCAACCTCCAGTCCGG



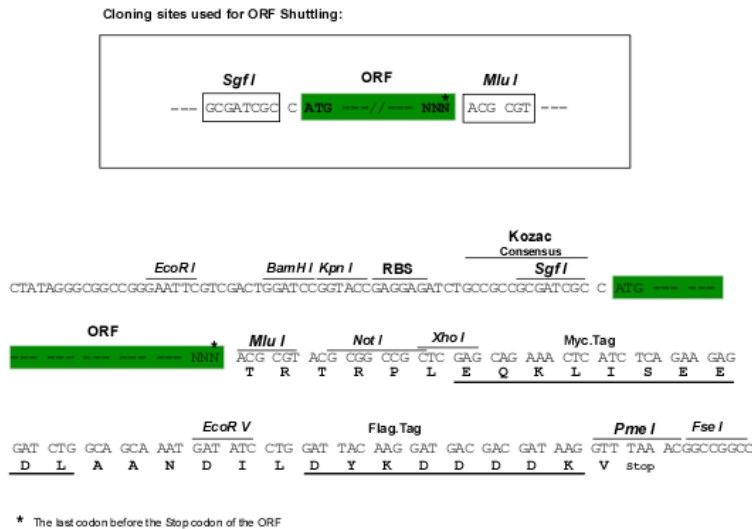
[View online >](#)

AGAATGCCCATCCTGTCCAAGGAGTCGGCTCCAGGCCTCATCATCGCCACTGGCTCAGTGGGAAAGAACT
 TGGCTAGCAAGACAAACGTGTACATCTCTAGCAGTGTGGAGCCAGGTGGCGAGAGGCACCTTCTGGACC
 TCACTACTACACATGGGGAGACCACGGCGGAATCATCACGGCCATTGCCAGGGCATGGAACCAACGAG
 CTAATAACAGTACCAATGAAGGGGAGACCTGGAAAACATTATCTTCTCTGAGAAGCCAGTGTTTGTGT
 ATGGCCTCCTCACAGAACCTGGGGAGAAGAGCACTGTCTTACCATCTTTGGCTCGAACAAAGAGAATGT
 CCACAGCTGGCTGATCCTCCAGGTCAATGCCACGGATGCCTTGGGAGTTCCTGCACAGAGAAATGACTAC
 AAGCTGTGGTACCATCTGATGAGCGGGGAATGAGTGTGGTGGGACACAAGACTGTTTTCAAACGGC
 GGACCCCATGCCACATGCTTCAATGGAGAGGACTTTGACAGGCCGGTGGTCTGTCCTCAACTGCTCTG
 CACCCGGGAGGACTATGAGTGTGACTTCGGTTTCAAGATGAGTGAAGATTTGTCATTAGAGGTTTGTGT
 CCAGATCCGGAATTTTCTGGAAAGTCATACTCCCTCCTGTGCCTTGCCTGTGGTTTCTACTTACAGGA
 GAACGAGAGGCTACCGGAAGATTTCTGGGGACACTTGTAGCGGAGGAGATGTTGAAGCGGACTGGAAGG
 AGAGCTGGTCCCCTGTCCCCTGGCAGAAGAGAACGAGTTCATTCTGTATGCTGTGAGGAAATCCATCTAC
 CGCTATGACCTGGCCTCGGGAGCCACCGAGCAGTTGCCTCTACCGGGCTACGGGCAGCAGTGGCCCTGG
 ACTTTGACTATGAGCACAACGTGTGTATTGGTCCGACCTGGCCTTGACGTCATCCAGCGCCTCTGTTT
 GAATGGAAGCACAGGGCAAGAGGTGATCATCAATTCTGGCCTGGAGACAGTAGAAGCTTTGGCTTTTGAA
 CCCTCAGCCAGCTGCTTACTGGGTAGATGCAGGCTTCAAAAAGATTGAGGTAGCTAATCCAGATGGCG
 ACTTCCGACTCACAATCGTCAATTCCTCTGTGCTTGTATCGTCCCAGGGCTCTGGTCTCTGCCCAAGA
 GGGGTGATGTTCTGGACAGACTGGGGAGACCTGAAGCCTGGGATTTATCGGAGCAATATGGATGTTCT
 GCTGCCTATCACCTGGTGTCTGAGGATGTGAAGTGGCCAATGGCATCTCTGTGGACGACCAGTGGATTT
 ACTGGACGGATGCCTACCTGGAGTGCATAGAGCGGATCACGTTACAGTGGCCAGCAGCGCTCTGTCTTCT
 GGACAACCTCCCACCCCTATGCCATTGCTGTCTTTAAGAATGAAATCTACTGGGATGACTGGTTCACAG
 CTCAGCATATCCGAGCTTCAAATACAGTGGTCCCAGATGGAGATTCTGGCAAACAGCTCACGGGGC
 TCATGGACATGAAGATTTTCTACAAGGGGAAGAACAACACTGGAAGCAATGCCTGTGTGCCACGGCCTG
 CCTGTGTGCTGCCCAAGGCCAACACAGTAGAAGCTGCAGGTGTCAGAGGATGTGTCCAGCAGTGTG
 CTTCCATCAGGGGACCTGATGTGTGACTGCCCTCAGGGCTATCAGCTCAAGAACAATACCTGTGTCAAAG
 AAGAGAACACCTGTCTTCGCAACCAAGTATCGTGCAGCAACGGAACTGTATCAACAGCATTGTTGGTGTG
 TGACTTTGACAACGACTGTGGAGACATGAGCGATGAGAGAACTGCCCTACCACCATCTGTGACCTGGAC
 ACCCAGTTTCTGTGCCAGGAGTCTGGGACTTGTATCCCACTGTCTATAAATGTGACCTTGGAGTACT
 GTGGAGACAACAGTGTGAAAGTATTGTGAAATGCACCAAGTCCCGGAGTACAGGATCAACTGCAGTTC
 CGGCATGTGCATCCGCTCCTCTGGGTATGTGACGGGGACAACGACTGCAGGGACTGGTCTGATGAAGCC
 AACTGTACCGCATCTATCACACCTGTGAGGCCTCCAACCTCCAGTGGCAAACGGGCACATGCCCTCC
 AGCGGTGGGCGTGTGACGGGGATACGGACTGCCAGGATGGTCCGATGAGGATCCAGTCAACTGTGAGAA
 GAAGTGAATGGATTCCGCTGCCAAATGGCACTTGCATCCCATCCAGCAAAACATTGTGATGGTCTGCGT
 GATTGCTCTGATGGCTCCGATGAACAGCACTGCGAGCCCTCTGTACGCACTTTCATGGACTTTGTGTGTA
 AGAACCAGCAGCAGTGCCTGTTCCACTCCATGGTCTGTGACGGAATCATCCAGTGGCCGACGGGTCGGA
 TGAGGATGCGGCGTTTGCAGGATGCTCCCAAGATCCTGAGTCCACAAGGATGTGATGAGTTCGGTTTC
 CAGTGTGAGAATGGAGTGTGCATCAGTTGATTGGAAGTGCACGGGATGGATGATTGCGGCGATTATT
 CTGATGAAGCCAACTGCGAAAACCCACAGAAGCCCCAACTGCTCCCGTACTTCCAGTTCGGTGTGA
 GAATGGCCACTGCATCCCAACAGATGGAAATGTGACAGGGAGAACGACTGTGGGACTGGTCTGATGAG
 AAGGATTGTGGAGATTACATATTTCTCCCTTCTCGACTCCTGGGCCCTCCACGTGTCTGCCAATTACT
 ACCGCTGCAGCAGTGGGACCTGCGTGTGACACCTGGGTGTGCGACGGGTACCGAGATTGTGCAGATGG
 CTCTGACGAGGAAGCCTGCCCTTGTGCAAACGTCCTGCTGCCTCCACTCCCACCAACTTGGGCGA
 TGTGACCGATTTGAGTTCGAATGCCACCAACCGAAGACGTGATTCCCAACTGGAAGCGCTGTGACGGCC
 ACCAAGATTGCCAGGATGGCCGGGACGAGGCCAATTGCCACACACAGCACCTTACTTGCATGAGCAG
 GGAGTTCAGTGCAGGACGGGGAGGCTGCATTGTGCTCTCGGAGCGCTGCGACGGCTTCTGGACTGC
 TCGGACGAGAGCGATGAAAAGCCCTGCAGTGTGAGTTGACTGTGTACAAAGTACAGAATCTTCAAGTGA
 CAGCTGACTTCTCTGGGATGTGACTTTGACCTGGATGAGGCCAAAAAAATGCCCTCTGCTTCTGTGT
 ATATAATGTCTACTACAGGGTGGTTGGAGAGAGCATATGGAAGACTCTGGAGACCACAGCAATAAGACA
 AACACTGTATTAAGTCTTGAACAGATACCACGTATCAGGTTAAAGTACAGGTTCAAGTGTCTCAGCA
 AGGCACACAACCAATGACTTTGTGACCTGAGGACCCAGAGGGATTGCCAGATGCCCTCGAAATCT
 CCAGCTGTCACTCCCAGGGAAGCAGAAGGTGTGATTGTAGGCCACTGGGCTCCTCCATCCACACCCAT
 GGCCTCATCCGTGAGTACATTGTAGAATACAGCAGGAGTGGTTCAAGATGTGGGCTCCAGAGGGCTG

CTAGTAACTTTACAGAAATCAAGAACTTATTGGTCAACACTCTATACACCGTCAGAGTGGCTGCGGTGAC
TAGTCGTGGAATAGGAACTGGAGCGATTCTAAATCCATTACCACCATAAAAGGAAAAGTGATCCCACCA
CCAGATATCCACATTGACAGCTATGGTGAAAATTATCTAAGCTTCACCCTGACCATGGAGAGTGATATCA
AGGTGAATGGCTATGTGGTGAACCTTTTCTGGGCATTTGACACCCACAAGCAAGAGAGGAGAAGCTTTGAA
CTTCCGAGGAAGCATATTGTCACACAAAGTTGGCAATCTGACAGCTCATAACCTATGAGATTTCTGCC
TGGGCCAAGACTGACTTGGGGGATAGCCCTCTGGCATTGAGCATGTTATGACCAGAGGGGTTCCGCCAC
CTGCACCTAGCCTCAAGGCCAAAGCCATCAACCAGACTGCAGTGGAAATGTACCTGGACCGGCCCCGGAA
TGTGGTTTATGGTATTTTCTATGCCACGTCCTTTCTTGACCTCTATCGCAACCCGAAGAGCTTGACTACT
TCACTCCACAACAAGACGGTCATTGTGAGTAAGGATGAGCAGTATTTGTTTCTGGTCCGTGTAGTGGTAC
CCTACCAGGGGCCATCCTCTGACTACGTTGTAGTGAAGATGATCCCGGACAGCAGGCTTCCACCCCGTCA
CCTGCATGTGGTTCATACGGGCAAAACCTCCGTGGTCAACAAGTGGGAATCACCGTATGACTCTCCTGAC
CAGGACTTGTGTATGCAATTGCAGTCAAAGATCTCATAAGAAAGACTGACAGGAGCTACAAAGTAAAT
CCCGTAACAGCACTGTGGAATACACCCTTAACAAGTTGGAGCCTGGCGGAAATACCACATCATTGTCCA
ACTGGGGAACATGAGCAAAGATTCCAGCATAAAAATTACCACAGTTTCATTATCAGCACCTGATGCCTTA
AAAATCATAACAGAAAATGATCATGTTCTCTGTTTTGGAAAAGCCTGGCTTTAAAGGAAAAGCATTTTA
ATGAAAGCAGGGCTATGAGATACACATGTTTGATAGTGCCATGAATATCACAGCTTACCTAGGGAATAC
TACTGACAATTTCTTTAAAATTTCCAACCTGAAGATGGGTGATAATTACAGTTCACCGTCCAAGCAAGA
TGCCTTTTTGGCAACCAGATCTGTGGGGAGCCTGCCATCCTGCTGTACGATGAGCTGGGGTCTGGTGAG
ATGCATCTGCAACGCAGGCTGCCAGATCTACGGATGTTGCTGCTGTGGTGGTGCCCATCTTATTCCTGAT
ACTGCTGAGCCTGGGGTGGGGTTGCCATCCTGTACACGAAGCACCGGAGGCTGCAGAGCAGCTTACC
GCCTTCGCCAACAGCCACTACAGCTCCAGGCTGGGGTCCGCAATCTTCTCCTCTGGGGATGACCTGGGGG
AAGATGATGAAGATGCCCTATGATAACTGGATTTTCAGATGACGTCCCATGGTGATAGCC

ACGCGTACGCGGCGCTCGAGCAGAACTCATCTCAGAAGAGGATCTGGCAGCAAATGATATCCTGGATT
ACAAGGATGACGACGATAAGGTTTAA

Cloning Scheme:



ACCN: NM_003105

ORF Size: 6642 bp

OTI Disclaimer: Due to the inherent nature of this plasmid, standard methods to replicate additional amounts of DNA in E. coli are highly likely to result in mutations and/or rearrangements. Therefore, OriGene does not guarantee the capability to replicate this plasmid DNA. Additional amounts of DNA can be purchased from OriGene with batch-specific, full-sequence verification at a reduced cost. Please contact our customer care team at custsupport@origene.com or by calling 301.340.3188 option 3 for pricing and delivery.

The molecular sequence of this clone aligns with the gene accession number as a point of reference only. However, individual transcript sequences of the same gene can differ through naturally occurring variations (e.g. polymorphisms), each with its own valid existence. This clone is substantially in agreement with the reference, but a complete review of all prevailing variants is recommended prior to use. [More info](#)

OTI Annotation: This clone was engineered to express the complete ORF with an expression tag. Expression varies depending on the nature of the gene.

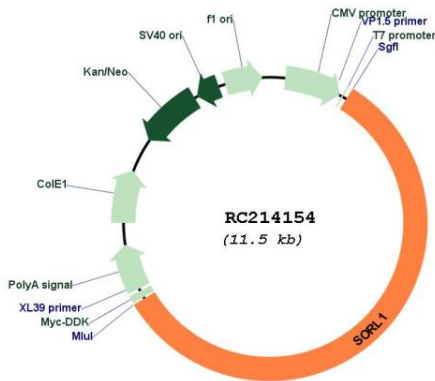
Components: The ORF clone is ion-exchange column purified and shipped in a 2D barcoded Matrix tube containing 10ug of transfection-ready, dried plasmid DNA (reconstitute with 100 ul of water).

- Reconstitution Method:
1. Centrifuge at 5,000xg for 5min.
 2. Carefully open the tube and add 100ul of sterile water to dissolve the DNA.
 3. Close the tube and incubate for 10 minutes at room temperature.
 4. Briefly vortex the tube and then do a quick spin (less than 5000xg) to concentrate the liquid at the bottom.
 5. Store the suspended plasmid at -20°C. The DNA is stable for at least one year from date of shipping when stored at -20°C.

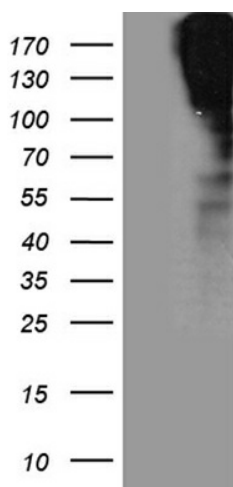
RefSeq: [NM_003105.6](#)
RefSeq Size: 6906 bp
RefSeq ORF: 6645 bp
Locus ID: 6653
UniProt ID: [Q92673](#)
Cytogenetics: 11q24.1
Domains: ldl_recept_b, ldl_recept_a, BNR, FN3, VPS10
Protein Families: Druggable Genome, Transmembrane
MW: 248.44 kDa

Gene Summary: This gene encodes a mosaic protein that belongs to at least two families: the vacuolar protein sorting 10 (VPS10) domain-containing receptor family, and the low density lipoprotein receptor (LDLR) family. The encoded protein also contains fibronectin type III repeats and an epidermal growth factor repeat. The encoded preproprotein is proteolytically processed to generate the mature receptor, which likely plays roles in endocytosis and sorting. Mutations in this gene may be associated with Alzheimer's disease. [provided by RefSeq, Feb 2016]

Product images:



Circular map for RC214154



HEK293T cells were transfected with the pCMV6-ENTRY control (Cat# [PS100001], Left lane) or pCMV6-ENTRY SORL1 (Cat# RC214154, Right lane) cDNA for 48 hrs and lysed. Equivalent amounts of cell lysates (5 ug per lane) were separated by SDS-PAGE and immunoblotted with anti-SORL1 (Cat# [TA811229])(1:2000).