

Product datasheet for RC214148

TMEM194A (NEMP1) (NM_015257) Human Tagged ORF Clone

Product data:

Product Type:	Expression Plasmids
Product Name:	TMEM194A (NEMP1) (NM_015257) Human Tagged ORF Clone
Tag:	Myc-DDK
Symbol:	TMEM194A
Synonyms:	TMEM194; TMEM194A
Mammalian Cell Selection:	Neomycin
Vector:	pCMV6-Entry (PS100001)
E. coli Selection:	Kanamycin (25 ug/mL)
ORF Nucleotide Sequence:	>RC214148 ORF sequence Red=Cloning site Blue=ORF Green=Tags(s)

TTTTGTAATACGACTCACTATAGGGCGGCCGGAATTCGTCGACTGGATCCGGTACCGAGGAGATCTGCCGCCGCGATCGCC

ATGGCGGGAGGAATGAAAGTGCGGTCTCGCCGGCAGTTGGTCCCAGGCTGGGGCTCGGGAGTCGGGG
GCGGTGGGACAGTGGGCTACTCTTGATCCTCTCCGGCTGCTTGGTCTACGGCACAGCTGAAACTGATGT
AAATGTGGTCATGCTTCAGGAATCCCAAGTTTGTGAAAAGCGTCCAGCAACAATTCTGTTACACAAAT
GTGCTTATCCAAAATGGCATGATATATGGACACGGATACAGATCCGAGTAAATAGTTCCAGATTGGTTC
GAGTCACCCAGGTGGAGAATGAGGAGAACTGAAGGAGCTAGAGCAAAGTCAAATTTTCTACTACTCTAC
TGGGATGACTGTGGGAATTGTGGCCTCTCTGCTAATCATTTTTATACTATCTAAGTTTATGCCTAAG
AAAAGTCCATTTACGTCATCCTGGTGGGAGGCTGGTCTTTTTCTCTGTACCTCATTCAACTAGTTTTTA
AAAATTTACAAGAGATCTGGAGGTGTTACTGGCAGTATCTTTAAGTTATGTCCTCACAGTTGGATTTCAT
GAGTTTTGCGATATGTTACAAGTATGGGCCCTGGAGAATGAACGAAGTATCAACCTGCTGACCTGGACC
TTGCAGCTGATGGGCTGTGTTTCATGTATTCTGGCATCCAGATACCACATATTGCCCTTGCCATTATCA
TCATTGCTCTTTGTAATAAGAACCTGGAACACCCTATTCAGTGGCTGTACATCACCTGCAGAAAGGTGTG
TAAGGGAGCAGAAAAGCCTGTCCCCCTCGTCTCTGACAGAAGAAGAATATCGGATACAAGGAGAGGTA
GAAACCCGAAAGGCTTTAGAGGAGCTCCGAGAATTTTGTAAAGTCCAGACTGCTGCTTGGAAAGACTG
TTTCTCGAATCCAGTCTCAAAAAGATTTGCTGACTTTGTGGAAGGCTCTTCCACCTCACGCCAAATGA
AGTTTCTGTCCATGAGCAGGAGTATGGATTAGGGAGCATTATTGCCAGGATGAAATCTATGAGGAAGCA
TCCTCTGAGGAGGAGGACTCATATTCTCGGTGCTCTGCTATCACACAGAACAACCTTTCTAACC

ACGCGTACGCGGCCGCTCGAGCAGAACTCATCTCAGAAGAGGATCTGGCAGCAATGATATCCTGGATT
ACAAGGATGACGACGATAAGGTTTAA



[View online »](#)

Protein Sequence: >RC214148 protein sequence
Red=Cloning site Green=Tags(s)

MAGGMKVAVSPAVGPGPWGSGVGGGTVRLLLILSGCLVYGTAEVDVNVMLQESQVCEKRASQQFCYTN
 VLIPKWHDIWTRIQIRVNSSRLVRVTQVENEKLELEQSQIFYYSTGMTVGIVASLLIIIFILSKFMPK
 KSPIYVILVGGWSFSLYLIQLVFNKLEIWRWCYQYLLSYVLTVGFMSFVAVCYKYGLEPNERINLLTWT
 LQLMGLCFMYSGIQIPHIALAIIIIALCTKNLEHPIQWL YITCRKVCKGAEKPVPPRLLTEEEYRIQGEV
 ETRKALEELREFCNSPDCSAWKTVSRIQSPKRFADFVEGSSHLTPNEVSVHEQEYGLGSIIAQDEIYEEA
 SSEEDSYSRCPAITQNNFLT

TRTRPLEQKLISEEDLAANDILDYKDDDDKV

Chromatograms: https://cdn.origene.com/chromatograms/mk6464_d01.zip

Restriction Sites: SgfI-MluI

Cloning Scheme:



* The last codon before the Stop codon of the ORF

ACCN: NM_015257

ORF Size: 1113 bp

OTI Disclaimer: The molecular sequence of this clone aligns with the gene accession number as a point of reference only. However, individual transcript sequences of the same gene can differ through naturally occurring variations (e.g. polymorphisms), each with its own valid existence. This clone is substantially in agreement with the reference, but a complete review of all prevailing variants is recommended prior to use. [More info](#)

OTI Annotation: This clone was engineered to express the complete ORF with an expression tag. Expression varies depending on the nature of the gene.

Components: The ORF clone is ion-exchange column purified and shipped in a 2D barcoded Matrix tube containing 10ug of transfection-ready, dried plasmid DNA (reconstitute with 100 ul of water).

Reconstitution Method:

1. Centrifuge at 5,000xg for 5min.
2. Carefully open the tube and add 100ul of sterile water to dissolve the DNA.
3. Close the tube and incubate for 10 minutes at room temperature.
4. Briefly vortex the tube and then do a quick spin (less than 5000xg) to concentrate the liquid at the bottom.
5. Store the suspended plasmid at -20°C. The DNA is stable for at least one year from date of shipping when stored at -20°C.

RefSeq: [NM_015257.3](#)

RefSeq Size: 5413 bp

RefSeq ORF: 1116 bp

Locus ID: 23306

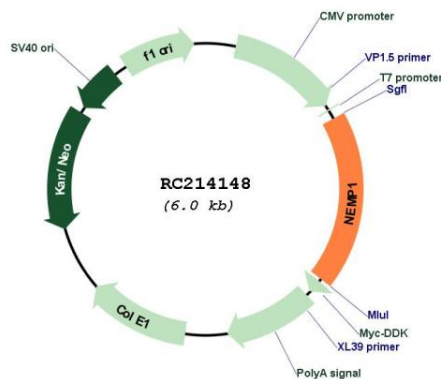
UniProt ID: [O14524](#)

Cytogenetics: 12q13.3

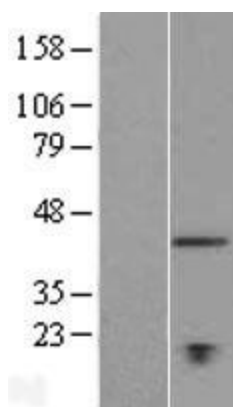
Protein Families: Transmembrane

MW: 42 kDa

Product images:



Circular map for RC214148



Western blot validation of overexpression lysate (Cat# [LY414684]) using anti-DDK antibody (Cat# [TA50011-100]). Left: Cell lysates from untransfected HEK293T cells; Right: Cell lysates from HEK293T cells transfected with RC214148 using transfection reagent MegaTran 2.0 (Cat# [TT210002]).