

## Product datasheet for **RC214139**

### **TMEM184C (NM\_018241) Human Tagged ORF Clone**

#### **Product data:**

Product Type:	Expression Plasmids
Product Name:	TMEM184C (NM_018241) Human Tagged ORF Clone
Tag:	Myc-DDK
Symbol:	TMEM184C
Synonyms:	TMEM34
Mammalian Cell Selection:	Neomycin
Vector:	pCMV6-Entry (PS100001)
E. coli Selection:	Kanamycin (25 ug/mL)



[View online »](#)

ORF Nucleotide  
Sequence:

>RC214139 representing NM\_018241  
Red=Cloning site Blue=ORF Green=Tags(s)

TTTTGTAATACGACTCACTATAGGGCGGCCGGAATTCGTCGACTGGATCCGGTACCGAGGAGATCTGCC  
GCCGCGATCGCC

ATGCCTTGCACCTGTACCTGGAGAACTGGAGACAGTGGATTTCGACCTTTAGTAGCGGTCATCTACCTGG  
TGCAATAGTGGTTGCGGTTCCCTATGCGTGTGGGAATTACAGAACTGGAGGTTGGAATACACACCAA  
GGCTTGGTTTATTGCTGGAATCTTTTTGCTGTTGACTATTCCTATATCACTGTGGGTGATATTGCAACAC  
TTAGTGCATTATACACAACCTGAACTACAAAACCAATAAAGGATTCTTTGGATGGTACCTATTTACA  
GTTTAGATAGTTGGATAGCTTTGAAATATCCCGAATTGCAATATATGTGGATACCTGCAGAGAATGCTA  
TGAAGCTTATGTAATTTACAACCTTATGGGATTCCTACCAATTATCTAACTAACCGGTATCCAAATCTG  
GTATTAATCCTTGAAGCCAAAGATCAACAGAAACATTTCCCTCCTTATGTTGCTGTCCACCATGGGCTA  
TGGGAGAAGTATTGCTGTTTAGGTGCAAACTAGGTGATTACAGTACACAGTTGCAGACCTTCCACCAC  
CATCGTTGCTTAACTCTGTGAGCTGCTTGGTATATATGACGAAGGGAACCTTAGCTTTTCAAATGCTTGG  
ACTTATTTGGTTATAATAACAACATGTACAGTTGTTGCCATGTATTGCTCCTGCTCTTTTATAAAG  
TACTAAAAGAAGAACTGAGCCCAATCCAACCTGTTGGCAAAATTTCTTGTGTAAGCTGGTGGTTTTTGT  
TTCTTTTTGGCAAGCAGTAGTTATTGCTTTGTTGGTAAAAGTTGGCGTATTCTGAAAAGCATACTGG  
GAATGGCAAACCTGAGAAGCTGTGGCCACCGGACTCCAGGATTTTATTATCTGTATTGAGATGTTCTCG  
CTGCCATTGCTCATCATTACACATTCTCATATAAACCATATGTCCAAGAAGCAGAAGAGGGCTCATGCTT  
TGATTCCTTTCTGCCATGTGGGATGTCTCAGATATTAGAGATGATTTTCTGAACAAGTAAAGCATGTT  
GGACGGACAGTCAGGGGACATCCCAGGAAAAAATGTTTCCCAGGATCAAGATCAAAATGAACATACAA  
GTTTATTATCATCATCACAGAATGCAATTTCCATTGCTTCTTCTATGCCACCTTACCCATGGGTCA  
CTACCAAGGGTTTGGACACACTGTGACTCCCCAGACTACACCTACCACAGCTAAGATATCTGATGAAATC  
CTTAGTGATACTATAGGAGAGAAAAAGAACCTTCAGATAAATCCGTGGATTCC

ACGCGTACGCGGCCGCTCGAGCAGAACTCATCTCAGAAGAGGATCTGGCAGCAATGATATCCTGGATT  
ACAAGGATGACGACGATAAGGTTTAA

## Protein Sequence:

>RC214139 representing NM\_018241  
Red=Cloning site Green=Tags(s)

MPCTCTWRNWRQWIRPLVAVIYLVSIIVAVPLCVWELQKLEVGIIHTKAWFIAGIFLLLTIPIISLWVILQH  
LVHYTQPELQKPIIRILWMVPIYSLDSWIALKYPGIAIYVDTCRECYEAYVIYNFMGFLTNYLTNRYPNL  
VLILEAKDQQKHFPPLCCPPWAMGEVLLFRCKLGVLYTVVVRPFTTIVALICELGGIYDEGNFSFNAW  
TYLVIIINMSQLFAMYCLLLFYKVLKEELSPIQPVGKFLCVKLVVFSWFQAVVIALLVKGVISEKHTW  
EWQTVEAVATGLQDFIICIEMLAAIAHHYTFYKPYVQEAEEGSCFDSFLAMWDVSDIRDDISEQVRHV  
GRTVVRGHPKLPEDQDQNEHTSLLSSSQDAISIASMPPSPMGHYQGFHTVTPQTPTTAKISDEI  
LSDTIGEKKEPSDKSVDS

TRTRPLEQKLISEEDLAANDILDYKDDDDKV

## Chromatograms:

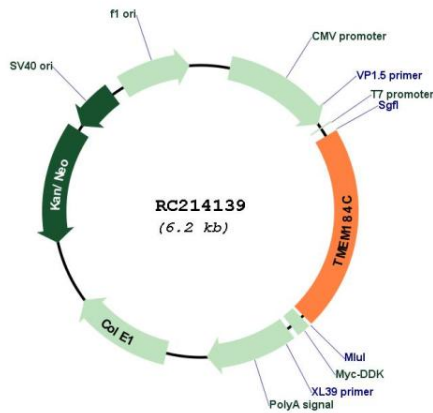
[https://cdn.origene.com/chromatograms/mk6848\\_a11.zip](https://cdn.origene.com/chromatograms/mk6848_a11.zip)

## Restriction Sites:

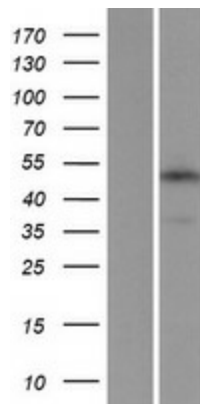
SgfI-MluI



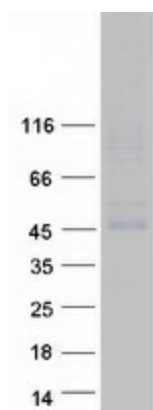
**Domains:** DUF300  
**Protein Families:** Transmembrane  
**MW:** 50 kDa  
**Gene Summary:** Possible tumor suppressor which may play a role in cell growth.[UniProtKB/Swiss-Prot Function]

**Product images:**


Circular map for RC214139



Western blot validation of overexpression lysate (Cat# [LY413183]) using anti-DDK antibody (Cat# [TA50011-100]). Left: Cell lysates from untransfected HEK293T cells; Right: Cell lysates from HEK293T cells transfected with RC214139 using transfection reagent MegaTran 2.0 (Cat# [TT210002]).



Coomassie blue staining of purified TMEM184C protein (Cat# [TP314139]). The protein was produced from HEK293T cells transfected with TMEM184C cDNA clone (Cat# RC214139) using MegaTran 2.0 (Cat# [TT210002]).