

Product datasheet for RC214137

MBNL2 (NM_144778) Human Tagged ORF Clone

Product data:

Product Type:	Expression Plasmids
Product Name:	MBNL2 (NM_144778) Human Tagged ORF Clone
Tag:	Myc-DDK
Symbol:	MBNL2
Synonyms:	MBLL; MBLL39; PRO2032
Mammalian Cell Selection:	Neomycin
Vector:	pCMV6-Entry (PS100001)
E. coli Selection:	Kanamycin (25 ug/mL)
ORF Nucleotide Sequence:	>RC214137 representing NM_144778 Red=Cloning site Blue=ORF Green=Tags(s)

TTTTGTAATACGACTCACTATAGGGCGGCCGGAATTCGTCGACTGGATCCGGTACCGAGGAGATCTGCC
GCC**CGATCGCC**

ATGGCTTTGAACGTTGCCCCAGTCAGAGATACAAAATGGCTGACATTAGAAGTCTGCAGACAGTTTCAA
GAGGAACATGCTCAGCTCTGATGAAGAATGCAAATTTGCTCATCCCCAAAAGTTGTCAGGTTGAAAA
TGAAGAGTAATTGCCTGCTTTGATTCCCTAAAGGGCCGTTGTTTCGAGAGAGAACTGCAAGTATCTTAC
CCTCCGACACACTTAAAACTCACTAGAAATTAATGGAAGGAACAATTTGATTCAGCAAAAACTGCAG
CAGCAATGCTTGCCAGCAGATGCAATTTATGTTTCCAGGAACACCCTTCATCCAGTGCCCACTTTCCC
TGTAGGTCCCAGATAGGACAAATACGGCTATTAGCTTTGCTCCTTACCTAGCACCTGTAACCCCTGGA
GTTGGGTTGGTCCCAACGGAAATTTGCCCACACGCCTGTTATTGTTCCCGGAAGTCCACCGGTCACTG
TCCCAGGCTCAACTGCAACTCAGAACTTCTCAGGACTGACAACTGGAGGTATGCAGGGAGTTCAGCG
AGGAAACTGTGCCCGGGGAGAGACCGACTGCCGCTTTGCACACCCCGCAGACAGCACCATGATCGACACA
AGTGACAACACCGTAACCGTTTGTATGGATTACATAAAGGGCGTTGCATGAGGGAGAAATGCAAAATTT
TTCACCTCCTGCACACTTGACAGCCAAAATCAAAGCTGCGCAGCACCAAGCCAAGCTGCGGTGGC
CGCCAGGCAGCCGCGCCGCGCCACAGTCATGGCCTTTCCCCTGGTGCTCTTCATCCTTTACCAAAG
AGACAAGCACTTGAAAAAGCAATGGTACCAGCGCGTCTTTAACCCAGCGTCTTGCACTACCAGCAGG
CTCTCACCAGCGCACAGTTGCAGCAACACGCCGCTTCAATCCAACAGGGTCAGTTTTGTGCATGACACC
CGCTACCAAGTATTGTACCCATGATGCACAGCGCTACGTCCGCCACTGTCTCTGCAGCAACAACTCCTGCA
ACAAGTGTCCCCTTCGACGCAACAGCCACAGCCAATCAGATAATTCTGAAA

ACGCGTACGCGGCCGCTCGAGCAGAACTCATCTCAGAAGAGGATCTGGCAGCAAATGATATCCTGGATT
ACAAGGATGACGACGATAAGGTTTAA



[View online »](#)

Protein Sequence: >RC214137 representing NM_144778
Red=Cloning site Green=Tags(s)

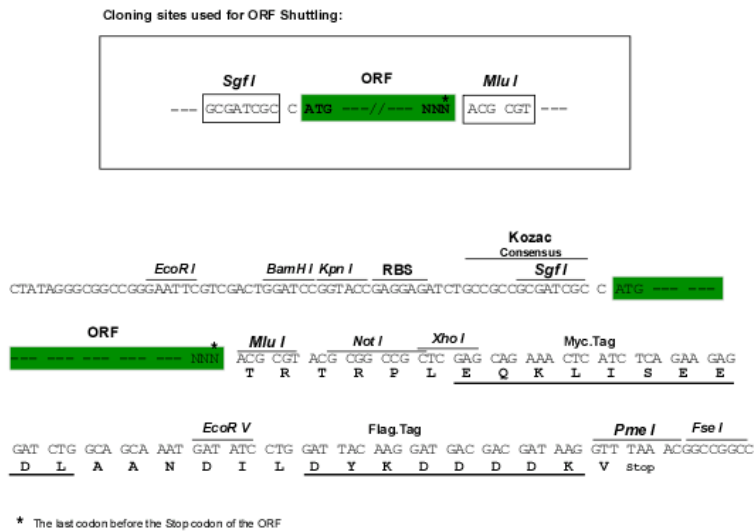
MALNVAPVRDTKWL TLEVC RQFQRGTC SRSD EECKFAHPPKSCQVENGRVIACFD SLKGRCSRENCKYLH
 PPTH LKTQLE INGRNLIQQKTA AAML AQMQFMFPGT LHPVPTFPVGP AIGTNTAISFAPYLAPVTPG
 VGLVPT EILPTTPVIVPGSP PVTVPGSTATQKLLRTDKLEVCREFQRGNCARGETDCRF AHPADSTMIDT
 SDNTVTVCMDYIKGRCMREKCKYFHPPAHLQAKIKAAQH QANQA AAVAAQAAAAAATVMAFP PGALHPLPK
 RQALEK SNGTSAVFNPSVLHYQQAL TSAQLQQA HAFIPTG SVLCMTPATSIVPMMHSATSATVSAATTPA
 TSVPFAATATANQIILK

TRTRPLEQKLISEEDLAANDILDYKDDDDKV

Chromatograms: https://cdn.origene.com/chromatograms/mg4107_d02.zip

Restriction Sites: SgfI-MluI

Cloning Scheme:



ACCN: NM_144778

ORF Size: 1101 bp

OTI Disclaimer: The molecular sequence of this clone aligns with the gene accession number as a point of reference only. However, individual transcript sequences of the same gene can differ through naturally occurring variations (e.g. polymorphisms), each with its own valid existence. This clone is substantially in agreement with the reference, but a complete review of all prevailing variants is recommended prior to use. [More info](#)

OTI Annotation: This clone was engineered to express the complete ORF with an expression tag. Expression varies depending on the nature of the gene.

Components: The ORF clone is ion-exchange column purified and shipped in a 2D barcoded Matrix tube containing 10ug of transfection-ready, dried plasmid DNA (reconstitute with 100 ul of water).

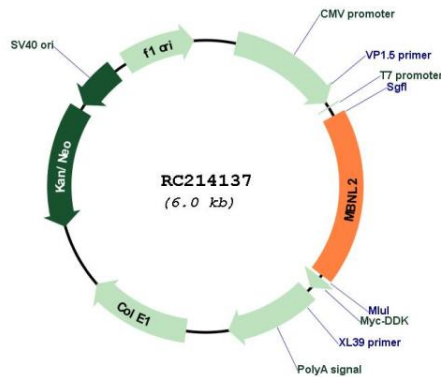
Reconstitution Method:

1. Centrifuge at 5,000xg for 5min.
2. Carefully open the tube and add 100ul of sterile water to dissolve the DNA.
3. Close the tube and incubate for 10 minutes at room temperature.
4. Briefly vortex the tube and then do a quick spin (less than 5000xg) to concentrate the liquid at the bottom.
5. Store the suspended plasmid at -20°C. The DNA is stable for at least one year from date of shipping when stored at -20°C.

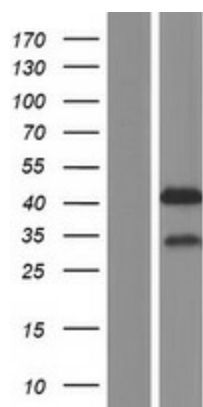
RefSeq: [NM_144778.4](#)
RefSeq Size: 4731 bp
RefSeq ORF: 1104 bp
Locus ID: 10150
UniProt ID: [Q5VZF2](#)
Cytogenetics: 13q32.1
Domains: zf-CCCH
Protein Families: Transcription Factors
MW: 39.2 kDa

Gene Summary: This gene is a member of the muscleblind protein family which was initially described in *Drosophila melanogaster*. This gene encodes a C3H-type zinc finger protein that modulates alternative splicing of pre-mRNAs. Muscleblind proteins bind specifically to expanded dsCUG RNA but not to normal size CUG repeats and may thereby play a role in the pathophysiology of myotonic dystrophy. Several alternatively spliced transcript variants have been described but the full-length nature of only some have been determined. [provided by RefSeq, Mar 2012]

Product images:



Circular map for RC214137



Western blot validation of overexpression lysate (Cat# [LY403412]) using anti-DDK antibody (Cat# [TA50011-100]). Left: Cell lysates from untransfected HEK293T cells; Right: Cell lysates from HEK293T cells transfected with RC214137 using transfection reagent MegaTran 2.0 (Cat# [TT210002]).