

Product datasheet for **RC214135**

CA6 (NM_001215) Human Tagged ORF Clone

Product data:

Product Type: Expression Plasmids
Product Name: CA6 (NM_001215) Human Tagged ORF Clone
Tag: Myc-DDK
Symbol: CA6
Synonyms: CA-VI; GUSTIN
Mammalian Cell Selection: Neomycin
Vector: pCMV6-Entry (PS100001)
E. coli Selection: Kanamycin (25 ug/mL)
ORF Nucleotide Sequence: >RC214135 representing NM_001215
Red=Cloning site Blue=ORF Green=Tags(s)

TTTTGTAATACGACTCACTATAGGGCGCCGGGAATTCGTCGACTGGATCCGGTACCGAGGAGATCTGCC
GCC**CGATCGCC**

ATGAGGGCCCTGGTGCTTCTGCTGTCCCTGTTCCCTGCTGGGTGGCCAGGCCAGCATGTGTCTGACTGGA
CCTACTCAGAAGGGGCACTGGACGAAGCGCACTGGCCACAGCACTACCCCGCTGTGGGGCCAGAGACA
GTCGCCTATCAACCTACAGAGGACGAAGGTGCGGTACAACCCCTCCTGAAGGGCTCAATATGACAGGC
TATGAGACCCAGGCAGGGGAGTTCCTCCATGGTCAACAATGGCCACACAGTGCAGATCAGCCTGCCCTCCA
CCATGCGCATGACAGTGGCTGACGGCACTGTATACATAGCCAGCAGATGCACTTTCAGTGGGGAGGTGC
GTCTCGGAGATCAGCGCTCTGAGCACACCGTGGACGGGATCAGACATGTGATCGAGATTCACATTGTT
CACTACAATTCTAAATACAAGAGCTATGATATAGCCCAAGATGCCCGGATGGTTTGCTGTACTGGCAG
CCTTCGTTGAGGTGAAGAATTACCCTGAAAACACTTATTACAGCAACTTCATTTCTCATCTGGCCAACAT
CAAGTACCCAGGACAAAGAACAACCTGACTGGCCTTGACGTTTCAGGACATGCTGCCAGGAACCTCCAG
CACTACTACACCTACCATGGCTCACTCACCACGCCTCCCTGCACTGAGAACGTCCTGGTTTGTGCTGG
CAGATTTGTCAAGCTCTCCAGGACACAGGTTTGAAGCTGGAGAATTCCTTACTGGATCACCGCAACA
GACCATCCACAACGATTACCGCAGGACCCAGCCCTGAACCACAGAGTGGTGAATCCAACCTCCCGAAT
CAGGAATACACTTAGGCTCTGAATTCAGTTTTACCTACATAAGATTGAGGAAATCTTGACTACTTAA
GAAGAGCATTGAAC

ACGCGTACGCGGCCGCTCGAGCAGAAACTCATCTCAGAAGAGGATCTGGCAGCAATGATATCCTGGATT
ACAAGGATGACGACGATAAGGTTTAA



[View online »](#)

Protein Sequence: >RC214135 representing NM_001215
Red=Cloning site Green=Tags(s)

MRALVLLLSLFLGGQAQHVSDWTYSEGALDEAHWPQHYPACGGQRQSPINLQRTKVRYNPSLKGLNMTG
 YETQAGEFPMVNNGHTVQISLPSTMRMTVADGTVYIAQQMHFWGGASSEISGSEHTVDGIRHVIEIHIV
 HYNKYKSYDIAQDAPDGLAVLA AFVEVKNYPENTYYSNFISHLANIKYPGQRTTLTGLDVQDMLPRNLQ
 HYYTYHGSLTPPCTENVHWFVLADFVKLSRTQVWKLENSLLDHRNKTIHNDYRRTQPLNHRVVESNFPN
 QEYTLGSEFQFYLHKIEEILDYLRRALN

TRTRPLEQKLISEEDLAANDILDYKDDDDKV

Chromatograms: https://cdn.origene.com/chromatograms/mk8007_e10.zip

Restriction Sites: SgfI-MluI

Cloning Scheme:



ACCN: NM_001215

ORF Size: 924 bp

OTI Disclaimer: The molecular sequence of this clone aligns with the gene accession number as a point of reference only. However, individual transcript sequences of the same gene can differ through naturally occurring variations (e.g. polymorphisms), each with its own valid existence. This clone is substantially in agreement with the reference, but a complete review of all prevailing variants is recommended prior to use. [More info](#)

OTI Annotation: This clone was engineered to express the complete ORF with an expression tag. Expression varies depending on the nature of the gene.

Components: The ORF clone is ion-exchange column purified and shipped in a 2D barcoded Matrix tube containing 10ug of transfection-ready, dried plasmid DNA (reconstitute with 100 ul of water).

Reconstitution Method:

1. Centrifuge at 5,000xg for 5min.
2. Carefully open the tube and add 100ul of sterile water to dissolve the DNA.
3. Close the tube and incubate for 10 minutes at room temperature.
4. Briefly vortex the tube and then do a quick spin (less than 5000xg) to concentrate the liquid at the bottom.
5. Store the suspended plasmid at -20°C. The DNA is stable for at least one year from date of shipping when stored at -20°C.

RefSeq: [NM_001215.4](#)

RefSeq Size: 1339 bp

RefSeq ORF: 927 bp

Locus ID: 765

UniProt ID: [P23280](#)

Cytogenetics: 1p36.23

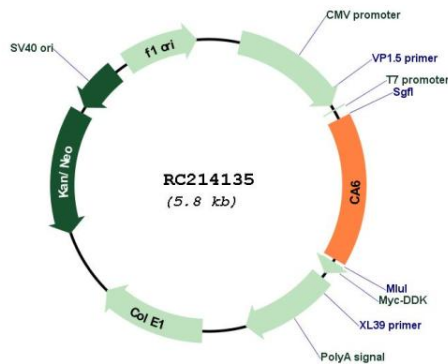
Protein Families: Druggable Genome, Secreted Protein

Protein Pathways: Nitrogen metabolism

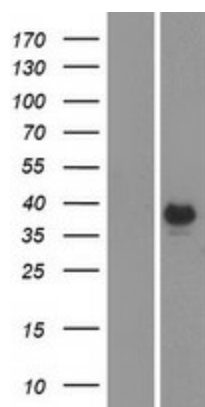
MW: 35.37 kDa

Gene Summary: The protein encoded by this gene is one of several isozymes of carbonic anhydrase. This protein is found only in salivary glands and saliva and protein may play a role in the reversible hydration of carbon dioxide though its function in saliva is unknown. [provided by RefSeq, Jul 2008]

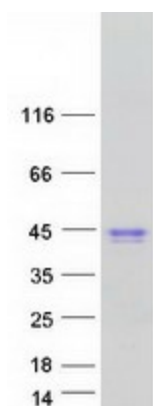
Product images:



Circular map for RC214135



Western blot validation of overexpression lysate (Cat# [LY420071]) using anti-DDK antibody (Cat# [TA50011-100]). Left: Cell lysates from untransfected HEK293T cells; Right: Cell lysates from HEK293T cells transfected with RC214135 using transfection reagent MegaTran 2.0 (Cat# [TT210002]).



Coomassie blue staining of purified CA6 protein (Cat# [TP314135]). The protein was produced from HEK293T cells transfected with CA6 cDNA clone (Cat# RC214135) using MegaTran 2.0 (Cat# [TT210002]).