

Product datasheet for RC214115

PTPRD (NM_002839) Human Tagged ORF Clone

Product data:

Product Type:	Expression Plasmids
Product Name:	PTPRD (NM_002839) Human Tagged ORF Clone
Tag:	Myc-DDK
Symbol:	PTPRD
Synonyms:	HPTP; HPTPD; HPTPDELTA; PTPD; R-PTP-delta; RPTPDELTA
Mammalian Cell Selection:	Neomycin
Vector:	pCMV6-Entry (PS100001)
E. coli Selection:	Kanamycin (25 ug/mL)
ORF Nucleotide Sequence:	>RC214115 representing NM_002839 Red=Cloning site Blue=ORF Green=Tags(s)

TTTTGTAATACGACTCACTATAGGGCGGCCGGAATTCGTCGACTGGATCCGGTACCGAGGAGATCTGCC
GCC**CGATCGCC**

ATGGTGCACGTAGCCAGGCTGCTGCTGCTCCTCACTTTCTTCTCCGCACGGATGCTGAGACACCTC
CAAGGTTTACACGAACACCCGTTGATCAGACAGGGGTCTCTGGCGGAGTTGCCTCTTTCATCTGCCAAGC
TACGGGAGACCAAGACCTAAAATTGTCTGGAACAAAAAGAAAGAAAGTCAGCAATCAGAGATTTGAG
GTAATAGAGTTTGACGATGGGTCTGGATCAGTTCTCAGAATACAACCCTTACGGACTCCGAGGGATGAGG
CCATTTATGAATGTGTGGCCTCAAATAATGTGGGAGAAATAAGTGTATCCACCAGACTCACAGTTTTGCG
GGAAGATCAAATCCCAGGGGCTCCCTACCATTGACATGGGCCACAGTTGAAGGTGGTTGAGCGTACT
CGCACGGCCACCATGCTTTGTGCAGCCAGTGGTAAATCCGGATCCAGAAATCACTTGGTTTTAAGATTTCT
TACCTGTGGACACAAGCAACAACATGGTCGTATTAAGCAGTTACGATCAGAATCTATTGGTGGTACACC
AATAAGAGGAGCCCTTCAGATTGAGCAGAGTGAAGAGTCTGACCAAGGAAAAATAGAGTGTGTTGCCACC
AACAGCGCGGGCACTCGCTATCCGCTCCTGCCAATTTATATGTCAGAGAGCTGCGAGAAGTTCCGCCGTG
TCCCACCAAGATTCTCTATCCCACCCACTAATCATGAAATCATGCCAGGCGGAAGCGTTAATACACCTG
TGTGGCCGTGGGGTCACCAATGCCTTATGTAAGTGGATGTTGGGGCAGAAGATCTGACACCTGAAGAT
GATATGCCAATAGGAAGAAATGTGCTAGAAGTGAATGATGTAAGACAGTCAGCAAATACACCTGTGTTG
CTATGTCAACACTGGGTGTCATTGAAGCAATAGCACAGATCACTGTCAAAGCCTTACCCAAACCTCCAGG
AACTCCTGTAGTGACCGAGAGCAGACTACAAGCATCACACTGACGTGGGACTCTGGGAACCTGAGCCT
GTTTCTTATTACATAATTCAGCATAAACCTAAAACTCTGAGGAACCTTACAAAGAAATGATGGGTGG
CGACCACAGCTACAGTGTGCTGGACTAAGTCCCTACTCGGATTATGAATTCAGGGTGTGCTGTCAA
TAACATTGGGCGGGGCTCCAGCGAACCTGTGCTAACACAAACCTCAGAGCAAGCACCATCCAGTGCC
CCGAGGGATGTCCAGGCAGAAATGTTGAGTTCGACCACCATTTTGGTACAGTGAAGGAACCTGAAGAGC
CAAATGGACAGATCCAAGGATATAGAGTTTATTATACAATGGATCCCACTCAACATGTCAACAACCTGGAT
GAAACACAATGTAGCTGACAGCCAAATCACTACTATTGGCAACTAGTGCCCCAGAAAACATATTCTGTC



AAAGTCCTGGCTTTTACCTCAATTGGAGATGGTCCCCTTTCAAGTGACATACAAGTCATCACTCAGACAG
GAGTACCAGGGCAGCCACTAAACTTCAAAGCAGAACCTGAGTCTGAAACAAGTATTTTGCTCTTTGGAC
ACCTCCACGTTGAGATACCATTGCCAATATGAACTGGTCTACAAAGATGGGGAGCATGGAGAGGAGCAA
CGAATTACCATTGAGCCAGGGACATCATATAGGCTGCAAGGACTGAAACCAAACAGCTTATACTATTTCC
GTCTGGCTGCACGCTCCCCTCAAGGCTGGGTGCTTCTACTGCAGAAATATCAGCTAGAACCATGCAGTC
AAAGCCGTGAGCTCCTCCTCAAGACATTAGTTGCACCAGCCCAAGTTCCTACTAGTATTTTGGTAAGTTGG
CAACTCCACCAGTGAAAAACAGAATGGCATTACTGAACTCCATCAAGTACACTGCAGTGGATGGATG
GGGAAGATGACAAGCCTCACGAGATTTTGGGAATTCCTTCGGACACTACCAAATACCTTTTGGAACAGCT
GGAAAAATGGACTGAATACCGGATCACTGTGACAGCCCATACAGATGTCGGCCCTGGCCCTGAGAGCTTG
TCCGTGTTGATTGAAACCAATGAAGATGTTCTAGTGGTCTCCTCGCAAAGTCGAGGTAGAGGCTGTCA
ACTCAACATCTGTTAAAGTCTCATGGCGCTCACCCGTGCCAATAAACAGCATGGCCAGATAAGAGGATA
TCAGGTGCATTATGTGAGGATGGAAAAATGGTGAGCCCAAGGGCCAGCCCATGCTGAAAGATGTCATGCTG
GCTGATGCACAGTGGGAATTTGATGATACTACTGAACATGACATGATCATTTCTGGGCTCCAGCCTGAAA
CTTCTACTCCCTCACCGTCACAGCCTACACAACCAAGGAGATGGTGTCTGCAGCAAGCCCAAAGTGGT
GTCCACCCTGGGGCAGTTCAGGGAAACCTCGGCTTGTGATTAACCACACTCAGATGAATACTGCTCTT
ATTCAGTGGCACCTCCGGTGGACACATTTGGACCTTTCAGGGTACCCTCTAAAAATTTGGCCGAAGG
ATATGGAGCCACTTACTACTCTTGTGATTTCTGAAAAAGAAGATCACTTTACAGCTACAGACATCCACAA
GGGAGCATCATACGTTTCCAGGCTCTCAGCCAGAAAAAAGTGGGCTTTGGGGAGGAGATGGTGAAGGAG
ATTTCCATTCCAGAAGAAGTACCAACTGGATTCCCTCAAACCTTCACTCAGAAGGCACCACTTCAACCT
CCGTCCAGTTATCTTGGCAACCCTGTCTGGCAGAGAGAAATGGCATTATCACCAGTATACCCCTTCT
TTATAGGGATATCAACATCCCCCTTCTCCCGATGGAGCAGCTTATTGTTCCAGCTGACACCCTATGACA
CTCACTGGCTTAAAACCAGATACCACATACGATGTAAAAGTATGTGCTCATACGAGCAAAGGGCCCGGGC
CATATAGTCCCAGTGTCCAGTTCAGGACACTGCCTGTGGATCAAGTGTGCAAAAAATTTTCATGTTCAA
AGCAGTAATGAAGACTTCCGTGTTGCTGTCTTGGGAGATTCCAGAGAATTATAACTCCGCTCAGCTGCTTTC
AAAATTTCTTATGATGATGGAAAAATGGTAGAAGAAGTGGATGGCCGAGCCACACAGAAGTTAATTGTCA
ACCTGAAGCCTGAGAAATCATATTCATTTGTGCTGACAAATCGTGGAAACAGTGTGGTGGGCTGCAGCA
CAGGGTACCGCAAAGACTGCACCAGATGTATTACGTACCAAGCCTGCCTTATTGGGAAGACCAACTTG
GATGGCATGATTACTGTGCAACTGCCTGAAGTACCTGCAATGAGAATATAAAAGTTACTACATAATAA
TTGTGCCTTTGAAGAAATCTCGCGGAAATTTATCAAGCCATGGGAGAGTCCAGATGAAATGGAATTAGA
TGAGCTGCTTAAGGAGATATCTAGGAAGCGCAGAAGCATCCGTTATGGGAGAGAAGTTGAATTAAGCCA
TATATTGCCGCTCACTTTGATGTCTTCCCACTGAGTTCACCCTGGGGGATGACAAGCATTATGGTGGAT
TTACAAAACAGCAACTCCAAAGTGGTCAAGAATATGTCTTCTTTGTGTTAGCAGTAATGGAACATGCAGA
GTCTAAGATGTATGCAACCAGCCCTTACTCCGACCCCGTGGTGTCAATGGATCTGGATCCGACGCAATC
ACGGATGAAGAAGAAGGCTTGATCTGGGTTGTAGGTCCTGTCTTGCAGTGGTCTTTATCATCTGCATTG
TCATTGCTATTCTTTTATAAAAGGAAGAGGGCAGAGTCCGACTCTAGAAAAAGCAGCATACCGAACAA
TAAGGAGATCCCTTACACCACCAACAGACCCTGTAGAAGTGGGGCCTTAACTTTCAAACACCGGGT
ATGGCTAGCCATCCTCCAATACCCATCTTGAAGTGCAGACCACATTGAAAGATTGAAAGCAAATGACA
ACTTGAAGTTTCCCAGGAATATGAGTCAATTGACCCTGGCCAGCAGTTCCTTGGGAACATTCAAACCT
GGAAGTAAACAAACAAAGAATAGATACGCGAATGTAATCGCATATGATCATTCCCGGTTCTCCTATCA
GCTATAGAAGGGATCCCAGGAAGTGAATGTGAATGCCAACTACATAGATGGCTATAGGAAGCAAATG
CCTATATTGCAACACAGGGATCTCTCCCGAAACATTTGGGGACTTTTGGAGAATGATATGGGAACAACG
GAGTGCCACAGTTGTCATGATGACAAAATAGAAAGAAAGATCAAGGGTGAAGTGTGACCAGTATTGGCT
AGCAGAGGCACAGAAACCCAGGACTCGTTCAAGTAAACGCTGCTTGATACTGTGGAGCTGGCCACATATT
GTGTTGCAACATTTGCACTTTACAAGAATGTTCAAGTGAAGAAGAGAAGTGAAGACAATCCAGTTTAC
CGCTGGCCTGATCATGGTGTCCAGAACACCCTACACCTTTTCTAGCTTTCTTACGTAGAGTCAAACCC
TGTAACCCTCCCGATGCTGGTCCGATGGTGTGCACTGCAGTGGGGAGTTGGCCGGACTGGTGTCTTCA
TCGTCATAGATGCCATGTTAGAAAGAATAAAGCATGAAAAAAGTGTAGATATTTATGGCCATGTAACCTT
AATGAGAGCCCAGAGGAATATATGGTTCAAACAGAAAGCAATACATCTTTATCCATGATGCAGTGTTA
GAAGCAGTGACTTGTGGAATACCGAAGTGCAGCTAGAAACTGTATGCCTACATTCAGAAGCTGACAC
AAATAGAAACGGGAGAGAATGTCACAGGAATGGAGCTCGAATTTAAGCGTCTAGCCAGCTCAAAGCTCA
CACCTCAAGGTTTATCAGTGCCAATCTTCCATGTAATAAATTCAAAAATCGCCTTGTTAATATTATGCCA
TATGAATCCAAAGGATGCTGACAGCCTATCCGTGGAGTGAAGGATCTGATTACATCAATGCCAGTT

TTATTGATGGATACAGACAACAGAAAGCCTACATCGCTACCCAGGGGCCCTTGGCAGAGACCACTGAAGA
 CTTCTGGCGGATGCTCTGGGAACACAATTCACCATAGTTGTGATGCTCACCAAGCTGCGTAAAATGGGC
 AGAGAGAAATGTACCAATACTGGCCAGCAGAACGGTCTGCAAGATACCACTACTTTGTTGTAGATCCCA
 TGGCTGAGTACAACATGCCACAGTATATCTAAGGGAATCAAGGTCACAGATGCCAGGGACGGCCAGTC
 CCGAACAGTAAGGCAGTTCAGTTCAGTACTGCTGCTGAGCAAGGAGTCCAAAGTCCGGAGAAGGATTT
 ATTGACTTCATCGCCAAGTCCATAAAAACAAAGACAGTTTGGCCAAGATGGACCCATTTAGTCCATT
 GCAGCGCGGGCGTTGGAAGAAGTGGAGTCTTCAACGCTAAGCATTGTTTTGAAAGAATGAGATATGA
 AGGAGTTGTAGATATCTCCAGACTGTCAAATGTTAAGAACACAACAGCAGCTATGGTACAGACAGAG
 GATCAATATCAGTTTTCTATCGTGCCGCACTAGAGTACCTGGGAGCTTTGACCACTATGCAACG

ACGCGTACGCGGCCGCTCGAGCAGAAACTCATCTCAGAAGAGGATCTGGCAGCAAATGATATCCTGGATT
 ACAAGGATGACGACGATAAGGTTTAA

Protein Sequence:

>RC214115 representing NM_002839
 Red=Cloning site Green=Tags(s)

MVHVARLLLLLLTFFLRDAETPPRFRTRPVDQTVSGGVASFICQATGDPRPKIWNKKGKVSQRFE
 VIEFDDGSGSVLRIQPLRTRDEAIYECVASNNVGEISVSTRLLVLRDQIPRGFPTIDMGPQLKVVERT
 RTATMLCAASGNPDPEITWFKDFLPVDTSNNGRIKQLRSEISGGTPIRGALQIEQSESDQKGYECVAT
 NSAGTRYSAPANLYVRELREVRVPPRF SIPPTNHEIMP GGSVNITCVAVGSPMPYVKWMLGAEDLTPED
 DMP IGRNVLELNDVRQSANYTCVAMSTLVIEAIAQITVKALPKPPGTPVVTESTATSITLTDWDSGNPEP
 VSYII IQHKPKNSEEL YKEIDGVATTRYVAGLSPYSDYEFVRVAVNNIGRGPSEPVL TQTSEQAPSSA
 PRDVQARML SSTIILVQWKEPEEPNGQIQGYRVYVYTMPTQHVNNMKNHNVADSQITTIIGNLVLPQKTYSV
 KVLAFSTIGDGPLSSDIQVITQTGVPGQPLNFKAEPESETSILL SWTPPRSDTIANYELVYKDGEHGEEQ
 RITIEPGTSYRLQGLKPNLSYFRLAARSPQGLGASTAEISARTMQSKPSAPPQDISCTSPSSTSILVSW
 QPPPVEKQNGIITEYSIKYTAVDGEDDKPHEILGIPSDTTKYLLEQLEKWTEYRITVTAHTDVGPGPESL
 SVLIRTNEDVPSGPPRKEVEAVNSTSVKVSWSRSPVKNQHQGQIRGYQVHYVRMENGEPKQPMLKDVML
 ADAQWFEFDDTTEHDMIISGLQPETSYSLTVTAYTTKGDGARSKPKLVSTTGAVPGKPLVINHTQMNTAL
 IQWHPPVDTFGLQGYRLKFRKDMEPLTLEFSEKEDHFTATDIHKGASYVFRLSARNKVGFGHEEMVKE
 ISIPVEEPTGFQNLHSEGTSTSVQLSWQPPVLAERNGIITKYTLLYRDINIPLLPMEQLIVPADTTMT
 LTGLKPDTTYDVKVCATSKGPGYSPSVQFRTLFPVDQVFAKNFHVAVMKT SVLLSWEIPENYNSAMPF
 KILYDDGKMVEEVDGRATQKLI VNLKPEKSYFVLTNRGNSAGGLQHRVTAKTAPDVLRTKPAFIGKTNL
 DGMITVQLPEVPANENIKGYIIIVPLKSRGKFIKPWESPDEMEDELLEKISRKRRSIRYGREVELKP
 YIAAHFDVLPTEFTLGD DKHYGGFTNKQLQSGQEYVFFVLAVMEHAESKMYATSPYSDPVVSMDLDPQPI
 TDEEEGLIWWVGPVLAVVFIICIVIAILLYKRKRAESDRKSSIPNNKEIPSHHPTDPVELRRLNFQTPG
 MASHPPPILELADHIERLKANDNLKFSQEYESIDPGQQTWEHSNLEVNKPKNRYANVIA YDHSRVLLS
 AIEGIPGSDYVNANYIDGYRKQNAIYIATQGSLPETF GDFWRMIWEQRSATVMMTKLEERSRVKCDQYWP
 SRGTETHGLVQVTLTLDVELATYCVRTFALYKNGSSEKREVRQFQTAWPDHGVPEHPTPFLAFLRRVKT
 CNPPDAGPMVVHCSAGVGRTGCFIVIDAMLERIKHEKTVDIYGHVTLMRAQRNYMVQTEDQYIFIH DALL
 EAVTCGNTEVPARNLYAYIQKL TQIETGENVTGMELEFKRLASSKAHTRSFI SANLPCNKFNRLVNIMP
 YESTRVCLQPIRGVEGSDYINASFIDGYRQQKAYIATQGPLAETTEDFWRMLWEHNSTIVMLTKLREMG
 REKCHQYWP AERSARYQYFVVDPMAEYNMPQYILREFKVT DARDGQSRTVVRQFQFDWPEQGVKPSGEGF
 IDFIGQVHKTKEQFGQDGPISVHCSAGVGRTGVFITLSIVLERMRYEGVVDIFQTVKMLRTQRPAMVQTE
 DQYQFSYRAALEYLG SFDHYAT

TRTRPLEQKLISEEDLAANDILDYKDDDDKV

Chromatograms:

https://cdn.origene.com/chromatograms/mg4453_f07.zip

Restriction Sites:

Sgfl-Mlul

Cloning Scheme:



ACCN: NM_002839

ORF Size: 5736 bp

OTI Disclaimer: Due to the inherent nature of this plasmid, standard methods to replicate additional amounts of DNA in E. coli are highly likely to result in mutations and/or rearrangements. Therefore, OriGene does not guarantee the capability to replicate this plasmid DNA. Additional amounts of DNA can be purchased from OriGene with batch-specific, full-sequence verification at a reduced cost. Please contact our customer care team at custsupport@origene.com or by calling 301.340.3188 option 3 for pricing and delivery.

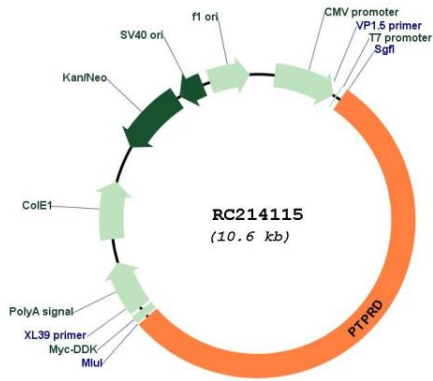
The molecular sequence of this clone aligns with the gene accession number as a point of reference only. However, individual transcript sequences of the same gene can differ through naturally occurring variations (e.g. polymorphisms), each with its own valid existence. This clone is substantially in agreement with the reference, but a complete review of all prevailing variants is recommended prior to use. [More info](#)

OTI Annotation: This clone was engineered to express the complete ORF with an expression tag. Expression varies depending on the nature of the gene.

Components: The ORF clone is ion-exchange column purified and shipped in a 2D barcoded Matrix tube containing 10ug of transfection-ready, dried plasmid DNA (reconstitute with 100 ul of water).

Reconstitution Method:	<ol style="list-style-type: none">1. Centrifuge at 5,000xg for 5min.2. Carefully open the tube and add 100ul of sterile water to dissolve the DNA.3. Close the tube and incubate for 10 minutes at room temperature.4. Briefly vortex the tube and then do a quick spin (less than 5000xg) to concentrate the liquid at the bottom.5. Store the suspended plasmid at -20°C. The DNA is stable for at least one year from date of shipping when stored at -20°C.
RefSeq:	NM_002839.4
RefSeq Size:	6263 bp
RefSeq ORF:	5739 bp
Locus ID:	5789
UniProt ID:	P23468
Cytogenetics:	9p24.1-p23
Domains:	Y_phosphatase, ig, PTPc_motif, IGc2, IG, FN3
Protein Families:	Druggable Genome, Phosphatase, Transmembrane
MW:	214.71 kDa
Gene Summary:	<p>The protein encoded by this gene is a member of the protein tyrosine phosphatase (PTP) family. PTPs are known to be signaling molecules that regulate a variety of cellular processes including cell growth, differentiation, mitotic cycle, and oncogenic transformation. This PTP contains an extracellular region, a single transmembrane segment and two tandem intracytoplasmic catalytic domains, and thus represents a receptor-type PTP. The extracellular region of this protein is composed of three Ig-like and eight fibronectin type III-like domains. Studies of the similar genes in chicken and fly suggest the role of this PTP is in promoting neurite growth, and regulating neurons axon guidance. Multiple alternatively spliced transcript variants of this gene have been reported. A related pseudogene has been identified on chromosome 5. [provided by RefSeq, Jan 2010]</p>

Product images:



Circular map for RC214115