

Product datasheet for RC214112

SCML1 (NM_001037535) Human Tagged ORF Clone

Product data:

Product Type:	Expression Plasmids
Product Name:	SCML1 (NM_001037535) Human Tagged ORF Clone
Tag:	Myc-DDK
Symbol:	SCML1
Mammalian Cell Selection:	Neomycin
Vector:	pCMV6-Entry (PS100001)
E. coli Selection:	Kanamycin (25 ug/mL)
ORF Nucleotide Sequence:	>RC214112 representing NM_001037535 Red=Cloning site Blue=ORF Green=Tags(s)

TTTTGTAATACGACTCACTATAGGGCGGCCGGAATTCGTCGACTGGATCCGGTACCGAGGAGATCTGCC
GCC**CGATCGCC**

ATGATGTCTAACAGCTCCAGTGAAATCGATGTGCAGGAACCGAATATTGTATCTGACGCATCCTGTAATA
CTGAAGAGCAACTGAAGACAGTTGATGATGTCTTATTCATTGCCAGGTTATATATGATGCTCTGCAAAA
CCTGGATAAGAAGATTGATGTGATTCGTAGAAAAGGTTTCAAAAATCCAACGTTTCCATGCGAGATCCCTG
TGGACAAATCATAAGCGATATGGATATAAAAAGCATTCTTACCGGCTTGTTAAAAAGCTTAACTCCAGA
AAATGAAGAAAAATGAGGTTTACGAGACATTCTCCTACCCTGAAAGTTACAGCCCCACTTTACAGTGTC
AAGGCGTGAGAATAATTCCTCCGAGCAACCTTCCAAGGCCATCCTTTTGCATGGAAGAATACCGAGGAGCT
GAGCTGGAGGAGGACCCGATCCTCAGCCGCACTCCGAGTCCAGTGCATCCCTCAGATTTCTCTGAGCATA
ATTGTCAGCCGATTATGCATCTGATGGTGCAACGTATGGTTCTTCTTCAGGGCTCTGCCTTGGCAACCC
TCGGGCTGACAGCATCCACAACCTTACTCAACTGACCATGCTTCTGCAGCACCACCTTCAGTTACAAGG
TCACCAGTTGAAAATGACGGTTACATAGAGGAAGGAAGCATCACTAAGCACCTTCAACCTGGTCGGTGG
AAGCAGTGGTCTATTTCTAAAACAAACAGATCCTCTTGCAATTATGCCCTCTTGTGACCTTTCAGAAG
CCATGAAATTGACGGGAAGGCTCTGCTCCTACTCAGAGTGACGTGTTGCTGAAGCACTTGGGGTGAAG
CTGGGAACGGCTGTGAAGCTATGCTACTACATTGACCGACTTAACAAGGAAAATGCTTTGAAAAT

ACGCGTACGCGGCCGCTCGAGCAGAAACTCATCTCAGAAGAGGATCTGGCAGCAAATGATATCCTGGATT
ACAAGGATGACGACGATAAGGTTTAA



[View online »](#)

Protein Sequence: >RC214112 representing NM_001037535
Red=Cloning site Green=Tags(s)

MMSNSSEIDVQEPNIVSDASCNTEEQLKTVDDVLIHCQVIYDALQNLDDKIDVIRRVKSKIQRFHARSL
 WTNHKRYGYKKHSYRLVKKLKQMKKNEVYETFSYPEYSPTLPVSRRENNSPSNLPRPFCMEEYQRA
 ELEEDPILSRTPSPVHPSDFSEHNCQPYASDGATYGSSSGLCLGNPRADSIHNTYSTDHASAAPPSVTR
 SPVENDGYIEEGSITKHPSTWSVEAVVFLKQTDPLALCPLVDLFRSHEIDGKALLLLTSDVLLKHLGVK
 LGTAVKLCYYIDRLKQKCFEN

TRTRPLEQKLISEEDLAANDILDYKDDDDKV

Chromatograms: https://cdn.origene.com/chromatograms/ja1428_d04.zip

Restriction Sites: SgfI-MluI

Cloning Scheme:

Cloning sites used for ORF Shuttling:



* The last codon before the Stop codon of the ORF

ACCN: NM_001037535

ORF Size: 906 bp

OTI Disclaimer: The molecular sequence of this clone aligns with the gene accession number as a point of reference only. However, individual transcript sequences of the same gene can differ through naturally occurring variations (e.g. polymorphisms), each with its own valid existence. This clone is substantially in agreement with the reference, but a complete review of all prevailing variants is recommended prior to use. [More info](#)

OTI Annotation: This clone was engineered to express the complete ORF with an expression tag. Expression varies depending on the nature of the gene.

Components: The ORF clone is ion-exchange column purified and shipped in a 2D barcoded Matrix tube containing 10ug of transfection-ready, dried plasmid DNA (reconstitute with 100 ul of water).

Reconstitution Method:

1. Centrifuge at 5,000xg for 5min.
2. Carefully open the tube and add 100ul of sterile water to dissolve the DNA.
3. Close the tube and incubate for 10 minutes at room temperature.
4. Briefly vortex the tube and then do a quick spin (less than 5000xg) to concentrate the liquid at the bottom.
5. Store the suspended plasmid at -20°C. The DNA is stable for at least one year from date of shipping when stored at -20°C.

RefSeq Size: 2693 bp

RefSeq ORF: 627 bp

Locus ID: 6322

UniProt ID: [Q9UN30](#)

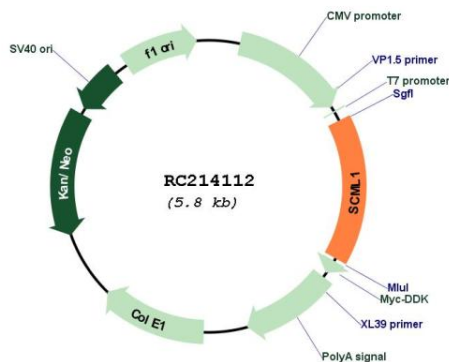
Cytogenetics: Xp22.13

Protein Families: Transcription Factors

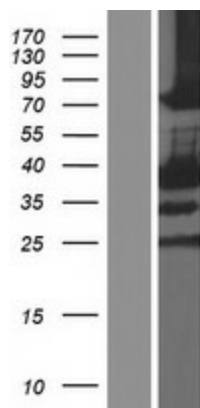
MW: 34.22 kDa

Gene Summary: Putative Polycomb group (PcG) protein. PcG proteins act by forming multiprotein complexes, which are required to maintain the transcriptionally repressive state of homeotic genes throughout development. May be involved in spermatogenesis during sexual maturation (By similarity).[UniProtKB/Swiss-Prot Function]

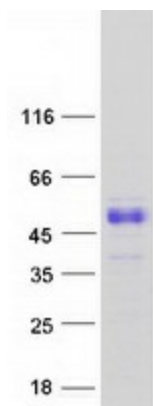
Product images:



Circular map for RC214112



Western blot validation of overexpression lysate (Cat# [LY421919]) using anti-DDK antibody (Cat# [TA50011-100]). Left: Cell lysates from untransfected HEK293T cells; Right: Cell lysates from HEK293T cells transfected with RC214112 using transfection reagent MegaTran 2.0 (Cat# [TT210002]).



Coomassie blue staining of purified SCML1 protein (Cat# [TP314112]). The protein was produced from HEK293T cells transfected with SCML1 cDNA clone (Cat# RC214112) using MegaTran 2.0 (Cat# [TT210002]).