

Product datasheet for RC214105

INSL6 (NM_007179) Human Tagged ORF Clone

Product data:

Product Type:	Expression Plasmids
Product Name:	INSL6 (NM_007179) Human Tagged ORF Clone
Tag:	Myc-DDK
Symbol:	INSL6
Synonyms:	RIF1
Mammalian Cell Selection:	Neomycin
Vector:	pCMV6-Entry (PS100001)
E. coli Selection:	Kanamycin (25 ug/mL)
ORF Nucleotide Sequence:	>RC214105 ORF sequence Red=Cloning site Blue=ORF Green=Tags(s)

TTTTGTAATACGACTCACTATAGGGCGGCCGGAATTCGTCGACTGGATCCGGTACCGAGGAGATCTGCC
GCC**CGATCGCC**

ATGCCGCGGCTCCTCCGCTTGCCCTGCTGTGGCTGGACTCCTGCTGGTTCGGTTTTCTCGTGAAGTGA
GCGACATCAGCAGTGCCAGGAAGCTGTGCGGCAGGTAAGTGGTAAAGAAATAGAAAACTCTGCGGCCA
TGCCAACTGGAGCCAGTCCGTTTCGAGGAGGAAACCCCTTTCACGGTTGATTGCACAGGCCTCGGAG
AAGGTCGAAGCCTACAGCCATACAGTTCGAAAGCCCGCAAACCGCTTCCCGGCCCGGGAAGAGGCA
CAAACCCAGTGTCTACTTCTGGGAAGAAGCAGTAAACAGTTGGGAAATGCAGTCACTACCTGAGTATAA
GGATAAAAAGGGATATTCACCCCTTGGTAAGACAAGAGAAATTTCTTCATCACATAATATCAATGTATAT
ATTCATGAGAATGCAAAATTTTCAGAAGAAACGTAGAAAACAAATTTAAACCTTAAGCAATTTGTTTTGGG
GGCATCATCCCCAAAGAAACGCAGAGGATATTCAGAAAAGTGTGTCTTACAGGATGTACAAAAGAAGA
ACTTAGCATTGCATGTCTCCATATATTGATTTTAAAAGGCTAAAGGAAAAAAGATCATCACTTGTAACT
AAGATATAC

ACGCGTACGCGGCGCTCGAGCAGAACTCATCTCAGAAGAGGATCTGGCAGCAATGATATCTGGATT
ACAAGGATGACGACGATAAGGTTTAA



[View online »](#)

Protein Sequence: >RC214105 protein sequence
Red=Cloning site Green=Tags(s)

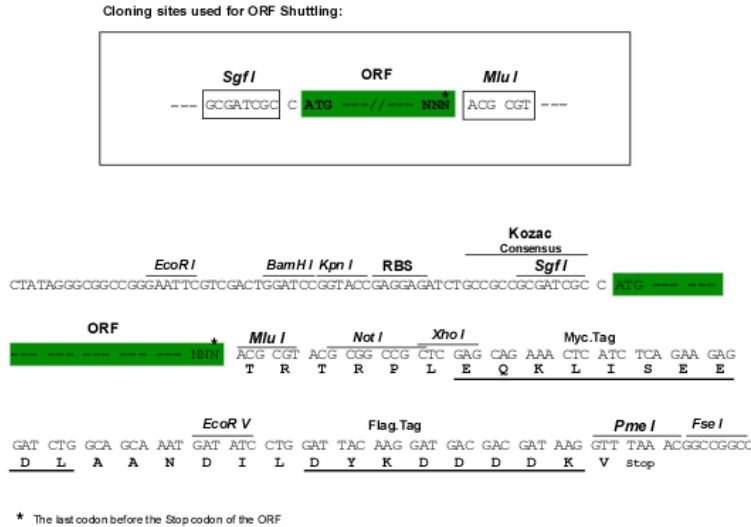
MPRLRLSLLWLGLLLVRFSDISSARKLCGRYLKVEIEKLCGHANWSQFRFEEETPFSSRLIAQASE
 KVEAYSPYQFESPQTASPARGRTNPVSTSWEEAVNSWEMQSLPEYKDKKGYSPLGKTREFSSSHNINVY
 IHENAKFQKRRNKIKITLSNLFWGHPQRKRRGYSEKCLTGCTKEELSIACLPYIDFKRLKEKRSSLVT
 KIY

TRTRPLEQKLISEEDLAANDILDYKDDDDKV

Chromatograms: https://cdn.origene.com/chromatograms/mk6466_c07.zip

Restriction Sites: SgfI-MluI

Cloning Scheme:



ACCN: NM_007179

ORF Size: 639 bp

OTI Disclaimer: The molecular sequence of this clone aligns with the gene accession number as a point of reference only. However, individual transcript sequences of the same gene can differ through naturally occurring variations (e.g. polymorphisms), each with its own valid existence. This clone is substantially in agreement with the reference, but a complete review of all prevailing variants is recommended prior to use. [More info](#)

OTI Annotation: This clone was engineered to express the complete ORF with an expression tag. Expression varies depending on the nature of the gene.

Components: The ORF clone is ion-exchange column purified and shipped in a 2D barcoded Matrix tube containing 10ug of transfection-ready, dried plasmid DNA (reconstitute with 100 ul of water).

Reconstitution Method:

1. Centrifuge at 5,000xg for 5min.
2. Carefully open the tube and add 100ul of sterile water to dissolve the DNA.
3. Close the tube and incubate for 10 minutes at room temperature.
4. Briefly vortex the tube and then do a quick spin (less than 5000xg) to concentrate the liquid at the bottom.
5. Store the suspended plasmid at -20°C. The DNA is stable for at least one year from date of shipping when stored at -20°C.

RefSeq: [NM_007179.3](#)

RefSeq Size: 711 bp

RefSeq ORF: 642 bp

Locus ID: 11172

UniProt ID: [Q9Y581](#)

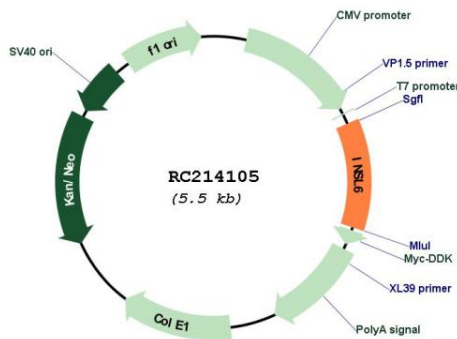
Cytogenetics: 9p24.1

Protein Families: Secreted Protein

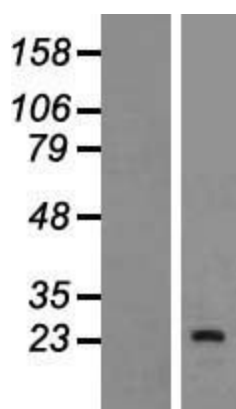
MW: 24.9 kDa

Gene Summary: The protein encoded by this gene contains a classical signature of the insulin superfamily and is significantly similar to relaxin and relaxin-like factor. This gene is preferentially expressed in testis. Its expression in testis is restricted to interstitial cells surrounding seminiferous tubules, which suggests a role in sperm development and fertilization. [provided by RefSeq, Jul 2008]

Product images:



Circular map for RC214105



Western blot validation of overexpression lysate (Cat# [LY416140]) using anti-DDK antibody (Cat# [TA50011-100]). Left: Cell lysates from untransfected HEK293T cells; Right: Cell lysates from HEK293T cells transfected with RC214105 using transfection reagent MegaTran 2.0 (Cat# [TT210002]).