

## Product datasheet for **RC214092**

### **PTX4 (NM\_001013658) Human Tagged ORF Clone**

#### **Product data:**

Product Type:	Expression Plasmids
Product Name:	PTX4 (NM_001013658) Human Tagged ORF Clone
Tag:	Myc-DDK
Symbol:	PTX4
Synonyms:	C16orf38
Mammalian Cell Selection:	Neomycin
Vector:	pCMV6-Entry (PS100001)
E. coli Selection:	Kanamycin (25 ug/mL)



[View online »](#)

**ORF Nucleotide Sequence:**

>RC214092 representing NM\_001013658  
 Red=Cloning site Blue=ORF Green=Tags(s)

TTTTGTAATACGACTCACTATAGGGCGGCCGGGAATTCGTCGACTGGATCCGGTACCGAGGAGATCTGCC  
 GCC**GCGATCGCC**

ATGGGGAGTGAAACTGGGAGGTCACAGGTCCACCTTGTGGCAGTCGGTGTGAACGGCCTCCCGGACTCC  
 CACGCGGGGTCCACGGACAGTTCGGAGTGTGTGGCCCTGTGGGCCTGCGCTGGTTCGGAGATTCCA  
 GGAGGTGACCTGGACACACCTGCAGAACATCGCCAGCACTACAACGTGTCTACAACGTTGACGTCGG  
 TTCGGAGCCTGGCGGAAGAGAGCCAGGCTGTGGCTCAGGCAGTCAACCGGTACAGGCCTCGGTGCAGG  
 GGGAGCTGGCGCAGCTCAAGGCTGGGTGAGGAAGCTGCAGCGCCGAGGCCGGAAAGTAGACACGCGGT  
 GCGGGCCTTGGACCTCACCTGGGCGAGAGGAGCCAGCAGCGGGCCGGGAAAGGACACACAAGGCC  
 CAGAGGGACGCCCTGCAGGACTCACTGGCAGCCTGGAGGGCCTCGTCCACAGCCAGGGCCAGGCTGG  
 CTGCTCTGGAGGGCGGCTGCCCGTGGCCACCCTGGCACTGCAGCCCTCGGGCCGGCCCTGGTCCCAAC  
 CCCAACCCAGCCTGAGGAGCTGGGCCGACCTCCCTGAAGCTTACAGGGACAGGCAGGAGCTCCGAGCT  
 GCCTCTGAGCACAGGGGGCCCCACAGGACTCCTCGGCCCTCTCAAGGAGGGCGGAGCTCCAGCCT  
 CAGGCAGCCATCGGGTACTCAGTGGGACTGCCCAAAAGACCCTCGGCAGCAGGCATGGTCCCCCAGGT  
 GCCAGGAGAGATTTGCGGCGTGGGCCACCCTCGTTTTCCAAACGCCTCCACCAGGAACGTGGTCTTC  
 CTCAGCCCTGGTTTCGTCACTGCCCTGCGAGCCCTGTCTTCTGCAGCTGGTCCGCACGGCCTCCGGCC  
 GCCTGGGCACCCTCCTGTCTACGCCACCAGGACAATGACAACAAGCTGGTGTGCACGGCCGAGACTC  
 CCTGTGCCCGGATCCATCCACTTCGTGATCGGGGACCCGGCCTTCAGGGAGTGCCTTGCAGCTGCTG  
 CTGGACGGCCAGTGGCACCATCTGTGTATCTGGACGTCCACCAGGGCAGGTACTGGCTCCACGTGG  
 ATCGCAGGCTGGTGGCCACCGGCTCCCGCTTCAGGGAGGCTATGAGATCCCCCGGAGGCTCCCTCGT  
 GCTGGGCCAGGAACAAGACAGCGTGGGGGCGGATTCGACAGCTCCGAGGCCTTCGTGGGAGCATGCT  
 GGCTTGGCTATCTGGGATCGGGCCTGGTCCCGGGAAGTTGCAAACCTTGCCATCGGGAAGAGTTCC  
 CGACAGGTGCCATCCTGACGCTGGCCAATGCTGCACTAGCAGCGGATTTGTGCAGGGGGCAACTGCAC  
 CTGCTGGAACGCTGTCCC

**ACGCGT**ACGCGGCCGCTCGAGCAGAACTCATCTCAGAAGAGGATCTGGCAGCAATGATATCCTGGATT  
 ACAAGGATGACGACGATAAGGTTTAA

**Protein Sequence:**

>RC214092 representing NM\_001013658  
 Red=Cloning site Green=Tags(s)

MGSGNWEVTGPPCGSRCERPPGLPRGVHQFRSAVGLSGLRWFRRFQEVTWHLQNIASNYNVSYNVDVR  
 FRSLAEESQAVAQAVNRSQASVQGELAQLKAWVRKLRGRKVDTRLRALDLTLGERSQQRARERKAHKA  
 QRDALQDRLARLEGLVHSQGARLAALRGLPVAHPGTAALGPALVPTPTQPEELGPTSLKLRDRQELRA  
 ASEHRGPPQDSSAPLQGRREPPASGSHRVLSGTAPKDPQQAWSPQVPGEICGVGPTLVFPNASTRNVVF  
 LSPGFVTALRALSFCSWVRTASGRLGTLTLYATEDNDNKLVLHGRDSSLPGSIHFVIGDPAFRELPLQLL  
 LDGQWHHICVIWSTQGRYWLHVDRLVATGSRFREGYEIPPGGSLVLGQEQDSVGGGDFSSEAFVGSMS  
 GLAIWDRALVPGEVANLAIGKEFPTGAILTLANAALAGGFVQGANCTCLERCP

**TR**TRPLEQKLISEEDLAANDILDYKDDDDKV

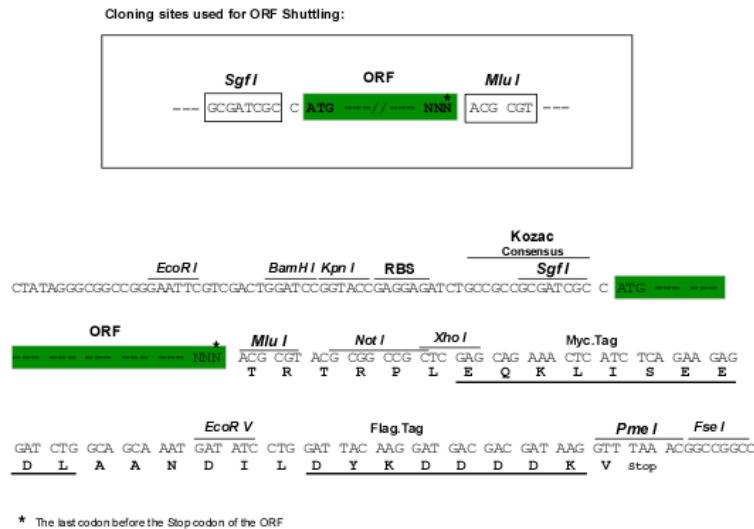
**Chromatograms:**

[https://cdn.origene.com/chromatograms/mk8029\\_c02.zip](https://cdn.origene.com/chromatograms/mk8029_c02.zip)

**Restriction Sites:**

Sgfl-MluI

## Cloning Scheme:



ACCN: NM\_001013658

ORF Size: 1419 bp

OTI Disclaimer: The molecular sequence of this clone aligns with the gene accession number as a point of reference only. However, individual transcript sequences of the same gene can differ through naturally occurring variations (e.g. polymorphisms), each with its own valid existence. This clone is substantially in agreement with the reference, but a complete review of all prevailing variants is recommended prior to use. [More info](#)

OTI Annotation: This clone was engineered to express the complete ORF with an expression tag. Expression varies depending on the nature of the gene.

Components: The ORF clone is ion-exchange column purified and shipped in a 2D barcoded Matrix tube containing 10ug of transfection-ready, dried plasmid DNA (reconstitute with 100 ul of water).

Reconstitution Method:

1. Centrifuge at 5,000xg for 5min.
2. Carefully open the tube and add 100ul of sterile water to dissolve the DNA.
3. Close the tube and incubate for 10 minutes at room temperature.
4. Briefly vortex the tube and then do a quick spin (less than 5000xg) to concentrate the liquid at the bottom.
5. Store the suspended plasmid at -20°C. The DNA is stable for at least one year from date of shipping when stored at -20°C.

RefSeq: [NM\\_001013658.1](#), [NP\\_001013680.1](#)

RefSeq Size: 1422 bp

RefSeq ORF: 1422 bp

Locus ID: 390667

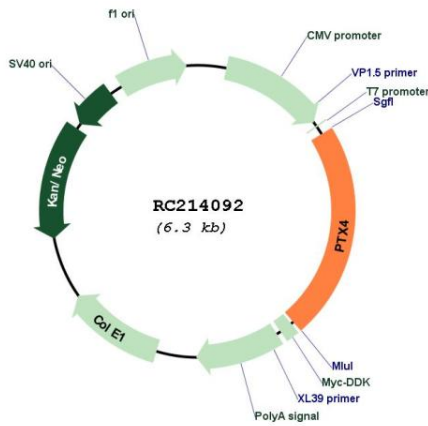
UniProt ID: [Q96A99](#)

Cytogenetics: 16p13.3

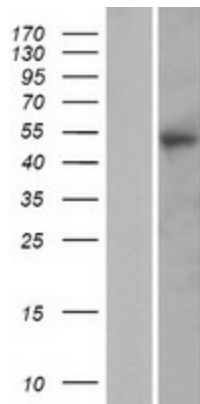
**MW:** 51.1 kDa

**Gene Summary:** This gene belongs to the pentraxin superfamily, whose members encode highly conserved multifunctional proteins. The encoded protein, like other members of this family, contains a conserved pentraxin domain at the C-terminus. The highest levels of expression of the protein were observed in bone marrow, small intestine and testes. [provided by RefSeq, Jun 2016]

**Product images:**



Circular map for RC214092



Western blot validation of overexpression lysate (Cat# [LY423007]) using anti-DDK antibody (Cat# [TA50011-100]). Left: Cell lysates from untransfected HEK293T cells; Right: Cell lysates from HEK293T cells transfected with RC214092 using transfection reagent MegaTran 2.0 (Cat# [TT210002]).