

Product datasheet for RC214088

AARD (NM_001025357) Human Tagged ORF Clone

Product data:

Product Type: Expression Plasmids
Product Name: AARD (NM_001025357) Human Tagged ORF Clone
Tag: Myc-DDK
Symbol: AARD
Synonyms: C8orf85
Mammalian Cell Selection: Neomycin
Vector: pCMV6-Entry (PS100001)
E. coli Selection: Kanamycin (25 ug/mL)
ORF Nucleotide Sequence: >RC214088 representing NM_001025357
 Red=Cloning site Blue=ORF Green=Tags(s)

TTTTGTAATACGACTCACTATAGGGCGGCCGGAATTCGTCGACTGGATCCGGTACCGAGGAGATCTGCC
GCC**CGGATCGCC**

ATGGGCCCCGGGGACTTCCGCCGCTGCAGAGAGAATTTCCAGGGGCTCCAGGGACTCCAGGTAGAG
CGGAGCTTTGGTCCCACCTCGTCCCGCTGCGACTTCTTCGGGGACGGCAGGAGCACGGACATCCAGGA
GGAGGCCCTCGCCGACCCGCTGCTGGAGGACCTCAGACGACGGCTGACGCGGCCTTCCAGTGGGCG
GTGCAGCGCGGATCTCGAGGCGGTGCAGGAGCGCGCGGGCGGGCGGGGAGGAGCAGAGCT
GGACGGGCGTTGAGGCCACCTGGCCAGGCTGCGGGCGGAGCTGGTGAAATGCATTTCCAAAACCA
GCTGGCTAGAAGTTACTGGACCTAAACATGAAAGTGCAGCAATTGAAAAAGGAGTATGAACTGAAATT
ACATCAGACTCCCAAAGCCAAAAGATGATGCTGCGAATCCGGAA

ACGCGTACGCGGCCGCTCGAGCAGAACTCATCTCAGAAGAGGATCTGGCAGCAAATGATATCCTGGATT
ACAAGGATGACGACGATAAGGTTTAA

Protein Sequence: >RC214088 representing NM_001025357
 Red=Cloning site Green=Tags(s)
 MGPGRFRRCRERISQGLQGLPGRAELWFP RPACDFFGDGRSTDIQEEALAA SPLLEDLRRRLTRAFQWA
 VQRAISR RVQEA AAAAAAREEQSWTGV EATLARLRAELVEMHFQNHQLARTLLDLN MKVQQLKKEYELEI
 TSDSQSPKDDAANPE

TRTRPLEQKLISEEDLAANDILDYKDDDDKV

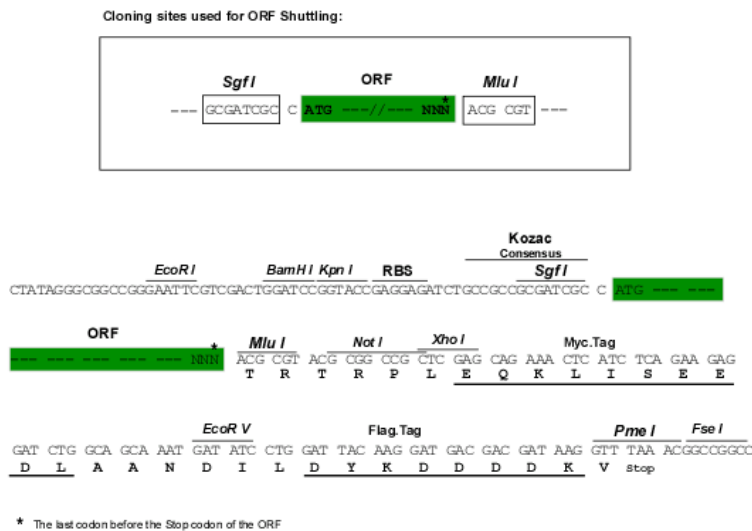
Chromatograms: https://cdn.origene.com/chromatograms/mk8029_d04.zip



[View online »](#)

Restriction Sites: SgfI-MluI

Cloning Scheme:



ACCN: NM_001025357

ORF Size: 465 bp

OTI Disclaimer: The molecular sequence of this clone aligns with the gene accession number as a point of reference only. However, individual transcript sequences of the same gene can differ through naturally occurring variations (e.g. polymorphisms), each with its own valid existence. This clone is substantially in agreement with the reference, but a complete review of all prevailing variants is recommended prior to use. [More info](#)

OTI Annotation: This clone was engineered to express the complete ORF with an expression tag. Expression varies depending on the nature of the gene.

Components: The ORF clone is ion-exchange column purified and shipped in a 2D barcoded Matrix tube containing 10ug of transfection-ready, dried plasmid DNA (reconstitute with 100 ul of water).

Reconstitution Method:

1. Centrifuge at 5,000xg for 5min.
2. Carefully open the tube and add 100ul of sterile water to dissolve the DNA.
3. Close the tube and incubate for 10 minutes at room temperature.
4. Briefly vortex the tube and then do a quick spin (less than 5000xg) to concentrate the liquid at the bottom.
5. Store the suspended plasmid at -20°C. The DNA is stable for at least one year from date of shipping when stored at -20°C.

RefSeq: [NM_001025357.3](#)

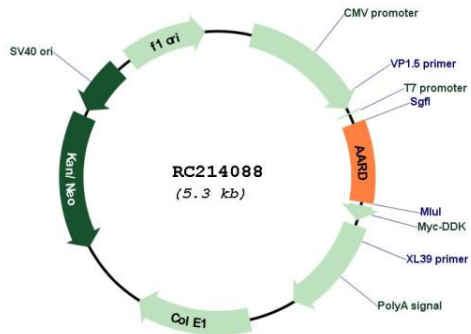
RefSeq Size: 751 bp

RefSeq ORF: 468 bp

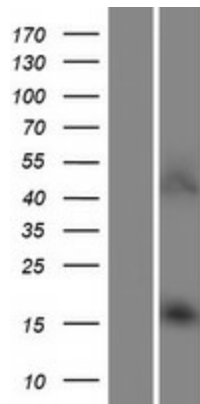
Locus ID: 441376

UniProt ID: [Q4LEZ3](#)
 Cytogenetics: 8q24.11
 MW: 17.4 kDa

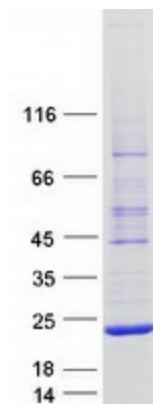
Product images:



Circular map for RC214088



Western blot validation of overexpression lysate (Cat# [LY422434]) using anti-DDK antibody (Cat# [TA50011-100]). Left: Cell lysates from untransfected HEK293T cells; Right: Cell lysates from HEK293T cells transfected with RC214088 using transfection reagent MegaTran 2.0 (Cat# [TT210002]).



Coomassie blue staining of purified AARD protein (Cat# [TP314088]). The protein was produced from HEK293T cells transfected with AARD cDNA clone (Cat# RC214088) using MegaTran 2.0 (Cat# [TT210002]).

