

## Product datasheet for **RC214086**

### PPP2R2C (NM\_181876) Human Tagged ORF Clone

#### Product data:

Product Type:	Expression Plasmids
Product Name:	PPP2R2C (NM_181876) Human Tagged ORF Clone
Tag:	Myc-DDK
Symbol:	PPP2R2C
Synonyms:	B55-GAMMA; B55gamma; IMYPNO; IMYPNO1; PR52; PR55G
Mammalian Cell Selection:	Neomycin
Vector:	pCMV6-Entry (PS100001)
E. coli Selection:	Kanamycin (25 ug/mL)



[View online »](#)

**ORF Nucleotide Sequence:**

>RC214086 representing NM\_181876  
 Red=Cloning site Blue=ORF Green=Tags(s)

TTTTGTAATACGACTCACTATAGGGCGGCCGGAATTCGTCGACTGGATCCGGTACCGAGGAGATCTGCC  
 GCC**GCGATCGCC**

ATGGGGCTGTCTTTTTCTCAAACACTTGCCCATCCAGGAAGGCCAGCCCTGGGCATTGAAGACTCCAG  
 CTGACATCATCTTACCCTTGTAGTTCAACCACACGGGAGAGCTGCTGGCCACAGGTGACAAGGGCGGCCG  
 GGTCGTCATCTTCCAGCGGGAACAGAGAGTAAAAATGCGCCCAACAGCCAGGGCGAATACGACGTGTAC  
 AGCACTTCCAGAGCCACGAGCCGGAGTTTACTATCTCAAGAGCCTGGAGATAGAGGAGAAGATCAACA  
 AGATCAAGTGGCTCCACAGCAGAACGCCGCCACTACTCTGTCCACCAACGATAAACTATCAAATT  
 ATGGAAGATTACCGAACGAGATAAAAGGCCGAAGGATACAACCTGAAGGATGAAGAGGGGAACTTAAG  
 GACCTGTCCAGGTGACGTCCTGCAGGTGCCAGTGTGAAGCCATGGATCTGATGGTGGAGGTGAGCC  
 CTCGGAGGATCTTGCCAATGGCCACACCTACCACATCAACTCCATCTCCGTCAACAGTGACTGCGAGAC  
 CTACATGTGGCGGATGACCTGCGCATCAACCTCTGGCACCTGGCCATCACCGACAGGAGCTTCAACATC  
 GTGGACATCAAGCCGGCCAAACATGGAGGACCTTACGGAGGTGATCACAGCATCTGAGTTCATCCGACC  
 ACTGCAACCTCTTCGTCTACAGCAGCAGCAAGGGCTCCCTGCGGCTCTGCGACATGCGGGCAGCTGCCCT  
 GTGTGACAAGCATTCCAAGCTCTTTGAAGAGCCTGAGGACCCAGTAACCGCTCATTCTTCTCGAAATC  
 ATCTCCTCCGTGTCCGACGTGAAGTTCAGCCACAGCGCCGCTACATGCTCACCCGGGACTACCTTACAG  
 TCAAGGTCTGGGACCTGAACATGGAGGCAAGACCCATAGAGACCTACCAGGTCCATGACTACCTTCGGAG  
 CAAGCTCTGTTCCCTGTACGAGAAGCAGTGCATTTTCGACAAGTTTGAATGTGCCTGGAACGGGAGCGAC  
 AGCGTCATCATGACCGGGCCTACAACAACCTTCTCCGCATGTTGATCGGAACCAAGCGGGACGTGA  
 CCCTGGAGCCCTCGAGGAAAGCAGCAAGCCCGGGCTGTGCTCAAGCCACGGCGGTGTGCTGGGGGG  
 CAAGCGCCGGCGTGTGACATCAGTGTGGACAGCTTGGACTTACCAAGAAGATCTGCACACGGCCTGG  
 CACCCGGCTGAGAACATCATTGCCATCGCCGCCACCAACAACCTGTACATCTTCCAGGACAAGGTAACCT  
 CTGACATGCAC

**ACGCGT**ACGCGGCCGCTCGAGCAGAACTCATCTCAGAAGAGGATCTGGCAGCAAATGATATCCTGGATT  
 ACAAGGATGACGACGATAAGGTTTAA

**Protein Sequence:**

>RC214086 representing NM\_181876  
 Red=Cloning site Green=Tags(s)

MGLSFFSKHLP IQEQPWALKTPADIISTVEFNHTGELLATGDKGGRVVIFQREPESKNAPHSQGEYDVY  
 STFQSHEPEFDYLSLEIEEKINKIKWLPQONAAHLLSTNDKTIKLWKITERDKRPEGYNLKDEEGKLLK  
 DLSTVTSLQVPVLPMDLMVEVSPRRIFANGHTYHINSISVNSDCETYMSADDLRINLWHLAITDRSFNI  
 VDIKPANMEDL TEVITASEFHPHCNLFVYSSKGLRLCDMRAAALCDKHSKLFEEPEPDSNRSSFSEI  
 ISSVSDVKF SHSGRYMLTRDYLTVKVDLNMEARPIETYQVHDYLRSKLCSLYENDCIFDKFECAWNGSD  
 SVIMTGAYNFFRMDRNTKRDVTLASRESSKPRAVLKPRRVCVGGKRRRDDISVDSLDFTKKILHTAW  
 HPAENIIAIAATNNLYIFQDKVNSDMH

**TR**TRPLEQKLISEEDLAANDILDYKDDDDKV

**Chromatograms:**

[https://cdn.origene.com/chromatograms/ja1141\\_e08.zip](https://cdn.origene.com/chromatograms/ja1141_e08.zip)

**Restriction Sites:**

Sgfl-Mlul

Cloning Scheme:



ACCN: NM\_181876

ORF Size: 1341 bp

OTI Disclaimer: The molecular sequence of this clone aligns with the gene accession number as a point of reference only. However, individual transcript sequences of the same gene can differ through naturally occurring variations (e.g. polymorphisms), each with its own valid existence. This clone is substantially in agreement with the reference, but a complete review of all prevailing variants is recommended prior to use. [More info](#)

OTI Annotation: This clone was engineered to express the complete ORF with an expression tag. Expression varies depending on the nature of the gene.

Components: The ORF clone is ion-exchange column purified and shipped in a 2D barcoded Matrix tube containing 10ug of transfection-ready, dried plasmid DNA (reconstitute with 100 ul of water).

Reconstitution Method:

1. Centrifuge at 5,000xg for 5min.
2. Carefully open the tube and add 100ul of sterile water to dissolve the DNA.
3. Close the tube and incubate for 10 minutes at room temperature.
4. Briefly vortex the tube and then do a quick spin (less than 5000xg) to concentrate the liquid at the bottom.
5. Store the suspended plasmid at -20°C. The DNA is stable for at least one year from date of shipping when stored at -20°C.

RefSeq: [NM\\_181876.3](#)

RefSeq Size: 4087 bp

RefSeq ORF: 1344 bp

Locus ID: 5522

UniProt ID: [Q9Y2T4](#)

Cytogenetics: 4p16.1

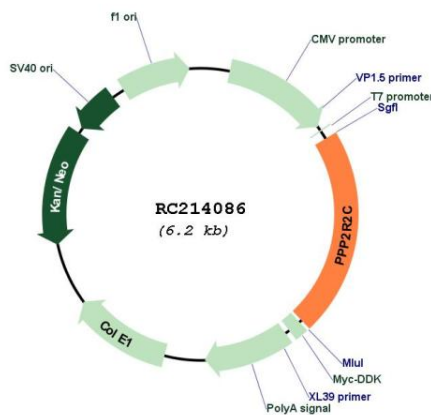
**Protein Families:** Druggable Genome, Phosphatase

**Protein Pathways:** Tight junction

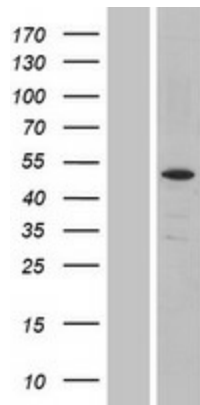
**MW:** 51.2 kDa

**Gene Summary:** The product of this gene belongs to the phosphatase 2 regulatory subunit B family. Protein phosphatase 2 is one of the four major Ser/Thr phosphatases, and it is implicated in the negative control of cell growth and division. It consists of a common heteromeric core enzyme, which is composed of a catalytic subunit and a constant regulatory subunit, that associates with a variety of regulatory subunits. The B regulatory subunit might modulate substrate selectivity and catalytic activity. This gene encodes a gamma isoform of the regulatory subunit B55 subfamily. Alternatively spliced transcript variants encoding different isoforms have been identified. [provided by RefSeq, Jul 2008]

**Product images:**



Circular map for RC214086



Western blot validation of overexpression lysate (Cat# [LY412468]) using anti-DDK antibody (Cat# [TA50011-100]). Left: Cell lysates from untransfected HEK293T cells; Right: Cell lysates from HEK293T cells transfected with [RC224154] using transfection reagent MegaTran 2.0 (Cat# [TT210002]).