

Product datasheet for **RC214085**

MHF1 (CENPS) (NM_198544) Human Tagged ORF Clone

Product data:

Product Type:	Expression Plasmids
Product Name:	MHF1 (CENPS) (NM_198544) Human Tagged ORF Clone
Tag:	Myc-DDK
Symbol:	MHF1
Synonyms:	APITD1; APITD1-CORT; CENP-S; CENPS; FAAP16; MHF1
Mammalian Cell Selection:	Neomycin
Vector:	pCMV6-Entry (PS100001)
E. coli Selection:	Kanamycin (25 ug/mL)
ORF Nucleotide Sequence:	>RC214085 representing NM_198544 Red=Cloning site Blue=ORF Green=Tags(s)

TTTTGTAATACGACTCACTATAGGGCGGCCGGAATTCGTCGACTGGATCCGGTACCGAGGAGATCTGCC
 GCC**CGATCGCC**

ATGGAGGAGGAGGCGGAGACCGAGGAGCAGCAGCGATTCTTTACCAACAGAGGCTAAAGGCAGCAGTTC
 ACTATACTGTGGTTGTCTTTGCGAGGAAGTTCATTGGACAAAGAGATGCAGTTCAGCAACAGACCAT
 TCGCGCCATTTTCGAGCTGACTTTCCGACAGTGTGAAAATTTGCCAAAGACCTTGAAATGTTTGCAAGA
 CATGCGAAAAGAACCACAATTAACACTGAAGATGTGAAGCTCTTAGCCAGGAGGAGTAATCACTGCATA
 TGCAGGAAGCGGCAGGAATAAGGAAAAGCAGCCTCCTGACTTTCTCGCTTGGTGGTTTGGTGGACCTC
 CCAGGCCAGTGCCGGGCCCTCATAGGAGAGGAAGCCCGGAGGTGGCCAGGCGGCAGGAAGGCGCACCC
 CCCCAGCAATCTGCGCGCCGGGACAGAATGCCCTGCAGGAACCTTCTTCTGAAGACCTTCTCCTCTGCA
 AA

ACGCGTACGCGGCCGCTCGAGCAGAACTCATCTCAGAAGAGGATCTGGCAGCAAATGATATCCTGGATT
 ACAAGGATGACGACGATAAGGTTTAA

Protein Sequence:	>RC214085 representing NM_198544 Red=Cloning site Green=Tags(s)
-------------------	--

MEEAEETEEQQRFSYQRLKAAVHYTVGCLCEEVALDKEMQFSKQTIAAISELTFRQCENFAKDLEMFAR
 HAKRTTINTEDVKLLARRSNSLHMQEAAGIRKSSLLTFLAWFEWTSQASAGPLIGEEAREVARRQEGAP
 PQSARRDRMPCRNFFWKTFSSCK

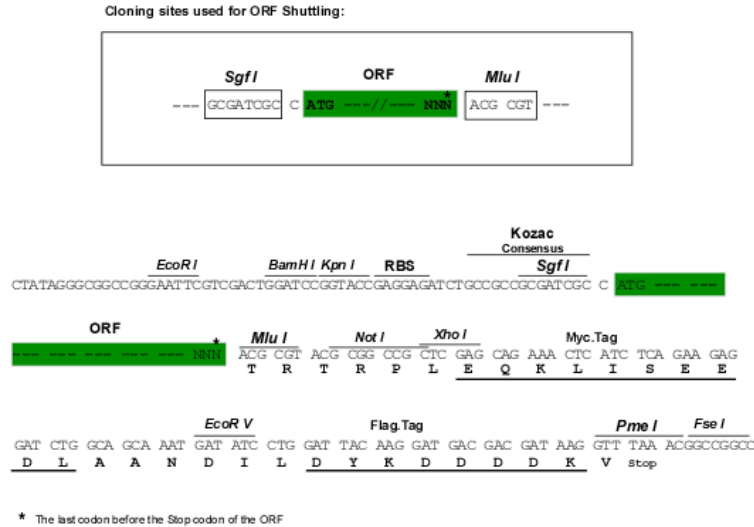
TRTRPLEQKLISEEDLAANDILDYKDDDDKV

Chromatograms:	https://cdn.origene.com/chromatograms/mk8029_d05.zip
----------------	---


[View online »](#)

Restriction Sites: SgfI-MluI

Cloning Scheme:



ACCN: NM_198544

ORF Size: 492 bp

OTI Disclaimer: The molecular sequence of this clone aligns with the gene accession number as a point of reference only. However, individual transcript sequences of the same gene can differ through naturally occurring variations (e.g. polymorphisms), each with its own valid existence. This clone is substantially in agreement with the reference, but a complete review of all prevailing variants is recommended prior to use. [More info](#)

OTI Annotation: This clone was engineered to express the complete ORF with an expression tag. Expression varies depending on the nature of the gene.

Components: The ORF clone is ion-exchange column purified and shipped in a 2D barcoded Matrix tube containing 10ug of transfection-ready, dried plasmid DNA (reconstitute with 100 ul of water).

Reconstitution Method:

1. Centrifuge at 5,000xg for 5min.
2. Carefully open the tube and add 100ul of sterile water to dissolve the DNA.
3. Close the tube and incubate for 10 minutes at room temperature.
4. Briefly vortex the tube and then do a quick spin (less than 5000xg) to concentrate the liquid at the bottom.
5. Store the suspended plasmid at -20°C. The DNA is stable for at least one year from date of shipping when stored at -20°C.

Note: Plasmids are not sterile. For experiments where strict sterility is required, filtration with 0.22um filter is required.

RefSeq: [NM_198544.4](#)

RefSeq Size: 1469 bp

RefSeq ORF: 495 bp

Locus ID: 100526739

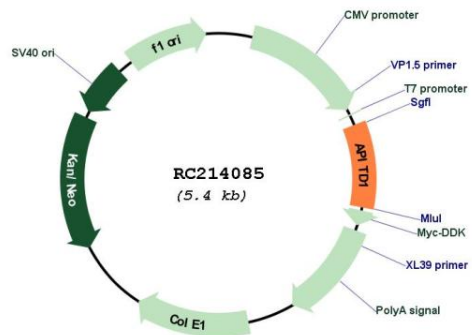
UniProt ID: [Q8N2Z9](#)

Cytogenetics: 1p36.22

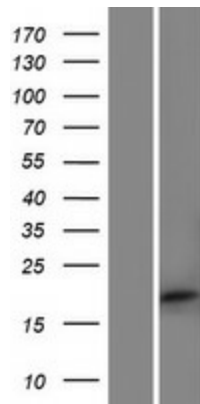
MW: 18.9 kDa

Gene Summary: This locus represents naturally occurring read-through transcription between the neighboring APITD1 (apoptosis-inducing, TAF9-like domain 1) and CORT (cortistatin) genes. Alternative splicing results in multiple transcript variants, two of which encode fusion proteins that share sequence identity with the products of each individual gene. [provided by RefSeq, Aug 2011]

Product images:



Circular map for RC214085



Western blot validation of overexpression lysate (Cat# [LY404846]) using anti-DDK antibody (Cat# [TA50011-100]). Left: Cell lysates from untransfected HEK293T cells; Right: Cell lysates from HEK293T cells transfected with RC214085 using transfection reagent MegaTran 2.0 (Cat# [TT210002]).