

Product datasheet for **RC214084**

NCR2 (NM_004828) Human Tagged ORF Clone

Product data:

Product Type:	Expression Plasmids
Product Name:	NCR2 (NM_004828) Human Tagged ORF Clone
Tag:	Myc-DDK
Symbol:	NCR2
Synonyms:	CD336; dj149M18.1; LY95; NK-p44; NKP44
Mammalian Cell Selection:	Neomycin
Vector:	pCMV6-Entry (PS100001)
E. coli Selection:	Kanamycin (25 ug/mL)
ORF Nucleotide Sequence:	>RC214084 representing NM_004828 Red=Cloning site Blue=ORF Green=Tags(s)

TTTTGTAATACGACTCACTATAGGGCGGCCGGAATTCGTCGACTGGATCCGGTACCGAGGAGATCTGCC
GCC**CGATCGCC**

ATGGCCTGGCGAGCCCTACACCCACTGCTACTGCTGCTGCTGCTGTTCCAGGCTCTCAGGCACAATCCA
AGGCTCAGGTACTCAAAGTGTGGCAGGGCAGACGCTAACCGTGAGATGCCAGTACCCGCCACGGGCAG
TCTCTACGAGAAGAAAGGCTGGTGAAGGAGGCTTCAGCACTTGTGTGCATCAGGTTAGTACCAGCTCC
AAGCCCAGGACGATGGCTTGGACCTCTCGATTCAATCTGGGACGACCCTGATGCTGGCTTCTTCACTG
TCACCATGACTGATCTGAGAGAGGAAGACTCAGGACATTACTGGTGTAGAATCTACCGCCCTTCTGACAA
CTCTGTCTCTAAGTCCGTCAGATTCTATCTGGTGGTATCTCCAGCCTCTGCCTCCACACAGACCCCTGG
ACTCCCCGCGACCTGGTCTCTTACAGACCCAGACCCAGAGCTGTGTGCCTCCCACTGCAGGAGCCAGAC
AAGCCCTGAGTCTCCATCTACCATCCCTGTCCCTTACAGCCACAGAATCCACGCTCCGCCCTGGCCC
TGCAGCCCCCAATTGCCCTGGTGCCTGTGTTCTGTGGACTCCTCGTAGCCAAGAGCCTGGTGTGTGACCC
CTGCTCGTCTGGTGGGGGACATATGGTGGAAAACCGTGATGGAGCTCAGGAGCCTGGATACCAAAAAG
CCACCTGCCACCTCAACAGGTCACGGACCTTCCCTGGACCTCAGTTTCTCACCTGTAGAGAGAGAAAT
ATTATATCACACTGTTGCAAGGACTAAGATAAGCGATGATGATGATGAACACACTTG

ACGCGTACGCGGCCGCTCGAGCAGAAACTCATCTCAGAAGAGGATCTGGCAGCAAATGATATCCTGGATT
ACAAGGATGACGACGATAAGGTTTAA



[View online »](#)

Protein Sequence: >RC214084 representing NM_004828
 Red=Cloning site Green=Tags(s)

MAWRALHPLLLLLLFPGSQAQSKAQVLQSVAGQTLTVRCQPPTGSLYEKKGWCKEASALVCIRLVTSS
 KPRTMAWTSRFTIWDPPDAGFFVTMTDLREEDSGHYWCRIYRPSDNVSKSVRFYLVVSPASASTQTPW
 TPRDLVSSQTQTQSCVPPTAGARQAPESPSTIPVPSQPQNSTLRPGAAPIALVPVFCGLLVAKSLVLSA
 LLVWVGDIWWKTVMELRSLDTQKATCHLQQVTDLPWTSVSSPVEREILYHTVARTKISDDDDDEHTL

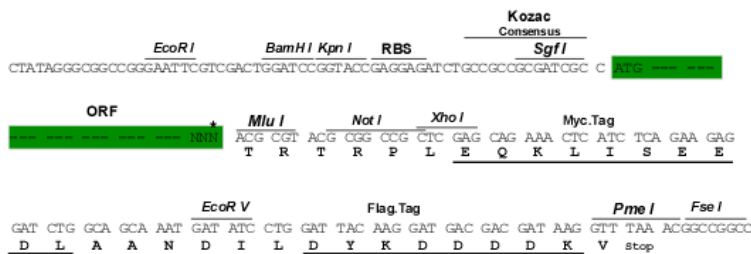
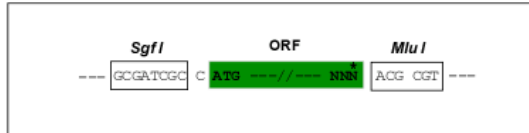
TRTRPLEQKLISEEDLAANDILDYKDDDDKV

Chromatograms: https://cdn.origene.com/chromatograms/mk6099_e07.zip

Restriction Sites: SgfI-MluI

Cloning Scheme:

Cloning sites used for ORF Shuttling:



* The last codon before the Stop codon of the ORF

ACCN: NM_004828

ORF Size: 828 bp

OTI Disclaimer: The molecular sequence of this clone aligns with the gene accession number as a point of reference only. However, individual transcript sequences of the same gene can differ through naturally occurring variations (e.g. polymorphisms), each with its own valid existence. This clone is substantially in agreement with the reference, but a complete review of all prevailing variants is recommended prior to use. [More info](#)

OTI Annotation: This clone was engineered to express the complete ORF with an expression tag. Expression varies depending on the nature of the gene.

Components: The ORF clone is ion-exchange column purified and shipped in a 2D barcoded Matrix tube containing 10ug of transfection-ready, dried plasmid DNA (reconstitute with 100 ul of water).

Reconstitution Method:

1. Centrifuge at 5,000xg for 5min.
2. Carefully open the tube and add 100ul of sterile water to dissolve the DNA.
3. Close the tube and incubate for 10 minutes at room temperature.
4. Briefly vortex the tube and then do a quick spin (less than 5000xg) to concentrate the liquid at the bottom.
5. Store the suspended plasmid at -20°C. The DNA is stable for at least one year from date of shipping when stored at -20°C.

RefSeq: [NM_004828.2](#), [NP_004819.1](#)

RefSeq Size: 932 bp

RefSeq ORF: 831 bp

Locus ID: 9436

UniProt ID: [O95944](#)

Cytogenetics: 6p21.1

Domains: IG

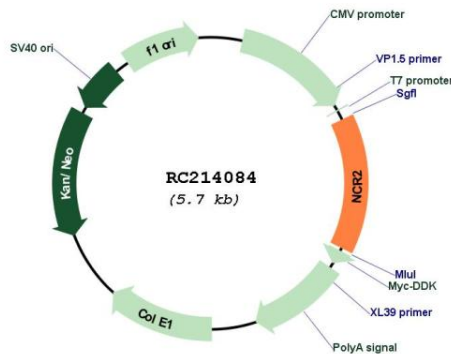
Protein Families: Druggable Genome, Transmembrane

Protein Pathways: Natural killer cell mediated cytotoxicity

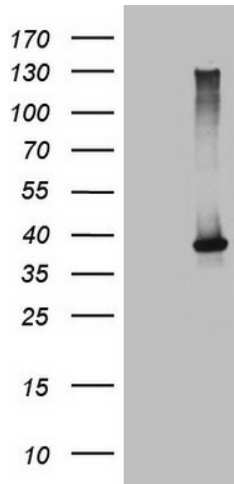
MW: 30.5 kDa

Gene Summary: Cytotoxicity-activating receptor that may contribute to the increased efficiency of activated natural killer (NK) cells to mediate tumor cell lysis.[UniProtKB/Swiss-Prot Function]

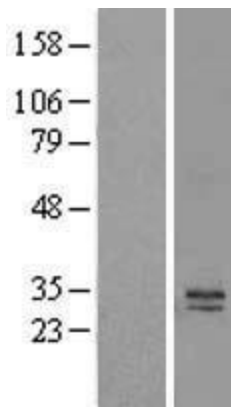
Product images:



Circular map for RC214084



HEK293T cells were transfected with the pCMV6-ENTRY control (Cat# [PS100001], Left lane) or pCMV6-ENTRY NCR2 (Cat# RC214084, Right lane) cDNA for 48 hrs and lysed. Equivalent amounts of cell lysates (5 ug per lane) were separated by SDS-PAGE and immunoblotted with anti-NCR2 (Cat# [TA809536])(1:2000). Positive lysates [LY417716] (100ug) and [LC417716] (20ug) can be purchased separately from OriGene.



Western blot validation of overexpression lysate (Cat# [LY417716]) using anti-DDK antibody (Cat# [TA50011-100]). Left: Cell lysates from untransfected HEK293T cells; Right: Cell lysates from HEK293T cells transfected with RC214084 using transfection reagent MegaTran 2.0 (Cat# [TT210002]).



Coomassie blue staining of purified NCR2 protein (Cat# [TP314084]). The protein was produced from HEK293T cells transfected with NCR2 cDNA clone (Cat# RC214084) using MegaTran 2.0 (Cat# [TT210002]).