

Product datasheet for RC214078

SLC12A6 (NM_001042494) Human Tagged ORF Clone

Product data:

Product Type:	Expression Plasmids
Product Name:	SLC12A6 (NM_001042494) Human Tagged ORF Clone
Tag:	Myc-DDK
Symbol:	SLC12A6
Synonyms:	ACCPN; KCC3; KCC3A; KCC3B
Mammalian Cell Selection:	Neomycin
Vector:	pCMV6-Entry (PS100001)
E. coli Selection:	Kanamycin (25 ug/mL)
ORF Nucleotide Sequence:	>RC214078 ORF sequence Red=Cloning site Blue=ORF Green=Tags(s)

TTTTGTAATACGACTCACTATAGGGCGGCCGGAATTCGTCGACTGGATCCGGTACCGAGGAGATCTGCC
GCC**CGATCGCC**

ATGAGTGAGATGTCTGGGGCCACCACTTCGCTGGCAACTGTTGCACTGGATCCACCCAGTGACCGGACTT
CTCACCCCGAGGATGTCATCGAGGACCTGAGTCAGAACTCCATCACAGGGGAACACAGCCAACTGTTAGA
CGACGGACATAAGAAAGCTCGAAATGCTTATCTCAATAATTCCAATTATGAAGAAGGAGATGAATATTTT
GATAAAAAATTTGGCACTCTTTGAGGAAGAAATGGACACCAGACCGAAGGTGTCTTCCCTCCTCAACCGCA
TGGCCAATTACACTAATCTGACTCAAGGAGCAAAGGAACATGAAGAGGCAGAAAACATCACTGAAGGGAA
AAAGAAGCCACCAAGACCCCCAAATGGGTACCTTCATGGGTGTCTACCCCATGTCTACAAAATATT
TTTGGAGTGATCCTTTTTTACGCCTTACATGGGTGGTGGGCACAGCTGGAGTTCTTCAGCTTTTGCAA
TTGTCTTATCTGCTGCTGTACAATGTTGACTGCTATCTCCATGAGTGCCATTGCCACTAATGGAGT
GGTGCCAGCTGGGGGCTCATACTTTATGATTTCCCGGGCACTGGGCCAGAGTTTGGTGGGGCTGTTGGC
CTCTGCTTTTATCTTGGTACCACATTTGCAGCAGCCATGTACATCCTTGGTGCCATTGAAATCTTTCTGG
TCTATATCGTCCCCGAGCTGCCATCTTCACAGTGATGACGCACTCAAGGAATCAGCAGCCATGCTAAA
TAACATGCGTGTCTACGGCACAGCTTTCTTGGTCTTATGGTATTAGTGGTATTTATCGGCGTACGCTAT
GTGAACAAGTTTGCCTCACTTTTCTGGCCTGTGTCATTGTGTCATCTTGCCATCTTGCCATCTATGCTGGAGCCA
TCAAGTCTTCTTTGCTCCTCCACACTTCCCGGTCTGCATGCTGGGTAACCGCACCTTTTCATCAAGACA
CATTGACGTTTGTCTAAGACCAAGGAAATTAACAACATGACAGTCCCATCAAAGTTATGGGATTCTTC
TGTAACCTCGAGTCAATTTTTCAATGCCACCTGTGATGAATACTTTGTTACAATAACGCTCACTTCAATCC
AGGGCATTCTGGATTGGCTAGTGGTATAATTACAGAGAATCTTTGGAGTAATTACCTACCCAAGGGAGA
GATCATCGAAAAGCCTTCAGCCAAATCTTCTGATGTCTTAGGCAGCTTAAACCATGAATATGTTCTTGT
GACATCACCACTCCTTCAGCTTCTGGTGGGAATCTTCTTCCCTCTGTTACAGGTATCATGGCTGGAT
CAAACAGATCTGGAGATCTGAAAGATGCTCAGAAGTCTATTCCGATTGGTACTATCCTTGCCATCCTGAC
CACCTCCTTTGTTATTTAAGCAATGTTGTCCTTTTGGTGCATGTATTGAAGGGTTGTTCTCAGAGAC



[View online >](#)

AAGTTCGGTGATGCTGTGAAAGGTAATTTGGTGGTAGGCACCTTATCTTGCCATCCCCATGGGTGATTG
 TTATTGGCTCCTTCTTTCAACATGTGGGGCTGGACTTCAGAGCCTCACAGGTGCACCGAGGCTGTACA
 AGCTATTGCCAAGGATAACATCATACCGTTTCTGAGGGTTTTGGCCACAGCAAAGCCAATGGGGAACCT
 ACCTGGGCTTTACTTCTAACTGCTGCCATTGCAGAGCTTGAATACTCATTGCCTCCCTGGATCTTGTGG
 CCCCAATTCTTTCCATGTTTTTCTCATGTGTTACCTCTTTGAAACTTGGCATGTGCCTTGCAAACATT
 ACTTCGAACACCCAACCTGGAGACCCCGATTCCGCTACTACCATTGGGCCCTTTCTTTATGGGAATGAGT
 ATCTGTCTGGCTCTGATGTTTCTTTCTCTGGTATTATGCCATTGTAGCCATGGTAATAGCTGGTATGA
 TCTACAAGTACATTGAATACCAAGGAGCTGAGAAAGAATGGGGTGATGGTATCCGTGGGCTGCCCTCAG
 TGCAGCCCGTTTTGCTTTGCTTCGATTGGAGGAAGGACCTCCACACACTAAAACTGGAGGCCTCAGTTG
 CTTGTATTACTGAAACTAGATGAAGACTTACATGTCAAGCATCCTCGCCTCCTCACCTTTGCCTCACAGC
 TCAAAGCAGGAAAAGGTCTCACTATTGTGGGCTGTGCATCGTGGGGAACCTCCTAGAGAACTACGGTGA
 AGCTTTAGCTGCTGAGCAGACCATAAAGCACCTAATGGAGGCAGAGAAGGAAAAGGATTCTGCCAGCTG
 GTGGTGGCCGCAAGCTGAGAGAGGGCATTCCACCTCATCCAGTCATGTGGCCTTGGGGGCATGAAGC
 ACAACACGGTGGTATGGGCTGGCCTAATGGCTGGCGTCAAAGCGAAGATGCCCGCCTTGAAGACTTT
 TATTGGCACAGTTCGAGTGACAACCTGCTGCCATCTTGCCTGCTGGTGGCTAAAAACATCTCCTCTTT
 CCCAGCAATGTGGAGCAATTTCTGAGGGCAACATTGATGTGTGGTGGATTGTGCATGATGGGGGATGC
 TTATGCTACTACCATTCTACTGAAACAGCACAAGGTGTGGCGAAAGTGCAGCATACGGATCTTACAGT
 AGCCCAATTAGAAGACAACAGTATCAAATGAAGAAGGACCTAGCCACCTTCTATATCACTTACGCATT
 GAGGCGGAGGTAGAAGTGGTGGAGATGCATGACAGTGATATCAGCATATACTTACGAGCGCACTTTGA
 TGATGGAACAAAGGTCCCAGATGCTTCGGCACATGCGGCTATCCAAAACAGAGCGGAGACAGAGAGGCACA
 ATTGGTGAAGACCGAAACTCAATGCTACGATTGACCAGCATTGGCTCTGATGAGGACGAAGAGACAGAA
 ACCTATCAGGAGAAGGTGCATGACTTGGACAAAAGACAAGTACATGGCATCCCGGGGACAAAAAGCGA
 AGTCAATGGAAGGATCCAGGACCTGCTTAACATGCGTCCGACCAGTCCAATGTGAGGCGCAATGATGCA
 AGCAGTGAAACTCAACGAGGTTATAGTTAACAAGTCCCATGAAGCAAAGCTGGTTTTATTGAATATGCCA
 GGGCCACCCGAAACCCTGAGGGTATGAAAACACTACATGGAGTTCCTAGAGGTGCTTACCAGGGACTAG
 AGCGAGTCTACTTGTCCGGGGTGGTGGCAGTGAAGTATCACCATTATTCA

ACGCGTACGCGGCCGCTCGAGCAGAACTCATCTCAGAAGAGGATCTGGCAGCAATGATATCCTGGATT
 ACAAGGATGACGACGATAAGGTTTAA

Protein Sequence:

>RC214078 protein sequence
 Red=Cloning site Green=Tags(s)

MSEMSGATTSLATVALDPPSDRTSHPQDVIEDLSQNSITGEHSQLLDDGHKKARNAYLNNSNYEEGDEYF
 DKNLALFEEEMDRPKVSSLLNRMANYTNLTQGAKEHEEAENITEGKKPKTKTPQMGTFMGVYPPCLQNI
 FGVILFLRLTWVGTAGVLQAFIVLICCCCTMLTAISMSAIATNGVVPAGGSYFMISRALGPEFFGGAVG
 LCFYLGTTFAAAMYILGAIIEIFLVYIVPRAAIFHSDALKESAAMLNMRVYGTAFVLMVLVVFIVRVY
 VNKFASLFLACVIVSILAIYAGAIKSSFPAPPFPVCMLGNRTLSSRHIDVCSKTKEINNMTVPSKLVGFF
 CNSSQFFNATCDEYFVHNNVTSIQGIPGLASGIITENLWSNYLPKGEIIEKPSAKSSDVLGSLNHEYVLV
 DITTSFTLLVGFIFPSVTGIMAGSNRSGDLKDAQSIPIGTILAILTTSFYVLSNVVLFACIEGVVLRD
 KFGDAVGNLWVGTLSWSPSPWVIVIGSFFSTCGAGLQSLTGAPRLLQAIKDNIIIPFLRVFGHSHKANGEP
 TWALLLTAIAELGILIASLDLVAPILSMFFLMCYLNVNLACALQTLRLTPNWRPRFRYYHWALSFMGMS
 ICLALMFISSWYAIIVAMVIAGMIYKYIEYQGAKEWGDGIRGLSLSAARFALLRLEEGPPHTKNWRPQL
 LVLLKLDLHVKHPRLLTFASQLKAGKGLTIVGSVIVGNFLENYGEALAAEQTIKHLMEAEKVKGFQCL
 VVAAKLREGISHLIQSCGLGGMKHNTVVMGWPNWQRQSEDARAWKTFIGTVRVTTAAHLALLVAKNISFF
 PSNVEQFSEGNIDVWVI VHDGMLMLLPFLKQHKVWRKCSIRIFTVAQLEDNSIQMKKDLATFLYHLRI
 EAEVEVEMHDSISAYTYERTLMMEQRSQMLRHMRLSKTERDREAQLVKDRNSMLRLTSGSDEDEETE
 TYQEKVHMTWTKDKYMASRGQKAKSMGFQDLLNMRPDQSNVRRMHTAVKLNNEVI VNKSHAKLVLLNMP
 GPPRNPEGDENYMEFLEVLTEGLERVLLVRGGGSEVITIIYS

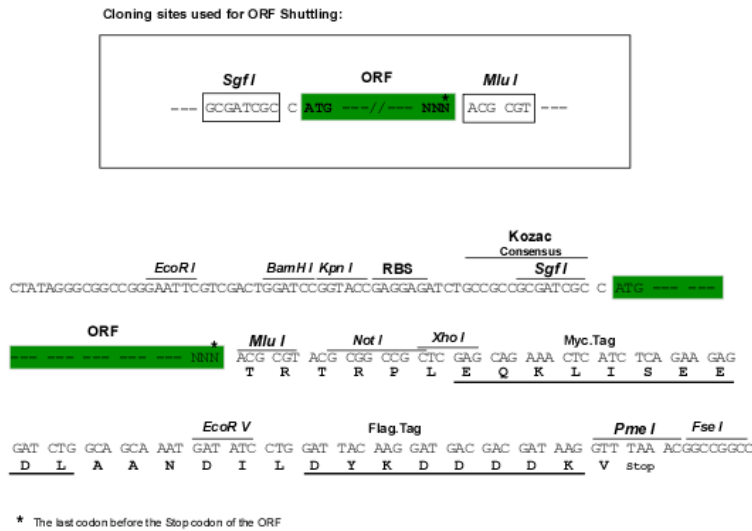
TRTRPLEQKLI SEEDLAANDILDYKDDDDKV

Chromatograms:

https://cdn.origene.com/chromatograms/mk6680_f01.zip

Restriction Sites: SgfI-MluI

Cloning Scheme:



ACCN: NM_001042494

ORF Size: 3273 bp

OTI Disclaimer: The molecular sequence of this clone aligns with the gene accession number as a point of reference only. However, individual transcript sequences of the same gene can differ through naturally occurring variations (e.g. polymorphisms), each with its own valid existence. This clone is substantially in agreement with the reference, but a complete review of all prevailing variants is recommended prior to use. [More info](#)

OTI Annotation: This clone was engineered to express the complete ORF with an expression tag. Expression varies depending on the nature of the gene.

Components: The ORF clone is ion-exchange column purified and shipped in a 2D barcoded Matrix tube containing 10ug of transfection-ready, dried plasmid DNA (reconstitute with 100 ul of water).

Reconstitution Method:

1. Centrifuge at 5,000xg for 5min.
2. Carefully open the tube and add 100ul of sterile water to dissolve the DNA.
3. Close the tube and incubate for 10 minutes at room temperature.
4. Briefly vortex the tube and then do a quick spin (less than 5000xg) to concentrate the liquid at the bottom.
5. Store the suspended plasmid at -20°C. The DNA is stable for at least one year from date of shipping when stored at -20°C.

RefSeq: [NM_001042494.1](#), [NP_001035959.1](#)

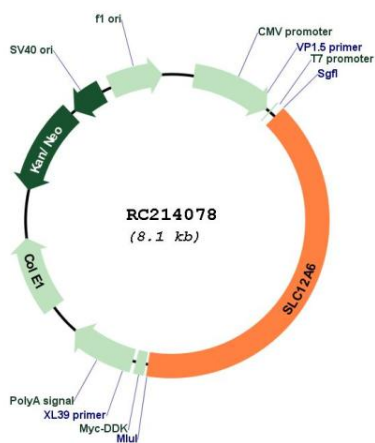
RefSeq Size: 7688 bp

RefSeq ORF: 3276 bp

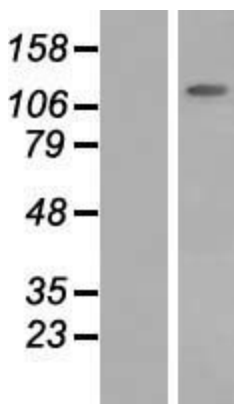
Locus ID: 9990

UniProt ID: [Q9UHW9](#)
 Cytogenetics: 15q14
 Protein Families: Transmembrane
 MW: 121.1 kDa
 Gene Summary: This gene is a member of the K-Cl cotransporter (KCC) family. K-Cl cotransporters are integral membrane proteins that lower intracellular chloride concentrations below the electrochemical equilibrium potential. The proteins encoded by this gene are activated by cell swelling induced by hypotonic conditions. Alternate splicing results in multiple transcript variants encoding different isoforms. Mutations in this gene are associated with agenesis of the corpus callosum with peripheral neuropathy. [provided by RefSeq, Jul 2008]

Product images:



Circular map for RC214078



Western blot validation of overexpression lysate (Cat# [LY420941]) using anti-DDK antibody (Cat# [TA50011-100]). Left: Cell lysates from untransfected HEK293T cells; Right: Cell lysates from HEK293T cells transfected with RC214078 using transfection reagent MegaTran 2.0 (Cat# [TT210002]).