

Product datasheet for **RC214068**

PDE4DIP (NM_001002812) Human Tagged ORF Clone

Product data:

Product Type:	Expression Plasmids
Product Name:	PDE4DIP (NM_001002812) Human Tagged ORF Clone
Tag:	Myc-DDK
Symbol:	PDE4DIP
Synonyms:	CMYA2; MMGL
Mammalian Cell Selection:	Neomycin
Vector:	pCMV6-Entry (PS100001)
E. coli Selection:	Kanamycin (25 ug/mL)



[View online »](#)

ORF Nucleotide
Sequence:

>RC214068 representing NM_001002812
Red=Cloning site Blue=ORF Green=Tags(s)

TTTTGTAATACGACTCACTATAGGGCGGCCGGGAATTCGTCGACTGGATCCGGTACCGAGGAGATCTGCC
GCC**CGCATCGCC**

ATGTCTAATGGATATCGCACTCTGTCCCAGCACCTCAATGACCTGAAGAAGGAGAACTTCAGCCTCAAGC
TGCGCATCTACTTCTTGAGGAGCGCATGCAACAGAAGTATGAGGCCAGCCGGGAGGACATCTACAAGCG
GAACATTGAGCTGAAGGTTGAAGTGGAGAGCTTAAAACGAGAAGCTCCAGGACAAGAAACAGCATCTGGAT
AAAACATGGGCTGATGTGGAGAATCTCAACAGTCAGAATGAAGCTGAGCTCCGACGCCAGTTTGGAGAGC
GACAGCAGGAGACGGAGCATGTTTATGAGCTCTTGGAGAATAAGATCCAGCTTCTGCAGGAGGAATCCAG
GCTAGCAAAGAATGAAGCTGCGCGGATGGCAGCTCTGGTGAAGCAGAGAAGGAGTGAACCTGGAGCTC
TCAGAGAACTGAAGGGAGTCACCAAAAAGTGGGAAGTGTACCAGGAGACCAGGTCAAGCCCGACCAAT
ACACTGAGGCCCTGGCCAGAGGGACAAGAGAATTGAAGAAGTGAATCAGAGCCTGGCTGCCAGGAGAG
GCTTGTAGAACAGCTATCTCGGGAGAAACAACAACTGCTACATCTGTTGGAGGAGCCAATAGCATGGAA
GTGCAGCCCATGACTGAAGAGTTGCTGAAACAACAAAAGCTGAATTCACATGAGACCACTATAACTCAGC
AGTCTGTATCTGATTCCCACTTGGCAGAAGCTCCAGGAAAAATCCAGCAAACAGAGGCCACCAACAAGAT
TCTTCAAGAGAAACTTAATGAAATGAGCTATGAACTAAAGTGTGCTCAGGAGTCTCTCAAAAGCAAGAT
GGTACAATTCAGAACCTCAAGGAAAAGCTGAAAAGCAGGGAACGTGAGACTGAGGAGTTGTACCAGGTAA
TTGAAGGTCAAAATGACACAATGGCAAAGCTTCGAGAAATGCTGCACCAAAGCCAGCTTGGACAACCTCA
CAGCTCAGAGGGTACTTCTCCAGCTCAGCAACAGGTAGCTCTGCTTGATCTTCAGAGTCTTTATTTCTGC
AGCCAATTGAAATACAGAAGCTCCAGAGGGTGGTACGACAGAAAGAGCGCCAAGTGGCTGATGCCAAAC
AATGTGTGCAATTTGTAGAGGCTGCAGCACAGAGAGTGAACAGCAGAAAGAGGCTTCTTGGAAACATAA
CCAGGAATTGCGAAAAGCCTTGCAGCAGCTACAAGAAGAATTGCAGAATAAGAGCCAACAGCTTCGTGCC
TGGGAGGCTGAAAAATACAATGAGATTCAACCCAGGAACAAAACATCCAGCACCTAAACCATAGTCTGA
GTCACAAGGAGCAGTTGCTTCAGGAATTTGCGGAGCTCCTACAGTATCGAGATAACTCAGACAAAACCTT
TGAAGCAAATGAAATGTTGCTTGAAGAACTTCGCCAGCGAATACATGATAAAGCTGTTGCTCTGGAGCGG
GCTATAGATGAAAAATCTCTGCTCTAGAAGAGAAAGAAAAAGAACTGCGCCAGCTTCGTCTTGTGTGA
GAGAGCGAGATCATGACTTAGAGAGACTGCGCGATGCTCCTCTCCTCAATGAAGCTACTATGCAAAGTAT
GGAGAGTCTCCTGAGGGCAAAGGCTGGAAGTGAACAGTTATCTACTCTGCAAAACCTCCAGTGG
CTGAAAGAAGAAATGAAACCAATTTAGCCGTTGGCAGAAGGAACAAGAGATCATTACAGCAGTTAC
AGACGTCTCTTATGATAGGAACAAGAAAGTGGAGGATCTTAGTGCAACACTGCTCTGCAAACTGGACC
AGGGCAGAGTGAGATAGCAGAGGAGCTGTGCCAGCGTCTACAGCGAAAGGAAAGGATGCTGCAGGACCTT
CTAAGTGATCGAAATAACAAGTGTGGAACATGAAATGGAGATTCAAGGCCCTGCTTCAGTCTGTGAGCA
CCAGGGAGCAGGAAAGCCAAAGCTGCTGCAGAGAAGTTGGTGAAGCCTTAATGGAAGAAATTCAGAATT
ACAGGCCCTGCGCCAATATTTAGGAGGGAGAGACTCCCTGATGTCCCAAGCACCCATCTCTAACCAACA
GCTGAAGTACCCCACTGGCCGCTTGGAAAACAGACTGATCAAGTTCAATGCAGATACCTTCCAGAG
ATGATAGCACTTCACTGACTGCCAAAGAGGATGTCAGCATACCCAGATCCACATTAGGAGACTTGGACAC
AGTTGCAGGGCTGAAAAAAGAACTGAGTAATGCCAAAGAGGAAGTGAAGTCAATGAACTAAAAAAGAAAGA
GAAAGTCAGATGGAACCTTCTGCTCTACAGTCCATGATGGCTGTGCAGGAAGAAGAGCTGCAGGTGCAGG
CTGCTGATATGGAGTCTCTGACCAGGAACATACAGATTAAAGAAGATCTCATAAAGGACCTGCAAAATGCA
ACTGGTTGATCCTGAAGACATACCAGCTATGGAACGCCTGACCCAGGAAGTCTTACTTCTTGGGAAAAA
GTTGCTTCACTAGAAATCCAGGGTCAAGAAATTTAGGAAACCGAAGACAACAGTTGCTGCTGATGCTAG
AAGGACTAGTAGATGAACGGAGTCGGCTCAATGAGGCCTTACAAGCAGAGAGACAGCTCTATAGCAGTCT
GGTGAAGTTCCATGCCATCCAGAGAGCTGAGAGAGACCGAACTCTGCAGGTGGAAGTGAAGGGGCT
CAGGTGTTACGCAGTCGGCTAGAAGAAGTCTTGAAGAAGCTTGGAGCGCTTAAACAGGCTGGAGACCC
TGGCCGCCATTGGAGGTGCAGCTGCAGGGGATGACACCGAAGATACAAGCACTGAGTTCAGTCTGACAGTAT
TGAGGAGGAGGCTGCACACCATAGTCACCAGCAACTA

ACGCGTACGCGGCCGCTCGAGCAGAACTCATCTCAGAAGAGGATCTGGCAGCAAATGATATCCTGGATT
ACAAGGATGACGACGATAAGGTTTAA

Protein Sequence: >RC214068 representing NM_001002812
 Red=Cloning site Green=Tags(s)

MSNGYRTLSQLNDLKKENFSLKLRIFYLEERMQQKYEASREDIYKRNIELKVEVESLKRELQDKKQHLD
 KWADVENLNSQNEALRRQFEERQQE TEHVYELLENKIQLLQEE SRLAKNEARMAALVEAEKECNLEL
 SEKLGKVTKNWEDVPGDQVKPDQYTEALAQDRKIEELNQSLAAQERLVEQLSREKQQLLHLLLEPTSM
 VQPMTEELLKQKLNHSHETTITQQSVSDSHLAEQEKIQTEATNKILQEKLNEMSYELKCAQESSQKQD
 GTIQNLKETLKSRETEREEL YQVIEGQNDTMAKLREMLHQSQLGQLHSSEGTSPAQQQVALLDLQSALFC
 SQLEIQKLQRVVRQKERQLADAKQCVQFVEAAHESEQQKEASWKHNQELRKALQQLQEELQNKSSQQLRA
 WEAKEYNEIRTQEIQIHLNHSLSHKEQLLQEFRELLQYRDNQSDKLEANEMMLEKLRQRIRHDKAVALER
 AIDEKFSALEEKEKELRQLRLAVRERDHLERLRDVLSSNEATMQSMESLLRAKGLEVEQLSTTCQNLQW
 LKEEMETKFSRWQKEQESI IQQLQTSLHNRNEVEDLSATLLCKLGPQSEIAEELCQRLQRKERMLQDL
 LSDRNKQVLEHEMEIQGLLQSVSTREQESQAAAEKLVQALMERNSELQALROYLGGRDSLMSQAPISNQQ
 AEVPTPGRGKQTDQGSMPISRDDSTSLTAKEDVSI PRSTLGDLDTVAGLEKEL SNAKEEELMAKKER
 ESQMEL SALSMMAVQEEELQVQAADMESL TRNIQIKEDLIKDLQMQLVDPEDIPAMERLTQEVLLLREK
 VASVESQGEISGNRRQQLLLMLEGLVDESRSLNEALQAERQLYSSLVKFHAHPSESRDRTLQVELEGA
 QVLRSLREEVLGRSLERLNRLETAAIGGAAAGDDTDTSTEF TDSIEEEAAHSHQQL

TRTRPLEQKLISEEDLAANDILDYKDDDDKV

Chromatograms: https://cdn.origene.com/chromatograms/mg2711_e01.zip

Restriction Sites: SgfI-MluI

Cloning Scheme:

Cloning sites used for ORF Shuttling:



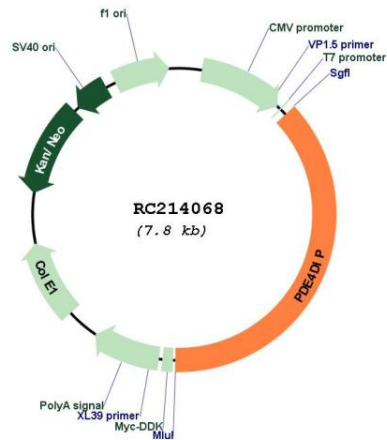
* The last codon before the Stop codon of the ORF

ACCN: NM_001002812

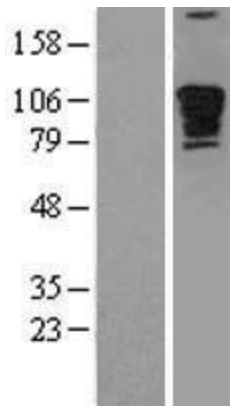
ORF Size: 2907 bp

OTI Disclaimer:	The molecular sequence of this clone aligns with the gene accession number as a point of reference only. However, individual transcript sequences of the same gene can differ through naturally occurring variations (e.g. polymorphisms), each with its own valid existence. This clone is substantially in agreement with the reference, but a complete review of all prevailing variants is recommended prior to use. More info
OTI Annotation:	This clone was engineered to express the complete ORF with an expression tag. Expression varies depending on the nature of the gene.
Components:	The ORF clone is ion-exchange column purified and shipped in a 2D barcoded Matrix tube containing 10ug of transfection-ready, dried plasmid DNA (reconstitute with 100 ul of water).
Reconstitution Method:	<ol style="list-style-type: none">1. Centrifuge at 5,000xg for 5min.2. Carefully open the tube and add 100ul of sterile water to dissolve the DNA.3. Close the tube and incubate for 10 minutes at room temperature.4. Briefly vortex the tube and then do a quick spin (less than 5000xg) to concentrate the liquid at the bottom.5. Store the suspended plasmid at -20°C. The DNA is stable for at least one year from date of shipping when stored at -20°C.
RefSeq:	NM_001002812.3
RefSeq Size:	4833 bp
RefSeq ORF:	2910 bp
Locus ID:	9659
UniProt ID:	Q5VU43
Cytogenetics:	1q21.2
MW:	112.1 kDa
Gene Summary:	The protein encoded by this gene serves to anchor phosphodiesterase 4D to the Golgi/centrosome region of the cell. Defects in this gene may be a cause of myeloproliferative disorder (MBD) associated with eosinophilia. Several transcript variants encoding different isoforms have been found for this gene. [provided by RefSeq, Aug 2010]

Product images:



Circular map for RC214068



Western blot validation of overexpression lysate (Cat# [LY424160]) using anti-DDK antibody (Cat# [TA50011-100]). Left: Cell lysates from untransfected HEK293T cells; Right: Cell lysates from HEK293T cells transfected with RC214068 using transfection reagent MegaTran 2.0 (Cat# [TT210002]).