

Product datasheet for **RC214063**

GABRE (NM_004961) Human Tagged ORF Clone

Product data:

Product Type:	Expression Plasmids
Product Name:	GABRE (NM_004961) Human Tagged ORF Clone
Tag:	Myc-DDK
Symbol:	GABRE
Mammalian Cell Selection:	Neomycin
Vector:	pCMV6-Entry (PS100001)
E. coli Selection:	Kanamycin (25 ug/mL)



[View online »](#)

ORF Nucleotide Sequence:

>RC214063 representing NM_004961
 Red=Cloning site Blue=ORF Green=Tags(s)

TTTTGTAATACGACTCACTATAGGGCGGCCGGAATTCGTCGACTGGATCCGGTACCGAGGAGATCTGCC
 GCC**CGCATCGCC**

ATGTTGTCCAAGTTCTTCCAGTCTTCTAGGCATCTTATTGATCTCCAGTCGAGGGTCGAGGGACCTC
 AGACTGAATCAAAGAATGAAGCCTTCCCGTGATGTTGTCTATGGCCCCAGCCCCAGCCTCTGGAAAA
 TCAGCTCCTCTCTGAGGAAACAAAGTCAACTGAGACTGAGACTGGGAGCAGAGTTGGCAAATGCCAGAA
 GCCTCTCGCATCCTGAACACTATCCTGAGTAATTATGACCACAACTGCGCCCTGGCATTGGAGAGAAGC
 CCACTGTGGTCACTGTTGAGATCGCCGTC AACAGCCTTGGTCTCTCTATCCTAGACATGGAATACAC
 CATTGACATCATTTCTCCAGACCTGGTACGACGAACGCCTCTGTTACAACGACACCTTTGAGTCTCTT
 GTTCTGAATGGCAATGTGGTGAAGCAGTATGGATCCCGACACCTTTTTAGGAATTCTAAGAGGACCC
 ACGAGCATGAGATCACCATGCCAACCAGATGGTCCGCATCTACAAGGATGGCAAGGTGTTGACACAA
 TAGGATGACCATTGATGCCGGATGCTCACTCCACATGCTCAGATTTCCAATGGATTCTCACTCTTGCCCT
 CTATCTTTCTCTAGCTTTTCTATCCTGAGAATGAGATGATCTACAAGTGGGAAAATTTCAAGCTTGAAA
 TCAATGAGAAGAACTCCTGGAAGCTCTTCCAGTTTGATTTTACAGGAGTGAGCAACAAAATGAAATAAT
 CACAACCCAGTTGGTGACTTCATGGTCATGACGATTTTCTTCAATGTGAGCAGGCGGTTTGGCTATGTT
 GCCTTTCAAACATATGTCCTTCTTCCGTGACCACGATGCTCTCTGGGTTTCTTTTGGATCAAGACAG
 AGTCTGCTCCAGCCCGGACCTCTCTAGGGATCACCTCTGTTCTGACCATGACCACGTTGGGCACCTTTTC
 TCGTAAGAATTTCCCGGTGTCTCTATATCACAGCCTGGATTTCTATATCGCCATCTGCTTCGTCTTC
 TGCTTCTGCGCTCTGTTGGAGTTGTCTGTGCTCAACTTCTGATCTACAACCAGACAAAAGCCATGCTT
 CTCTAAACTCCGCATCCTCGTATCAATAGCCGTGCCATGCCGTACCCGTGACGTTCCCGAGCCTG
 TGCCCGCAACATCAGGAAGCTTTTGTGTGCCAGATTGTCACTGAGGGAAAGTATGGAGAGGAGCGC
 CCGTCTTGCTCAGCCGAGCAGCCCTAGCCAGGTAGCCCTGAGGGTCCCCGACGCTCTGCTCAAGC
 TGGCCTGCTGTGAGTGGTGAAGCGTTTAAAGAAGTACTTCTGCATGGTCCCGATTGTGAGGGCAGTAC
 CTGGCAGCAGGGCCGCTCTGCATCCATGTCTACCGCCTGGATAACTACTCGAGAGTTGTTTTCCAGTG
 ACTTTCTTCTTCAATGTGCTCTACTGGCTTGTTCCTTAAGTTG

ACGCGTACGCGGCCGCTCGAGCAGAACTCATCTCAGAAGAGGATCTGGCAGCAAATGATATCCTGGATT
 ACAAGGATGACGACGATAAGGTTTAA

Protein Sequence:

>RC214063 representing NM_004961
 Red=Cloning site Green=Tags(s)

MLSKVLPVFLGILLILQSRVEGPQTESKNEASSRDVVYGPQPQPLENQLLSEETKSTETETGSRVGKLP
 ASRILNLTILSNYDHKLRPGIGEKPTVVTVEIAVNSLGPLSILDMEYTIIDIFSQTWYDERLCYNDTFESL
 VLNGNVSQLWIPDFFRNSKRTHEHEITMPNQMVRIYKDGKVL YTIRMTIDAGCSLHMLRFPMDSHSCP
 LSFSSFSYPENEMIKWENFKLEINEKNSWKLQFDFGTGVSNKTEIITTPVGFDMVMTIFFNVSRRFGYV
 AFQNYVPSVTTMLSWVFWIKTESAPARTSLGITSVL TMTTLGTFSRKNFPRVSYITALDFYIAICFVF
 CFCALLEFAVLNFLIYNQTKAHASPKLRHPRINSRAHARTRARSACARQHQAFAVCQIVTTEGSDGEER
 PSCSAEQPPSPGSPGPRSLCSKLACCEWCKRFKKYFCMPDCEGSTWQQGRLCIHVYRLDNYSRVVFV
 TFFFFNVLYWLCLNL

TRTRPLEQKLISEEDLAANDILDYKDDDDKV

Chromatograms:

https://cdn.origene.com/chromatograms/mg2513_e06.zip

Restriction Sites:

Sgfl-MluI

Cloning Scheme:


ACCN: NM_004961

ORF Size: 1518 bp

OTI Disclaimer: The molecular sequence of this clone aligns with the gene accession number as a point of reference only. However, individual transcript sequences of the same gene can differ through naturally occurring variations (e.g. polymorphisms), each with its own valid existence. This clone is substantially in agreement with the reference, but a complete review of all prevailing variants is recommended prior to use. [More info](#)

OTI Annotation: This clone was engineered to express the complete ORF with an expression tag. Expression varies depending on the nature of the gene.

Components: The ORF clone is ion-exchange column purified and shipped in a 2D barcoded Matrix tube containing 10ug of transfection-ready, dried plasmid DNA (reconstitute with 100 ul of water).

Reconstitution Method:

1. Centrifuge at 5,000xg for 5min.
2. Carefully open the tube and add 100ul of sterile water to dissolve the DNA.
3. Close the tube and incubate for 10 minutes at room temperature.
4. Briefly vortex the tube and then do a quick spin (less than 5000xg) to concentrate the liquid at the bottom.
5. Store the suspended plasmid at -20°C. The DNA is stable for at least one year from date of shipping when stored at -20°C.

RefSeq: [NM_004961.4](#)

RefSeq Size: 3167 bp

RefSeq ORF: 1521 bp

Locus ID: 2564

UniProt ID: [P78334](#)

Cytogenetics: Xq28

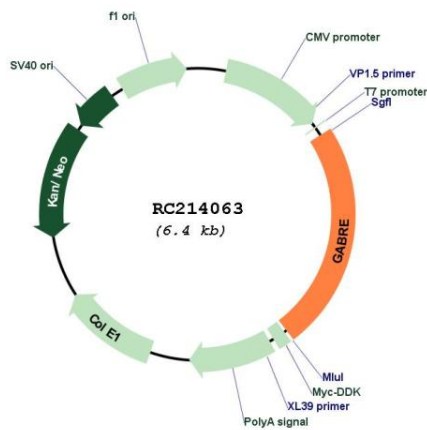
Protein Families: Druggable Genome, Ion Channels: Cys-loop Receptors, Transmembrane

Protein Pathways: Neuroactive ligand-receptor interaction

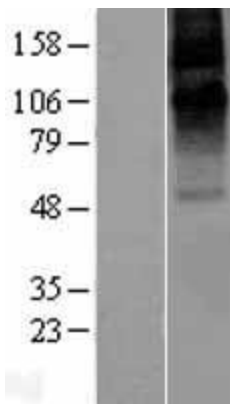
MW: 58 kDa

Gene Summary: The product of this gene belongs to the ligand-gated ionic channel (TC 1.A.9) family. It encodes the gamma-aminobutyric acid (GABA) A receptor which is a multisubunit chloride channel that mediates the fastest inhibitory synaptic transmission in the central nervous system. This gene encodes an epsilon subunit. It is mapped to chromosome Xq28 in a cluster comprised of genes encoding alpha 3, beta 4 and theta subunits of the same receptor. Alternatively spliced transcript variants have been identified, but only one is thought to encode a protein. [provided by RefSeq, Oct 2008]

Product images:



Circular map for RC214063



Western blot validation of overexpression lysate (Cat# [LY401542]) using anti-DDK antibody (Cat# [TA50011-100]). Left: Cell lysates from untransfected HEK293T cells; Right: Cell lysates from HEK293T cells transfected with RC214063 using transfection reagent MegaTran 2.0 (Cat# [TT210002]).