

## Product datasheet for RC214055

### Interferon alpha10 (IFNA10) (NM\_002171) Human Tagged ORF Clone

#### Product data:

**Product Type:** Expression Plasmids  
**Product Name:** Interferon alpha10 (IFNA10) (NM\_002171) Human Tagged ORF Clone  
**Tag:** Myc-DDK  
**Symbol:** Interferon alpha10  
**Synonyms:** IFN-alphaC  
**Mammalian Cell Selection:** Neomycin  
**Vector:** pCMV6-Entry (PS100001)  
**E. coli Selection:** Kanamycin (25 ug/mL)  
**ORF Nucleotide Sequence:** >RC214055 representing NM\_002171  
 Red=Cloning site Blue=ORF Green=Tags(s)

TTTTGTAATACGACTCACTATAGGGCGGCCGGAATTCGTCGACTGGATCCGGTACCGAGGAGATCTGCC  
 GCC**CGATCGCC**

ATGGCCCTGTCTTTTCTTTACTTATGGCCGTGCTGGTGCTCAGCTACAAATCCATCTGTTCTCTGGGCT  
 GTGATCTGCCTCAGACCCACAGCCTCGGTAATAGGAGGGCCTTGATACTCCTGGGACAAATGGGAAGAAT  
 CTCTCCTTTCTCCTGCCTGAAGGACAGACATGATTTCCGAATCCCCAGGAGGATTTGATGGCAACCAG  
 TTCCAGAAGGCTCAAGCCATCTGTCTCCATGAGATGATCCAGCAGACCTTCAATCTCTTCAGCACAG  
 AGGACTCATCTGTGCTTGGGAACAGAGCCTCCTAGAAAAATTTCCACTGAACCTTACCAGCAACTGAA  
 TGACCTGGAAGCATGTGTGATACAGGAGTTGGGGTGGAAAGAGACTCCCCGATGAATGAGGACTCCATC  
 CTGGCTGTGAGGAAATACTTCAAAGAATCACTCTTTATCTAATAGAGAGGAAATACAGCCCTTGTGCCT  
 GGGAGGTTGTGAGAGCAGAAATCATGAGATCCCTCTCGTTTTCAACAACTTGCAAAAAAGATTAAGGAG  
 GAAGGAT

**ACGCGT**ACGCGGCCGCTCGAGCAGAACTCATCTCAGAAGAGGATCTGGCAGCAATGATATCCTGGATT  
 ACAAGGATGACGACGATAAGGTTTAA

**Protein Sequence:** >RC214055 representing NM\_002171  
 Red=Cloning site Green=Tags(s)

MALSFLLMAVLVLSYKSICSLGCDLPQTHSLGNRRALILLGQMGRISPFSLKDRHDFRIPQEEFDGNQ  
 FQKAQAISVLHEMIQQTFNLFSTEDSSAAWEQSLLEKFSSTELYQQLNDLEACVIQEVGVEETPLMNEDSI  
 LAVRKYFQRITLYLIERKYSPEAWEVVRAEIMRSLSFSTNLQKRLRRKD

**TRTRPLEQKLISEEDLAANDILDYKDDDDKV**

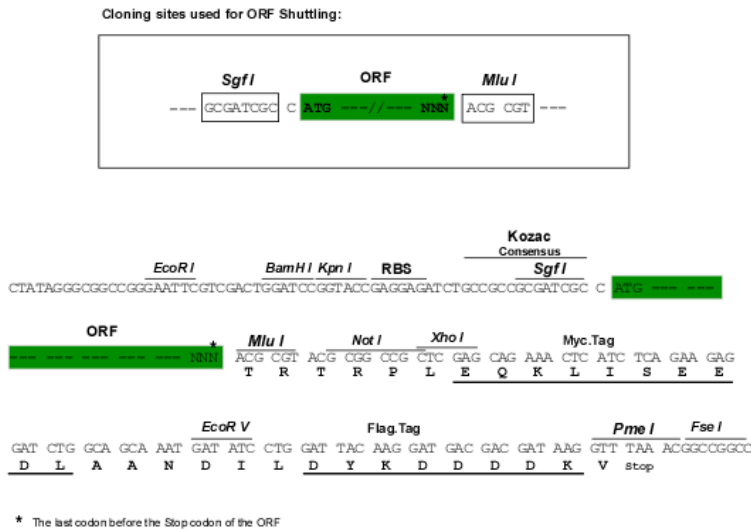


[View online »](#)

**Chromatograms:** [https://cdn.origene.com/chromatograms/mg3828\\_d01.zip](https://cdn.origene.com/chromatograms/mg3828_d01.zip)

**Restriction Sites:** SgfI-MluI

**Cloning Scheme:**



**ACCN:** NM\_002171

**ORF Size:** 567 bp

**OTI Disclaimer:** The molecular sequence of this clone aligns with the gene accession number as a point of reference only. However, individual transcript sequences of the same gene can differ through naturally occurring variations (e.g. polymorphisms), each with its own valid existence. This clone is substantially in agreement with the reference, but a complete review of all prevailing variants is recommended prior to use. [More info](#)

**OTI Annotation:** This clone was engineered to express the complete ORF with an expression tag. Expression varies depending on the nature of the gene.

**Components:** The ORF clone is ion-exchange column purified and shipped in a 2D barcoded Matrix tube containing 10ug of transfection-ready, dried plasmid DNA (reconstitute with 100 ul of water).

**Reconstitution Method:**

1. Centrifuge at 5,000xg for 5min.
2. Carefully open the tube and add 100ul of sterile water to dissolve the DNA.
3. Close the tube and incubate for 10 minutes at room temperature.
4. Briefly vortex the tube and then do a quick spin (less than 5000xg) to concentrate the liquid at the bottom.
5. Store the suspended plasmid at -20°C. The DNA is stable for at least one year from date of shipping when stored at -20°C.

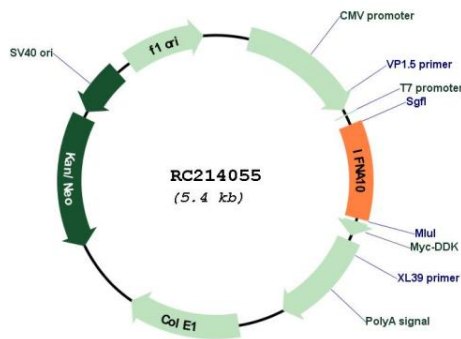
**Note:** Plasmids are not sterile. For experiments where strict sterility is required, filtration with 0.22um filter is required.

**RefSeq:** [NM\\_002171.1](#), [NP\\_002162.1](#)

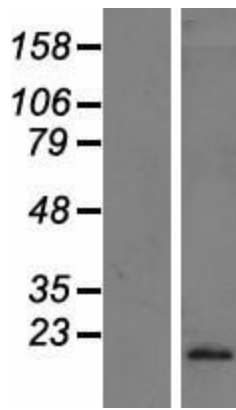
**RefSeq Size:** 963 bp

RefSeq ORF:	570 bp
Locus ID:	3446
UniProt ID:	<a href="#">P01566</a>
Cytogenetics:	9p21.3
Protein Families:	Druggable Genome, Secreted Protein
Protein Pathways:	Antigen processing and presentation, Autoimmune thyroid disease, Cytokine-cytokine receptor interaction, Cytosolic DNA-sensing pathway, Jak-STAT signaling pathway, Natural killer cell mediated cytotoxicity, Regulation of autophagy, RIG-I-like receptor signaling pathway, Toll-like receptor signaling pathway
MW:	21.7 kDa
Gene Summary:	This gene encodes a protein that belongs to the type I interferon family of proteins, and is located in a cluster of alpha interferon genes on chromosome 9. Interferons are small regulatory molecules that function in cell signaling in response to viruses and other pathogens or tumor cells. This gene is intronless and the encoded protein is secreted. [provided by RefSeq, Aug 2013]

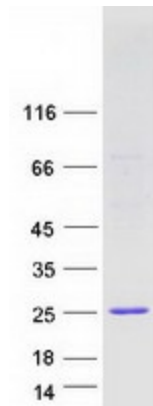
**Product images:**



Circular map for RC214055



Western blot validation of overexpression lysate (Cat# [LY419488]) using anti-DDK antibody (Cat# [TA50011-100]). Left: Cell lysates from untransfected HEK293T cells; Right: Cell lysates from HEK293T cells transfected with RC214055 using transfection reagent MegaTran 2.0 (Cat# [TT210002]).



Coomassie blue staining of purified IFNA10 protein (Cat# [TP314055]). The protein was produced from HEK293T cells transfected with IFNA10 cDNA clone (Cat# RC214055) using MegaTran 2.0 (Cat# [TT210002]).