

Product datasheet for RC214052

FAM210A (NM_001098801) Human Tagged ORF Clone

Product data:

Product Type:	Expression Plasmids
Product Name:	FAM210A (NM_001098801) Human Tagged ORF Clone
Tag:	Myc-DDK
Symbol:	FAM210A
Synonyms:	C18orf19; HsT2329
Mammalian Cell Selection:	Neomycin
Vector:	pCMV6-Entry (PS100001)
E. coli Selection:	Kanamycin (25 ug/mL)
ORF Nucleotide Sequence:	>RC214052 representing NM_001098801 Red=Cloning site Blue=ORF Green=Tags(s)

TTTTGTAATACGACTCACTATAGGGCGGCCGGAATTCGTCGACTGGATCCGGTACCGAGGAGATCTGCC
GCC**CGGATCGCC**

ATGCAATGGAATGTACCACGGACTGTATCTCGACTGGCACGCAGGACATGCTTGGAAACCACATAATGCTG
GTCTCTTTGGACTGTCAAAATGTAAGGGACCTTTACTTTTATACAATGCTGAATCCAAAGTGGTTTT
GGTACAAGGCCCTCAAAAACAATGGTTGCATTTATCTGCTGCCAGTGTGTTGCAAAGGAAAGGAGGCCA
TTGGATGCTCATCACCCCAACCAGGAGTCCTTCGCCATAAGCAAGGGAAGCAACATGTTTCATTCAGGA
GGGTTTTTTCATCCAGTGCCACAGCTCAGGGAACCTCCGAAAAAAGGAAGGCCTGATCCTTTGCAAGA
CAAATCTATTAGTCTTTATCAACGATTCAGAAGACATTTAGACAGTATGGAAAAGTTCTGATTCAGTG
CATCTAATAACTTCTGGTGTGGTTGGTTGGAACATTTATTATGCAGCCTTGAAAGGAGTGAATGTCGTT
CTTTTCTAGAACTCATTGGGTTACCTGACAGTGTGGTAAGCATCCTGAAAACTCCAGAGTGGAATGC
CCTCACAGCATATGCCTTGTAAAGATTGCAACACCTGCTCGGTATACCGTGACTTTGGGAGGAACATCT
GTCAGTGTGAAGTATCTGCGCAGTCATGGCTACATGTCCACGCCGCCACCCGTCAAGGAGTATCTGCAGG
ACAGGATGGAAGAGACAAAGGAGCTTATCACAGAGAAAATGGAAGAAAACAAAAGATAGACTCACTGAAAA
GTTACAAGAAACCAAGAAAAAGTTTCCTTTAAGAAAAAGTGGAA

ACGCGTACGCGGCCGCTCGAGCAGAAACTCATCTCAGAAGAGGATCTGGCAGCAAATGATATCCTGGATT
ACAAGGATGACGACGATAAGGTTTAA



[View online »](#)

Protein Sequence: >RC214052 representing NM_001098801
 Red=Cloning site Green=Tags(s)

MQWNPRTVSRLARRTCLEPHNAGLFGHCQNVKGPLLLYNAESKVVLVQGPQKQWLHL SAAQCVAKERRP
 LDAHPPQPGVLRHKQKQHVSRVVFSSSATAQGTPEKKEEPDPLQDKSISLYQRFKKTRFRQYGVKVLIPV
 HLITSGVWFGTFYYAALKGVNVVPFLELIGLPDSVVSILKNSQSGNAL TAYALFKIATPARYTVTLGGTS
 VTVKYLRSHGYMSTPPPKEYLQDRMEETKELITEKMEETKDRLTEKLQETKEKVSFKKKVE

TRTRPLEQKLISEEDLAANDILDYKDDDDKV

Chromatograms: https://cdn.origene.com/chromatograms/mk6497_d09.zip

Restriction Sites: SgfI-MluI

Cloning Scheme:



ACCN: NM_001098801

ORF Size: 816 bp

OTI Disclaimer: The molecular sequence of this clone aligns with the gene accession number as a point of reference only. However, individual transcript sequences of the same gene can differ through naturally occurring variations (e.g. polymorphisms), each with its own valid existence. This clone is substantially in agreement with the reference, but a complete review of all prevailing variants is recommended prior to use. [More info](#)

OTI Annotation: This clone was engineered to express the complete ORF with an expression tag. Expression varies depending on the nature of the gene.

Components: The ORF clone is ion-exchange column purified and shipped in a 2D barcoded Matrix tube containing 10ug of transfection-ready, dried plasmid DNA (reconstitute with 100 ul of water).

Reconstitution Method:

1. Centrifuge at 5,000xg for 5min.
2. Carefully open the tube and add 100ul of sterile water to dissolve the DNA.
3. Close the tube and incubate for 10 minutes at room temperature.
4. Briefly vortex the tube and then do a quick spin (less than 5000xg) to concentrate the liquid at the bottom.
5. Store the suspended plasmid at -20°C. The DNA is stable for at least one year from date of shipping when stored at -20°C.

RefSeq: [NM_001098801.2](#)

RefSeq Size: 4392 bp

RefSeq ORF: 819 bp

Locus ID: 125228

UniProt ID: [Q96ND0](#)

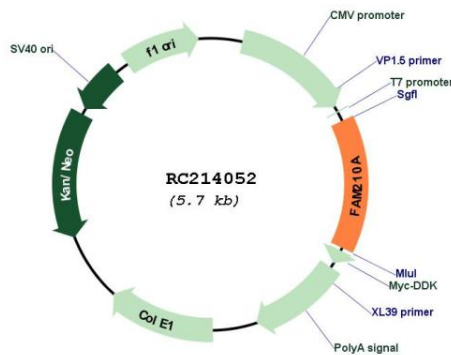
Cytogenetics: 18p11.21

Protein Families: Transmembrane

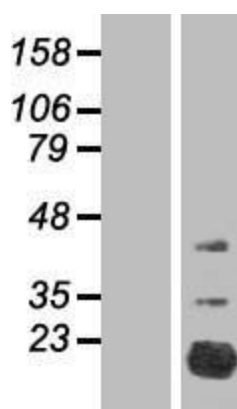
MW: 30.6 kDa

Gene Summary: May play a role in the structure and strength of both muscle and bone.[UniProtKB/Swiss-Prot Function]

Product images:



Circular map for RC214052



Western blot validation of overexpression lysate (Cat# [LY407602]) using anti-DDK antibody (Cat# [TA50011-100]). Left: Cell lysates from untransfected HEK293T cells; Right: Cell lysates from HEK293T cells transfected with [RC220231] using transfection reagent MegaTran 2.0 (Cat# [TT210002]).