

## Product datasheet for **RC214046**

### **RINL (NM\_198445) Human Tagged ORF Clone**

#### **Product data:**

Product Type:	Expression Plasmids
Product Name:	RINL (NM_198445) Human Tagged ORF Clone
Tag:	Myc-DDK
Symbol:	RINL
Mammalian Cell Selection:	Neomycin
Vector:	pCMV6-Entry (PS100001)
E. coli Selection:	Kanamycin (25 ug/mL)



[View online »](#)

**ORF Nucleotide Sequence:**

>RC214046 representing NM\_198445  
 Red=Cloning site Blue=ORF Green=Tags(s)

TTTTGTAATACGACTCACTATAGGGCGGCCGGAATTCGTCGACTGGATCCGGTACCGAGGAGATCTGCC  
 GCC**GCGATCGCC**

ATGCCAGACCTGCCCATCTCCTGGCCTTCTATCAGCCAGCAGGGATGTTCTGCCAGAACCCTGCTCT  
 TGCCCCCTCCACTCTAGGGCCAGAGATGAACACACAGATCCTGTGCAGATCGGCAGGGTCCAACAGGA  
 CACCCAGGGAAGGTGCTTCCATTGTGAACAGCTCTACCTGGAGACCCACAGAGGCTGGGGGAGGGAG  
 CAGACCCCTCAAGAAACAGAGCCAGAGGCTGCTCAGAGACATGATCCAGCCCCAGGAACCTGCGCCTC  
 ACGGGGTCTCCTGGGTGAAAGGCCCGCTCAGCCCGGAAGTGGACCATCCTGGGCCGGCTCTGCCAGCCT  
 ACTGGAAGAGGAGGAGGAAGACCTTGAAGGAAAGGAGGAAGGAAGGGAGGACGACCTGAAGAGGAAGGC  
 CCTGAGGACGTGCTCACCATTACGTCCAGTCTCTGGTCAGGGCCCGGAGCAGCTACGTGGCCAGGCAGT  
 ACCGAAGCCTTCGGGTGCGCATCGCCTCAGATTCTGGGGTCCCCACGGGTCTGGGGACCCGGCCACGGA  
 GCTGCTTCAAGATGTGCGGCACCTCCTTACTGACCTCCAGGATCACCTGGCAAAGGACTCCTACATCAGG  
 GCTGTCTTTGAAAGCAGGGGTCTGGGCTCCCCAAGAAGGACGAGGATCCAGGCCCGCGCTGGAGACGG  
 CGGTGTGCCAGGCGGTGCTGGCGCCCTGAAGCCGGCCCTGTGGACACGACTCCGCACACTCCGAGCACC  
 GGAGCTGCGGCGGCTGCGGCGGCACAGACAGCCCTGCGGGCGGGGGCGGGGCTCCGGGGGACAGGGG  
 CCGGGACCGGAAGGGCAGAGCCCCGCCCGCCTTGGGAGCCGATCCACGAGCGCCTTGGCAGCCTCC  
 ACGCTGCCTGCGCCCCGCGCCGAAGGTGGCGCTCCTCTTGGAGGTGTGCAGAGATGTCTATGCGGGCT  
 GGCTCGAGGCGAGAACCAAGATCCCCTGGGGCCGACGCTTCTGCGGGCGCTGACCGAGGAACATC  
 TGGAGCCCGACATTGGGGACACGACGCTGGACGTAGAGTTTCTTATGGAGCTCTTAGATCCAGATGAGC  
 TCGGGGAGAGGCTGGGTACTACCTGACCAGTGGTGGTGGGGCGCTGCACCACATTGCCACTACCGAGG  
 CGAAACAGACCGGCTCCCCGGGGCTCAGCTCCGAGGCCCGCGCTCCCTGCACCAGTGGCACCAGG  
 CGGACGCTGCACAGAAAGGATCATCCAGAGCCAGGCCAACCTGCCCTTAAGGAGCCATGGGCAGAAG  
 AGACTGTGACAGGGACAGTGAACAAC

**ACGCGT**ACGCGGCCGCTCGAGCAGAACTCATCTCAGAAGAGGATCTGGCAGCAAATGATATCCTGGATT  
 ACAAGGATGACGACGATAAGGTTTAA

**Protein Sequence:**

>RC214046 representing NM\_198445  
 Red=Cloning site Green=Tags(s)

MPDLPHLLAFLSASRDVLPRTLLLPPPTLGRDEHTDPVQIGRVQQDTPGKVLIVNQLYLETHRGWGRE  
 QTPQETEPEAAQRHDPAPRNPAPHGVSWSVKGPLSPEVDHPGALASLLEEEEDLEGKEEGREDDPEEEG  
 PEDVLTIVHVSQSLVRARSSYVARQYRSLRVRIASDSGGPHGSGDPATELLQDVRHLLTDLQDHLAKDSYIR  
 AVFGSRGPGPLPKKDEDPGPALETAVCQAVLAPLKPALWTRLRLRAPELRRRLRRRQTALRAGAGPPGAQG  
 PGPEGQSPAPALRSRIHERLAHLHAACAPRRKVALLLEVCRDVYAGLARGENQDPLGADAFLPALTEELI  
 WSPDIGDTQLDVEFLMELLDPELDRGEAGYYLTTWFGALHHIAHYQPETDRAPRGLSSEARASLHQWHRR  
 RTLHRKDHPRQAANLPFKEPWAEETVTGTSDN

**TR**TRPLEQKLISEEDLAANDILDYKDDDDKV

**Chromatograms:**

[https://cdn.origene.com/chromatograms/mk8029\\_d10.zip](https://cdn.origene.com/chromatograms/mk8029_d10.zip)

**Restriction Sites:**

SgfI-MluI

**Cloning Scheme:**


**ACCN:** NM\_198445

**ORF Size:** 1356 bp

**OTI Disclaimer:** The molecular sequence of this clone aligns with the gene accession number as a point of reference only. However, individual transcript sequences of the same gene can differ through naturally occurring variations (e.g. polymorphisms), each with its own valid existence. This clone is substantially in agreement with the reference, but a complete review of all prevailing variants is recommended prior to use. [More info](#)

**OTI Annotation:** This clone was engineered to express the complete ORF with an expression tag. Expression varies depending on the nature of the gene.

**Components:** The ORF clone is ion-exchange column purified and shipped in a 2D barcoded Matrix tube containing 10ug of transfection-ready, dried plasmid DNA (reconstitute with 100 ul of water).

- Reconstitution Method:**
1. Centrifuge at 5,000xg for 5min.
  2. Carefully open the tube and add 100ul of sterile water to dissolve the DNA.
  3. Close the tube and incubate for 10 minutes at room temperature.
  4. Briefly vortex the tube and then do a quick spin (less than 5000xg) to concentrate the liquid at the bottom.
  5. Store the suspended plasmid at -20°C. The DNA is stable for at least one year from date of shipping when stored at -20°C.

**Note:** Plasmids are not sterile. For experiments where strict sterility is required, filtration with 0.22um filter is required.

**RefSeq:** [NM\\_198445.4](#)

**RefSeq Size:** 2413 bp

**RefSeq ORF:** 1359 bp

**Locus ID:** 126432

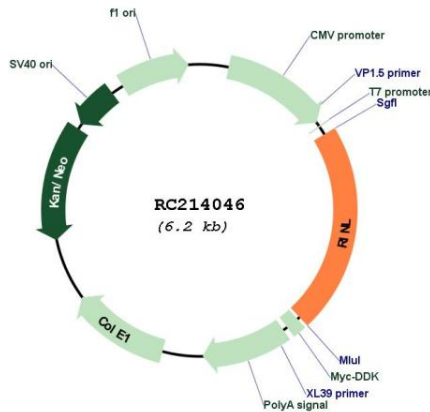
UniProt ID: [Q6ZS11](#)

Cytogenetics: 19q13.2

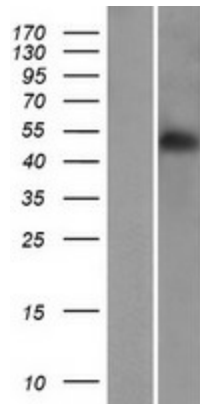
MW: 49.9 kDa

Gene Summary: Guanine nucleotide exchange factor (GEF) for RAB5A and RAB22A that activates RAB5A and RAB22A by exchanging bound GDP for free GTP. Plays a role in endocytosis via its role in activating Rab family members (By similarity).[UniProtKB/Swiss-Prot Function]

### Product images:



Circular map for RC214046



Western blot validation of overexpression lysate (Cat# [LY404932]) using anti-DDK antibody (Cat# [TA50011-100]). Left: Cell lysates from untransfected HEK293T cells; Right: Cell lysates from HEK293T cells transfected with RC214046 using transfection reagent MegaTran 2.0 (Cat# [TT210002]).