

## Product datasheet for RC214043

### MLLT6 (NM\_005937) Human Tagged ORF Clone

#### Product data:

**Product Type:** Expression Plasmids  
**Product Name:** MLLT6 (NM\_005937) Human Tagged ORF Clone  
**Tag:** Myc-DDK  
**Symbol:** MLLT6  
**Synonyms:** AF17  
**Mammalian Cell Selection:** Neomycin  
**Vector:** pCMV6-Entry (PS100001)  
**E. coli Selection:** Kanamycin (25 ug/mL)  
**ORF Nucleotide Sequence:** >RC214043 representing NM\_005937  
 Red=Cloning site Blue=ORF Green=Tags(s)

TTTTGTAATACGACTCACTATAGGGCGGCCGGAATTCGTCGACTGGATCCGGTACCGAGGAGATCTGCC  
 GCC**CGATCGCC**

ATGAAGGAGATGGTAGGAGGCTGCTGCGTATGTTCCGGACGAGAGGGGCTGGGCCGAGAACCCGCTGGTCT  
 ACTGCGATGGGCACGCGTGCAGCGTGGCCGTCCACCAAGCTTGCTATGGCATCGTTCAGGTGCCAACGGG  
 ACCCTGGTCTGCCGAAATGTGAATCTCAGGAGCGAGCAGCCAGGGTGAGGTGTGAGCTGTGCCACAC  
 AAAGACGGGGCATTGAAGAGGACTGATAATGGAGGCTGGGCACACGTGGTGTGTGCCCTCATATCCCCG  
 AGGTGCAATTTGCCAACGTGCTCACCATGGAGCCCATCGTCTGCAGTACGTGCCCTCATGATCGTTCAA  
 CAAGACCTGTTACATCTGCGAGGAGCAGGGCCGGGAGAGCAAGCGGCCCTCGGGAGCCTGCATGACCTGT  
 AACCGCCATGGATGTCGACAAGCTTCCACGTCACCTGTGCCAAATGGCAGGCTTGCTGTGTGAGGAAG  
 AAGTGCTGGAGGTGGACAACGTCAGTACTGCGGCTACTGCAAATACCACTTCAGCAAGATGAAGACATC  
 CCGGCACAGCAGCGGGGAGGCGGAGGAGGCGCTGGAGGAGGAGGTGGCAGCATGGGGGAGGTGGCAGT  
 GGTTTCATCTCTGGGAGGAGAAGCCGGTCCAGCCTCACCATCCACGCAGCAGGAGAAGCACCCACCCACC  
 ACGAGAGGGGCCAGAAGAAGAGTCGAAAGGACAAAGAACGCCCTAAGCAGAAGCACAAGAAGCGGCCCTGA  
 GTCGCCCCCAGCATCCTCACCCGCCCCGTGGTCCCCACTGCTGACAAGGTCTCCTCCTCGGCTTCTCTCT  
 TCCTCCCACACGAGGCCAGCAGCAGGAGACCTCTGAGAGCAGCAGGGAGTCAAAGGGGAAAAAGTCTT  
 CCAGCCATAGCCTGAGTCATAAAGGGAAGAACTGAGCAGTGGGAAAGGTGTGAGCAGTTTTACCTCCGC  
 CTCTCTTCTTCTCCTCCTCTTCTCCTCCTCTGGGGGCCCTTCCAGCCTGCAGTCTCGTCCCTGCAG  
 AGCTCCCCTGACTTCTCTGCATTCCCCAAGCTGGAGCAGCCAGAGGAGGACAAGTACTCCAAGCCCACAG  
 CCCCCGCCCTTCCAGCCCTCCTTCTCCTCAGCTCCCGAGCCCCCAAGGCTGACCTTTTTGAGCAGAA  
 GGTGGTCTTCTCTGGCTTTGGGCCATCATGCGCTTCTCCACCACCCTCCAGCTCAGGCCGGGCCGG  
 GCGCCCTCCCCTGGGACTATAAGTCTCCCCACGTCACGGGTCTGGGGCCTCGGCAGGCACCCACAAC  
 GGATCCCCGACTGAGTGCCACCCTGTGCTGATGAGACCCTGAGACAGGCTGAAGGAGAAGAA  
 GCACAAAGCCAGCAAGAGGAGCCGCATGGGCCAGGCCCTCCAAGGCCAGCCGGAACAAGGAGGCACT



```

GGGGGCCAGCTGCCCCATCCTTGCCAGTGCCAGCTGGCTGGCTTTACCGCCACTGCTGCCTCACCT
TCTCTGGAGGTTCCCTGGTCAGCTCCGGCTGGGAGGTCTGTCTCCCGAACCTTTGGGCTTCTGGGAG
CTTGCCAGCTTGAGCCTGGAGTCCCCCTTACTAGGGCAGGCATCTACACAGTAATAAGGACCCCATC
TCCACAGTGGCGGGATGCTGCGGGCTGTCTGCAGCACCCCTCTCTCCTCCAGCCTCCTGGGGCCCCAG
GGACCTCGGCCCTGCCCCGCTCAGCCGCTCCCCGTTACCAGCACCCCTCCCTCCTCTTCTGCTTCTAT
CTCCACCCTCAGGTGTTTTCTCTGGCTGGCTACCTTTAGCCCTCCCTTCTACCCACATCTTTGGAACC
CCCATGGGTGCCGTTAATCCCCCTCTCTCCCAAGCTGAGAGCAGCCACACAGAGCCAGCAGCTGGAGGACT
GCAGTTCGGGTGTCGGGGGACCTCCCCCAGGAGAGTCTGTCTTCCATGTCCCCCATCAGCAGCCTCCC
CGCACTCTTCGACCAGACAGCCTCTGCACCCTGTGGGGCGGCCAGTTAGACCCGCGGCCCCAGGGACG
ACTAACATGGAGCAGCTTCTGGAGAAGCAGGGCGACGGGGAGGCCGGCTCAACATCGTGGAGATGCTGA
AGGCGCTGCACCGCTGCAGAAGGAGAACCAGCGGCTGCAAGAGCAGATCCTGAGCCTGACGGCCAAAA
GGAGCGGCTGCAGATTCTCAACGTGCAGCTCTCTGTGCCCTCCCTGCCCTGCTGCTGCCCTGCTGCC
GCCAACGGCCCTGTCCCTGGGCCCTATGGCCTGCCTCCCCAAGCCGCGCAGCAGCGACTCCTTGAGCACA
GCAAGAGCCCTCCGGAAAGAGCAGCCTCGGCCTGGACAACCTCGTGTCCACTTCTTCTGAGGACCACA
CTCAGGCTGCCGAGCCGAGCAGCTCGTGCCTGTCTCCACAGCACGCCCCACCGCTGCCCTCCTC
CAGCAGAGCCCTGCCACTCTGCCCTGGCCTGCCTGGGGCCCCCTGCCCACTCCCGCCCCAGCCGAGA
ACGGGTTGGGCCGGCACCCGGGCGAGCGGGCTGGGGGCCATGCCCATGGCTGAGGGGGCTGTTGGGGG
GCTGGCAGGCACTGGGGGCTGCCCTCAATGGGCTCCTTGGGGGTGAATGGGGCCGCTGCCCCAAAC
CCCGAAGCTTGAGCCAGGCTGGCGGGGCCCCACGCTGCAGCTGCCAGGCTGTCTCAACAGCCTTACAG
AGCAGCAGAGACATCTCCTTTCAGCAGCAAGAGCAGCAGCTCCAGCAACTCCAGCAGCTCCTGGCCTCCC
GCAGCTGACCCCGAACCAGACTGTTGTCTACCAGATGATCCAGCAGATCCAGCAGAAACGGGAGCTG
CAGCGCTGCAGATGGCTGGGGGCTCCCAGCTGCCATGGCCAGCCTGCTGGCAGGAACTCCACCCCGC
TGCTGTCTGCGGGTACCCCTGGCCTGTGCCACAGCAGCTGTCTCCACCCTGCTGCCCGTGGAGCCCT
AGTGGCTCCCTCGTTGGCAACAACACAAGTCTCATGGCCGAGCAGCTGCAGTGCAGCAGTAGCAGCA
GCAGGCGACCTCCAGTCTCACTGCCAGACCAACCCTTCTCAGCCTGTCCGGAGCAGAGGGGAGTG
GCGGTGGCCCAAGGAGGGACCGCTGACAAAGGAGCCTCAGCCAACCAGGAAAAAGG

```

```

AGCGGACCGACGCGTACGCGGCCGCTCGAGCAGAACTCATCTCAGAAGAGGATCTGGCAGCAAATGATATCC
TGGATTACAAGGATGACGACGATAAGGTTTAA

```

**Protein Sequence:**

```

>RC214043 representing NM_005937
Red=Cloning site Green=Tags(s)

```

```

MKEMVGGCCVCSDERGWAENPLVYCDGHACSVAVHQACYGIVQVPTGPWFCRKCESQERAARVRCELCPH
KDGALKRTDNGGWAHVVCALYIPEVQFANVL TMEPIVLQYVPHDRFNKTCYICEEQGRESKAASGACMTC
NRHGCRQAFHVTCQMAGLLCEEVLEVDNVKYCYKYHFSKMKTSRHSSGGGGGAGGGGGSMGGGGS
GFI SGRRSRSASPSTQEKHPTHHERGQKSRKDKERLQKHKKRPEPPSILTPPVVPTADKVSSASS
SSHHEASTQETSESSRESKGKSSSHLSHGKGLSSGKGVSSFTSASSSSSSSSSSSGGPFQPAVSSLQ
SSPDFSAFPKLEQPEEDKYSKPTAPAPSAPPSPSAPEPPKADLFEQKVVFSGFIMRFSTTTSSGRAR
APSPGDYKSPHVTGSGASAGTHKMPALSATPVPADETPETGLKEKHKHASKRSRHGPRPKGSRNKEGT
GGPAAPSLPSAQLAGFTATAASPFSGGSLVSSGLGGLSSRTFGPSGSLPSLSLEPLLGAGIYTSNKDPI
SHSGMMLRAVCSTPLSSLLGPPGTSALPRLSRPFSTLPLSSASISTTQVFLAGSTFLPSTHIFGT
PMGAVNPLLQAESSHTEPDLEDCSFRCRGTSPQESLSSMSPISLPLALFDQASAPCGGQLDPAAPGT
TNMEQLLEKQGDGEAGVNI VEMLKALHALQKENQRLQEQLSL TAKKERLQILNVQLSVPFPAALPA
ANGPVPGPYGLPPQAGSSDSLSTSKSPPGKSSLGLDNSLSTSSDPHSGCPSRSSSSLSFHSTPPPLPLL
QQSPATLPLALPGAPAPLPPQPQNGLGRAPGAAGLGAMPMAEGLLGLLAGSGGLPLNGLLGLNGAAAPN
PASLSQAGGAPTLQLPGCLNSL TEQQRHLLQQQEQLLQQLLQQLASPQLTPEHQT VVYQMIQQIQKREL
QRLQ MAGGSQLPMASLLAGSSTPLL SAGTPGLLPTASAPPLL PAGALVAPSLGNNTSLMAAAAAAVAA
AGGPPVLTAQTNPFLSLSGAEAGSGGPKGGTADKGASANQEKG

```

```

SGPTRRRLEQKLI SEEDLAANDILDYKDDDDK

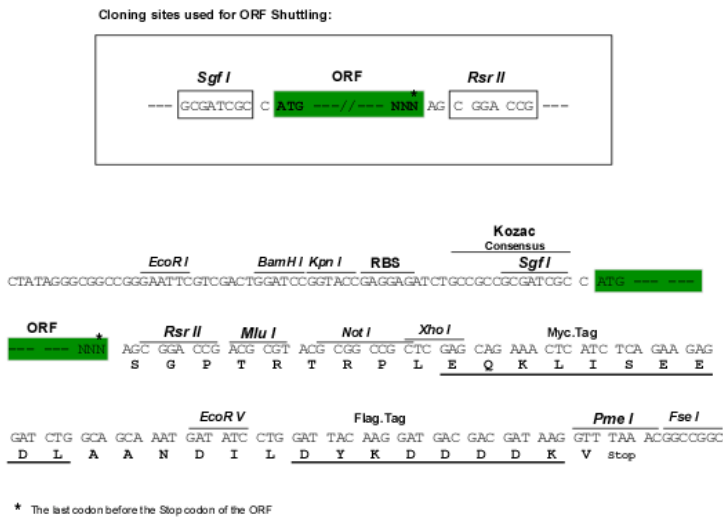
```

**Chromatograms:**

[https://cdn.origene.com/chromatograms/mk8029\\_d12.zip](https://cdn.origene.com/chromatograms/mk8029_d12.zip)

**Restriction Sites:** SgfI-RsrII

**Cloning Scheme:**



**ACCN:** NM\_005937

**ORF Size:** 3279 bp

**OTI Disclaimer:** Due to the inherent nature of this plasmid, standard methods to replicate additional amounts of DNA in E. coli are highly likely to result in mutations and/or rearrangements. Therefore, OriGene does not guarantee the capability to replicate this plasmid DNA. Additional amounts of DNA can be purchased from OriGene with batch-specific, full-sequence verification at a reduced cost. Please contact our customer care team at [custsupport@origene.com](mailto:custsupport@origene.com) or by calling 301.340.3188 option 3 for pricing and delivery.

The molecular sequence of this clone aligns with the gene accession number as a point of reference only. However, individual transcript sequences of the same gene can differ through naturally occurring variations (e.g. polymorphisms), each with its own valid existence. This clone is substantially in agreement with the reference, but a complete review of all prevailing variants is recommended prior to use. [More info](#)

**OTI Annotation:** This clone was engineered to express the complete ORF with an expression tag. Expression varies depending on the nature of the gene.

**Components:** The ORF clone is ion-exchange column purified and shipped in a 2D barcoded Matrix tube containing 10ug of transfection-ready, dried plasmid DNA (reconstitute with 100 ul of water).

**Reconstitution Method:**

1. Centrifuge at 5,000xg for 5min.
2. Carefully open the tube and add 100ul of sterile water to dissolve the DNA.
3. Close the tube and incubate for 10 minutes at room temperature.
4. Briefly vortex the tube and then do a quick spin (less than 5000xg) to concentrate the liquid at the bottom.
5. Store the suspended plasmid at -20°C. The DNA is stable for at least one year from date of shipping when stored at -20°C.

**Note:** Plasmids are not sterile. For experiments where strict sterility is required, filtration with 0.22um filter is required.

**RefSeq:** [NM\\_005937.4](#)

**RefSeq Size:** 4914 bp

**RefSeq ORF:** 3282 bp

**Locus ID:** 4302

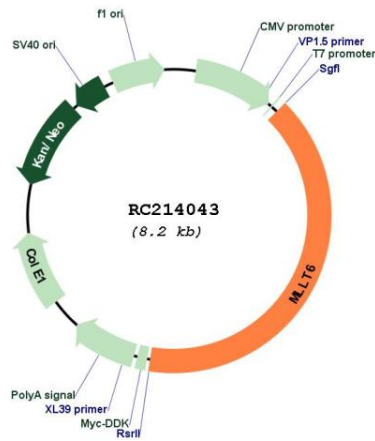
**UniProt ID:** [P55198](#)

**Cytogenetics:** 17q12

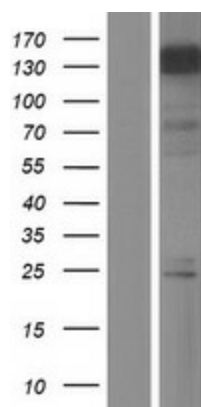
**Protein Families:** Druggable Genome

**MW:** 111.9 kDa

**Product images:**



Circular map for RC214043



Western blot validation of overexpression lysate (Cat# [LY416978]) using anti-DDK antibody (Cat# [TA50011-100]). Left: Cell lysates from untransfected HEK293T cells; Right: Cell lysates from HEK293T cells transfected with RC214043 using transfection reagent MegaTran 2.0 (Cat# [TT210002]).