

Product datasheet for **RC214041**

Sarcalumenin (SRL) (NM_001098814) Human Tagged ORF Clone

Product data:

Product Type:	Expression Plasmids
Product Name:	Sarcalumenin (SRL) (NM_001098814) Human Tagged ORF Clone
Tag:	Myc-DDK
Symbol:	Sarcalumenin
Synonyms:	SAR
Mammalian Cell Selection:	Neomycin
Vector:	pCMV6-Entry (PS100001)
E. coli Selection:	Kanamycin (25 ug/mL)



[View online »](#)

ORF Nucleotide Sequence:

>RC214041 representing NM_001098814
 Red=Cloning site Blue=ORF Green=Tags(s)

TTTTGTAATACGACTCACTATAGGGCGGCCGGAATTCGTCGACTGGATCCGGTACCGAGGAGATCTGCC
 GCC**CGGATCGCC**

ATGAGGGCGCTGGTCCTGCTCGGCTGCCTCCTGGCCTCGCTCCTGTTCTCAGGACAAGCAGAAGAGACGG
 AGGATGCAAAATGAAGAAGCCCATTGAGGGACCGCTCCACATCGAGAAGACCCTCATGCTGAATGAGGA
 CAAGCCATCCGATGACTACTCTGCGGTGCTGCAGCGGCTTCGGAAGATCTACCACTCATCCATCAAGCCT
 CTGGAGCAGTCTACAAGTACAATGAGCTCCGGCAGCATGAGATCACAGATGGAGAGATTACCTCCAAGC
 CCATGGTACTGTTCTGGGACCGTGGAGTGTGGTAAATCTACCATGATAAACTACCTCCTTGGGCTGGA
 AAATACTCGTATCAGCTCTATACAGGCGCTGAACCCACCACCTCTGAGTTCACGGTCTCATGCATGGG
 CCTAAGCTGAAAACCATCGAGGGCATCGTCATGGCTGCTGACAGCGCCGTTCTTCTCACCCCTTGAGA
 AGTTTGGCCAGAATTTCTAGAGAAGCTGATTGGCATTGAGGTTCCCCACAAACTTCTGGAGAGGGTCAC
 TTTTGTGGATACACCAGGCATCATCGAGAACCGAAGCAGCAAGAAAGAGGCTACCCCTTCAACGACGTG
 TGCCAGTGGTTTATCGACAGAGCTGACCTCATCTTTGTCGTCTTTGACCCAAACAAAGCTGGATGTGGGTC
 TAGAGCTGGAGATGCTCTTCCGCCAGTTGAAGGGCGTGAATCCCAGATAAGGATCATCTGAACAAGGC
 TGACAATCTGGCCACCCAAATGCTCATGCGGGTTTACGGGGCCCTCTTCTGGAGCTTGGCCCTCTCATC
 AATGTCACAGAGCCCCAAGGGTTTACGTCAGCTCCTTCTGGCCACAAGAGTATAAGCCGGACCCCATC
 AGGAAGTGTCTCCAAGAAGAGATCTCCCTCTAGAAGACCTGAATCAGGTGATCGAGAACAGACTGGA
 GAACAAGATTGCCTTATCCGCCAGCAGCCATCCGGTCCGCATCCACGCCCTCCTGGTTGACCGCTAC
 CTGCAGACTTACAAGGACAAAATGACCTTCTTCAGTGATGGAGAACTGGTCTTAAAGGACATTGTGAAG
 ATCCCGATAAATTCTACATCTTCAAGACCATCTGGCAAAGACCAATGTCAGCAAATTTGACCTTCCCAA
 CCGCGAGGCCTATAAGGACTTCTTCGGCATCAATCCCATTTCAGTTTCAAACCTGCTCTCCAGCAGTGC
 TCTACATGGGAGTTGCTTTCTGGAGAAGATTGAGCGGGCCATCACTCAGGAGCTTCCGGGCTCCTGG
 GTAGCCTCGGGCTCGGAAGAATCCAGGTGCTCTCAACTGTGACAAAACAGGGTGTAGCGAAACACCAAA
 AAATCGCTACAGGAAGCAC

ACGCGTACGCGGCCGCTCGAGCAGAAACTCATCTCAGAAGAGGATCTGGCAGCAAATGATATCTGGATT
 ACAAGGATGACGACGATAAGGTTTAA

Protein Sequence:

>RC214041 representing NM_001098814
 Red=Cloning site Green=Tags(s)

MRALVLLGCLLASLLFSGQAEETEDANEEAPLRDRSHIEKTLMLNEDKPSDDYSAVLQRLRKIYHSSIKP
 LEQSYKYNELRQHEITDGEITSKPMVFLGPWSVGKSTMINYLLGLENTYQLYTGAEPPTSEFTVLMHG
 PKLKTIEGIVMAADSARSFSPLEKFGQNFLEKLGIEVPHKLLERVTFVDTPGIENRKQQERGYPFNDV
 CQWFIDRADLIFVVFDPKLDVGLLEMLFRQLGRESQIRIILNKADNLATQMLMRVYGALFWSLAPLI
 NVTEPPRVYVSSFWPQYKPDTHQELFLQEEISLLEDLNQVIENRLENKIAFIRQHAIRVRIHALLVDYR
 LQTYKDKMTFFSDGELVFKDIVEDPKFYIFKTIKAKTNVSKFDLPNREAYKDFGINPISSFKLLSQQC
 SYMGGCFLEKIERAITQELPGLLGSLLGKNPGALNCDKTGCSETPKNRYRKH

TRTRPLEQKLISEEDLAANDILDYKDDDDKV

Chromatograms:

https://cdn.origene.com/chromatograms/mk8029_b02.zip

Restriction Sites:

Sgfl-Mlul

Cloning Scheme:



ACCN: NM_001098814

ORF Size: 1419 bp

OTI Disclaimer: The molecular sequence of this clone aligns with the gene accession number as a point of reference only. However, individual transcript sequences of the same gene can differ through naturally occurring variations (e.g. polymorphisms), each with its own valid existence. This clone is substantially in agreement with the reference, but a complete review of all prevailing variants is recommended prior to use. [More info](#)

OTI Annotation: This clone was engineered to express the complete ORF with an expression tag. Expression varies depending on the nature of the gene.

Components: The ORF clone is ion-exchange column purified and shipped in a 2D barcoded Matrix tube containing 10ug of transfection-ready, dried plasmid DNA (reconstitute with 100 ul of water).

Reconstitution Method:

1. Centrifuge at 5,000xg for 5min.
2. Carefully open the tube and add 100ul of sterile water to dissolve the DNA.
3. Close the tube and incubate for 10 minutes at room temperature.
4. Briefly vortex the tube and then do a quick spin (less than 5000xg) to concentrate the liquid at the bottom.
5. Store the suspended plasmid at -20°C. The DNA is stable for at least one year from date of shipping when stored at -20°C.

Note: Plasmids are not sterile. For experiments where strict sterility is required, filtration with 0.22um filter is required.

RefSeq: [NM_001098814.2](#)

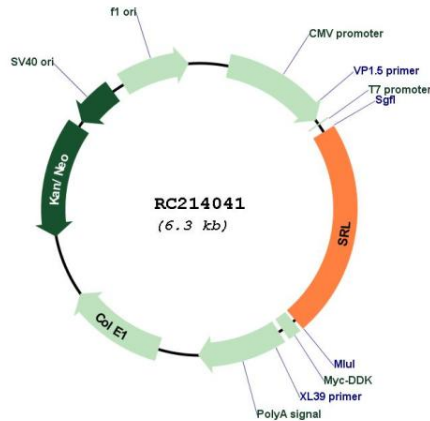
RefSeq Size: 4219 bp

RefSeq ORF: 1422 bp

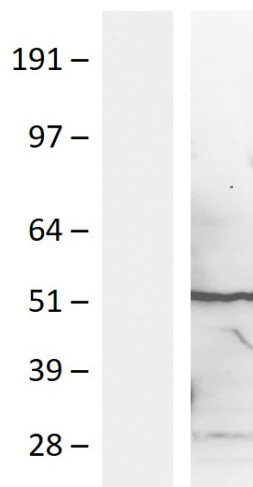
Locus ID: 6345

UniProt ID: [Q86TD4](#)
 Cytogenetics: 16p13.3
 MW: 54.3 kDa
 Gene Summary: May be involved in the regulation of calcium transport.[UniProtKB/Swiss-Prot Function]

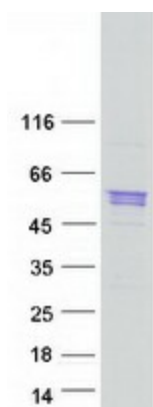
Product images:



Circular map for RC214041



Western blot validation of overexpression lysate (Cat# [LY420346]) using anti-DDK antibody (Cat# [TA592569]). Left: Cell lysates from untransfected HEK293T cells; Right: Cell lysates from HEK293T cells transfected with RC214041 using transfection reagent PEI.



Coomassie blue staining of purified SRL protein (Cat# [TP314041]). The protein was produced from HEK293T cells transfected with SRL cDNA clone (Cat# RC214041) using MegaTran 2.0 (Cat# [TT210002]).