

Product datasheet for RC214038

EMILIN2 (NM_032048) Human Tagged ORF Clone

Product data:

Product Type:	Expression Plasmids
Product Name:	EMILIN2 (NM_032048) Human Tagged ORF Clone
Tag:	Myc-DDK
Symbol:	EMILIN2
Synonyms:	EMILIN-2; FOAP-10
Mammalian Cell Selection:	Neomycin
Vector:	pCMV6-Entry (PS100001)
E. coli Selection:	Kanamycin (25 ug/mL)
ORF Nucleotide Sequence:	>RC214038 representing NM_032048 Red=Cloning site Blue=ORF Green=Tags(s)

TTTTGTAATACGACTCACTATAGGGCGGCCGGAATTCGTCGACTGGATCCGGTACCGAGGAGATCTGCC
GCC**CGATCGCC**

ATGTGGCAGCCCAGACGGCCCTGGCCCCGCGTGCCTGGCGCTGGGCGCTGGCGCTGCTGGCCCTGGTTG
GCGCGGGGCTGTGCCACGCCGGCCCGCAGCCGGGTATCCCGCGGGCCAGCGCCAGGAACAAGAAGT
GTGCGCTACATCGTGAACAAGAATGTGAGCTGCTCCGTGCTGGAGGGAAGTGAAGTATTTATTCAGGCT
CAGTACAAGTGTGCTGGAACCAGATGCCCTGTCCGTGGCGCTGGTGTATCGAGTGAATTCAGACCTA
GATATGCTACTAGGTATAAGACAGTGACACAGTTGGAATGGAGGTGCTGTCTGGCTTTAGAGGGGAGA
TTGCCAAGAAGGTCCCAAGACCCCGTGAAGACCCCTCCGCCCCAGCCGGCTCGGCCTCGAAATAGCTTG
AAGAAAGCCACAGATAATGAACCCAGCCAATTCTCAGAGCCCAGGAAGACTTTGTCCCAACTGGTACAG
CACAACCAAGCTGGGGGTAGATCCAAAAGAGGGGCTCAGGAATTCAGGAAAAGAAGATACAGGTGCT
AGAGGAGAAGGTTCTTCGACTACAAGGACGGTCTTGACCTCCAGTCTTCCCTTGGTGGAGTGAGTGAA
AATCTCAAACATGCCACTCAGGATGATGCCAGTAGAACACGGGCACCAGGGCTCAGCAGCCAGCACCCCA
AGCCTGACACCACTGTTAGTGGAGACACAGAAACGGGCCAGAGTCTGGTGTCTTCAACACTAAGGAATC
TGGCATGAAGGACATCAAGTCTGAATTGGCTGAAGTCAAAGATACTCTAAAGAACAAAAGTGACAAGCTG
GAAGACTGGATGAAAAGTGAAGGGCTACGAAGGGCAGCTCAGACAGCTCCAGGAAGCAGCTCAGGGCC
CGACGGTGACCATGACAACCAACGAACTTACCAAGCCTATGTGGACAGTAAGATCGACGCCTGAGAGA
GGAGCTCATGGAGGCATGGACAGAAAGCTGGCTGACCTGAAAAACTCATGTGAGTACAAGCTCACTGGC
CTCCAGCAGCAGTGTGATGACTATGGGAGCAGCTACCTGGGAGTGATAGAGCTCATAGGGGAGAAGGAAA
CAAGCCTGAGAAAAGAAATAAATAACCTCCGAGCCGGCTACAGGAGCCTTACGCCAGGCAAAATTGCTG
CGACAGTGAAGAAGTGGTGAATTGGTCAACAGATCAAGACATTGGACCAGAAAATCGAGAGAGTTGCT
GAAGCCACCAGAATGCTGAATGGAAGACTGGACAATGAGTTTGACCGCTTATAGTTCCAGAGCCAGATG
TGGATTTTATGCAAAAATGGAATGAACTCGATGCAAGGATCAATGTGACGGAGAAGAACGCTGAAGAACA
TTGCTTTTACATTGAGGAAACCCTTCGGGGCGCCATTAATGGAGAGGTGGGTGACTTGAAGCAGCTTGT



[View online »](#)

GATCAGAAAATACAGTCTCTGGAAGACCGTCTGGGGAGCGTTCTCCTACAGATGACCAATAACACTGGTG
 CAGAGCTCAGTCCCCAGGGGCAGCAGCCCTGCCAGGAGTGTGAGGGTCAGGAGATGAACGGGTCATGAT
 GGAATTAACACCTGAAGGACAAAAGTTCAAGTTGTTGAAGACATTTGCCTGCTGAACATCCAGGGAAAAG
 CCTCATGGGATGGAAGGTGCCTTGCCAAACAGGGAAGACCGCGCAGTACGCGACAGCCTGCACCTTTTGA
 AATCTCTCAACGACACGATGCACAGGAAGTTTCAAGAAACCGAACAAACCATCCAGAACTTCAACAGGA
 TTTTAGTTTTCTTTATTCTCAATTAACACACAGAAAATGATGTGACTCATCTTCAAAAAGAAAATGAGC
 AATTGTAGAGCAGGTGAAAACGCTGGCATGGGTAGGTTCACTAAGGTGGGTGAGCAAGAAAGGACAGTGG
 ACACCTGCCGTCCCCCAGCACCCCGTGGCTCATTGCTGCAGTACGCTGGAGGAGAGGTGGCAGAGGTT
 GCAGAGCCAGGTATCTCGGAGCTGGATGCTTGTAAAGGAATGCACGCAGGGGGTCCAGAGGGAGGTCTCC
 ATGGTGGAGGGCAGGGTGTCTCATATGGAGAAAACCTGCAGCAAGCTGGACTCTATCTCAGGAAATCTTC
 AGAGGATCAAGGAGGGGCTCAACAAGCATGTCAGCAGCCTGTGGAACGTGTGTCAGGCAGATGAACGGAAC
 GCTCAGGTGCGATTCCAGAGACATTTCTGGCCTGAAGAATTCAGTCCAGCAGTTCTACAGCCACGTCTTC
 CAGATTTCTACTGATTTGCAAGATCTGGTCAAATTTACGCCATCAGCAAAGGCACCCTCGCCCCGCCGC
 CCGCAGAGGCCCGAAGGAGCCGCTGCAGCCCAGCCCGCCCGCAGGAGGCGCCAGCGCCCCGAACCGC
 AGAGGACCTGGGCGACGCCCTCTGCCCCAGCGGCCCGCCGAGGAGGCGCCCGCCAGCCGCCAGGC
 TCCACCGGGTATCGCGGAGACGGGCCAGGCCGGGCCCGCCGAGGCGCAGGCGTGTCTGGGCGGGGTC
 TGCCGCGGGGCGTGGACGGCCAGACCGGGAGCGGCACCCTCCCCGGCGCAGAAGGCTTCGCGGGCGCACC
 AGGATACCCGAAGTACCTCCTGTAGCTTCCCCAGGAGCTCCGGTGCCTTCTCTGGTGTCTTTTTCTGCG
 GGGCTACCCAGAAGCCTTTCCCAAGTATGGGGCGTTGTCTCTTTAACAAAGTGTGGTGAACGACG
 GGGATGTTTAAACCCAGCACCAGGGGTCTTACCGGCTCCTTATGATGGGCGTACCTGATCAGGCCAC
 CCTACCCCGAGAGAGACGCCTACGTGGAAGCAGTGTGTGGTCTCCAACGCCAGCGTGGCCAGCTG
 CATACCGCTGGGTACAGGAGAGATTCCTGGAATACCACCGCCCTCCAGGAGCTTTGCATACCTGCGGGG
 GCCCGGGGCATTCCACCTCATCGTGCACCTGAAGGCGGGAGATGCAGTCAACGTCGTGGTGACTGGGGG
 CAAGCTGGCTCACACAGACTTTGATGAAATGTACTCCACATTTAGTGGGGTTTTCTTATATCCTTTCTTC
 TCCCACCTC

ACGCGTACGCGGCCGCTCGAGCAGAAACTCATCTCAGAAGAGGATCTGGCAGCAATGATATCCTGGATT
 ACAAGGATGACGACGATAAGGTTTAA

Protein Sequence:

>RC214038 representing NM_032048

Red=Cloning site Green=Tags(s)

MWQPRRPWPVPWRWALALLALVAGLCHAGPQPYPARPSARNKNWCAYIVNKNVSCSVLEGSEFIQA
 QYNCAWNQMPCSALVYRVNFRPRYVTRYKTVTQLEWRCCPFRGGDCQEGPKDPVKTLRPTPARPRNSL
 KKATDNEPSQFSEPRKTLSPGTGAQPSWGVDPKQELQEKKIQVLEEKVLRRLTRTVLDLQSSLAGVSE
 NLKHATQDDASRTRAPGLSSQHPKPDTTVSGDTEGTQSPGVFNTKESGMKDIKSELAEVKDTLKNKSDKL
 EELDGVKGYEQLRQLQEAQAQPTVTMTNELYQAYVDSKIDALREELMEGMDRKLADLKNKSCYKLTG
 LQQQCDDYGSYLGVIELIGEKETSLRKEINNLRARLQEPSAQANCCDSEKNGDIGQQIKTLQKIERVA
 EATRMLNGRLDNEFDRLIVPEPDVDFDAKWNELDARINVTEKNAEEHCFYIEETLRGAINGEVGDLKQLV
 DQKIQSLEDRLGSVLLQMTNNTGAELSPGAAALPGVSGSDEVMELNHLKDKVQVVEDICLLNIQGGK
 PHGMEGALPNREDRAVRDSLHLLKSLNDTMHRKFQETEQTIQKLQQDFSLYSQNLNHTENDVTHLQKEMS
 NCRAGENAGMGRFTKVGEQERTVDLTPSPQHPVAHCCSQLEERWQLQSQVISELDACKECTQGVQREVS
 MVEGRVSHMEKTCCKLDSISGNLQRIKEGLNKHVSSLWNCVQRQMNGTLRSHSRDISGLKNSVQQFYSHVF
 QISTDLQDLVKFQPSAKAPSPPPPAEAPKEPLQPEPAPPRPSGPATAEDPGRRPVLQRPPEERPPQPPG
 STGVIAETGQAGPPAGAVSGRGLPRVDGQTGSGTVPGAEGFAGAPGYPKSPPVASPGAPVPSLVSFSA
 GLTQKPFPSDGGVVLFNKVLVNDGDVYNPSTGVFTAPYDGRYLITATLTPERDAYVEAVLSVSNASVAQL
 HTAGYRREFLEYHRPPGALHTCGPGAFHLIVHLKAGDAVNVVVTGGKLAHTDFDEMYSYTFSGVFLYPPFL
 SHL

TRTRPLEQKLISEEDLAANDILDYKDDDDKV

Chromatograms:

https://cdn.origene.com/chromatograms/mg4226_c01.zip

Restriction Sites: SgfI-MluI

Cloning Scheme:



ACCN: NM_032048

ORF Size: 3159 bp

OTI Disclaimer: Due to the inherent nature of this plasmid, standard methods to replicate additional amounts of DNA in E. coli are highly likely to result in mutations and/or rearrangements. Therefore, OriGene does not guarantee the capability to replicate this plasmid DNA. Additional amounts of DNA can be purchased from OriGene with batch-specific, full-sequence verification at a reduced cost. Please contact our customer care team at custsupport@origene.com or by calling 301.340.3188 option 3 for pricing and delivery.

The molecular sequence of this clone aligns with the gene accession number as a point of reference only. However, individual transcript sequences of the same gene can differ through naturally occurring variations (e.g. polymorphisms), each with its own valid existence. This clone is substantially in agreement with the reference, but a complete review of all prevailing variants is recommended prior to use. [More info](#)

OTI Annotation: This clone was engineered to express the complete ORF with an expression tag. Expression varies depending on the nature of the gene.

Components: The ORF clone is ion-exchange column purified and shipped in a 2D barcoded Matrix tube containing 10ug of transfection-ready, dried plasmid DNA (reconstitute with 100 ul of water).

Reconstitution Method:

1. Centrifuge at 5,000xg for 5min.
2. Carefully open the tube and add 100ul of sterile water to dissolve the DNA.
3. Close the tube and incubate for 10 minutes at room temperature.
4. Briefly vortex the tube and then do a quick spin (less than 5000xg) to concentrate the liquid at the bottom.
5. Store the suspended plasmid at -20°C. The DNA is stable for at least one year from date of shipping when stored at -20°C.

Note: Plasmids are not sterile. For experiments where strict sterility is required, filtration with 0.22um filter is required.

RefSeq: [NM_032048.3](#)

RefSeq Size: 4009 bp

RefSeq ORF: 3162 bp

Locus ID: 84034

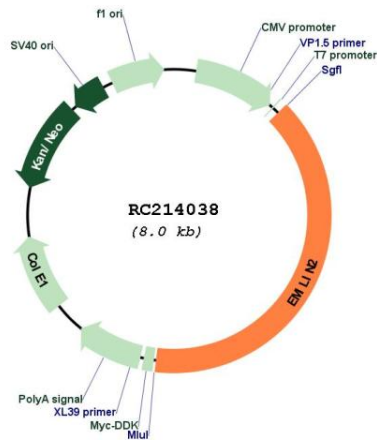
UniProt ID: [Q9BXX0](#)

Cytogenetics: 18p11.32-p11.31

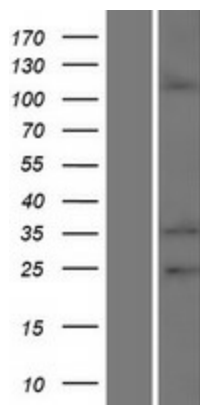
MW: 115.5 kDa

Gene Summary: May be responsible for anchoring smooth muscle cells to elastic fibers, and may be involved not only in the formation of the elastic fiber, but also in the processes that regulate vessel assembly. Has cell adhesive capacity.[UniProtKB/Swiss-Prot Function]

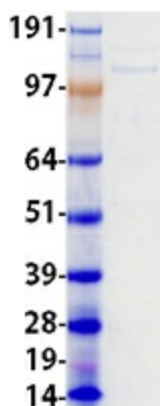
Product images:



Circular map for RC214038



Western blot validation of overexpression lysate (Cat# [LY410362]) using anti-DDK antibody (Cat# [TA50011-100]). Left: Cell lysates from untransfected HEK293T cells; Right: Cell lysates from HEK293T cells transfected with RC214038 using transfection reagent MegaTran 2.0 (Cat# [TT210002]).



Coomassie blue staining of purified EMILIN2 protein (Cat# [TP314038]). The protein was produced from HEK293T cells transfected with EMILIN2 cDNA clone (Cat# RC214038) using MegaTran 2.0 (Cat# [TT210002]).