

Product datasheet for RC214034

HERC3 (NM_014606) Human Tagged ORF Clone

Product data:

Product Type:	Expression Plasmids
Product Name:	HERC3 (NM_014606) Human Tagged ORF Clone
Tag:	Myc-DDK
Symbol:	HERC3
Synonyms:	KIAA0032
Vector:	pCMV6-Entry (PS100001)
E. coli Selection:	Kanamycin (25 ug/mL)
Cell Selection:	Neomycin
ORF Nucleotide Sequence:	>RC214034 representing NM_014606 Red=Cloning site Blue=ORF Green=Tags(s)

TTTTGTAATACGACTCACTATAGGGCGCCGGAATTCGTCGACTGGATCCGGTACCGAGGAGATCTGCC
GCCGCGATCGCC

ATGTTATGTTGGGGATATTGGTCTCTGGGCCAACCTGGTATCAGCACCAACCTGCAGGGAATTGTGGCTG
AGCCCCAGGTGTGTGGGTTCATATCTGACAGAAGTGTCAAGGAAGTGGCCTGTGGGGAAACCCTCTGT
GTTCTCTGTTGGAAGATGGGAAGTTTACACATGTGGTTTGAACACCAAGGGCAACTGGGCCATGAGAGG
GAAGGAAACAAGCCAGAACAATTGGAGCTCTGGCAGATCAGCATATCATTTCATGTGGCATGTGGCGAGT
CCCACAGTCTGGCCCTCAGTGACCGAGGCCAGCTGTTTTCTTGGGGTGCAGGGAGTGATGGTCAGCTAGG
ACTCATGACTACTGAGGATTCTGTGGCAGTGCCAGGTTAATACAAAAGCTGAACCAGCAACAATATTA
CAAGTTTCTGTGGCAACTGGCATTGCTTGGCTCTTGGCGCTGATGGCCAGTTCTTCACCTGGGGAAAGA
ACAGCCATGGGCAGCTTGGCTTAGGGAAGGAGTCCCCTCCCAAGCCAGCCACAGAGGGTGAGGTCCCT
GGAGGGGATCCCCTGGCTCAGGTGGCTGCCGGAGGGGCTCACAGCTTTGCCCTGTCTCTCAGGAGCT
GTTTTTGGCTGGGGATGAATAATGCCGGCAGCTAGGGCTCAGTGATGAAAAAGATCGAGAATCTCCAT
CACAAAGAGTGGAGGTGTGTTACCTTTGGCGCTGGTTCCCTGTGGCAACTTGGACACGACTCCATGAAT
GATGAGGTTAACCTAGAAGAGTTCTAGAGCTGATGGGTAGTGAAGTAACTCAAATGCTTGTGGCAGAC
AACATACCCTAGCCTTCTGCTCTTCTGGACTCATCTATGCATTTGGTTGTGGAGCAAGAGGTCAATT
AGGAACTGGGCACACTTGAATGTTAAGTCCCCATCTCTGTCAAGGGTACTGGGCTGCCACAGTGCC
CAGCTTTCAGCCCGAGCTGATCGCTTTAAATATCATATCGTTAAGCAGATCTTCTCTGGAGGAGACCAGA
CTTTTGTACTTTGCTCCAATACGAGAATTATTCTCTGCTGTTGACTTCAGGACTATGAACCAAGCACA
TTATACCAGTTTAAATAATGATGAAACCATAGCAGTTTGGAGACAAAACTCTCAGAACACAACAATGCA
AATACAATCAATGGTGTGTTTCAGATATTATCTTCTGCAGCCTGTTGGAATGGAAGTTTCTTGAAAAA
AAATTGATGAACATTTTAAAACGAGTCCAAAAATCCCTGGGATTGACCTGAACTCAACTAGGGTGTATT
TGAGAAGTTAATGAACTCTCAGCACTCCATGATTCTAGAACAGATTTTGAACAGTTTGAAGTTGTCTG
ATTCCCAGTTGTCAAGCTCACCACCAGATGTTGAAGCCATGAGAATCTATTTAATACTACCTGAGTTTC



[View online »](#)

CCCTACTCCAGGATTCCAAGTATTATATAACATTGACTATTCCCTTGGCTATGGCCATTCTTCGGCTGGA
TACAAACCCAGCAAAGTACTAGATAACTGGTGGTCTCAGGTATGCCCGAAATATTTTCATGAAGCTGGTA
AACCTCTATAAAGGTGCAGTCTTTATCTACTGAGGGGAAGAAAGACATTCTTAATCCCCTACTGTTTA
ACAATTATACACAGCAGCTCTCAAACCTTTGGAGAAGTTATATAAGGTAATCTTAAAGTGAAGCATGT
GGAATATGATACATTTTACATTCCTGAGATTTCCAATCTCGTGGACATTCAGGAAGACTACCTCATGTGG
TTCTTGCATCAAGCAGGGATGAAGGCTAGACCATCAATAACAGGATACTGTAACACTTTGTTCTTACC
CTTTCATCTTTGATGCCCAAGCCAAGACCAAAATGTTACAGACAGATGCTGAACACTACAGATGCAGGTGGC
AGTCAATGGAGCCAACCTGCAGAATGTCTTCATGCTTCTCACCCCTGGAGCCTCTGCTGGCCAGAAGCCCC
TTCTTGGTCTTTCACGTTTCGAGGAACAACCTTGTGGAGATGCCCTAAGAGAGCTGAGCATTCTTCTG
ATATTGATTTGAAAAAGCCTCTCAAAGTAACTTTGATGGTGAAGAAGCAGTGGATGCCGGTGGTGTAC
AAAGGAATTTTTCTTTGCTGTAAAAGAAGCTTTTGAATCCCCTATGGAATGTTTACCTACTATCAA
GATTCAAATCTCTTGTGGTTTTTCAGACACGTGTTTTGTAGAGCACAAGCTGGTTTCACTTGATTGTATAA
CCTGTGGACTAGCTATCTACAACCTCCACTGTGGTTCGATCTCCACTTCCCATTGGCTCTCTACAAGAAGT
ACTCAATGTAAGCCTGGCTTGAAGACTTAAAGGAGTTGTACCCACTGAAGGAAGGAGTCTCCAAGAG
CTTTTGGATTACCCGGGAGGATGTGGAGGAGACTTTCTGCCTCAACTCACGATCTGCCGAGAAAAGCT
ATGGAGTGATTGAACAGAAGAAGCTGATACCTGGGGGAGATAATGTAACGTGTGCAAGGATAACAGGCA
GGAATTTGTGGATGCTTATGTGAATTATGTCTTCAAATCTCAGTTCATGAATGGTACACAGCCTTCTCT
AGTGGCTTCTAAAGGTGTGGTGGCAAAGTACTTGGCTCTTCCAGCCTTCAAGACTGAGGGCTATGA
TGGTGGGGAACAGCAACTACAACGGGAAGACTGCAAGAGACTGCCATCTACAAGGAGATTACTCGGC
CACACATCCCCTGTAAAACATTTTGGGAAACATTTTCATGAGTTTCCATTGGAAAAGAAGAAGAAGTTT
CTCTTGTCTGACAGGCAGCGATCGGATTTCCATCTACGGCATGGCCAGTCTGCAGATTGTCATCCAGT
CCACAGCCAGCGGGGAGGACTTGGCGGTGGCCCACTTGTACAACCTTCTTGACCTCCCCAAGTA
CAGCAGCAAAGAGATTCTGAGTGCCCGGCTGACCCAGGCCCTTGACAACATATGAAGGGTTTAGTTTGGCC

ACGCGTACGCGGCCGCTCGAGCAGAACTCATCTCAGAAGAGGATCTGGCAGCAAATGATATCCTGGATT
ACAAGGATGACGACGATAAGGTTTAA

Protein Sequence:

>RC214034 representing NM_014606
Red=Cloning site Green=Tags(s)

MLCWGYWSLQPGIISTNLQGIIVAEQVCGFISDRSVKEVACGGNHSVFLLEDGEVYTCGLNKGQLGHER
EGNKPEQIGALADQHIHIVACGESHSLSALSDRGQLFSWAGSDGQLGLMTTEDSVAVPRLIQKLNQQTIL
QVSCGNWHCLALAADGQFFTWGKNSHGQLGLGKEFPSQASPQRVRSLEGIPLAQVAAGGAHSFALSLSGA
VFGWGMNAGQLGLSDEKDRESPCHVKLLRTQKVYVYISCGEEHTAVLTKSGGVFTFGAGSCGQLGHDSMN
DEVNPRRVLELMGSEVTQIACGRQHTLAFVPSSGLIYAFGCGARGQLGTGHTCNVKCPSPVKGYWAAHSG
QLSARADRFKYHIVKQIFSGGDQTFVLCSEYENYSPAVDFRTMNQAHYTSLINDETIQVWRQKLSEHNNA
NTINGVVQILSSAACWNGSFLEKKIDEHFKTSKIPGIDLNSTRVLFKLMNSQHSMMILEQILNSFESCL
IPQLSSSPDVEAMRIYLILPEFLLQDSKYYITLTIPLAMAILRLDTNPSKVLDNWWSQVCPKYMFKLV
NLYKGAVLYLLRGRKTFILPVLFNNTAALKLLEKLYKYNLKVHVEYDTFYIPEISNLVDIQEDYLMW
FLHQAGMKARPSIIQDVTVLCSEYPIFDQAQTKMLQTDDELQMQVAVNGANLQNVFMLLTLEPLLARSP
FLVLHVRNRLVGDALRELSIHSDIDLKPLKVIDGEEAVDAGGVTKEFFLLLLKELNPIYGMFTYYQ
DSNLLWFSDTCFVEHNWFHLIGITCGLAIYNSTVVDLHFPLALYKLLNVKPGLEDLKELSPTTEGRSLQE
LLDYPGEDVEETFCLNFTICRESYGVIEQKLLIPGGDNVTCKDNRQEFVDAVYVYVQISVHEWYAFS
SGFLKVCVGGVLELFPSELRAMMVGNSNYNWEELQETAIYKGDYSATHPTVKLFWETTFHEFPLEKKKK
LLFLTGSDRIPIYGMASLQIVIQSTASGEEYLPVAHTCYNLLDLPKYSSKEILSARLTQALDNYEGFSLA

TRTRPLEQKLISEEDLAANDILDYKDDDDKV

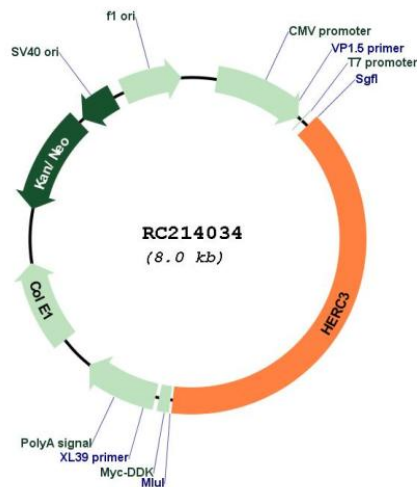
Chromatograms:

https://cdn.origene.com/chromatograms/mk6612_e06.zip

Restriction Sites:

Sgfl-Mlul

Cloning Scheme:

Plasmid Map:

ACCN:

NM_014606

ORF Size:

3150 bp

OTI Disclaimer:

The molecular sequence of this clone aligns with the gene accession number as a point of reference only. However, individual transcript sequences of the same gene can differ through naturally occurring variations (e.g. polymorphisms), each with its own valid existence. This clone is substantially in agreement with the reference, but a complete review of all prevailing variants is recommended prior to use. [More info](#)

OTI Annotation:

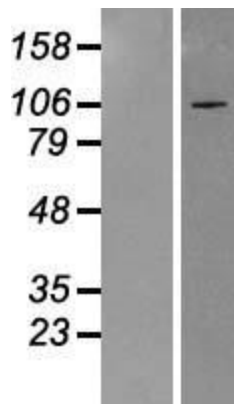
This clone was engineered to express the complete ORF with an expression tag. Expression varies depending on the nature of the gene.

RefSeq: [NM_014606.1](#), [NM_014606.2](#), [NP_055421.1](#)
RefSeq Size: 4894 bp
RefSeq ORF: 3153 bp
Locus ID: 8916
Domains: RCC1, HECT

Protein Families: Druggable Genome
Protein Pathways: Ubiquitin mediated proteolysis
MW: 117 kDa

Gene Summary: This gene encodes a member the HERC ubiquitin ligase family. The encoded protein is located in the cytosol and binds ubiquitin via a HECT domain. Mutations in this gene have been associated with colorectal and gastric carcinomas. Alternatively spliced transcript variants encoding multiple isoforms have been observed for this gene. [provided by RefSeq, Oct 2012]

Product images:



Western blot validation of overexpression lysate (Cat# [LY415160]) using anti-DDK antibody (Cat# [TA50011-100]). Left: Cell lysates from untransfected HEK293T cells; Right: Cell lysates from HEK293T cells transfected with RC214034 using transfection reagent MegaTran 2.0 (Cat# [TT210002]).