

## Product datasheet for **RC214033**

### **PNLIPRP3 (NM\_001011709) Human Tagged ORF Clone**

#### **Product data:**

Product Type:	Expression Plasmids
Product Name:	PNLIPRP3 (NM_001011709) Human Tagged ORF Clone
Tag:	Myc-DDK
Symbol:	PNLIPRP3
Mammalian Cell Selection:	Neomycin
Vector:	pCMV6-Entry (PS100001)
E. coli Selection:	Kanamycin (25 ug/mL)



[View online »](#)

**ORF Nucleotide Sequence:**

>RC214033 representing NM\_001011709  
 Red=Cloning site Blue=ORF Green=Tags(s)

TTTTGTAATACGACTCACTATAGGGCGGCCGGAATTCGTCGACTGGATCCGGTACCGAGGAGATCTGCC  
 GCC**GCGATCGCC**

ATGCTTGGAAATTTGGATTGTTGCATTCTTGTCTTTGGCACATCAAGAGGAAAAGAAGTTTGTATGAAA  
 GGTTAGGGTGTTCAAAGATGGTTTACCATGGACCAGGACTTTCTCAACAGAGTTGGTAGGTTTACCCTG  
 GTCTCCAGAGAAGATAAACACTCGTTTCTGCTCTACACTATACACAATCCCAATGCCTATCAGGAGATC  
 AGTGCGGTTAATCTTCAACTATCCAAGCCTCATATTTTGAACAGACAAGATCACCCGTATCAACATAG  
 CTGGATGGAAAACAGATGGCAAATGGCAGAGAGACATGTGCAATGTGTTGCTACAGCTGGAAGATATAAA  
 TTGCATTAATTTAGATTGGATCAACGGTTCACGGGAATACATCCATGCTGTAAACAATCTCCGTGTGTT  
 GGTGCTGAGGTGGCTATTTTATTGATGTTCTCATGAAAAATTTGAATATCCCTTCTAAAGTGCCT  
 TGATTGGCCACAGCTTGGGAGCACCTGGCTGGGAAGCTGGTCAAGGATACCAGGCCTTGAAGAAT  
 AACTGGGTTGGACCCAGCTGGGCCATTTTCCACAACACTCCAAAGGAAGTCAGGCTAGACCCTCGGAT  
 GCCAATTTGTTGACGTTATTCATACAAATGCAGCTCGCATCCTCTTTGAGCTTGGTGTGGAACCATTTG  
 ATGCTTGTGGTCACTTACTTTTACCCAAATGGAGGGAAGCACATGCCAGGATGTGAAGACTTAATTAC  
 ACCTTTACTGAAATTTAACTTCAATGCTTACAAAAAGAAATGGCTTCTTCTTTGACTGTAACCATGCC  
 CGAAGTTATCAATTTTATGCTGAAAGCATTCTTAATCCTGATGCATTTATTGCTTATCCTGTAGATCCT  
 ACACATCTTTAAAGCAGGAAATGCTTCTTTGTTCCAAAGAAGGTTGCCCAACAATGGGTCATTTTGC  
 TGATAGATTTCACTTCAAAAATGAAGACTAATGGATCACATATTTTTTAAACACAGGGTCCCTTTCC  
 CCATTTGCCGTTGGAGGCACAAATGTCTGTTAACTCAGTGAAGCGAAGTCACTCAAGGAACGTCT  
 TTCTTCGTGAGCGGGCAATTGGGAAAACGGGGAGTTTCCATTGTCAGTGGAAAACCTGAGCCAGG  
 CATGACTTACACAAAATTAATCGATGCAGATGTTAACGTTGGAACATTACAAGTGTTCAGTTCATCTGG  
 AAAAAACATTTGTTGAAGATTCTCAGAATAAGTTGGGAGCAGAAATGGTGATAAATACATCTGGGAAAT  
 ATGGATATAAATCTACCTTCTGTAGCCAAGACATTATGGGACCTAATATTCTCCAGAACCTGAAACCATG  
 C

**ACGCGT**ACGCGGCCGCTCGAGCAGAAACTCATCTCAGAAGAGGATCTGGCAGCAAATGATATCCTGGATT  
 ACAAGGATGACGACGATAAGGTTTAA

**Protein Sequence:**

>RC214033 representing NM\_001011709  
 Red=Cloning site Green=Tags(s)

MLGIWIVAFLLFFGTSRGKEVCYERLGCFKDGLPWTRTFSTELVGLPWSPEKINTRFLLYTIHNPAYQEI  
 SAVNSSTIQASYFGTDKITRINIAGWKTDGKWQRDMCNVLLQLEDINCINLDWINGSREYIHAVNNLRV  
 GAEVAYFIDVLMKKFEYSPSKVHLIGHSLGAHLAGEAGSRIPGLGRITGLDPAGPFFHNTPKVRLDPSD  
 ANFVVDVIHTNAARILFELGVGTIDACGHLDFYPNGGKHMPGCEDLITPLLKFNFNAYKKEMASFFDCNHA  
 RSYQFYAESILNPDAFIAYPCRSYTSFKAGNCFCSKEGCPMTMGHFADRFHFKNMKTNGSHYFLNTGSL  
 PFARWRHKL SVKLSGSEVTQGTVFLRVGGAIGKTGEFAIVSGKLEPGMTYTKLIDADVNVGNITSVQFIW  
 KKHLFEDSQNKLGAEMVINTSGKYGYKSTFCSQDIMGPNILQNLKPC

**TR**TRPLEQKLISEEDLAANDILDYKDDDDKV

**Chromatograms:**

[https://cdn.origene.com/chromatograms/mk6603\\_c04.zip](https://cdn.origene.com/chromatograms/mk6603_c04.zip)

**Restriction Sites:**

Sgfl-Mlul

Cloning Scheme:



ACCN: NM\_001011709

ORF Size: 1401 bp

OTI Disclaimer: The molecular sequence of this clone aligns with the gene accession number as a point of reference only. However, individual transcript sequences of the same gene can differ through naturally occurring variations (e.g. polymorphisms), each with its own valid existence. This clone is substantially in agreement with the reference, but a complete review of all prevailing variants is recommended prior to use. [More info](#)

OTI Annotation: This clone was engineered to express the complete ORF with an expression tag. Expression varies depending on the nature of the gene.

Components: The ORF clone is ion-exchange column purified and shipped in a 2D barcoded Matrix tube containing 10ug of transfection-ready, dried plasmid DNA (reconstitute with 100 ul of water).

Reconstitution Method:

1. Centrifuge at 5,000xg for 5min.
2. Carefully open the tube and add 100ul of sterile water to dissolve the DNA.
3. Close the tube and incubate for 10 minutes at room temperature.
4. Briefly vortex the tube and then do a quick spin (less than 5000xg) to concentrate the liquid at the bottom.
5. Store the suspended plasmid at -20°C. The DNA is stable for at least one year from date of shipping when stored at -20°C.

Note: Plasmids are not sterile. For experiments where strict sterility is required, filtration with 0.22um filter is required.

RefSeq: [NM\\_001011709.3](#)

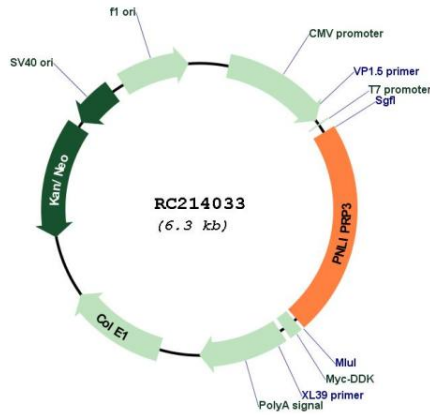
RefSeq Size: 2374 bp

RefSeq ORF: 1404 bp

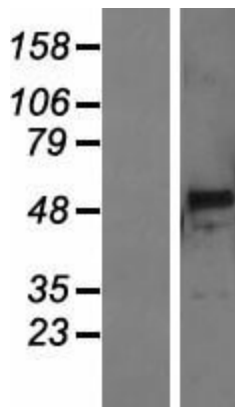
Locus ID: 119548

UniProt ID: [Q17RR3](#)  
 Cytogenetics: 10q25.3  
 Protein Families: Druggable Genome  
 MW: 52.1 kDa

**Product images:**



Circular map for RC214033



Western blot validation of overexpression lysate (Cat# [LY423298]) using anti-DDK antibody (Cat# [TA50011-100]). Left: Cell lysates from untransfected HEK293T cells; Right: Cell lysates from HEK293T cells transfected with RC214033 using transfection reagent MegaTran 2.0 (Cat# [TT210002]).