

## Product datasheet for **RC214028**

### CCDC141 (NM\_173648) Human Tagged ORF Clone

#### Product data:

Product Type:	Expression Plasmids
Product Name:	CCDC141 (NM_173648) Human Tagged ORF Clone
Tag:	Myc-DDK
Symbol:	CCDC141
Synonyms:	CAMDI
Mammalian Cell Selection:	Neomycin
Vector:	pCMV6-Entry (PS100001)
E. coli Selection:	Kanamycin (25 ug/mL)



[View online »](#)

**ORF Nucleotide Sequence:**

>RC214028 ORF sequence  
 Red=Cloning site Blue=ORF Green=Tags(s)

TTTTGTAATACGACTCACTATAGGGCGGCCGGAATTCGTGACTGGATCCGGTACCGAGGAGATCTGCC  
 GCC**CGATCGCC**

ATGCAGTTTCAGAGCTTAAAAGAATTTTATGAAACCGAAATCCCTCAGAAGGAGCAGGATGATGCTAAAG  
 CCAAGCATTGTTCTGACTCGGCTGAGAAGCAGTGGCAGCTATTTTTAAAGAAGAGTTTTATAACACAAGA  
 TCTAGGGCTTGAGTTCCTTAATTTAATAAATATGGCAAAAGAGAACGAGATATTAGATGTAAAAATGAA  
 GTGTACCTCATGAAGAACACCATGGAAAACAGAAAGCAGAACGGGAAGAAGCTTAGCCTCCTTCGGCTGG  
 CATGGCAGCTTAAAGCCACGAAAGCAAGCCTGGAAAACAGCAGTGGCGGCATTCAAAGAGCAACTTAA  
 AAAGACTTCTCACAACCTAAAACCTCTTCAGGAAGCACTTATGCCTGTGTCTGCACCTTGACCTCGGAGGG  
 AGCCTCCAGTTCATTTTAGATCTACGACAAAAATGGAATGACATGAAGCCTCAGTCCAGCAATTGAATG  
 ATGAGGTTCAGTACATTATGAAAGAATCAGAGGAGTAACTGGCAGAGGAGCCCTGTAAAAGAAAAGTC  
 TCAACAACCTGAAGGACCTTATTCACCTCCATCAAAAACAGAAAGAGAGAATCCAGGATTACGAGGATATC  
 CTGTACAAGGTGGTCCAGTTCATCAAGTCAAGGAAGAGCTGGGACGTCTCATCAAAATCAAGAGAGCTGG  
 AGTTTGTAGAGCAGCCGAAAGAACTGGGTGATGCCCATGATGTGCAGATTACCTCCGGTCTCTCAGGA  
 AAAGCAAGCCCGTAGACCATCTCCACAGACTGGCCCTTTCCTTAGGAGTCGACATCATCTCATCAGTG  
 CAGCGGCTCACTGCTCTAATGTTTCTGCAAAAGAACTACAGCAGCAGCTGGAGCTCCTTGAGGAGGACA  
 GCATGAAGTGGCGTGCCAAAGCTGAGGAGTATGGACGGACCCTGTCCCGTAGTGTGGAGTACTGCCCAT  
 GAGAGACGAGATAAATGAGCTCAAAGACTCATTCAAAGATATCAAAAAGAAATTCATAATTTGAAGTTT  
 AATTACACTAAGAAAAATGAAAAATCTCGGAATCTGAAGGCGCTTAAATATCAAATTCAGCAAGTTGATA  
 TGTATGCTGAAAAAATGCAGGCTTTGAAAAGGAAAAATGGAAAAAGTTAGTAATAAAACCTGATCTTT  
 CTTAAATTATCCAAGTGATAAAGTTAATGTCTTTTGGAAAGTCATGAAGGATTTGCAAAAACATGTGGAT  
 GACTTTGACAAAGTTGTGACAGATTACAAGAAGAAATTTGGACCTGACTGAGCATTTCAGGAGGTGATAG  
 AAGAGTGTCAATTTTGGTACGAAGATGCAAGTGCCACAGTTGTAAGAGTTGAAAAATATCCACAGAGTG  
 CAAGACAAAGGAAGCTGTGAAAATCTCCACCAGCAGTTAATAAGTTTATTGCACCCTCAGTGCCCGAG  
 CAAGAAGAAAGGATTGAGGAGCCACTGACCTTGCTCAGCACTTATATGGTTTGAAGAAGGACAGAAAT  
 ATATTGAGAAAAATAGTGACAAAACACAAAGAGGTTCTTGAATCTGTGACTGAATTATGTGAGTCCCTCAC  
 AGAGCTCGAAGAAAACTGAAGCAGGGAGATGTTTTAAAGATGAATCCGAATTTGAAGACTTCCATTAT  
 GATTACATTGACTTGCTAAAGGAACCAGCAAAAAATAAGCAGACAATATCAATGAAGAAAGGAATAAGG  
 GGCAGGTGCAGGTGGCAGATCTTTTGGCATCAATGGAACAGGGGAAGAGCGACTACCACAAGACCTGAA  
 GGTGTCCACTGACAAGGAGGGTGGCGTCCAGGACCTGCTCCTGCCTGAAGACATGCTCTCAGGGGAAGAA  
 TATGAGTGTGCTCACCTGATGACATCTCCTTGCCCTCCTCCCAGGAAGCCCTGAGTCCCCCTTGACAC  
 CATCTGACATGGAGGTGGAAGAGCCTGTGAGCTCCTCCCTCAGCCTTACATAAGCAGCTATGGGGTGCA  
 GGCTGGGACCAGCAGCCAGGGGATGCCAGGAATCTGTTCTTCCACCACCTGTTGCCTTTGCGGATGCA  
 TGCAATGATAAGAGAGAAACATTTTCAAGTCATTTTGAAGGCTTACCTCCAGTTCAAAGCTGAGCCCC  
 CACTAACCTCCAGAGGATTCGTGGAAAAGAGTACTGCCTTACACAGAATCAGTGTGAACATCCAGAGAG  
 CATGATGAGTGAAGTGCATGAGAGAGCTTACAGCAGCACCCCTCAGGCTCAGGGTGGTTTGTGCTAGAAACA  
 CGGGAGAAAAATGCATGCTGATAATAACTTCACTAAAACCCAAGTAGGCTGCATGCTTCTCTGATGCAT  
 TCTCGGGCCTCAGGTTTCAATCAGGCACCAGCAGGGGCTATCAGAGGCAAATGGTTCTCGAGAAGAGAT  
 TAAAAGCACATCAGCAAAGAGCAGCGTGGTCAGCCTAGCTGACCAGGCACCTAATTTCTCAGGCTCCTG  
 TCTAATGTAAGTGCATGGAAGGTTCTCCAGTACTTTGGAAGTTGAAGTAACAGGATTTCCAGAGCCTA  
 CACTGACATGGTGGTAGCCTATAATGACAAGCCA

**ACGCGT**ACGCGGCCGCTCGAGCAGAAACTCATCTCAGAAGAGGATCTGGCAGCAATGATATCTGGATT  
 ACAAGGATGACGACGATAAGGTTTAA

**Protein Sequence:** >RC214028 protein sequence  
 Red=Cloning site Green=Tags(s)

MQFQSLKEFYETEIPQKEQDDAKAKHCSDSAEKQWQLFLKKSFITQDLGLEFLNLINMAKENEILDVKNE  
 VYLMKNTMENQKAEREELSLLRLAWQLKATESKPGKQWAAFKEQLKKTSHNLKLLQEALMPVSALDLGG  
 SLQFILDLRQKWNMMPQFQQLNDEVQYIMKESEELTGRGAPVKEKSQQLKDLIHFHQKQKERIQDYEDI  
 LYKVVQFHQVKEELGRLIKSRELEFVEQPKELGDAHDVQIHLRCSQEKQARVDHLHRLALSLGVDIISV  
 QRPHCNSNVSANKLQQQLELLEEDSMKWRAKAEYGRTLRSRVEYCAMRDEINELKDSFKDIKKKFNNLKF  
 NYTKKNEKSRNLKALKYQIQVDMYAEKMQUALKRKMEKVSNTSDSFLNYPSPDKVNVLLVEMKDLQKHVD  
 DFDKVVTDYKKNLDELTEHFQEVIEECHFWYEDASATVVRVGKYSTECKTKEAVKILHQQFNKFIAPSV  
 PQQEERIQAETDLAQLYGLEEGQKYIEKIVTKHKEVLESVTELCESLTELKQGDVLMKMPNLEDFHY  
 DYIDLLKEPAKKNQTIIFNEERNKGVQVADLLGINGTGEERLPQDLKVSTDKEGGVQDLLLLPEDMLSGEE  
 YECVSPDDISLPLPGSPESPLAPSDMEVEEPVSSSLSHISSYGVQAGTSSPGDAQESVLPVAFADA  
 CNDKRETFSSHFERPYLQFKAEPPLTSRGFVEKSTALHRI SAEHPESMMSEVHERALQHPQAQGGLET  
 REKMHADNNTKTQDRLHASSDAFSGLRFQSGTSRGYQRQMPREEIKSTSAKSSVVSADQAPNFSRL  
 SNVTVMEGSPVTLEVEVTGFPEPTLTWVWAYNDKP

TRTRPLEQKLISEEDLAANDILDYKDDDDKV

**Chromatograms:** [https://cdn.origene.com/chromatograms/mk6561\\_b03.zip](https://cdn.origene.com/chromatograms/mk6561_b03.zip)

**Restriction Sites:** SgfI-MluI

**Cloning Scheme:**

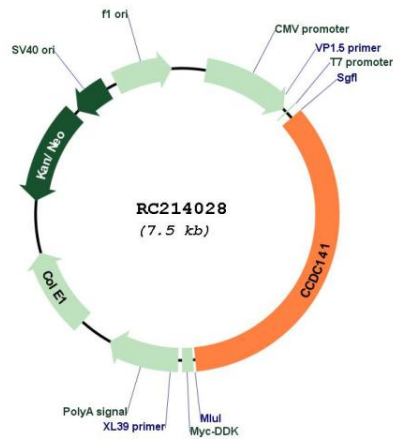
Cloning sites used for ORF Shuttling:



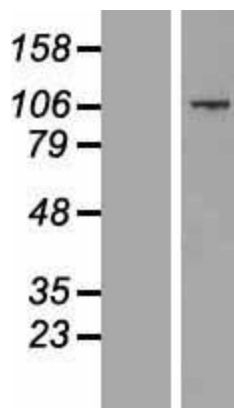
\* The last codon before the Stop codon of the ORF

<b>ACCN:</b>	NM_173648
<b>ORF Size:</b>	2625 bp
<b>OTI Disclaimer:</b>	The molecular sequence of this clone aligns with the gene accession number as a point of reference only. However, individual transcript sequences of the same gene can differ through naturally occurring variations (e.g. polymorphisms), each with its own valid existence. This clone is substantially in agreement with the reference, but a complete review of all prevailing variants is recommended prior to use. <a href="#">More info</a>
<b>OTI Annotation:</b>	This clone was engineered to express the complete ORF with an expression tag. Expression varies depending on the nature of the gene.
<b>Components:</b>	The ORF clone is ion-exchange column purified and shipped in a 2D barcoded Matrix tube containing 10ug of transfection-ready, dried plasmid DNA (reconstitute with 100 ul of water).
<b>Reconstitution Method:</b>	<ol style="list-style-type: none"><li>1. Centrifuge at 5,000xg for 5min.</li><li>2. Carefully open the tube and add 100ul of sterile water to dissolve the DNA.</li><li>3. Close the tube and incubate for 10 minutes at room temperature.</li><li>4. Briefly vortex the tube and then do a quick spin (less than 5000xg) to concentrate the liquid at the bottom.</li><li>5. Store the suspended plasmid at -20°C. The DNA is stable for at least one year from date of shipping when stored at -20°C.</li></ol>
<b>RefSeq:</b>	<a href="#">NM_173648.2</a> , <a href="#">NP_775919.2</a>
<b>RefSeq Size:</b>	9127 bp
<b>RefSeq ORF:</b>	4593 bp
<b>Locus ID:</b>	285025
<b>UniProt ID:</b>	<a href="#">Q6ZP82</a>
<b>Cytogenetics:</b>	2q31.2
<b>MW:</b>	100.6 kDa
<b>Gene Summary:</b>	Plays a critical role in radial migration and centrosomal function.[UniProtKB/Swiss-Prot Function]

Product images:



Circular map for RC214028



Western blot validation of overexpression lysate (Cat# [LY406532]) using anti-DDK antibody (Cat# [TA50011-100]). Left: Cell lysates from untransfected HEK293T cells; Right: Cell lysates from HEK293T cells transfected with RC214028 using transfection reagent MegaTran 2.0 (Cat# [TT210002]).