

## Product datasheet for RC214024

### B3GNT6 (NM\_138706) Human Tagged ORF Clone

#### Product data:

|                           |                                                                   |
|---------------------------|-------------------------------------------------------------------|
| Product Type:             | Expression Plasmids                                               |
| Product Name:             | B3GNT6 (NM_138706) Human Tagged ORF Clone                         |
| Tag:                      | Myc-DDK                                                           |
| Symbol:                   | B3GNT6                                                            |
| Synonyms:                 | 3-Gn-T6; B3Gn-T6; beta-1; beta3Gn-T6; BGnT-6                      |
| Mammalian Cell Selection: | Neomycin                                                          |
| Vector:                   | pCMV6-Entry (PS100001)                                            |
| E. coli Selection:        | Kanamycin (25 ug/mL)                                              |
| ORF Nucleotide Sequence:  | >RC214024 ORF sequence<br>Red=Cloning site Blue=ORF Green=Tags(s) |

TTTTGTAATACGACTCACTATAGGGCGGCCGGAATTCGTCGACTGGATCCGGTACCGAGGAGATCTGCC  
GCC**CGATCGCC**

ATGGCTTTTCCCTGCCGAGGTCCTGACTGCCAAGACTCTGGCCTGCCTCCTGGTGGGCGTGAGTTTCT  
TAGCACTGCAGCAGTGGTTCTCCAGGCGCAAGGTCCCCGCGGAGGAGAGGTCCCCGAGGAGGAGAC  
GCCAGAGGGTCCCACCGACGCTCCCGGGCTGACGAGCCGCCCTCGGAGCTCGTCCCGGGCCCCCGTGC  
GTGGCGAACGCCCTCGGCAACGCCACGGCCGACTTCGAGCAGCTGCCCGCGCATCCAGGACTTCTGC  
GGTACCGCCACTGCCCACTTCCCGTGTCTTGGGACGCACCGCCAAGTGCGCCGGCGCCGAGGCGT  
GTTCTGCTCCTGGCGGTGAAGTCGGCGCTGAGCACTACGAGCGACCGAGCTCATCCGGCGCAGTGG  
GGCAAGAGCGCAGCTACGGCGGGCGGCCAGTGCGCCGCCTTTTCTATTGGGCACCCCGGGCCCCGAGG  
ACGAGGCGCGCGGAGCGGCTGGCGGAGCTGGTGGCGCTGGAGGCGCGGAGCAGCGCGCAGCTGTGCA  
GTGGGCCCTTCGCGGACACCTTCTCAACCTCACGCTCAAGCACCTGCACTTGCTCGACTGGCTGGCTGCA  
CGCTGCCCGCACGCGGCTTTCTGCTCAGCGGCGACGACGAGTGTTCGTGCACACCGCAACGTAGTCC  
GCTTCTGCAGGCGCAGCCACCCGGCCGCCACCTGTTCTCCGGCCAGCTCATGGAGGGTCCGTGCCCAT  
CCGCGACAGCTGGAGCAAGTACTTCGTGCCCGCCAGCTCTTCCCCGGTCCGCTTACCCGGTGTACTGC  
AGCGGCGGGGCTTCTCCTGTCCGGCCCCACGGCCCCGGCCCTGCGCGCGGCCCGCCACACCCCGC  
TCTTCCCATCGACGACGCTACATGGGATGTGTCTGGAGCGCGCCGGCCTGGCGCCACGCGGCCACGA  
GGGCATCCGGCCCTTCGCGTGCAGCTGCCTGGCGCACAGCAGTCTCTTCGACCCCTGCATGTACCGC  
GAGTTGCTGCTAGTGCACCGCTTCGCGCCCTACGAGATGCTGCTCATGTGAAGGCGCTGCACAGCCCCG  
CGCTCAGCTGTGACCGGGACACCGGTTCTCC

**ACGCGT**ACGCGGCCGCTCGAGCAGAACTCATCTCAGAAGAGGATCTGGCAGCAATGATATCCTGGATT  
ACAAGGATGACGACGATAAGGTTTAA



[View online >](#)

**Protein Sequence:** >RC214024 protein sequence  
Red=Cloning site Green=Tags(s)

MAFPCRRSLTAKTLACLVLGVSFALQQWFLQAPRSPREERSPEETPEGPTDAPAADEPPSELVPGPPC  
 VANASANATADFEQLPARIQDFLRYRHRHFLLWDAPAKCAGGRGVFLLAVKSAPEHYERRELIRRTW  
 GQERSYGGRPVRRLLFGTPGPEDEARAERLAELVALEAREHGDVLQWAFADTFNLTLKHLHLLDWLAA  
 RCPHARFLLSGDDDFVHTANVVRFLQAQPPGRHLFSGQLEMGSVPIRDSWSKYFVPPQLFPGSAYPVYC  
 SGGGFLLSGPTARALRAARHTPLFPIDDAYMGMCLEAGLAPSGHEGIRPFQVQLPGAQQSSFDPCMYR  
 ELLLVHRFAPYEMLLMWKALHSPALSCDRGHRVS

TRTRPLEQKLISEEDLAANDILDYKDDDDKV

**Chromatograms:** [https://cdn.origene.com/chromatograms/mk6449\\_e12.zip](https://cdn.origene.com/chromatograms/mk6449_e12.zip)

**Restriction Sites:** SgfI-MluI

**Cloning Scheme:**



**ACCN:** NM\_138706

**ORF Size:** 1152 bp

**OTI Disclaimer:** The molecular sequence of this clone aligns with the gene accession number as a point of reference only. However, individual transcript sequences of the same gene can differ through naturally occurring variations (e.g. polymorphisms), each with its own valid existence. This clone is substantially in agreement with the reference, but a complete review of all prevailing variants is recommended prior to use. [More info](#)

**OTI Annotation:** This clone was engineered to express the complete ORF with an expression tag. Expression varies depending on the nature of the gene.

**Components:** The ORF clone is ion-exchange column purified and shipped in a 2D barcoded Matrix tube containing 10ug of transfection-ready, dried plasmid DNA (reconstitute with 100 ul of water).

**Reconstitution Method:**

1. Centrifuge at 5,000xg for 5min.
2. Carefully open the tube and add 100ul of sterile water to dissolve the DNA.
3. Close the tube and incubate for 10 minutes at room temperature.
4. Briefly vortex the tube and then do a quick spin (less than 5000xg) to concentrate the liquid at the bottom.
5. Store the suspended plasmid at -20°C. The DNA is stable for at least one year from date of shipping when stored at -20°C.

**RefSeq:** [NM\\_138706.3](#)

**RefSeq Size:** 2560 bp

**RefSeq ORF:** 1155 bp

**Locus ID:** 192134

**UniProt ID:** [Q6ZMB0](#)

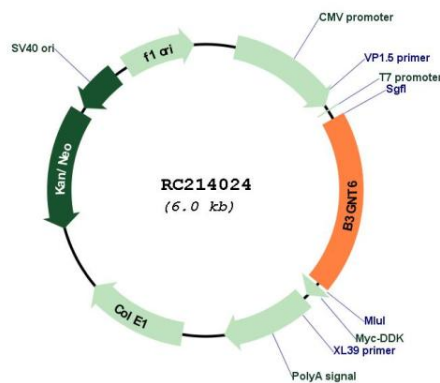
**Cytogenetics:** 11q13.5

**Protein Pathways:** Metabolic pathways, O-Glycan biosynthesis

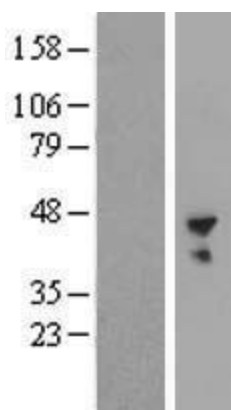
**MW:** 42.7 kDa

**Gene Summary:** The protein encoded by this gene is a beta-1,3-N-acetylglucosaminyltransferase that adds an N-acetylglucosamine moiety to N-acetylgalactosamine-modified serine or threonine. The encoded enzyme is responsible for creating the core 3 structure of O-glycans, which are important components of mucin-type glycoproteins. [provided by RefSeq, Dec 2016]

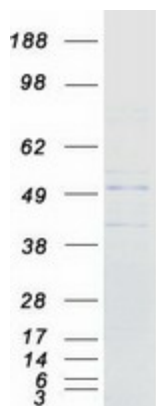
## Product images:



Circular map for RC214024



Western blot validation of overexpression lysate (Cat# [LY408556]) using anti-DDK antibody (Cat# [TA50011-100]). Left: Cell lysates from untransfected HEK293T cells; Right: Cell lysates from HEK293T cells transfected with RC214024 using transfection reagent MegaTran 2.0 (Cat# [TT210002]).



Coomassie blue staining of purified B3GNT6 protein (Cat# [TP314024]). The protein was produced from HEK293T cells transfected with B3GNT6 cDNA clone (Cat# RC214024) using MegaTran 2.0 (Cat# [TT210002]).