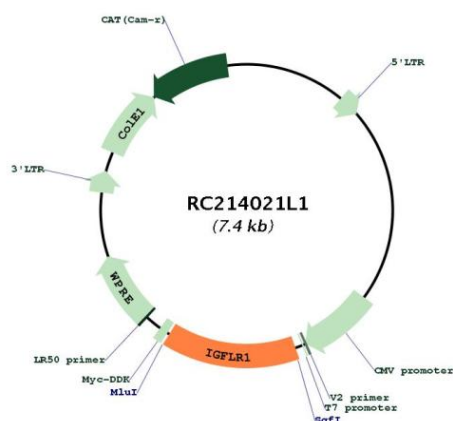
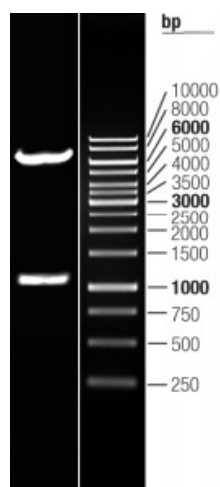


OTI Disclaimer:	The molecular sequence of this clone aligns with the gene accession number as a point of reference only. However, individual transcript sequences of the same gene can differ through naturally occurring variations (e.g. polymorphisms), each with its own valid existence. This clone is substantially in agreement with the reference, but a complete review of all prevailing variants is recommended prior to use. More info
OTI Annotation:	This clone was engineered to express the complete ORF with an expression tag. Expression varies depending on the nature of the gene.
Components:	The ORF clone is ion-exchange column purified and shipped in a 2D barcoded Matrix tube containing 10ug of transfection-ready, dried plasmid DNA (reconstitute with 100 ul of water).
Reconstitution Method:	<ol style="list-style-type: none"> 1. Centrifuge at 5,000xg for 5min. 2. Carefully open the tube and add 100ul of sterile water to dissolve the DNA. 3. Close the tube and incubate for 10 minutes at room temperature. 4. Briefly vortex the tube and then do a quick spin (less than 5000xg) to concentrate the liquid at the bottom. 5. Store the suspended plasmid at -20°C. The DNA is stable for at least one year from date of shipping when stored at -20°C.
RefSeq:	NM_024660.1
RefSeq Size:	1217 bp
RefSeq ORF:	1068 bp
Locus ID:	79713
UniProt ID:	Q9H665
Cytogenetics:	19q13.12
Protein Families:	Transmembrane
MW:	37.9 kDa
Gene Summary:	Probable cell membrane receptor for the IGF-like family proteins. Binds IGFL1 and IGFL3 with a higher affinity. May also bind IGFL2.[UniProtKB/Swiss-Prot Function]

Product images:



Circular map for RC214021L1



Double digestion of RC214021L1 using SgfI and MluI