

Product datasheet for **RC214020**

PHF11 (NM_001040444) Human Tagged ORF Clone

Product data:

Product Type:	Expression Plasmids
Product Name:	PHF11 (NM_001040444) Human Tagged ORF Clone
Tag:	Myc-DDK
Symbol:	PHF11
Synonyms:	APY; BCAP; IGEL; IGER; IGHER; NY-REN-34; NYREN34
Mammalian Cell Selection:	Neomycin
Vector:	pCMV6-Entry (PS100001)
E. coli Selection:	Kanamycin (25 ug/mL)
ORF Nucleotide Sequence:	>RC214020 representing NM_001040444 Red=Cloning site Blue=ORF Green=Tags(s)

TTTTGTAATACGACTCACTATAGGGCGCCGGGAATTCGTCGACTGGATCCGGTACCGAGGAGATCTGCC
GCC**CGATCGC**C

ATGAAAAAAGGACATGTGCACTCTGCCCAAAGATGTCGAATATAATGTCCTGTACTTTGCACAATCAG
AGAATATAGCTGCTCATGAGAATTGTTTGTCTGATTCTTCAGGACTTGTGGAATGTGAGGATCAGGATCC
ACTTAATCCTGATAGAAGTTTTGATGTGGAATCAGTAAAGAAAGAAATCCAGAGAGGAAGGAAGTTGAAA
TGCAAATTTTGCATAAAAGAGGAGCCACCGTGGGATGTGATTTAAAAAAGTAAACAAGAATTACCACT
TTTTCTGTGCCAAGAAGGACGACGCAGTCCACAGTCTGATGGAGTTCGAGGAATTTATAAACTGCTTTG
CCAGCAACATGCTCAATCCCGATCATCGCTCAAAGTGCTAAATTTTCAGGAGTAAAAGAAAAAGAGGA
AGGAAGAAACCCCTCTCAGGCAATCATGTACAGCCACCCGAAACAATGAAATGTAATACATTCATAAGAC
AAGTGAAGAAGAGCATGGCAGACACAGATGCAACTGTGAAAGTTCCTTTTCTTAAGAAATGCAAGGA
AGCAGGACTTCTTAATTACTTACTTGAAGAAATATTAGACAAAGTTCATTCAATTCAGAAAAACTCATG
GATGAGACTACTTCAGAATCAGACTATGAAGAAATCGGGAGTGCACCTTTTACTGTAGATTGTTGGAAG
ACACATTTGTAATTTTCAAGCAGCAATAGAGAAAAAATTCATGCATCTCAACAAGGTGGCAGCAGTT
GAAGGAAGAGATTGAGCTACTTCAGGACTTAAAACAACCTTGTGCTCTTTTCAAGAAAAAGAGATCTT
ATGCAAGTCTACATCAATATCATCCCTGTCTTAT

ACGCGTACGCGGCCGCTCGAGCAGAAACTCATCTCAGAAGAGGATCTGGCAGCAAATGATATCCTGGATT
ACAAGGATGACGACGATAAGGTTTAA



[View online »](#)

Protein Sequence: >RC214020 representing NM_001040444
 Red=Cloning site Green=Tags(s)

MEKRTCALCPKDVEYNVLYFAQSENIAAHENCLLYSSGLVECEDQDPLNPDRSFDVESVKKEIQRGRKLLK
 CKFCHKRGATVGC DLKNCNKNYHFFCAKKDDAVPQSDGVRGIYKLLCQQHAQFPPIAQS AKFSGV KRKRG
 RKKPLSGNHVQPPETMKCNTFFIRQVKEEHGRHTDATVKVPFLKKCKEAGLLNLLLEEILDK VHSIPEKLM
 DETTSESDYEEIGSALFDCRLFEDTFVNFQAAIEKKIHASQQRWQQLKEEIELLQDLKQTLCSFQENRDL
 MSSSTSISLSY

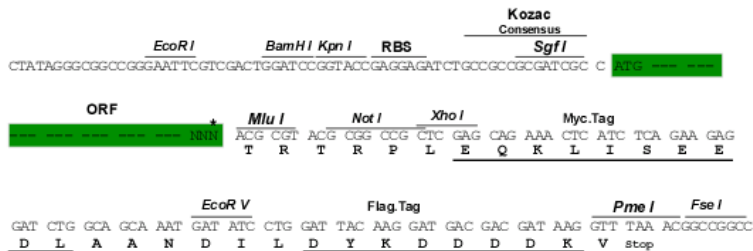
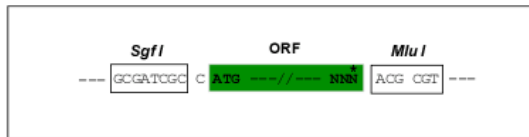
TRTRPLEQKLISEEDLAANDILDYKDDDDKV

Chromatograms: https://cdn.origene.com/chromatograms/ja1477_e09.zip

Restriction Sites: SgfI-MluI

Cloning Scheme:

Cloning sites used for ORF Shuttling:



* The last codon before the Stop codon of the ORF

ACCN: NM_001040444

ORF Size: 876 bp

OTI Disclaimer: The molecular sequence of this clone aligns with the gene accession number as a point of reference only. However, individual transcript sequences of the same gene can differ through naturally occurring variations (e.g. polymorphisms), each with its own valid existence. This clone is substantially in agreement with the reference, but a complete review of all prevailing variants is recommended prior to use. [More info](#)

OTI Annotation: This clone was engineered to express the complete ORF with an expression tag. Expression varies depending on the nature of the gene.

Components: The ORF clone is ion-exchange column purified and shipped in a 2D barcoded Matrix tube containing 10ug of transfection-ready, dried plasmid DNA (reconstitute with 100 ul of water).

Reconstitution Method:

1. Centrifuge at 5,000xg for 5min.
2. Carefully open the tube and add 100ul of sterile water to dissolve the DNA.
3. Close the tube and incubate for 10 minutes at room temperature.
4. Briefly vortex the tube and then do a quick spin (less than 5000xg) to concentrate the liquid at the bottom.
5. Store the suspended plasmid at -20°C. The DNA is stable for at least one year from date of shipping when stored at -20°C.

RefSeq: [NM_001040444.2](#), [NP_001035534.1](#)

RefSeq Size: 1471 bp

RefSeq ORF: 879 bp

Locus ID: 51131

UniProt ID: [Q9UIL8](#)

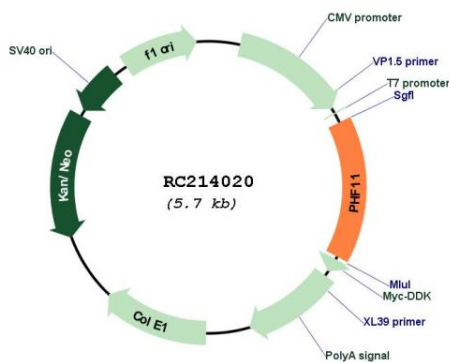
Cytogenetics: 13q14.2

Protein Families: Druggable Genome, Transcription Factors

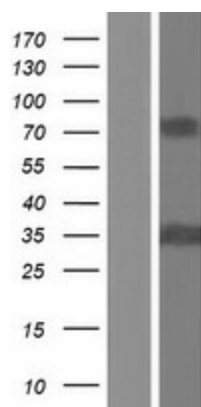
MW: 33.3 kDa

Gene Summary: This gene encodes a protein containing a PHD (plant homeodomain) type zinc finger. This gene has been identified in some studies as a candidate gene for asthma. Naturally-occurring readthrough transcription may occur from the upstream SETDB2 (SET domain bifurcated 2) gene to this locus. Alternative splicing results in multiple transcript variants. [provided by RefSeq, Mar 2016]

Product images:



Circular map for RC214020



Western blot validation of overexpression lysate (Cat# [LY421762]) using anti-DDK antibody (Cat# [TA50011-100]). Left: Cell lysates from untransfected HEK293T cells; Right: Cell lysates from HEK293T cells transfected with RC214020 using transfection reagent MegaTran 2.0 (Cat# [TT210002]).