

## Product datasheet for RC214015

### RPL6 (NM\_000970) Human Tagged ORF Clone

#### Product data:

Product Type:	Expression Plasmids
Product Name:	RPL6 (NM_000970) Human Tagged ORF Clone
Tag:	Myc-DDK
Symbol:	RPL6
Synonyms:	L6; SHUJUN-2; TAXREB107; TXREB1
Mammalian Cell Selection:	Neomycin
Vector:	pCMV6-Entry (PS100001)
E. coli Selection:	Kanamycin (25 ug/mL)
ORF Nucleotide Sequence:	>RC214015 ORF sequence Red=Cloning site Blue=ORF Green=Tags(s)

TTTTGTAATACGACTCACTATAGGGCGGCCGGAATTCGTCGACTGGATCCGGTACCGAGGAGATCTGCC  
GCC**CGATCGCC**

ATGGCGGGTGAAAAAGTTGAGAAGCCAGATACTAAAGAGAAGAAACCCGAAGCCAAGAAGTTGATGCTG  
GTGGCAAGGTGAAAAAGGTAACCTCAAAGCTAAAAGCCCAAGAAGGGGAGCCCCATTGCAGCCGCAA  
CCCTGTCCTTGCAGAGGAATTGGCAGGTATCCCGATCTGCCATGTATTCCAGAAAGGCCATGTACAAG  
AGGAAGTACTCAGCCGCTAAATCCAAGGTTGAAAAGAAAAGAAGGAGAAGGTTCTCGAACTGTTACAA  
AACCAGTTGGTGGTGACAAGAACGGCGGTACCCGGTGGTTAACTTCGAAAATGCCTAGATATTATCC  
TACTGAAGATGTGCCTCGAAAGCTGTTGAGCCACGGCAAAAACCTTCAGTCAGCACGTGAGAAAAGT  
CGAGCCAGCATTACCCCGGGACATTCTGATCATCCTCACTGGACGCCACAGGGCAAGAGGGTGGTTT  
TCCTGAAGCAGCTGGCTAGTGGCTTATTACTTGTGACTGGACCTCTGGTCTCAATCGAGTTCCTCTACG  
AAGAACACACCAGAAATTTGTCATTGCCACTTCAACAAAATCGATATCAGCAATGTAAAAATCCAAAA  
CATCTTACTGATGCTTACTTCAAGAAGAAGAAGCTGCGGAAGCCCAGACACCAGGAAGGTGAGATCTTCG  
ACACAGAAAAAGAGAAATATGAGATTACGGAGCAGCGCAAGATTGATCAGAAAGCTGTGGACTCACAAAT  
TTTACCAAAAATCAAAGCTATTCCTCAGCTCCAGGGCTACCTGCGATCTGTGTTGTCTGACGAATGGA  
ATTTATCCTCACAAATTGGTGTTT

**ACGCGT**ACGCGGGCCGCTCGAGCAGAAACTCATCTCAGAAGAGGATCTGGCAGCAAATGATATCCTGGATT  
ACAAGGATGACGACGATAAGGTTTAA



[View online »](#)

**Protein Sequence:** >RC214015 protein sequence  
Red=Cloning site Green=Tags(s)

MAGEKVEKPDTKKPEAKKVDAGGKVKKGNLAKKPKKGGKPHCSRNPVLVRGIGRYSRSAMYSRKAMYK  
 RKYSAASKVVEKKKKEKVLATVTKPVGGDKNGGTRVVKLRKMPRYPTEDVPRKLLSHGKKPFSQHVRL  
 RASITPGTILIIILTGRHRGKRVLKQLASGLLLVTGPLVLRVPLRRTHQKFVIATSTKIDISNVKIPK  
 HLTDAYFKKKLKRPRHQEGEIFDTEKEKYEITEQRKIDQKAVDSQILPKIKAIPLQGYLRVSVFALTNG  
 IYPHKLVF

TRTRPLEQKLISEEDLAANDILDYKDDDDKV

**Chromatograms:** [https://cdn.origene.com/chromatograms/mk6384\\_b01.zip](https://cdn.origene.com/chromatograms/mk6384_b01.zip)

**Restriction Sites:** SgfI-MluI

**Cloning Scheme:**



**ACCN:** NM\_000970

**ORF Size:** 864 bp

**OTI Disclaimer:** The molecular sequence of this clone aligns with the gene accession number as a point of reference only. However, individual transcript sequences of the same gene can differ through naturally occurring variations (e.g. polymorphisms), each with its own valid existence. This clone is substantially in agreement with the reference, but a complete review of all prevailing variants is recommended prior to use. [More info](#)

**OTI Annotation:** This clone was engineered to express the complete ORF with an expression tag. Expression varies depending on the nature of the gene.

**Components:** The ORF clone is ion-exchange column purified and shipped in a 2D barcoded Matrix tube containing 10ug of transfection-ready, dried plasmid DNA (reconstitute with 100 ul of water).

**Reconstitution Method:**

1. Centrifuge at 5,000xg for 5min.
2. Carefully open the tube and add 100ul of sterile water to dissolve the DNA.
3. Close the tube and incubate for 10 minutes at room temperature.
4. Briefly vortex the tube and then do a quick spin (less than 5000xg) to concentrate the liquid at the bottom.
5. Store the suspended plasmid at -20°C. The DNA is stable for at least one year from date of shipping when stored at -20°C.

**RefSeq:** [NM\\_000970.5](#)

**RefSeq Size:** 972 bp

**RefSeq ORF:** 867 bp

**Locus ID:** 6128

**UniProt ID:** [Q02878](#)

**Cytogenetics:** 12q24.13

**Domains:** Ribosomal\_L6e, Ribosomal\_L6e\_N

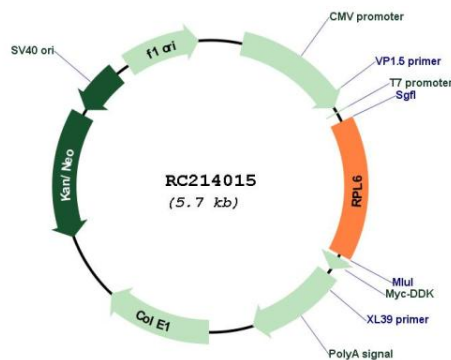
**Protein Families:** Transcription Factors

**Protein Pathways:** Ribosome

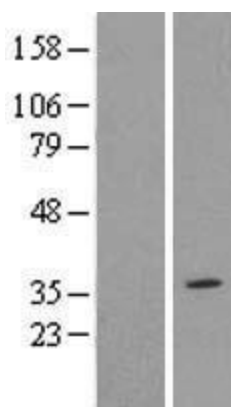
**MW:** 32.7 kDa

**Gene Summary:** This gene encodes a protein component of the 60S ribosomal subunit. This protein can bind specifically to domain C of the tax-responsive enhancer element of human T-cell leukemia virus type 1, and may participate in tax-mediated transactivation of transcription. As is typical for genes encoding ribosomal proteins, there are multiple processed pseudogenes of this gene dispersed throughout the genome. Alternative splicing results in multiple transcript variants. [provided by RefSeq, Feb 2016]

### Product images:



Circular map for RC214015



Western blot validation of overexpression lysate (Cat# [LY424417]) using anti-DDK antibody (Cat# [TA50011-100]). Left: Cell lysates from untransfected HEK293T cells; Right: Cell lysates from HEK293T cells transfected with RC214015 using transfection reagent MegaTran 2.0 (Cat# [TT210002]).