

Product datasheet for RC214008

FMNL1 (NM_005892) Human Tagged ORF Clone

Product data:

Product Type:	Expression Plasmids
Product Name:	FMNL1 (NM_005892) Human Tagged ORF Clone
Tag:	Myc-DDK
Symbol:	FMNL1
Synonyms:	C17orf1; C17orf1B; FHOD4; FMNL; KW-13
Mammalian Cell Selection:	Neomycin
Vector:	pCMV6-Entry (PS100001)
E. coli Selection:	Kanamycin (25 ug/mL)
ORF Nucleotide Sequence:	>RC214008 representing NM_005892 Red=Cloning site Blue=ORF Green=Tags(s)

TTTTGTAATACGACTCACTATAGGGCGGCCGGAATTCGTCGACTGGATCCGGTACCGAGGAGATCTGCC
GCC**CGATCGCC**

ATGGGCAACGCGGCCGAGCGCCGAGCAGCCCGCGGGCCCCGCGCCGCCCCCAAGCAGCCCGCGC
CTCCAAGCAGCCGATGCCCGCGCCGGAGAGCTGGAGGAGAGGTTCAACCGGCCCTGAACTGCATGAA
CTTGCCCCAGACAAGGTCCAGCTGCTGAGCCAGTATGACAACGAGAAGAAGTGGGAGCTCATCTGTGAT
CAGGAGCGGTTTCAAGTCAAGAATCCCCCGCAGCCTACATCCAGAAGCTGAAGAGCTATGTGGATACTG
GTGGGGTCAGCCGAAAGGTAGCAGCTGATTGGATGTCCAACCTGGGGTTTAAAGAGCGAGTTCAGGAGTC
CACGCAGGTGCTACGGGAGCTGGAGACCTCCCTGAGGACCAACCACATTGGGTGGGTGCAGGAGTTCCTC
AATGAAGAGAACCGTGGCCTGGATGTGCTGCTCGAGTACCTGGCCTTTGCCAGTGTCTGTACAGTATG
ACATGGAGAGCACAGACAACGGGGCTTCCAACCTCAGAGAAAAACAAGCCCTGGAGCAGTCTGTGGAAGA
CCTCAGCAAGGGTCCACCCTCCTCCGTGCCAAAAGCCGCCACCTGACCATCAAGCTGACCCAGCCAC
AGCAGGAAGGCCCTGCGGAATCCCGCATCGTCAGCCAGAAGGACGACGTCCACGTCTGTATTATGTGCC
TACGCGCCATCATGAACTACCAGTCTGGCTTCAAGCCTTGTGATGAACACCCAGCCTGTGTCAATGAGAT
TGCTCTGAGCCTCAACAACAAGAACCCAGAACCAAGGCTCTGGTGTGGAGTGTGTGGGGAGCAGC
ACCGCTTTGAAAAGCTGATGGAATATTTCCGGAATGAGGACAGCAACATCGACTTCATGGTGGCCTGCAT
GCAGTTTCAACATTGTGGTACATTCAAGTGGAGAACATGAACTTCCGTGTCTTCTGCAATATGAGTTC
ACCCACTTGGCCTGGACCTGTACTTGGAGAGGCTTCGGCTCACCGAGAGTGACAAGCTGCAGGTGCAGA
TCCAGGCGTACCTGGACAATATTTTGTGTGGGGCGCTGCTGGAGGACACAGAGACCAAGAAGCTGT
GCTGGAGCACATGGAGAACTGCAGGAGCAAGTGGCGTGTGACAGAGCGGCTTCGGGACGCGGAGAAC
GAATCCATGGCCAAGATTGCAGAACTGGAAAAACAGCTAAGCCAGGCGCGCAAGGAGTTGGAGACCTGC
GGGAGCGCTTCAAGCAATCGACCGCCATGGCGCCTCCAGGCGTCCCCAGAGCCTGAGAAAAGCGCTCC
CGTGCCCGACGCGCCCTCGGCCTGGAGCTGAAGGTGGAGGAGCTGGAGGAGAAGGGTTAATCCGT



[View online >](#)

ATTCTGCGGGGGCCGGGGGATGCTGTCTCCATCGAGATCCTCCCCGTCGCTGTGGCAACTCCGAGCGGCG
 GTGATGCTCCGACTCCGGGGGTGCCGACCGGCTCCCCAGCCAGATCTCGCACCTGCAGCAGAGCCGGC
 TCCCGGAGCAGCGCCACCGCCGCGCCCCACTGCCCGGCTCCCTCCCCGAGGAAGCCCCGCCCTCT
 GCGCCCCACAGGCCCGCTCTCCCTGGCAGCCCGGAGCCCCGCTGCGCCGCGCTGCCCGGAGACC
 TGCCGCCCCACCCCGCCACCGCCACCCTCCGGGACTGACGGGCGGTGCCCTCCGCGCCGCGCC
 GCCCGCGGCTCCCGGAGGTCCTCTGATGCCCTAGGAAGACGCGACTCAGAATTGGGCCAGGAGTG
 AAGGCCAAGAAGCCCATCCAGACTAAGTCCGAATGCCACTTTGAACTGGGTGGCAGTAAACCCAGTG
 AGATCACCGGCACTGTCTTACAGAGCTCAATGATGAGAAGGTGCTGCAGGAGCTAGACATGAGTGATTT
 TGAGGAACAGTTCAAGACCAAGTCCCAAGGCCAGCCTGGACCTCAGCGCTCTCAAGAGTAAGGCAGCC
 CAGAAGGCCCCAGCAAGGCGACTCATTGAGGCCAACCGGCCAAGAATTGGCCATCACCTGCGGA
 AGGGCAACCTGGGGGCGAGCGCATCTGCCAAGCATTGAGGCGTACGACCTGCAGGCTCTGGGCTGGA
 CTTCTGGAGCTGCTGATGCGCTTCTGCCACAGAGTATGAGCGCAGCCTCATCACCGCTTTGAGCGG
 GAGCAGCGCCAAATGGAGGAGCTGTCAGAGGAGGACCGCTTATGCTATGCTTACGCCGATCCCGCGCC
 TGCCGGAGCGCATGACCACACTACCTTCTGGGCAACTCCCGGACACAGCCAGCTGCTCATGCCGA
 ACTGAATGCCATATTGCAGCCTCAATGCCATCAAGTCTCTGACAACTCCGCCAGATCTGGAGATT
 GTCTGGCCTTTGGCAACTACATGAACAGTAGCAAGCGTGGGGCAGCCTATGGTTCGCGCTCCAGAGCC
 TGGATGCGCTGTTGGAGATGAAGTCGACTGATCGCAAGCAGACGCTGCTGCACTACCTGGTGAAGGTCAT
 TGCTGAGAAGTACCCGCAACTCACAGGCTTCCACAGCGACTGCACTTCTGGACAAGCGGGCTCAGTG
 TCCCTGGACAGTGTCTGGCGGACGTGCGCTCCCTGCAGCGAGGCTAGAGTTGACACAGAGAGAGTTTG
 TGCGGCAGGATGACTGCATGGTGTCAAGGAGTTCCTGAGGGCCAACCGCCACCATGGACAAGCTGCT
 GGCAGACAGCAAGACGGCTCAGGAGGCTTTGAGTCTGTGGTGGAGTACTTCGGAGAGAACCCCAAGACC
 ACATCCCAGGCTGTTCTTCTCCCTCTTAGCCGTTTATTAGGCCTACAAGAAAGCTGAGCAGGAGG
 TGAACAGTGGAAAAAGAAAGCCGCTGCCAGGAGGCGCTGATACCCGGGCAAGGGGAGCCCC
 AGCACCACAGTACCCGCCAAGGCGCGGCCACAGATGGACCTCATCTCTGAGCTGAAACGGAGGCAG
 CAGAAGGAGCCACTATTATGAGAGCGACCGTATGGGGCCATTGAAGCATCATCACAGTGATCAAGA
 CGGTGCCCTTACGCGCCGACCGGCAAGCGGACATCCCGGCTCTCTGTGAGGCCAGCCTGGGAGAAGA
 GATGCCCTC

ACGCGTACGCGGCGCTCGAGCAGAACTCATCTCAGAAGAGGATCTGGCAGCAATGATATCCTGGATT
 ACAAGGATGACGACGATAAGGTTTAA

Protein Sequence:

>RC214008 representing NM_005892
Red=Cloning site Green=Tags(s)

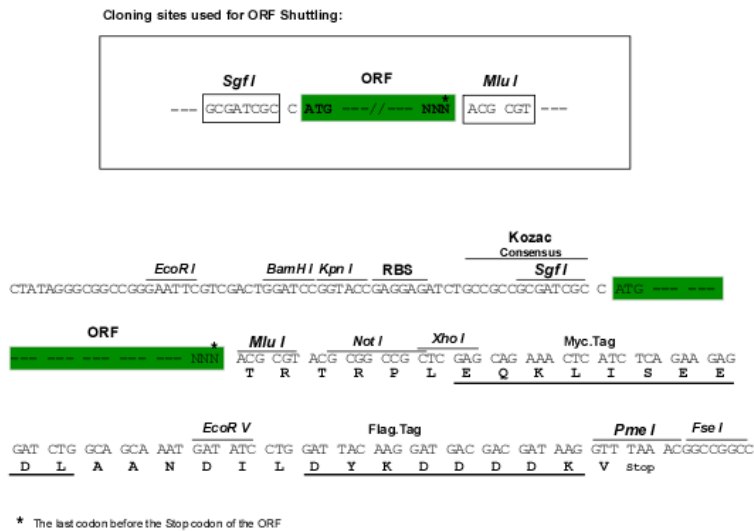
MGNAAGSAEQPAGPAAPPPKQPAPPKQMPAAGELEERFNRLNCMNLPPDKVQLLSQYDNEKKWELICD
 QERFQVKNPPAAYIQKLSYVDTGGVSRKVAADWMSNLGFKRRVQESTQVLELETSRLTNHIGWVQEF
 NEENRGLDVLLEYLAFAQCSVTYDMESTDNGASNSEKNKPLEQSVEDLSKGGPSSVPKSRHLTIKLP
 SRKALRNSRIVSQKDDVHVCIMCLRAIMNYQSGFSLVMNHPACVNEIALSLNNKNPRTKALVLELLA
 LVRGGHDIIILAAFDNFKEVCGEQHRFEKLEMEYFRNEDSNIDFMVACMQFINIVVHVENMNFVFLQY
 EYFTHLGLDYLRLRLTESDKLQVQIQAYLDNIFDVGALLEDETETKNAVLEHMEELQEVALTERLDA
 ENESMAKIAELEKQLSQARKELETLRERFSESTAMGASRRPPEPEKAPPAAPTRPSALELKVVEE
 LEEKGLIRILRGPDAVSIIEILPVAVATPSGGDAPTPGVPTGSPSPDLAPAAEPAPGAAPPPPPPL
 PGLPSPQEAPPSAPPQAPPLPGSPEPPPAPPLPGDLPPPPPPPPPPGTGDPVPPPPPPPPPPGGP
 DALGRRDSELGPGVKAKKPIQTKFRMPLLNWVALKPSQITGTVFTELNDEKVLQELDMSDFEEO
 FKTKSQGPSLDLSALKSKAAQKAPSKATLIEANRAKLAITLRKGNLGAERICQAI EAYDLQALGLD
 FLELLMRFLPTEYERSLITRFEREQRPMEELESEDRFMFCFSRIPRLPERMTTLTFLGNFPD
 TLAQLMPQLNAIIAASMSIKSSDKLRQILEI VLAFGNYMNSSKRGAAYGFRLQSLDALLEM
 KSTDRKQTLHLVVKVIAEKYPQLTGFHSDLHFLDKAGSVSLDSVLAADVRSRQGLELTQREFV
 RQDDCMVLKEFLRANSPTMDKLLADSKTAQEAFAFESVVEYFGENPKT TSPGLFFSLFRF
 IKAYKAEQEVEQWKKEAAAQEAGADTPGKGEPAPKSPKARRPQMDLISELKRKQKEPLIYES
 DRDGAIEDIITVIKTVPFARTGKRTSRLLEASLGEEMPL

TRTRPLEQKLISEEDLAANDILDYKDDDDKV

Chromatograms: https://cdn.origene.com/chromatograms/mg4878_g02.zip

Restriction Sites: SgfI-MluI

Cloning Scheme:



ACCN: NM_005892

ORF Size: 3300 bp

OTI Disclaimer: Due to the inherent nature of this plasmid, standard methods to replicate additional amounts of DNA in E. coli are highly likely to result in mutations and/or rearrangements. Therefore, OriGene does not guarantee the capability to replicate this plasmid DNA. Additional amounts of DNA can be purchased from OriGene with batch-specific, full-sequence verification at a reduced cost. Please contact our customer care team at custsupport@origene.com or by calling 301.340.3188 option 3 for pricing and delivery.

The molecular sequence of this clone aligns with the gene accession number as a point of reference only. However, individual transcript sequences of the same gene can differ through naturally occurring variations (e.g. polymorphisms), each with its own valid existence. This clone is substantially in agreement with the reference, but a complete review of all prevailing variants is recommended prior to use. [More info](#)

OTI Annotation: This clone was engineered to express the complete ORF with an expression tag. Expression varies depending on the nature of the gene.

Components: The ORF clone is ion-exchange column purified and shipped in a 2D barcoded Matrix tube containing 10ug of transfection-ready, dried plasmid DNA (reconstitute with 100 ul of water).

Reconstitution Method:

1. Centrifuge at 5,000xg for 5min.
2. Carefully open the tube and add 100ul of sterile water to dissolve the DNA.
3. Close the tube and incubate for 10 minutes at room temperature.
4. Briefly vortex the tube and then do a quick spin (less than 5000xg) to concentrate the liquid at the bottom.
5. Store the suspended plasmid at -20°C. The DNA is stable for at least one year from date of shipping when stored at -20°C.

RefSeq: [NM_005892.3](#), [NP_005883.2](#)

RefSeq Size: 3973 bp

RefSeq ORF: 3303 bp

Locus ID: 752

UniProt ID: [O95466](#)

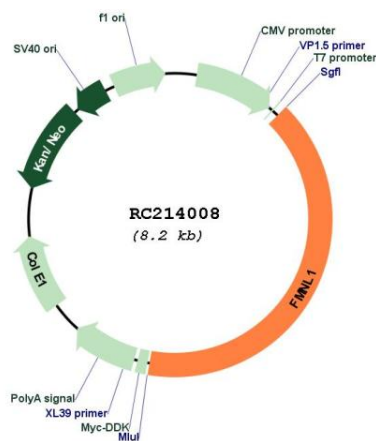
Cytogenetics: 17q21.31

Domains: FH2

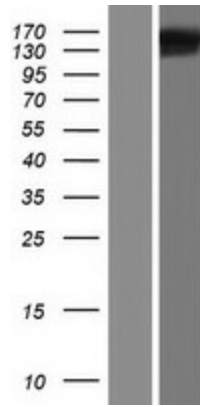
MW: 121.6 kDa

Gene Summary: This gene encodes a formin-related protein. Formin-related proteins have been implicated in morphogenesis, cytokinesis, and cell polarity. An alternative splice variant has been described but its full length sequence has not been determined. [provided by RefSeq, Jul 2008]

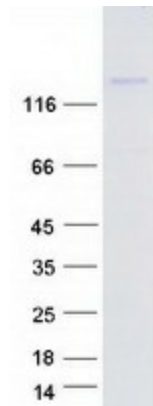
Product images:



Circular map for RC214008



Western blot validation of overexpression lysate (Cat# [LY417007]) using anti-DDK antibody (Cat# [TA50011-100]). Left: Cell lysates from untransfected HEK293T cells; Right: Cell lysates from HEK293T cells transfected with RC214008 using transfection reagent MegaTran 2.0 (Cat# [TT210002]).



Coomassie blue staining of purified FMNL1 protein (Cat# [TP314008]). The protein was produced from HEK293T cells transfected with FMNL1 cDNA clone (Cat# RC214008) using MegaTran 2.0 (Cat# [TT210002]).