

## Product datasheet for RC214006

### FBH1 (NM\_032807) Human Tagged ORF Clone

#### Product data:

|                           |   |
|---------------------------|---|
| Product Type:             | Expression Plasmids   |
| Product Name:             | FBH1 (NM_032807) Human Tagged ORF Clone                                     |
| Tag:                      | Myc-DDK   |
| Symbol:                   | FBH1  |
| Synonyms:                 | Fbx18; FBXO18; hFBH1  |
| Mammalian Cell Selection: | Neomycin  |
| Vector:                   | pCMV6-Entry (PS100001)  |
| E. coli Selection:        | Kanamycin (25 ug/mL)  |
| ORF Nucleotide Sequence:  | >RC214006 representing NM_032807<br>Red=Cloning site Blue=ORF Green=Tags(s) |

TTTTGTAATACGACTCACTATAGGGCGGCCGGAATTCGTCGACTGGATCCGGTACCGAGGAGATCTGCC  
GCC**CGATCGCC**

ATGAGCTACGAGGTGACTTCAGGCTGCCATTGGACCTGTCAAGTGCCTGAGTCATGTGATAATGGGCTAC  
ATTGCGCAGGGCCCTGGGCCATCTCCACAGGAGATGCCAGAGGACGAGTGCCCACTTGTGGTCTTCAC  
AGAGCACGCTGAAATGAGACGGTTAAGCGGAAGCATCTACTGCCATTGACTGCCAGCATTGGCTCGG  
AGTCACCTGGCTGTGACCCAGCCCTTCGGTCAAAGATGGACAAACAGAGATCCGAACCATGGTCTCTATC  
CTAAACCGAGAACAAAAAGAGGGAGTAGGGGTCAGGGAAGTCAAAGATGCATCCCTGAGTCTTCCCTAGC  
AGGCAAGCAGCCGTGCACCAATGACATGGCCAAAAGCAATTCTGTTGGCCAGGACAGCTGTGAGGACTCT  
GAGGGTGACATGATCTTCTGACAGAGAGCAGCTGTGCACTGCCTCAGGAAGGCAGTGCAGGGCCGGGCT  
CACCAGGGTCTGCCCCGCCCTCCAGGAAGCGGTCTTGGTCTCTGAGGAAGAGAGTAACCAGGCTACCGG  
GACCAGCCGGTGGGATGGAGTTTCTAAGAAAGCTCCACGGCACCATTTGTCTGTGCCATGCACAAGGCC  
AGGGAGGCCAGGCAAGAAGCAGAGGACAGTACGTCTCGGCTCTGCGGAGTCTGGTGAACCGACCAAG  
ATGCTGGGACGTGGGTCTGATCCCATTCCTGACTCATACTATGGGCTCTTGGGACCTTGCCCTGCCA  
GGAAGCACTGAGCCACATTTGCAGCCTGCCTAGTGAGGTCCTGAGGCACGTGTTGCCTTCTCCCGGTG  
GAAGACTCTATTGGAACCTGAGCTTGGTGTGCCACTTGTGAGGGAGATCATAGTGACCCGCTGTTC  
TTCTTGAAGAAGCTGTACCATCGATACCTGATGAATGAAGAGCAAGCTGTGAGCAAAAGTGACCGCAT  
CCTGTCTAACTGTGGCATAGAAAAGGAGTCAGACCTGTGTGTGCTGAACCTCATACGATACACAGCCACC  
ACTAAGTCTCTCCGAGTGTGGATCCCAGAGGGTGTGTGGAGTCTGAGGGACCACCCCTCTCCCGG  
AGGCTGAGGCGTGTGCGGCAACACCTCCCCGACCTCTACGCTGCTGCCGGGGTGTCAACATCTGGG  
CCTGGTGGCGGCTGTGGTCTCTCTCCAGCAGTGTGAATGACATCCAGCGACTGCTCTTCTGCCTCCGG  
AGACCCAGCTCCACGGTGACCATGCCAGATGTACCGAGACCCTGTACTGCATAGCCGTCTTCTACG  
CCATGAGGGAGAAGGGGATTAACATCAGCAATAGGATTCACACAACTTTCTATTGCCTATATCTTCA  
GGAGAATTCCTGCACTCAGGCCACAAAAGTTAAGAGGAGCCATCTGTCTGGCCAGGCAAGAAAACCATC



[View online »](#)

CAACTTACACATGAACAACAGCTGATTCTGAATCACAAGATGGAACCTCTCCAGGTGGTAAAAATTATGG  
 CCTTTGCCGCACTGGGAAGACCTCAACGCTGGTCAAGTATGCAGAGAAGTGGTCTCAGAGCAGGTTTCT  
 GTATGTGACATTCACAAAGACATCGCAAAGCAGGCCGAACGCGTCTCCCCAGCAACGTCATCTGCAAA  
 ACCTTCCACTCCATGGCTACGGGCACATAGGGCGGAAGTACCAGTCAAAGAAGAAGTTGAATCTCTTCA  
 AGTTAACACCCCTCATGGTCAACTCCGCTCTTGTGAAGGAAGGGTGGATTCAAGAGCCAAGCTTGT  
 GTGAAGACTCTAGAAAACCTCTTTGCCCTGGCTGACGAAGAGCTGACCATTGATCACGTGCCTATTTGG  
 TGTAAAGACAGCAAGGACAGAGAGTCAATGGTTGACGAGAGTAAAAACTGAATGGTGTCTTGAAGCGA  
 GCCGCCTCTGGGATAACATGCGGAAGCTGGGGAGTGCACAGAAGAGGCCACCAGATGACTCATGACGG  
 CTACTTAAAACTCTGGCAGCTGACGAAGCCTTCGCTGGCCTCTTTTGACGCCATCTTTGTGGATGAGGCC  
 CAGGACTGCACACCAGCTATCATGAACATAGTTCTGTCTCAGCCATGTGGGAAAACTTTGTAGGGGACC  
 CGCACCAGCAGATCTATACCTTCCGGGGTGCAGTCAACGCCCTGTTACAGTGCCCCACACCACGCTCT  
 CTATCTCACGCAGAGTTTTCGTTTGGTGTGAAATAGCTTATGTGGGAGCTACTATCTTGGATGTTTGC  
 AAGAGAGTCAGAAAAAGACTTTGGTTGGAGGAAACCATCAGAGTGGCATTAGAGGTGACGCAAAGGGGC  
 AAGTGGCCTTGTGTCCCGACCAACGCCAACGTGTTTGTAGGCGCTACGGGTGACGGAAGGGGAATT  
 CCCTTCAAGGATACATTTGATTGGGGGATTAATCATTGATTGGACAGAATCATTGATATTTGGATC  
 TTCTTACGCCAGAGGAAGAACGGAGGAAACAAAACCTCGTCATTAAGACAAATTTATCAGAAGATGGG  
 TGCACAAAGAAGGCTTTAGTGGCTTCAAGAGGTATGTGACCGCTGCCGAGGACAAGGAGCTTGAAGCCAA  
 GATCGCAGTTGTTGAAAAGTATAACATCAGGATTCAGAGCTGGTGCAAAGGATAGAAAAATGCCATATA  
 GAAGATTTGGACTTTGCAGAGTACATTTGGGCACTGTGCACAAAGCCAAAGGCCGGAGTTTGACACTG  
 TGCATGTTTTGGATGATTTGTGAAAGTGCCTTGTGCCCGGCATAACCTGCCCCAGCTTCCGCACTTCA  
 AGTTGAGTCATTTCTGAGGATGAATGGAATTTACTGTATGTTGCAGTAACTCGAGCCAAGAAGCGTCTC  
 ATCATGACCAAATCATTGAAAAACATTTGACTTTGGCTGGGAGTACTTCTTGAAGCAGAGCTGACAA  
 GCAACGCTTAAAAACAGCGTGGTGCCTGCTGCGTGGGACAGTGAACAATGCCATCCCTGTTGACAC  
 CGTCCTTACCATGAAGAAGCTGCCATCACCTATAGCAACAGGAAGGAAAAACAAGGGGGCTACCTTGC  
 CACTCCTGTGCGGAGCAGCGCATCGGGCCCTGGCTTCTGACAGCCTCCCGGAGCAGGTGCGCGCCA  
 TGGAGCGCACTGTGGAGAACATCGTACTGCCCGGCATGAGGCCCTGCTTCTCTCGTCTTC

AGCGGACCGACGCGTACGCGGCCGCTCGAGCAGAAACTCATCTCAGAAGAGGATCTGGCAGCAAATGATATCC  
 TGGATTACAAGGATGACGACGATAAGGTTTAA

**Protein Sequence:**

>RC214006 representing NM\_032807  
 Red=Cloning site Green=Tags(s)

MSYEVTSGCHWTCQVPESCDNGLHCAGPLGHLHRCQRTSAHLLVFTEHAEMRRFKRHLTAIDCQHLAR  
 SHLAVTQPFQQRWTRNDPNHGLYPKPRTKRGRGQGSQRCEPFFLAGKQPCTNDMAKSNSVQDSCQDS  
 EGDMI FPAESSCALPQEGSAGPGSPGAPP SRKRSWSSEESNQATGTSRWDGVS KKA PRHHL SVPCTR  
 REARQEAEDSTSRLSAESGETDQDAGDVGPDIPDSYYGLLGTLPQCEALSHICSLPSEVLRHVFAFLPV  
 EDLYWNL SLVCHLWREIISDPLFIPWKLYHRYLMNEEQAVSKVDGILSNCGIEKESDL CVLNLIRYTAT  
 TKCSPSVDPERVLSLRDHP LPEAEACVRQHLPDL YAAAGGVNIWALVA AVVLLSSSVNDIQRLFLCLR  
 RPSSTVTMPDVTELYCIAVLLYAMREKGINISNRIHYNIFYCLYLQENSCTQATKVKEEPSVWPGKTI  
 QLTHEQQLILNHKMEPLQVVKIMAFAGTGKSTLVKYAEKWSQSRFLYVTFNKSI AKQAERVFPSNVICK  
 TFHSMAYGHI GRKYQSKKLNLFKLTPFMVNSVLAEGKGGFIRAKLVCKTLENFFASADEELTIDHVPIW  
 CKNSQGRVMVEQSEKLVLEASRLWDMRKLGECTEEAHQMTHDGYLKLWQLSKPSLASFDAIFVDEA  
 QDCTPAIMNIVLSQPCGKIFVGDPHQIYTFRGAVNALFVPHTHVFYLTQSFRTGVEIAYVGATILDVC  
 KRVRKKT LVGGNHQSGIRGDAKQVALLSRTNANVFDEAVRVTEGEFPSRIHLIGGIKSFGLDRIIDIWI  
 LLQPEEERRKQNLVIKDKFIRRWHKEGFSGFKRYVTAEDKELEAKI AVVEKYNI RIPELVQRIEKCHI  
 EDLDFAEYILGTVHKAKGLEFDTVHVLD DFKVPCARHNL PQLPHFRVESFSEDEWNLLYVAVTRAKKRL  
 IMTKSLENILTLAGEYFLQAE LTSNVLKTGVVRCVQCNNAI PVDTVL TMKKL PITYSNRKENKGGYLC  
 HSCAEQRIGPLAFLTASPEQVRAMERTVENIVLPRHEALLFLVF

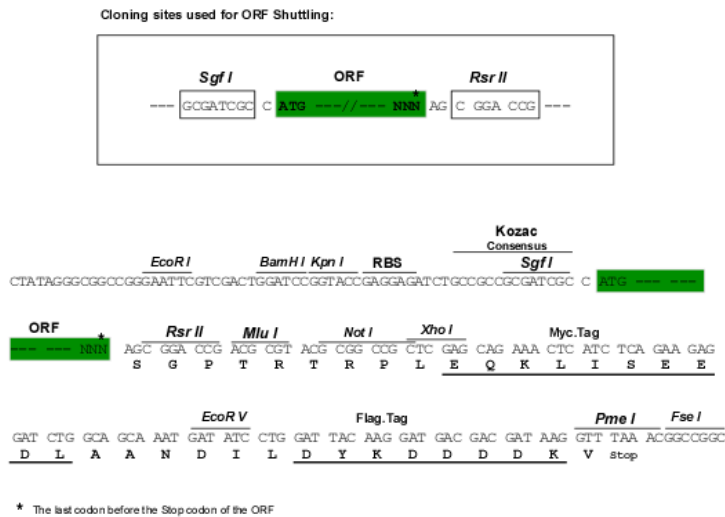
SGPTRRRLEQKLI SEEDLAANDILDYKDDDDKV

**Chromatograms:**

[https://cdn.origene.com/chromatograms/mk8029\\_a04.zip](https://cdn.origene.com/chromatograms/mk8029_a04.zip)

Restriction Sites: SgfI-RsrII

Cloning Scheme:



ACCN: NM\_032807

ORF Size: 3282 bp

OTI Disclaimer: The molecular sequence of this clone aligns with the gene accession number as a point of reference only. However, individual transcript sequences of the same gene can differ through naturally occurring variations (e.g. polymorphisms), each with its own valid existence. This clone is substantially in agreement with the reference, but a complete review of all prevailing variants is recommended prior to use. [More info](#)

OTI Annotation: This clone was engineered to express the complete ORF with an expression tag. Expression varies depending on the nature of the gene.

Components: The ORF clone is ion-exchange column purified and shipped in a 2D barcoded Matrix tube containing 10ug of transfection-ready, dried plasmid DNA (reconstitute with 100 ul of water).

Reconstitution Method:

1. Centrifuge at 5,000xg for 5min.
2. Carefully open the tube and add 100ul of sterile water to dissolve the DNA.
3. Close the tube and incubate for 10 minutes at room temperature.
4. Briefly vortex the tube and then do a quick spin (less than 5000xg) to concentrate the liquid at the bottom.
5. Store the suspended plasmid at -20°C. The DNA is stable for at least one year from date of shipping when stored at -20°C.

RefSeq: [NM\\_032807.4](#), [NP\\_116196.3](#)

RefSeq Size: 3727 bp

RefSeq ORF: 3285 bp

Locus ID: 84893

UniProt ID: [Q8NFZ0](#)

Cytogenetics: 10p15.1

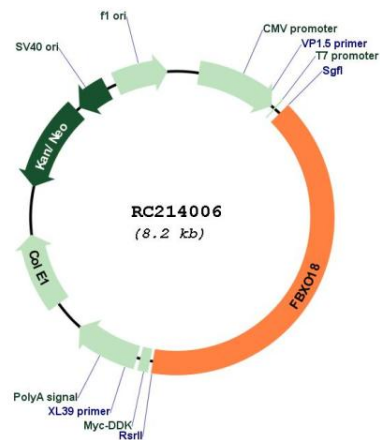
Domains: F-box

Protein Families: Druggable Genome

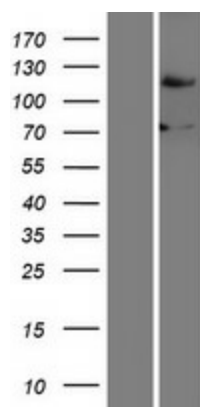
MW: 123.2 kDa

**Gene Summary:** This gene encodes a member of the F-box protein family, members of which are characterized by an approximately 40 amino acid motif, the F-box. The F-box proteins constitute one of the four subunits of ubiquitin protein ligase complex called SCFs (SKP1-cullin-F-box), which function in phosphorylation-dependent ubiquitination. The F-box proteins are divided into three classes: Fbws containing WD-40 domains, Fbls containing leucine-rich repeats, and Fbxs containing either different protein-protein interaction modules or no recognizable motifs. The protein encoded by this gene belongs to the Fbx class. It contains an F-box motif and seven conserved helicase motifs, and has both DNA-dependent ATPase and DNA unwinding activities. Alternatively spliced transcript variants encoding distinct isoforms have been identified for this gene. [provided by RefSeq, Jul 2008]

### Product images:



Circular map for RC214006



Western blot validation of overexpression lysate (Cat# [LY409934]) using anti-DDK antibody (Cat# [TA50011-100]). Left: Cell lysates from untransfected HEK293T cells; Right: Cell lysates from HEK293T cells transfected with RC214006 using transfection reagent MegaTran 2.0 (Cat# [TT210002]).