

Product datasheet for **RC214003**

TEM4 (ARHGEF17) (NM_014786) Human Tagged ORF Clone

Product data:

Product Type:	Expression Plasmids
Product Name:	TEM4 (ARHGEF17) (NM_014786) Human Tagged ORF Clone
Tag:	Myc-DDK
Symbol:	TEM4
Synonyms:	p164-RhoGEF; P164RHOGEF; RHOGEF17; TEM4
Mammalian Cell Selection:	Neomycin
Vector:	pCMV6-Entry (PS100001)
E. coli Selection:	Kanamycin (25 ug/mL)
ORF Nucleotide Sequence:	>RC214003 ORF sequence, codon optimized . Due to the complexity of NM_014786, the ORF clone is codon optimized for mammalian Expression. The nucleotide sequence differs from the reference sequence, yet the amino acid sequence remains identical.

Red=Cloning site Blue=ORF Green=Tags(s)

TTTTGTAATACGACTCACTATAGGGCGGCCGGGAATTCGTCGACTGGATCCGGTACCGAGGAGATCTGCC
GCC**CGGATCGCC**

ATGGCCGATGGCGCACCCGCGCCCCAGCTTTACAGATCCGTATCATTCAAGCTCCTGAAAAGGTGGTCTG
GGGACCAGGGCTGAGGGAGGAGACACCGATACACCTGGTTTGCGCCGACGCGCTTCTGCAGGCCATC
CACGGCTGCCCGGGGACGCCAGTAGAAGGGTGTCAAAGCTTGCAGCGGTCCACTCGCTGCTCCCGCC
CAACCCGACCCCTGAGGAGCCTGTACCAAGTGTGCGGCAGTTGTCCCGCCGGTTTGACGCTCCAGGC
TCGATGACGGATCCGCTGGGACCAGGGACGGGGTGTACTGCCCGCGGCTGCCGAGGAGGCCGAGAAGG
CCCGGCCCGGGAGCCTGGCCGAGCGTCACCGAAATGCGGAAGCTGTTGGGGGCCAGGATCTAGAAGG
CCAAGTGCCGACAGCGAGAGCCCCGGCACACCCAGCCAGCGGGGACGCTGGGAACCCCAAGCTCGAG
AGTCCCACCAACCAACTCCTCCACCTCGCACCTGCTCCACTGGCTGGCCTGCGATCCGCTCGCCC
CCTGACTGGGCCCGAAACTGAAGGAAGGCTCCGGCGCCACAGCAGCAGGAAAGAGCCAGAGGCCG
GCAGACGGACTCCATTCTGGCACATTTTCAGCCAGCCGAGGCAGGCGGAGAGCATCATGTAGTCTCT
CCAGCATTGCTGCCTCATACCCAGTATCTCGATCCAGGGCCGCTCTAGCTCAGAGGAGGAAGAAGG
ACCACCCAGTTGCCAGGGGCCAGAGTCCAGCTTATCACGGAGGCCACAGCTCCGGGTGACAGATGAC
AGAGACGGGAAGGTGGCCACCGCTGGGGCGTGCACCGGCCTCCGGCCGGATCCAGCCTCCTGGACC
AAGACTGCAGGCCGACAGCGACGGCTTAACCTCAGCTCAATGAACAGCGCCGGCTTAGTGGGAGCCC
TGAACCTCCACAGTCTCGGGCACCTCGCAGGAGGGCCTCGCGGAATGGGGATCGGATCTCCTCCT
TGTGTTCCAGGGCCCAGGAAGGACTCCGCCAATGTCCGACAGTGTGGGGGGCCCTTAGGGTTGCTA



[View online »](#)

AAGTTAGCTTTCCTCTTACTTGGCCTCACCCGCTGGCAGTCGCGGGTCTAGCAGATACAGTAGCACTGA
AACCCTGAAGGACGATGACCTTTGGAGTTCGCCGGTTCAGGGGGATGGGGAGTGTATAGAAGTCCATCT
TTCGGAGCCGGTGAAGGGCTCCTGAGGAGTCAGGCCCGCACCCAGGGCAAAGGGGCTGGGGTACATCCC
GGGCTCTCCGGGACGGGGCTTCGAACCGGAAAAGAGCAGACAACGGAAGTCCCTGTCCAACCCAGACAT
TGCAAGCGAGACATTGACTGCTGTCTTCTGCGATCTGATCTCAGCGAACTGCGCGTAAGGAAACCC
GGAGGCAGTTCAGGGGACCGGGCTCCAACCCACTTGATGGGAGAGACAGTCCCTCTGCAGGCGGTCCGG
TGGGTCAATTGGAGCCTATCCCGATTCCCGCCCCCGCTCCCGAGCAGTCCGACCAAGCTCAAGGACCT
GACTGCCACTCTGCGACGCGCAAAAAGTTTCACTTGCAGTGAAAAGCCAATGGCAAGAAGGCTTCCTCGA
ACGTCCGCGCTGAAAAGCTTCTTCCGAGCTGCTGCTGACCGGTCCGGGGCAGAGGAGGATCCCTTGC
CTCTGATTGTTCAAGATCAATATGTCCAAGAGGCCCGCAAGTGTTCGAGAAGATTAGCGCATGGGCGC
CCAGCAAGACGATGGCTCTGATGCCCTCCAGGTTCTCCAGATTGGGCTGGGGATGTGACAAGGGGGCAG
AGGAGCCAGGAGGAGCTGTGCGCCTGAATCTAGCCTGACTGACGAGGGCATAGGCGCAGATCCAGAGC
CACCCGTCGCGGCAATTTGCGGACTGGGACCACAGGCATGTGGCGGCCATTGTCTTCTCCAGCGCCCA
GACAAACCACCATGGACCCGGAACAGAAGATAGTCTGGGCGGCTGGGCACTGGTGTCCCGGAGACGCCG
CCTACCCAGGTGCCCTGCGCCGCGGCGGAAGGTGCCGCAAGCGGATCTGGAGGGAGCGAACTTTCCA
ATGGCGAAGCAGGCGAAGCGTATCGGTCCCTTCCGATCCAATACCACAACGCCACCGCGCGCCACCAG
CGAAGAACCCACAGGCTTCTCCGTTGATTTCAACCTTCTCGGCAGCCTCTCACCCAAGACAGGATTGCC
GCGACGAGCGCCATGGACGAAGGGCTCACATCAGGACACTCTGACTGGTCCGTGGGCTCAGAGGAATCCA
AGGGGTACCAGGAAGTAATTCAGAGTATCGTCCAGGGCCCGGGGACTTTGGGCGGAGTCTGTGACGACAG
AATCGCAGGAAAAGCACCACAAAAGAAATCCCTGTCTGACCTTCAAGGAGGGGGGAGCTGGCCGGGCT
GGGTTTCGAGGGCCAGGTGGCGAACCGATCCGAGAGGTGGAGCCCATGCTCCCGCCCTCTCCAGTGAGC
CAATCTGGTGGAAACAGAGGGCTGAGCCAGAAGAACCAGGGCCACCCGAGCCGAGCTCAGAGTGAGCC
GCAATTCGCGGAAGCAGTGCCTCTCCCGCACTGCCCCATAGGAACTTTTCACTGGACCTTAAGTGGCC
GACATCTGAGTCCAAGTGTGATCAGGCGGGGTAGCAAAAAGCGCCCGCTCGAAGTAGTACCAGGAGC
TGAGGCGAGACGAAGGGAGCCAGGATCAACAGGCAGCCTTCCCGGGCCGACCCAGCTCTCGGCACGT
GAGGCACGCTCCGTGCCCGCCACCTTCAATGCCTATTGTGGTTCCCGAGCCTCTACTAGTGTGGGGCCA
CCAGTGGCTGTGCTGAGCCAATAGGCTTCCCCACCAGGGCGCACCCACGCTGCAGGCCCTCTCTTG
AGGACGTGACCAACAGTATATGTTGAACCTGCACTCCGGGGAGGTCCCAGCCCCGTACCCGTCGATAT
GCCATGCCTGCCTCTGGCCGCCACCTTCCGCCGAAGCGAACTCCCGAGGCCCGCCCGCCCGCGAT
GAACCGACCCAGCTTCAAAGTGTGTAGTAAACCCAGGTGGATATGAGGAAACAGGTTGCCATGACAC
TGCTCGACACGGAGCAGAGTTATGTGGAATCTCTCCGAACACTGATGCAGGGGTATATGCAACCTTTGAA
ACAGCCTGAAAATAGTGTGCTGTGCGACCTTCACTGGTTGACGAGATCTTTGACCAGATTCCCGAGTTG
CTTGAACACCACGAACAATTTCTCGAACAGTTAGACATTGCATGCAGACATGGCACGCACAACAGAAAAG
TTGGTGTCTGCTCGTGCAGTCTTTCAGCAAGGATGTGCTGGTTAACATCTATTAGCTTACATTGACAA
TTTTCTGAATGCCAAGGATGCGGTACGGTTGCTAAGGAAGCCCGACCCGCTTCCCTCAAGTTTCTGGAG
CAATCAATGCGCGAGAACAAGAAAAGCAGGCACTCTCCGACCTTATGATCAAACCCGTACAACGAATCC
CCAGGTATGAGCTGCTCGTGAAGGACTTGTGAAGCACACCCCTGAAGATCATCTGACCACCTCTTCT
GTTGGAGGCCAGAGAAACATTAACAGGTCCCGAGCGAATCAATAAAGGGTGCCTCTGCCGAAGAG
GCTGAGCGCCATGCGAGGGTGTGCAAGGAAATCGAGGCGCATATCGAAGGAATGGAGGACCTGCAAGCCC
CCCTGAGAAGATTCCCTCCGACAGGAAATGGTATTGAAGTGAAAGCGATCGGGGGTAAAAAGGATCGATC
CCTGTTTTTGTTCACAGACTTGATCGTTTGCCTACACTCAAGCGGAAGAGCGGCTCTCTGCGGAGATCT
AGTATGAGTCTTTACACAGCTGCCAGTGTATAGATACAGCATCCAAGTATAAGATGCTGTGAAACTGC
CACTCGAGGATGCAGACATTATCAAGGGTGCCTCTCAGGCGACCAACCGGAAAAATTTCAAAGGCAAT
TTCCCGCTGGACGAGGATCTTACAACCTGGGGCAGATGAGCAAACTGTGAGAGGCTGGGGTTTCT
CACCAGTCACTGGACGACGCCCTGCGGATTTGAGCGCCGCAATGCACAGGGACTTGAGCGAGAAACAGG
CCCTCTGCTACGCTTTGTCTTTCCCTCTACAAAAGTGGAGCTCTGCGCCACCAGACCCGAAGGTACCGA
CAGCTATATCTTGAATTTCTCATCCCGACGCCAGGTTGGGGTTTGAACAGGCTTTTGAAGGACTAAG
CGGAAACTGGCAAGCAGTAAGTCATGCCTGGACCCGAGTTTCTTAAGGCCATTCCGATAATGAAGACAA
GGTCAGGCATGCAGTTCAGTTGTGCTGCGCCTACCTGAACTCCTGTCCTGAGCCAGCCCCGAGGTGTG
GGTTTGAACCTCTGATGGTTACGTTGGGCGAGTTTGCCTGCTGAGTCTGAGGGCAGAACCGGACGTGGAA
GCATGCATAGCCGTGTGCTCCGCACGATTTCTGTGCATCGGGGCGGTCCCTGGCTGCAACCAAGGTGTC
ACCGGGAACCTCTCCCTCTCTGAGAAGTCCGCCGAGACTGCCCCAGAGCCAGCCGGCCCCGAAGTGA

CGTTGAGGCTGCCGACGACGAAGAAGCTGCCACACTCGCCGAGCCTGGTCCCCAGCCCTGCCTGCACATC
TCAATAGCGGGCTCCGGCCTTGAGATGACCCCGGGCTCGGCGAGGGCGATCCTCGACCCGAACTCGTGC
CTTTGACTCTGACAGCGACGACGAATCCTCACCTCTCCAGCGGTACGCTGCAGAGTCAGGCCAGTAG
AAGCACAATATCTTCTCATTGGGAATGAGGAAACACCTAGTAGCAAGGAGGCAACAGCTGAAACCACA
AGCAGTGAAGAGGAACAGGAGCCTGGTTTTTGCCTTTGTCCGGGTCATTGCGCCCCGGTGGCCCCGTG
GAACGTCACCGATGGATGGAAGAGCCCTGAGAAGATCCTACATGGTTCCTTACGCGAGGCAGCCTGGA
GGACCTCTCTCAGTGGACCCCGAGGCATATCAGTCATCAGTGTGGTTGGGAACCGAGGATGGCTGTGT
CACGTCTATCAAAGCTCCGATTCTATCCGGGATAGGAGGAATTCAATGAAACTGCAGCACGCTGCATCTG
TCACTTGCATCTTGTACCTGAACAACCAGGTGTTGCTCTCCCTTGCAAATGGTGAGCTGGTTGTGTATCA
AAGGGAGGCCGGTCACTTCTGGGACCCTCAGAATTTCAAATCAGTCACCCTGGGTACGCAAGGCTCCCT
ATAACTAAGATGGTGTCCGTCCGAGGCAGACTTTGGTGGGATGCCAGAATCGCGTATTGGTCTTGAGCC
CGGACACCCTCCAGTGGAAACATATGTTCTACGTGGGGCAGGACTCTTACGCTGCGTAGCCTGTATGGT
CGATTCCAGTCTGGGCGTTTGGGTGACTCTCAAAGGATCCGCACACGTTTGTCTGTATCACCCGGATACA
TTTGAACAGCTGGCTGAGGTGGACGTTACTCCTCTGTGCACCGGATGCTGGCCGGTAGCGACGCAATTA
TCCGGCAACACAAGGCAGCTTGTGGAGGATCACCGCCCTGCTCGTGTGTGAGGAGTTGCTTTGGGTGGG
GACAAGCCTGGAGTGGTGTGACAATGCCGACTTCTCCTGGCACGGTACGCTGCCCCAGGGCCCCACTG
TCTCCAACCTGGACTCGGCCAGGGACACACTGGGCACGTTAGGTTCTCGCTGCCGTTTACGCTGCCAGATG
GCTTCAATCTTCTGTGTCTACACCACCTCCCCCTCCTGACACGGGCCCCGAAAACTGCCTCCCTCGA
GCACAGGGACTCTCCCTGGCATCGCGGGCCGGCCCTGCCAGACCCAAAAATGCTGGTGATTTCCGGGGGA
GACGGTTATGAAGACTTTCGGCTCTATCAGGGGGCGGCTCCTCTTCTGAGACAGTGGGCCGGGATGACT
CCAATAACACTTGCTTCTCTGGCGGTA

ACGCGTACGCGGCCGCTCGAGCAGAACTCATCTCAGAAGAGGATCTGGCAGCAAATGATATCCTGGATT
ACAAGGATGACGACGATAAGGTTTAA

Protein Sequence: >RC214003 representing NM_014786
 Red=Cloning site Green=Tags(s)

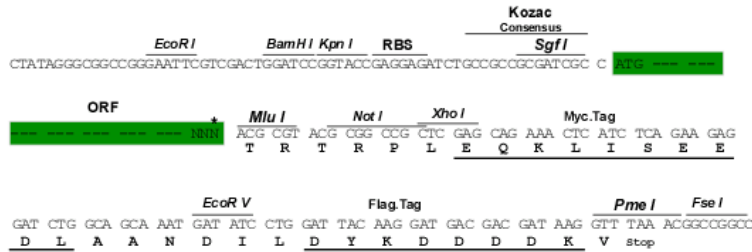
MADGAPRPQLYRSVSFKLLERWSGGPGLREEDTDPGLRRRASCRIPTTAARGQPSRRVSKLASGPLAAPA
 QPRPLRSLSPSVRQLSRRFDAPRLDDGSAGTRDGGVLPAAEEAAEGPARGAWPSVTEMRKLFGGPGSRR
 PSADSESPGTSPDGAWEPPARESRQPPTPPPRTCFPLAGLRSARPLTGPETEGRLRRPQQQERAQRP
 ADGLHSWHIFSQPQAGARASCSSSSIAASYPVSRSRAASSSEEEEEGPPQLPGAQSPAYHGGHSSGSDDD
 RDGEGGHRWGGRPGLRPGSSLLDQDCRPDSDGLNLSMNSAGVSGSPEPPTSPRAPREEGLREWGSPP
 CVPGPQEGLRPMDSVGGAFRVAKVSFPYSLASPAGSRGSSRYSTETLKDDDLWSSRGSGGWVYRSPS
 FGAGEGLLRQARTRAKPGGTSRALRDGGFEPEKSRQRKSLSNPDIASETLTLLSFLRSDLSELVRKP
 GGSSGDRGNSPLDGRDPSAGGPVQLEPIPIPAPASPGTRPTLKDLTATLRRAKSFTCSEKPMARRLPR
 TSALKSSSELLLTPGAEEDPLPLIVQDQYVQEARQVFEKIQRMGAAQDDGSDAPPSPDWAGDVTRGQ
 RSQEELSGPESSLTDEGIGADPEPPVAAF CGLGTTGMWRPLSSSSAQTNHHGPGTEDSLGGWALVSPETP
 PTPGALRRRRKVPPSGSGSELNNGEAGEAYRSLSDPIPQRHRAATSEETGFSVDSNLLGSLSPKTLGP
 ATSAMDEGLTSGHSDWSVGESESKGYQEVISIVQGPGLGRVVDRIAGKAPKKKSLSDPSRRGELAGP
 GFEGPGGEPIREVEPMLPPSSSEPIILVEQRAEPEEPGATRSRAQSERALPEALPPATAHRNFHLDPKLA
 DILSPRLIRRGSKRPARSSHQELRRDEGSQDQTGSLSRARPSSRHRHASVPATFMPPIVPEPPTSVGP
 PVAVPEPIGFPTRAHPTLQAPSLDVDTKQYMLNLHSGEVPAPVVDMPCLPLAAPPSSAEAKPPEAARPAD
 EPTPASKCCSKPQVDMRKHVAMTLLDTEQSYVESLRTLMOGYMQPLKQPENSVLCDPSLVDEIFDQIPEL
 LEHHEQFLEQVRHCMQTHAQQKVGALLVQFSKDVLVNIYSAYIDNFLNAKDAVRVAKEARPAFLKFL
 QSMRENKEKQALSDLMIKPVQRIIPRYELLVKDLLKHTPEDHPDHPLLLEAQRNIKQVAERINKGVRSAE
 AERHARVLQEIIEAHIEGMEDLQAPLRRFLRQEMVIEVKAIGGKKDRSLFLFTDLIVCTTLKRKSGSLRRS
 SMSLYTAASVIDTASKEYKMLWKLPLEDADIKIGASQATNRENIQKAI SRLDEDL TTLGQMSKL SESLGF
 HQSLDDALRDLAAMHRDLSEKQALCYALSFPPTKLELCATRPEGTDSYIFEFPHPDARLGFQAFDEAK
 RKLASSKSCLDPEFLKAIPIMKTRSGMQFSCAAPTLNSCPEPSPEVWVCNSDGYVGVQVCLLSLRAEPDVE
 ACIAVCSARILCIGAVPGLQPRCHREPPPSLRSPPEAPEPAGPELDVEAAADEEAATLAEPGPQCLHI
 SIAGSGLMTPGLGEGDPRPELVFDSDDDESSPSGTLQSQASRSTISSSFGNEETPSKEATAETT
 SSEEQEPGFLPLSGSFGPGGPGTSPMDGRALRRSSHGSFTRGSLEDLLSVDPEAYQSSVWLGTEDGCV
 HVYQSSDSIRDRRNSMKLQHAASVTCILYLNQVFVSLANGELVYVQREAGHFWDQNFKSVTLGTQGS
 ITKMVSVGGRLWCGCQNRVLVLPDTLQLEHMFYVQDSSRCVACMVDSLVWVTLKGSAAHVCLYHPDT
 FEQLAEVDVTPPVHRLAGSDAIRQHKAACLRI TALLVCEELLWVGTSGAVVL TMPTSPGTVSCPRAPL
 SPTGLGQGHGTGHVRFLLAAVQLPDGFNLLCPTPPPPPTDGPEKLP SLEHRDSPWHRGPAPARPKMLVISGG
 DGYEDFRLSSGGSSSETVGRDDSTNHLLLRV

TRTRPLEQKLISEEDLAANDILDYKDDDDKV

Restriction Sites: Sgfl-MluI

Cloning Scheme:

Cloning sites used for ORF Shuttling:



* The last codon before the Stop codon of the ORF

ACCN: NM_014786

ORF Size: 6189 bp

OTI Disclaimer: The molecular sequence of this clone aligns with the gene accession number as a point of reference only. However, individual transcript sequences of the same gene can differ through naturally occurring variations (e.g. polymorphisms), each with its own valid existence. This clone is substantially in agreement with the reference, but a complete review of all prevailing variants is recommended prior to use. [More info](#)

OTI Annotation: This clone was engineered to express the complete ORF with an expression tag. Expression varies depending on the nature of the gene.

Components: The ORF clone is ion-exchange column purified and shipped in a 2D barcoded Matrix tube containing 10ug of transfection-ready, dried plasmid DNA (reconstitute with 100 ul of water).

Reconstitution Method:

1. Centrifuge at 5,000xg for 5min.
2. Carefully open the tube and add 100ul of sterile water to dissolve the DNA.
3. Close the tube and incubate for 10 minutes at room temperature.
4. Briefly vortex the tube and then do a quick spin (less than 5000xg) to concentrate the liquid at the bottom.
5. Store the suspended plasmid at -20°C. The DNA is stable for at least one year from date of shipping when stored at -20°C.

RefSeq: [NM_014786.2](#), [NM_014786.3](#), [NP_055601.2](#)
RefSeq Size: 7830 bp

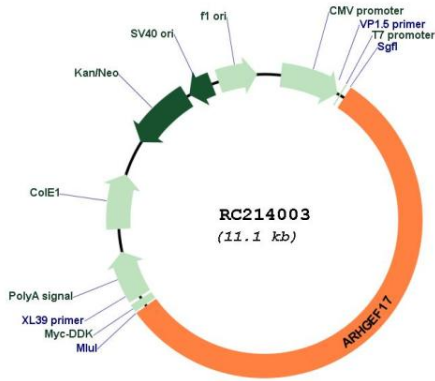
RefSeq ORF: 6192 bp

Locus ID: 9828

UniProt ID: [Q96PE2](#)
Cytogenetics: 11q13.4

Protein Families: Druggable Genome
MW: 221.7 kDa
Gene Summary: Acts as guanine nucleotide exchange factor (GEF) for RhoA GTPases.[UniProtKB/Swiss-Prot Function]

Product images:



Circular map for RC214003