

Product datasheet for **RC214001L2V**

SKP2 (NM_005983) Human Tagged ORF Clone Lentiviral Particle

Product data:

Product Type:	Lentiviral Particles
Product Name:	SKP2 (NM_005983) Human Tagged ORF Clone Lentiviral Particle
Symbol:	SKP2
Synonyms:	FBL1; FBXL1; FLB1; p45
Mammalian Cell Selection:	None
Vector:	pLenti-C-mGFP (PS100071)
Tag:	mGFP
ACCN:	NM_005983
ORF Size:	1272 bp
ORF Nucleotide Sequence:	The ORF insert of this clone is exactly the same as(RC214001).
OTI Disclaimer:	The molecular sequence of this clone aligns with the gene accession number as a point of reference only. However, individual transcript sequences of the same gene can differ through naturally occurring variations (e.g. polymorphisms), each with its own valid existence. This clone is substantially in agreement with the reference, but a complete review of all prevailing variants is recommended prior to use. More info
OTI Annotation:	This clone was engineered to express the complete ORF with an expression tag. Expression varies depending on the nature of the gene.
RefSeq:	NM_005983.2
RefSeq Size:	1600 bp
RefSeq ORF:	1275 bp
Locus ID:	6502
UniProt ID:	Q13309
Cytogenetics:	5p13.2
Domains:	LRR, F-box, LRR_CC
Protein Families:	Druggable Genome

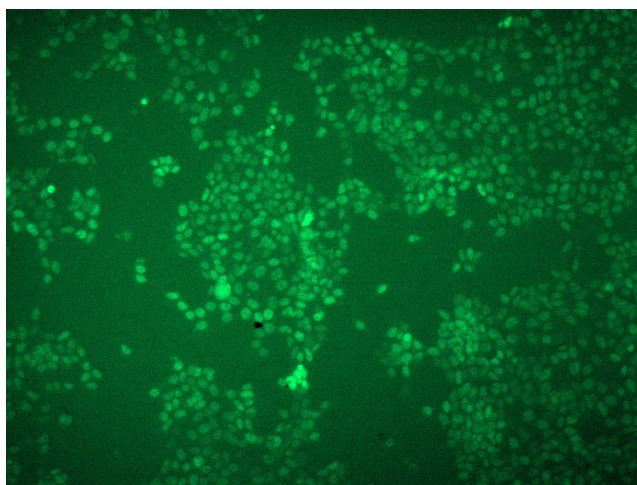

[View online »](#)

Protein Pathways: Acute myeloid leukemia, Apoptosis, Cell cycle, Oocyte meiosis, p53 signaling pathway, Pathways in cancer, Progesterone-mediated oocyte maturation, Small cell lung cancer, Ubiquitin mediated proteolysis

MW: 47.6 kDa

Gene Summary: This gene encodes a member of the F-box protein family which is characterized by an approximately 40 amino acid motif, the F-box. The F-box proteins constitute one of the four subunits of ubiquitin protein ligase complex called SCFs (SKP1-cullin-F-box), which function in phosphorylation-dependent ubiquitination. The F-box proteins are divided into 3 classes: Fbws containing WD-40 domains, Fbls containing leucine-rich repeats, and Fbxs containing either different protein-protein interaction modules or no recognizable motifs. The protein encoded by this gene belongs to the Fbls class; in addition to an F-box, this protein contains 10 tandem leucine-rich repeats. This protein is an essential element of the cyclin A-CDK2 S-phase kinase. It specifically recognizes phosphorylated cyclin-dependent kinase inhibitor 1B (CDKN1B, also referred to as p27 or KIP1) predominantly in S phase and interacts with S-phase kinase-associated protein 1 (SKP1 or p19). In addition, this gene is established as a protooncogene causally involved in the pathogenesis of lymphomas. Alternative splicing of this gene generates three transcript variants encoding different isoforms. [provided by RefSeq, Jul 2011]

Product images:



[RC214001L2] was used to prepare Lentiviral particles using [TR30037] packaging kit. HEK293T cells were transduced with RC214001L2V particle to overexpress human SKP2-mGFP fusion protein.