

Product datasheet for **RC214000**

PPP2R5C (NM_002719) Human Tagged ORF Clone

Product data:

Product Type:	Expression Plasmids
Product Name:	PPP2R5C (NM_002719) Human Tagged ORF Clone
Tag:	Myc-DDK
Symbol:	PPP2R5C
Synonyms:	B56G; B56gamma; PR61G
Mammalian Cell Selection:	Neomycin
Vector:	pCMV6-Entry (PS100001)
E. coli Selection:	Kanamycin (25 ug/mL)



[View online »](#)

ORF Nucleotide Sequence:

>RC214000 representing NM_002719
 Red=Cloning site Blue=ORF Green=Tags(s)

TTTTGTAATACGACTCACTATAGGGCGGCCGGAATTCGTCGACTGGATCCGGTACCGAGGAGATCTGCC
 GCC**GCGATCGCC**

ATGTTGACATGTAATAAAGCGGGCAGCAGGATGGTGGTGGATGCGGCCAACTCCAATGGGCCTTTCCAGC
 CCGTGGTCTTCTCCATATTCGAGATGTTCTCTGCTGATCAAGAGAAGCTTTTATCCAGAAGTTACG
 TCAGTGTTCGCTCCTCTTTGACTTTGTTCTGATCCACTAAGTGACCTAAAGTGGAAAGGAAAGTAAACGA
 GCTGCTTTAAGTGAATGGTAGAATATATCACCCATAATCGGAATGTGATCACAGAGCCTATTTACCCAG
 AAGTAGTCCATATGTTTGCAGTTAACATGTTTGAACATTACCACCTTCTCCAATCCTACGGGAGCGGA
 ATTTGACCCGGAGGAAGATGAACCAACGTTAGAAGCAGCCTGGCCTCATCTACAGCTTGTATGAATTT
 TTCTTAAGATTTTAGAGTCTCCAGATTTCCAACCTAATATAGCGAAGAAATATATTGATCAGAAGTTG
 TATTGCAGCTTTAGAGCTTTTACAGTGAAGATCCTCGGGAGAGAGATTTTCTAAAACACCCTTCA
 CAGAATCTATGGGAAATTCCTAGGCTTGAAGCTTACATCAGAAAACAGATAAAATATATTTTATAGG
 TTTATTTATGAAACAGAGCATCATAATGGCATAGCAGAGTTACTGGAAATATTGGGAAAGTATAATTAATG
 GATTTGCCTTACCACTAAAAGAAGACACAAGATTTTCTTATTGAAGGTGTTACTACCTTTGCACAAAGT
 GAAATCTCTGAGTGTCTACCATCCCCAGCTGGCATACTGTGTAGTGCAGTTTTAGAAAAGGACAGCACC
 CTCACGGAACCAAGTGGTATGGCACTTCTCAAATACTGGCCAAAGACTCAGAGTCCAAAAGAAGTAAATGT
 TCTTAAACGAATTAGAAGAGATTTAGATGTCAATGAACCATCAGAAATTTGTGAAGATCATGGAACCCCT
 CTTCCGGCAGTTGGCCAAATGTGTCTCCAGCCCACTTCCAGGTGGCAGAGCGAGCTCTCTATTACTGG
 AATAATGAATACATCATGAGTTTAAATCAGTGACAACGCAGCGAAGATTCTGCCCATCATGTTTCTTCTCT
 TGTACCGCAACTCAAAGACCCATTGGAACAAGACAATACATGGCTTGATATACAACGCCCTTGAAGCTTT
 CATGGAGATGAACCAAAAAGCTATTTGATGACTGTACACAACAGTTCAAAGCAGAGAAACTAAAAGAGAAG
 CTA AAAATGAAAGAACGGGAAGAAGCATGGGTTAAAATAGAAAATCTAGCCAAAGCCAATCCCCAGTACA
 CAGTGTATAGTCAAGCCAGCACCATGAGCATTCCGGTTGCAATGGAGACAGATGGGCCTTTATTTGAAGA
 TGTGCAGATGCTGAGAAAGACAGTGAAGGACGAGGCTCATCAGGCACAGAAAGATCCGAAGAAGGACCGT
 CCTCTTGACGCCGCAAGTCCGAGCTGCCTCAGGACCCCCACCAAGAAAGCCTTGAAGCTCACTGCA
 GGGCCGATGAGCTGGCCTCCAGGACGGCCGC

ACGCGTACGCGGCCGCTCGAGCAGAAACTCATCTCAGAAGAGGATCTGGCAGCAAATGATATCCTGGATT
 ACAAGGATGACGACGATAAGGTTTAA

Protein Sequence:

>RC214000 representing NM_002719
 Red=Cloning site Green=Tags(s)

MLTCNKAGSRMVDAANSNGPFQPVVLLHIRDVPPADQEKLFIQKLRQCCVLFDFVSDPLSDLKWKVEVKR
 AALSEMVEYITHNRNVIETIYPEVVHMF AVNMFRTLPPSSNPTGAEFDPEEDEPTLEAAWPHLQLVYEF
 FLRFLES PDFQPNIAKKYIDQKFLVQLLELFDSEDPREDFLKTTLHRIYKFLGLRAYIRKQINNIFYR
 FIYETEHNGIAELLEILGSIINGFALPLKEEHKIFLLKVLLPLHKVKSLSVYHPQLAYCVVQFLEKDST
 LTEPVVMALLKYWPKTHSPKEVMFLNELEEILDVIEPSEFVKIMEPLFRQLAKCVSSPHFQAERALYYW
 NNEYIMSLISDNAKILPIMFPSLYRNSKTHWNKTIHGLIYNALKLFMEMNQKLFDDCTQQFKAELKEK
 LKMKEREEAWVKIENLAKANPQYTVYSQASTMSIPVAMETDGPLFEDVQMLRKTVKDEAHQAQKDPKKDR
 PLARRKSELQPDPHTKKALEAHCRADELASQDGR

TRTRPLEQKLISEEDLAANDILDYKDDDDKV

Chromatograms:

https://cdn.origene.com/chromatograms/mg3428_c10.zip

Restriction Sites:

SgfI-MluI

Cloning Scheme:


ACCN: NM_002719

ORF Size: 1572 bp

OTI Disclaimer: The molecular sequence of this clone aligns with the gene accession number as a point of reference only. However, individual transcript sequences of the same gene can differ through naturally occurring variations (e.g. polymorphisms), each with its own valid existence. This clone is substantially in agreement with the reference, but a complete review of all prevailing variants is recommended prior to use. [More info](#)

OTI Annotation: This clone was engineered to express the complete ORF with an expression tag. Expression varies depending on the nature of the gene.

Components: The ORF clone is ion-exchange column purified and shipped in a 2D barcoded Matrix tube containing 10ug of transfection-ready, dried plasmid DNA (reconstitute with 100 ul of water).

- Reconstitution Method:**
1. Centrifuge at 5,000xg for 5min.
 2. Carefully open the tube and add 100ul of sterile water to dissolve the DNA.
 3. Close the tube and incubate for 10 minutes at room temperature.
 4. Briefly vortex the tube and then do a quick spin (less than 5000xg) to concentrate the liquid at the bottom.
 5. Store the suspended plasmid at -20°C. The DNA is stable for at least one year from date of shipping when stored at -20°C.

RefSeq: [NM_002719.4](#)

RefSeq Size: 4167 bp

RefSeq ORF: 1575 bp

Locus ID: 5527

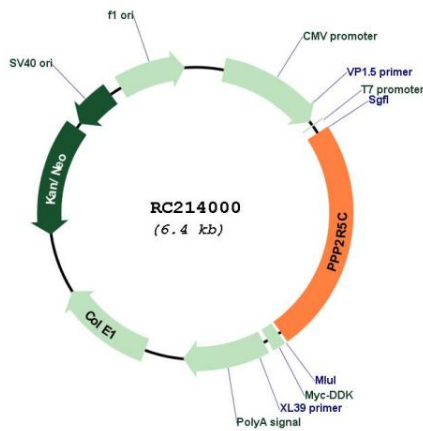
UniProt ID: [Q13362](#)

Cytogenetics: 14q32.31

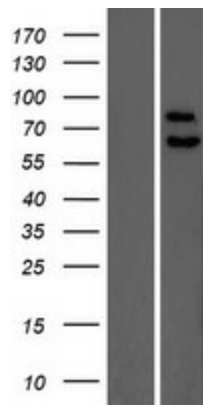
Domains: B56
Protein Families: Druggable Genome, Phosphatase
Protein Pathways: Oocyte meiosis, Wnt signaling pathway
MW: 60.9 kDa

Gene Summary: The product of this gene belongs to the phosphatase 2A regulatory subunit B family. Protein phosphatase 2A is one of the four major Ser/Thr phosphatases, and it is implicated in the negative control of cell growth and division. It consists of a common heteromeric core enzyme, which is composed of a catalytic subunit and a constant regulatory subunit, that associates with a variety of regulatory subunits. The B regulatory subunit might modulate substrate selectivity and catalytic activity. This gene encodes a gamma isoform of the regulatory subunit B56 subfamily. Alternatively spliced transcript variants encoding different isoforms have been identified. [provided by RefSeq, Jul 2008]

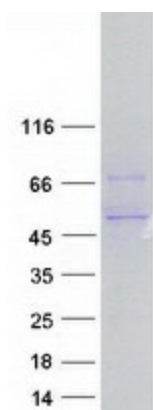
Product images:



Circular map for RC214000



Western blot validation of overexpression lysate (Cat# [LY419145]) using anti-DDK antibody (Cat# [TA50011-100]). Left: Cell lysates from untransfected HEK293T cells; Right: Cell lysates from HEK293T cells transfected with RC214000 using transfection reagent MegaTran 2.0 (Cat# [TT210002]).



Coomassie blue staining of purified PPP2R5C protein (Cat# [TP314000]). The protein was produced from HEK293T cells transfected with PPP2R5C cDNA clone (Cat# RC214000) using MegaTran 2.0 (Cat# [TT210002]).