

Product datasheet for **RC213996**

GRAF (ARHGAP26) (NM_015071) Human Tagged ORF Clone

Product data:

Product Type:	Expression Plasmids
Product Name:	GRAF (ARHGAP26) (NM_015071) Human Tagged ORF Clone
Tag:	Myc-DDK
Symbol:	GRAF
Synonyms:	GRAF; GRAF1; OPHN1L; OPHN1L1
Mammalian Cell Selection:	Neomycin
Vector:	pCMV6-Entry (PS100001)
E. coli Selection:	Kanamycin (25 ug/mL)



[View online »](#)

ORF Nucleotide Sequence:

>RC213996 representing NM_015071
 Red=Cloning site Blue=ORF Green=Tags(s)

TTTTGTAATACGACTCACTATAGGGCGGCCGGAATTCGTCGACTGGATCCGGTACCGAGGAGATCTGCC
 GCC**CGGATCGCC**

ATGGGGCTCCAGCGCTCGAGTTCAGCGACTGCTGCCTCGATAGTCCGCACTTCCGAGAGACGCTCAAGT
 CGCACGAAGCAGAGCTGGACAAGACCAACAAATTCATCAAGGAGCTCATCAAGGACGGGAAGTCACTCAT
 AAGCGCGCTCAAGAATTTGTCTTCAGCGAAGCGGAAGTTTGCAGATTCCTTAAATGAATTTAAATTTTCAG
 TGCATAGGAGATGCAGAAACAGATGATGAGATGTGTATAGCAAGATCTTTCAGGAGTTTCCACTGTCC
 TCAGGAATCTTGAAGTGAACGGATACGGATGATTGAGAATGCCAGCGAGGTGCTCATCACTCCCTTGGGA
 GAAGTTTCGAAAGGAACAGATCGGGGCTGCCAAGGAAGCCAAAAGAAGTATGACAAAGAGACAGAAAAG
 TATTGTGGCATCTTAGAAAAACACTTGAATTTGTCTTCCAAAAAGAAAGAATCTCAGCTTCAGGAGGCAG
 ACAGCCAAGTGGACCTGGTCCGGCAGCATTCTATGAAGTATCCCTGGAATATGTCTTCAAGGTGCAGGA
 AGTCCAAGAGAGAAAGATGTTTGTAGTTTGTGGAGCCTCTGCTGGCCTTCTGCAAGGACTCTTCACTTTC
 TATCACCATGGTTACGAACTGGCCAAGGATTTCCGGGACTTCAAGACACAGTTAACCATAGCATACAGA
 ACACAAGAAATCGCTTTGAAGGCACTAGATCAGAAGTGAATCACTGATGAAAAAGATGAAGGAGATCC
 CCTTGAGCACAAGACCATCAGTCCCTACACCATGGAGGGATACCTCTACGTGCAGGAGAAACGCTCACTTT
 GGAACCTCTTGGGTGAAGCACTACTGTACATATCAACGGGATTCAAAACAAATCACCATGGTACCATTTG
 ACCAAAAGTCAGGAGGAAAAGGGGGAGAAGATGAATCAGTTATCCTCAAATCCTGCACACGGCGGAAAAC
 AGACTCCATTGAGAAGAGGTTTTGCTTTGATGTGGAAGCAGTAGACAGGCCAGGGGTTATCACCATGCAA
 GCTTTGTGCGAAGAGGACCGGAGGCTCTGGATGGAAGCCATGGATGGCCGGGAACCTGTCTACAACCTCGA
 ACAAAAGACGCCAGAGTGAAGGGACTCGCAGTTGGACAGCATTGGCTTCAAGTAAATCAGGAAATGCAT
 CCATGCTGTGGAACACAGAGGGATCAACGAGCAAGGGCTGTATCGAATTGTGGGTGTCAACTCCAGAGTG
 CAGAAGTTGCTGAGTGTCTGATGGACCCAAAGACTGCTTCTGAGACAGAAAACAGATATCTGTGCTGAAT
 GGGAGATAAAGACCATCACTAGTGTCTGAAGACCTACCTAAGAATGCTTCCAGGACCACTCATGATGTA
 CCAGTTTCAAAGAAGTTTCATCAAAGCAGCAAACTGGAGAACCAGGAGTCTCGGGTCTCTGAAATCCAC
 AGCCTTGTTCATCGGCTCCAGAGAAAATCGGCAGATGTTACAGCTGCTCATGAACCACTTGGCAAATG
 TTGCTAACCAACCAAGCAGAAATTTGATGACGGTGGCAAACCTTGGTGTGGTGTGGACCCACTCTGCT
 GAGGCCTCAGGAAGAAACAGTAGCAGCCATCATGGACATCAAATTCAGAACATTGTCTTGGATCCTA
 ATAGAAAACCACGAAAAGATATTTAACACCGTGCCCGATATGCCTCTACCAATGCCAGCTGCACCTGT
 CTCGGAAGAAGAGCAGTACTCCAAGCCCCGTCTGCAGCGAGAGGCCCTGACGCTCTTCCACACCGT
 TCAGTCAACAGAGAAAACAGGAACAAAGGAACAGCATCATCAACTCCAGTTTGAATCTGTCTCATCAAAT
 CCAAACAGCATCCTTAATTCAGCAGCAGCTTACAGCCAAATGAACTCCAGTGACCCAGACCTGGCTG
 TGGTCAAACCCACCCGGCCAACTCACTCCCCCGAATCCAAGCCAACTTCAACCCCTCTCGCCATCTTG
 GCCCATGTTCTCGGCGCCATCCAGCCCTATGCCACCTCATCCACGTCCAGCGACTCATCCCCCGTCAGG
 TCTGTTGACGGGTTTGTGGTTTTCTGTTGCTGCCGTTGTTCTCTCATTGGCTCGGTCTCTCTCATG
 CAGTGTTCAGCTCCTCGTCAACTTTGTCCCTGCCATCCAACTGCACTTGTCTTTTACAGGCCAGAA
 AGAAGCGGTACATGAAGACTCCAGCACACCGTTCCGGAAGGCAAAAGCCTTGTATGCCTGCAAAGCTGAA
 CATGACTCAGAACTTTCGTTACAGCAGGACCGTCTTCGATAATGTTCAACCATCTCAGGAGCCTGGCT
 GGTGGAGGGGACTCTGAACGAAAGACTGGCCTCATCCCTGAGAATTACGTGGAGTTCCTC

ACGCGTACGCGGCCGCTCGAGCAGAACTCATCTCAGAAGAGGATCTGGCAGCAAATGATATCCTGGATT
 ACAAGGATGACGACGATAAGGTTTAA

Protein Sequence: >RC213996 representing NM_015071
Red=Cloning site Green=Tags(s)

MGLPALEFSDCCLDSPHFRETLKSHEAELDKTNKFIKELIKDGGKSLISALKNLSAKRKFADSLNEFKFQ
CIGDAETDDEMCIARSLQEFATVLRNLEDERIRMIENASEVLITPLEKFRKEQIGAAKEAKKKYDKETEK
YCGILEKHLNLSKKKESQLQEADSQVDLVRQHFYEVSLEYVFKVQEVQERKMFVEPLLAFLQGLFTF
YHHGYELAKDFGDFKTQLTISIQNTRNRFEGTRSEVESLMKKMKENPLEHKTISPYTMEGLYVQEKRFH
GTSWVKHYCTYQRDSKQITMVPFDQKSGGKGEDESIVLKSTRRKTDSIEKRFCFDVEAVDRPGVITMQ
ALSEEDRRLWMEAMDGREPVYNSNKDSQSEGTAQLDSIGFSIIRKCIHAVETRGINEQGLYRIVGVNSRV
QKLLSVLMDPKTASETETDICAWEIKTITSALKTYLRMLPGPLMMYQFQRSFIKAAKLENQESRVSEIH
SLVHRLPEKNRQMLQLLMNHLANVANNHKQNLMTVANLGVVFGPTLLRPQEETVAAIMDIKFQNIIVIEIL
IENHEKIFNTVPDMPLTNAQLHLRKKSSDSKPPSCSERPLTLFHTVQSTEQEQRNSIINSSLESVSSN
PNSILNSSSSLQPNMSSDPDLAVVKPTRPNLPPNPSPSPLSPSWPMF SAPSSPMPTSTSSDSSPVR
SVAGFVWF SVAAVVLSLARSSLHAVF SLLVNFVPCPNLHLLFDRPEEAVHEDSSTPFRKAKALYACKAE
HDELSFTAGTVFDNVHPSQEPGWLEGLNGKTGLIPENYVEFL

TRTRPLEQKLISEEDLAANDILDYKDDDDKV

Chromatograms: https://cdn.origene.com/chromatograms/mg3521_h04.zip

Restriction Sites: Sgfl-Mlul

Cloning Scheme:


ACCN: NM_015071

ORF Size: 2442 bp

OTI Disclaimer: The molecular sequence of this clone aligns with the gene accession number as a point of reference only. However, individual transcript sequences of the same gene can differ through naturally occurring variations (e.g. polymorphisms), each with its own valid existence. This clone is substantially in agreement with the reference, but a complete review of all prevailing variants is recommended prior to use. [More info](#)

OTI Annotation: This clone was engineered to express the complete ORF with an expression tag. Expression varies depending on the nature of the gene.

Components: The ORF clone is ion-exchange column purified and shipped in a 2D barcoded Matrix tube containing 10ug of transfection-ready, dried plasmid DNA (reconstitute with 100 ul of water).

Reconstitution Method:

1. Centrifuge at 5,000xg for 5min.
2. Carefully open the tube and add 100ul of sterile water to dissolve the DNA.
3. Close the tube and incubate for 10 minutes at room temperature.
4. Briefly vortex the tube and then do a quick spin (less than 5000xg) to concentrate the liquid at the bottom.
5. Store the suspended plasmid at -20°C. The DNA is stable for at least one year from date of shipping when stored at -20°C.

RefSeq: [NM_015071.3](#)

RefSeq Size: 6518 bp

RefSeq ORF: 2445 bp

Locus ID: 23092

UniProt ID: [Q9UNA1](#)

Cytogenetics: 5q31.3

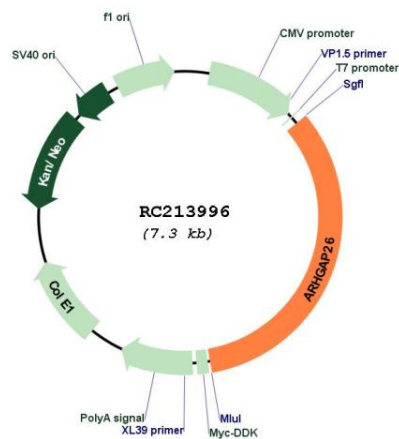
Domains: RhoGAP, SH3, PH

Protein Families: Druggable Genome

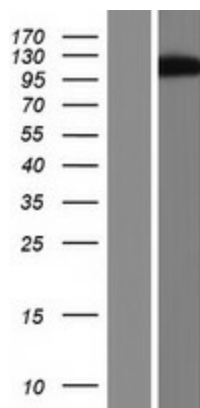
MW: 92.1 kDa

Gene Summary: Interaction of a cell with the extracellular matrix triggers integrin cell surface receptors to begin signaling cascades that regulate the organization of the actin-cytoskeleton. One of the proteins involved in these cascades is focal adhesion kinase. The protein encoded by this gene is a GTPase activating protein that binds to focal adhesion kinase and mediates the activity of the GTP binding proteins RhoA and Cdc42. Defects in this gene are a cause of juvenile myelomonocytic leukemia (JMML). Multiple transcript variants encoding different isoforms have been found for this gene. [provided by RefSeq, Mar 2017]

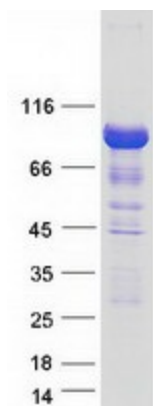
Product images:



Circular map for RC213996



Western blot validation of overexpression lysate (Cat# [LY414809]) using anti-DDK antibody (Cat# [TA50011-100]). Left: Cell lysates from untransfected HEK293T cells; Right: Cell lysates from HEK293T cells transfected with RC213996 using transfection reagent MegaTran 2.0 (Cat# [TT210002]).



Coomassie blue staining of purified ARHGAP26 protein (Cat# [TP313996]). The protein was produced from HEK293T cells transfected with ARHGAP26 cDNA clone (Cat# RC213996) using MegaTran 2.0 (Cat# [TT210002]).