

## Product datasheet for **RC213993**

### ATPase Inhibitory Factor 1 (ATPIF1) (NM\_178191) Human Tagged ORF Clone

#### Product data:

**Product Type:** Expression Plasmids  
**Product Name:** ATPase Inhibitory Factor 1 (ATPIF1) (NM\_178191) Human Tagged ORF Clone  
**Tag:** Myc-DDK  
**Symbol:** ATPase Inhibitory Factor 1  
**Synonyms:** ATP1; ATPIF1; ATP1P; IP  
**Mammalian Cell Selection:** Neomycin  
**Vector:** pCMV6-Entry (PS100001)  
**E. coli Selection:** Kanamycin (25 ug/mL)  
**ORF Nucleotide Sequence:** >RC213993 representing NM\_178191  
Red=Cloning site Blue=ORF Green=Tags(s)

TTTTGTAATACGACTCACTATAGGGCGGCCGGAATTCGTCGACTGGATCCGGTACCGAGGAGATCTGCC  
GCC**CGATCGCC**

**ATGGCAGTGACGGCGTTGGCGGCGGGACGTGGCTTGGCGTGTGGGGCGTGAGGACCATGCAAGCCCGAG  
GCTTCGGCTCGGATCAGTCCGAGAATGTCGACCGGGGCGGGCTCCATCCGGGAAGCCGGTGGGGCCTT  
CGGAAAGAGAGACAGGCTGAAGAGGAACGATATTTCCGG**

**ACGGTACGCGGCCGCTCGAGCAGAACTCATCTCAGAAGAGGATCTGGCAGCAAATGATATCCTGGATT  
ACAAGGATGACGACGATAAGGTTTAA**

**Protein Sequence:** >RC213993 representing NM\_178191  
Red=Cloning site Green=Tags(s)

MAVTALAARTWLGWGVRTMQARGFGSDQSENVDRGAGSIREAGGAFGKREQAEEERYFR

**TRTRPLEQKLISEEDLAANDILDYKDDDDKV**

**Chromatograms:** [https://cdn.origene.com/chromatograms/mk6496\\_c07.zip](https://cdn.origene.com/chromatograms/mk6496_c07.zip)

**Restriction Sites:** SgfI-MluI



[View online »](#)

**Cloning Scheme:**


**ACCN:** NM\_178191

**ORF Size:** 180 bp

**OTI Disclaimer:** The molecular sequence of this clone aligns with the gene accession number as a point of reference only. However, individual transcript sequences of the same gene can differ through naturally occurring variations (e.g. polymorphisms), each with its own valid existence. This clone is substantially in agreement with the reference, but a complete review of all prevailing variants is recommended prior to use. [More info](#)

**OTI Annotation:** This clone was engineered to express the complete ORF with an expression tag. Expression varies depending on the nature of the gene.

**Components:** The ORF clone is ion-exchange column purified and shipped in a 2D barcoded Matrix tube containing 10ug of transfection-ready, dried plasmid DNA (reconstitute with 100 ul of water).

- Reconstitution Method:**
1. Centrifuge at 5,000xg for 5min.
  2. Carefully open the tube and add 100ul of sterile water to dissolve the DNA.
  3. Close the tube and incubate for 10 minutes at room temperature.
  4. Briefly vortex the tube and then do a quick spin (less than 5000xg) to concentrate the liquid at the bottom.
  5. Store the suspended plasmid at -20°C. The DNA is stable for at least one year from date of shipping when stored at -20°C.

**RefSeq:** [NM\\_178191.2](#)

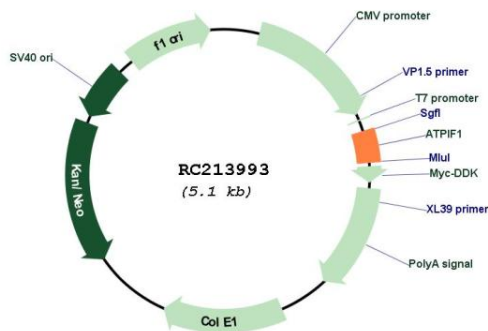
**RefSeq Size:** 1929 bp

**RefSeq ORF:** 183 bp

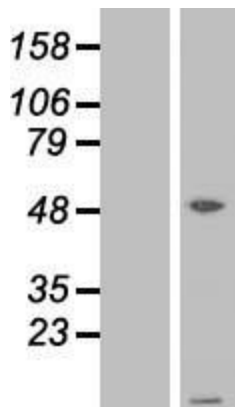
Locus ID: 93974  
 UniProt ID: [Q9UII2](#)  
 Cytogenetics: 1p35.3  
 MW: 3.8 kDa

**Gene Summary:** This gene encodes a mitochondrial ATPase inhibitor. Alternative splicing occurs at this locus and three transcript variants encoding distinct isoforms have been identified. [provided by RefSeq, Jul 2008]

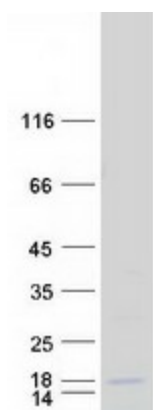
**Product images:**



Circular map for RC213993



Western blot validation of overexpression lysate (Cat# [LY406020]) using anti-DDK antibody (Cat# [TA50011-100]). Left: Cell lysates from untransfected HEK293T cells; Right: Cell lysates from HEK293T cells transfected with RC213993 using transfection reagent MegaTran 2.0 (Cat# [TT210002]).



Coomassie blue staining of purified ATP5IF1 protein (Cat# [TP313993]). The protein was produced from HEK293T cells transfected with ATP5IF1 cDNA clone (Cat# RC213993) using MegaTran 2.0 (Cat# [TT210002]).