

## Product datasheet for **RC213977**

### Kazrin (KAZN) (NM\_201628) Human Tagged ORF Clone

#### Product data:

Product Type:	Expression Plasmids
Product Name:	Kazrin (KAZN) (NM_201628) Human Tagged ORF Clone
Tag:	Myc-DDK
Symbol:	Kazrin
Synonyms:	C1orf196; KAZ
Mammalian Cell Selection:	Neomycin
Vector:	pCMV6-Entry (PS100001)
E. coli Selection:	Kanamycin (25 ug/mL)



[View online »](#)

**ORF Nucleotide Sequence:**

>RC213977 representing NM\_201628  
 Red=Cloning site Blue=ORF Green=Tags(s)

TTTTGTAATACGACTCACTATAGGGCGGCCGGAATTCGTCGACTGGATCCGGTACCGAGGAGATCTGCC  
 GCC**CGGATCGCC**

ATGATGGAAGACAATAAGCAGCTCGCGCTCCGCATCGATGGGGCGGTCCAGTCGCCAGCCAGGAGGTGA  
 CCAACCTGCGAGCCGAACCTCACGGCCACCAACCGGAGACTGGCGGAACTGAGCGGCGGGCGGCCCGG  
 CCCGGGCCCGGGAGCCGCGGCCAGCGCCTCGGCGGCGGGGACTCGGCGGCGACGAACATGGAGAACCC  
 CAGCTTGAGCGCAAGTCTCTGCGGGAAGAAGTGTGCGGCTCCAGGAGGAAGTTCACCTTCTCCGGC  
 AGATGAAGGAGATGTTGGCGAAGGACCTGGAGGAGTCGAGGGCGGCAAGTCTCTGAGGTCTCTCGGC  
 CACCGAGCTCAGGTCCAGCTGGCCAGAAGGAGCAGGAGCTAGCCAGAGCCAAAGAAGCCTTGCAGGCC  
 ATGAAAGCTGATCGAAGCGCTAAAGGGCGAGAAGACAGACCTGGTGAAGCCAGATGCAGCAGCTGTATG  
 CCACACTGGAGAGCCGCGAGGAGCAGCTCCGAGACTTCATCCGCAACTATGAGCAGCACCACAAGGAGAG  
 CGAGGATCGGGTCAAAGCGCTGGCAAGGAGAAGGACCTGCTGGAGCGTGAGAAGTGGGAGCTGCGGCGC  
 CAAGCCAAGGAGGCCACAGACCACGCCACGGCACTGCGCTCCAGCTGGACCTCAAGGACAACCGGATGA  
 AGGAGCTGGAGGCCGAGCTGGCCATGGCCAAACAGTCCTTAGCTACGCTGACCAAGGACGTCCTCCAGCG  
 GCATTCCTCGCCATGCCGGGCGAGACGGTGTCAATGGCAACCAGGAGTGGGTGGTGCAGGCGGACCTC  
 CCGCTGACCGCAGCCATCCGGCAGAGTCAACAGACTCTTACCCTCACACCCCTCACCTGCGGACC  
 GGCAAGCGGTGAGGTGAGCCCTGCCACTCCCGGCGAGCCTCTGTATCTCCGACGCATCTGCCGCCGA  
 AGGCGACCGGTGTCACACCGAGCGACATCACTCCCTCGACACCGGACACACTCCCTCTGCAACGGC  
 GACAGTCCCGCCAGTTCAGAAGAACCTGCACAACCTATTGTACAGTCACTAGAGGATCTTGAAGACC  
 AAAAAACGGAAAAAGAAGAAAGAGAAGATGGGATTCGGCTCCATCTCCCGCTCTTCGCGAGGGAAAGCA  
 GCGGAAGTCCCTCGACCCGCGCCTTTTGATGACTCGGACAGCCAGTGCAGCCCAACGCGGCGAGGCCTC  
 AGCCTGTGCGAAGGCGAGGAGCAGATGGACCGGCTGCAGCAGGTGGAGCTGGTGAAGGACACCCCTATGT  
 CCCACTGGAAGCGGGCACCGTCCAGGCCTGGCTGGAGGTGGTATGGCCATGCCTATGTACGTCAAGGC  
 CTGCACGGAGAACGTGAAGAGCGGGAAGGTGCTGCTGAGCCTGAGTGACGAGGACCTGCAGCTGGCCTT  
 GGGGTGTGAGCTCCCTGCACCGGCGAAGCTGCGCCTGGCCATCGAGGACTACCGTATGCCGAGGCGAG  
 GCCGCAGCCTGTCAAAGCTGCCGAGCTGGACCATCACTGGGTGGCAAGGCCTGGCTGAATGACATTGG  
 CCTGTCCAGTACTCCAGGCCTTTCAGAACCACCTGGTTGATGGGCGGATGCTGAATCCCTGATGAAG  
 CGAGACCTGGAGAAGCACCTGAACGTGTCCAAGAAGTTCACCAGGTGAGCATCCTGCTGGGATCGAGC  
 TGCTGTACCAAGTGAACCTCAGCAGGGAGGCCCTCCAGGAGCGCCGGGCCGCTGCGAGAGCGAGAACAT  
 TGACCCCGTGGTGTGGACCAACCAGCGGTGCTCAAGTGGTTCGAGACATCGACCTGAAGGAGTACGCA  
 GACAACCTGACCAACAGCGGCGTCCATGGTGTGTGCTGGTGTGGAGCCACATTCAATGCCGAGGCCA  
 TGGCCACTGCCCTGGGCATCCCCAGTGGGAAGCACATCTCCGGAGACACTGGCAGAGGAGATGAGCGC  
 CGTCTTCCACCCAGCCAACTCCACAGGCATCCGGGAGGCTGAGCGTTTTGGAACGCCCTTGGCAGGGCC  
 TCCAGCGTCACGCGGGCAGGAAAGGAGGAGAAGCAGCAGCGGTCTCAAGTACAAGGCTGGCCGGCTGCCCC  
 TGGGGAAGATAGGAAGGGGCTTCAGCAGCAAAGATCCCGATTTCCATGATGACTATGGCTCTTTCAAAA  
 CGAAGATTGCGGAGACGATGACCCCAAGCAGGCTGGAACAGTGCCGTCTGGAAGGCTACAACAGCCTG  
 GAGGTCACCAACGTG

**ACGCGT**ACGCGGCCGCTCGAGCAGAACTCATCTCAGAAGAGGATCTGGCAGCAAATGATATCCTGGATT  
 ACAAGGATGACGACGATAAGGTTTAA

**Protein Sequence:** >RC213977 representing NM\_201628  
 Red=Cloning site Green=Tags(s)

```

MMEDNKQLALRIDGAVQSASQEVTLNRAELTATNRRLAELSGGGGPGPGGAAASASAAGDSAATNMENP
QLGAQVLLREEVSRLQEEVHLLRQMKEMLAKDLEESQGGKSSEVL SATELRVQLAQKEQELARAKEALQA
MKADRKRLKGEKTDLVSQMQQLYATLESREEQLRDFIRNYEQHRKESEDAVKALAKEKDLLEREKELRR
QAKEATDHATALRSQDLKDNRMKELEAELAMAKQSLATLTKDVPKRHSLAMPGETVLNGNQEWVQADL
PLTAAIRQSQQLTYHSHPPHADRQAVRVSPCHSRQPSVISDASAAEGDRSSTPSDINSRHRTHSLCNG
DSPGVPQKLNHNPIVQSLEDLEDQKRKKKKEKMGFGSISRVFARGKQRKSLDPGLFDDSDSQCSPTRQSL
SLSEGEEQMDRLQQVELVRTTPMSHWKAGTVQAWLEVVMAMPYVYKACTENVKSGKVLLSLSDEDLQLGL
GVCSSLHRRKRLAIEDYRDAEAGRSLSKAAELDHHWVAKAWLNDIGLSQYSQAFQNHLDVGRMLNSLMK
RDLEKHLNVSKKFHQVSILLGIELLYQVNF SREALQERRARCETQNIIDPVVWTNQRVLKWVRDIDLKEYA
DNL TNSGVHGA VLVEPTFNAEAMATALGIPSGKHILRRHLAEEMSAVFHPANSTGIREAERFGTPPGRA
SSVTRAGKEENSGLKYKAGRLPLGKIGRGFSSKDPDFHDDYGS LQNEDCGDDDPQSRLEQCRLEGYNLSL
EVTNV
  
```

TRTRPLEQKLI SEEDLAANDILDYKDDDDKV

**Chromatograms:** [https://cdn.origene.com/chromatograms/mk8029\\_b01.zip](https://cdn.origene.com/chromatograms/mk8029_b01.zip)

**Restriction Sites:** Sgfl-Mlul

Cloning Scheme:



ACCN: NM\_201628

ORF Size: 2325 bp

OTI Disclaimer: The molecular sequence of this clone aligns with the gene accession number as a point of reference only. However, individual transcript sequences of the same gene can differ through naturally occurring variations (e.g. polymorphisms), each with its own valid existence. This clone is substantially in agreement with the reference, but a complete review of all prevailing variants is recommended prior to use. [More info](#)

OTI Annotation: This clone was engineered to express the complete ORF with an expression tag. Expression varies depending on the nature of the gene.

Components: The ORF clone is ion-exchange column purified and shipped in a 2D barcoded Matrix tube containing 10ug of transfection-ready, dried plasmid DNA (reconstitute with 100 ul of water).

**Reconstitution Method:**

1. Centrifuge at 5,000xg for 5min.
2. Carefully open the tube and add 100ul of sterile water to dissolve the DNA.
3. Close the tube and incubate for 10 minutes at room temperature.
4. Briefly vortex the tube and then do a quick spin (less than 5000xg) to concentrate the liquid at the bottom.
5. Store the suspended plasmid at -20°C. The DNA is stable for at least one year from date of shipping when stored at -20°C.

**Note:** Plasmids are not sterile. For experiments where strict sterility is required, filtration with 0.22um filter is required.

**RefSeq:** [NM\\_201628.3](#)

**RefSeq Size:** 6047 bp

**RefSeq ORF:** 2328 bp

**Locus ID:** 23254

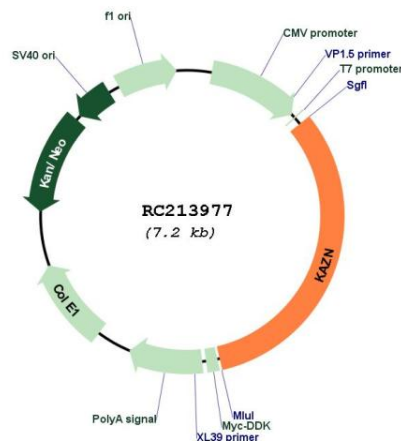
**UniProt ID:** [Q674X7](#)

**Cytogenetics:** 1p36.21

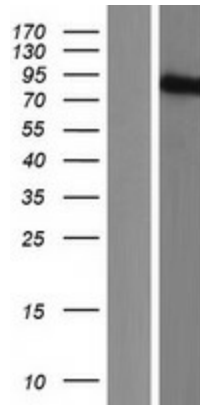
**MW:** 86.2 kDa

**Gene Summary:** This gene encodes a protein that plays a role in desmosome assembly, cell adhesion, cytoskeletal organization, and epidermal differentiation. This protein co-localizes with desmoplakin and the cytolinker protein periplakin. In general, this protein localizes to the nucleus, desmosomes, cell membrane, and cortical actin-based structures. Some isoforms of this protein also associate with microtubules. Alternative splicing results in multiple transcript variants encoding distinct isoforms. Additional splice variants have been described but their biological validity has not been verified. [provided by RefSeq, Aug 2011]

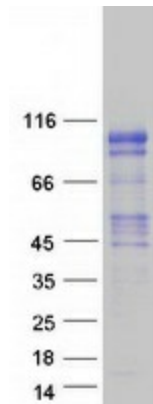
### Product images:



Circular map for RC213977



Western blot validation of overexpression lysate (Cat# [LY404489]) using anti-DDK antibody (Cat# [TA50011-100]). Left: Cell lysates from untransfected HEK293T cells; Right: Cell lysates from HEK293T cells transfected with RC213977 using transfection reagent MegaTran 2.0 (Cat# [TT210002]).



Coomassie blue staining of purified KAZN protein (Cat# [TP313977]). The protein was produced from HEK293T cells transfected with KAZN cDNA clone (Cat# RC213977) using MegaTran 2.0 (Cat# [TT210002]).